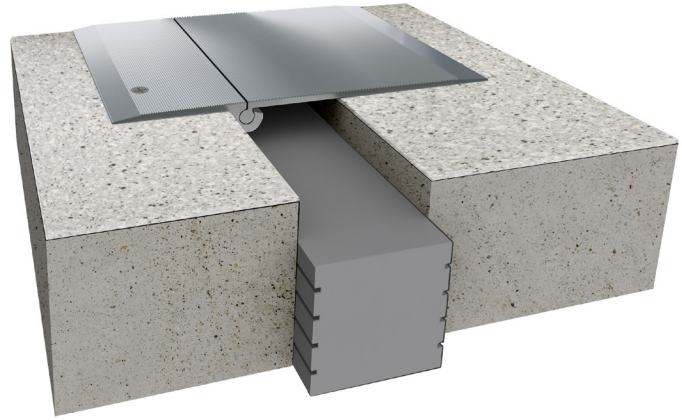


# 1150 Series Foam Seals

Floor to Floor / Floor to Wall  
Wall to Wall / Wall to Corner



Movement Rating +25% / -50%

## Product Guide



Thermal



Interior



Exterior



Fire Rated  
Option



Weather  
Resistant

- ▶ Chemical, Weather, and UV resistant
- ▶ 100% Watertight foam seal
- ▶ Excellent when in contact with grade or oils
- ▶ Allows for 25% Tension | 50% Compression | 50% Shear movement
- ▶ Ridged sides trap and pool epoxy (JPR003) providing superior adhesion to the joint surface to resist imposed loads
- ▶ Good sound attenuation qualities
- ▶ For joint widths larger than 3" (76mm) in horizontal applications, JointMaster recommends a coverplate over the 1150 Foam Seal.

Physical Data		
Property	Value	ASTM D3575
Nominal Density	2.0 pcf ± 0.3	Suffix W
Compressive (±1)	9 psi @ 25% 16 psi @ 50%	Suffix D
Elongation	200% ± 10%	Suffix T
Tensile Strength	125 psi ± 12 psi	Suffix T
Tear Strength	17.5 pli ± 3 pli	Suffix G
Compression Set 22hrs @ 50% (±3)	14% @ 24 hr rcvy (20% @ 2 hr rcvy)	Suffix B
Water Absorption	< 0.03 lb/ft <sup>2</sup> 3% vol/vol max	Suffix L

Application	System	Nominal Joint Width		Seal Height		Movement + / -			
		US	mm	US	mm	Compression		Expansion	
						US	mm	US	mm
1150 Floor/Floor Floor/Wall Wall/Wall Wall/Corner	1150-100	1"	25	2"	51	.5"	13	1.25"	32
	1150-200	2"	51	2"	51	1"	25	2.5"	64
	1150-300	3"	76	3"	76	1.5"	38	3.75"	95
	1150-400	4"	102	4"	101	2"	51	5"	127
	1150-500	5"	127	4"	101	2.5"	64	6.25"	159
	1150-600	6"	152	4"	101	3"	76	7.5"	191
	1150-700	7"	178	5"	127	3.5"	83	8.75"	222
	1150-800	8"	203	5"	127	4"	89	10	254

1150 series available in 1/2" size increments up to 12" in width, contact your InPro Rep. for more info

IPC.1065/REV.8

inpro.com • 800.222.5556 • 262.679.9010

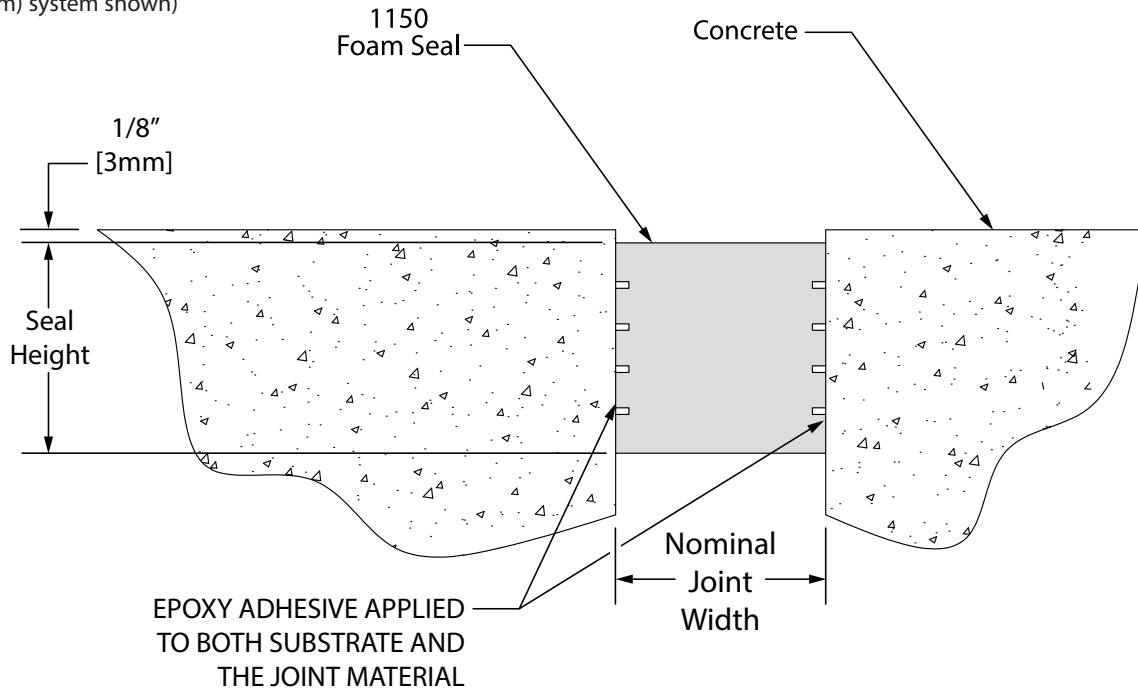
World Headquarters S80 W18766 Apollo Drive, Muskego, WI 53150 USA

**inpro**®

# 1150 Series

## Foam Seal Systems

1150 Series Floor/Floor  
(2" (50mm) system shown)



## 1150 Series Options

1150 Series Floor/Floor  
(2" (50mm) system shown)

