

Installation Instructions

Joint System: 221, 223 Series Wall to Wall (A07 Condition)

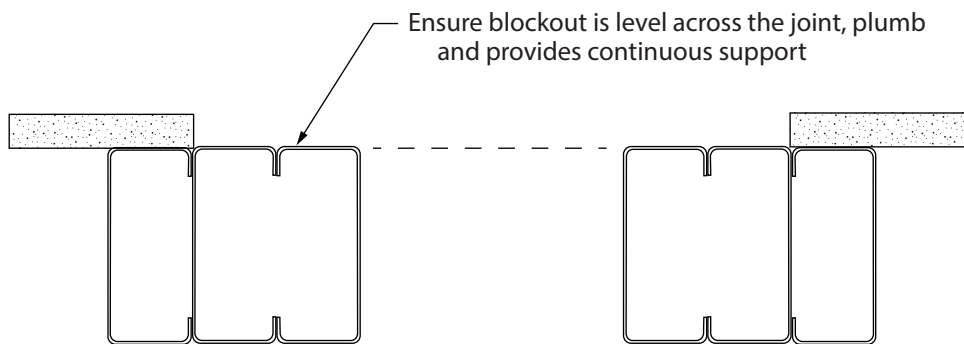
This Installation Instruction covers all 221-A07 and 223-A07 (Wall to Wall) expansion joint widths. See the follow pages for each joint width/range:

2" [50mm] - page 2-3

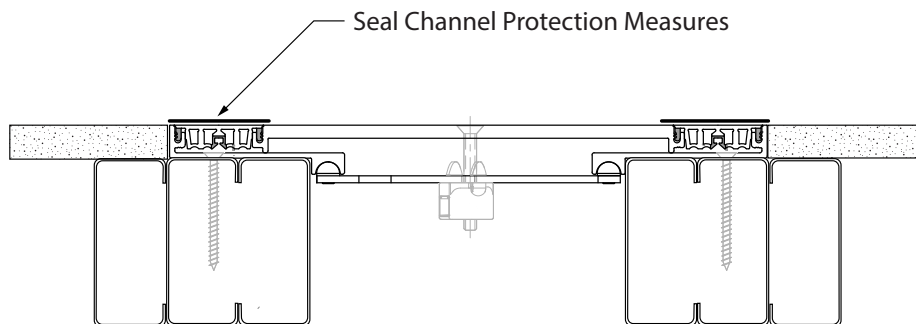
3" [75mm] thru 6" [150mm] - page 4-6

8" [200mm] and larger - page 7-9

Note: Verify that the structural gap and blockout dimensions are in conformance with submittal data before beginning installation. If this is a Fire Rated Assembly, the fire barrier must be installed before the Architectural Joint System. Refer to the fire barrier instructions for specific system installation.



Note: It is important to protect the face of the seal and the seal channels, Protect the seal/franes when finishing gypsum/plasterboard.



Note: When Installing the continuous santoprene seals, ensure you do not stretch the seal during installation into the frames. At transitions, use heatwelding for all seams and directional changes.

* Reference separate heatwelding instructions if applicable to your project.

IPC.1813.REV3

1

JOINTMASTER® Expansion Joint Systems

inpro.com • 800.222.5556 • 262.679.9010

World Headquarters S80 W18766 Apollo Drive, Muskego, WI 53150 USA

Installation Hotline: 866.394.6776

inpro®

Installation Instructions

Joint System: 221, 223 -A07 Series Wall to Wall (2" [50mm] Systems)

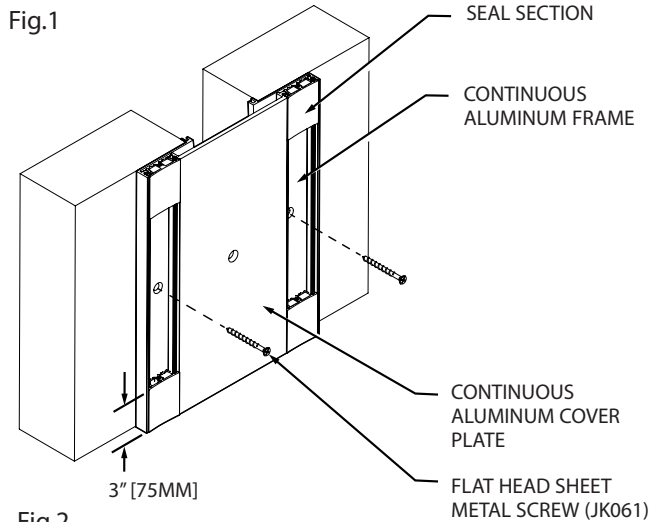


Fig.2

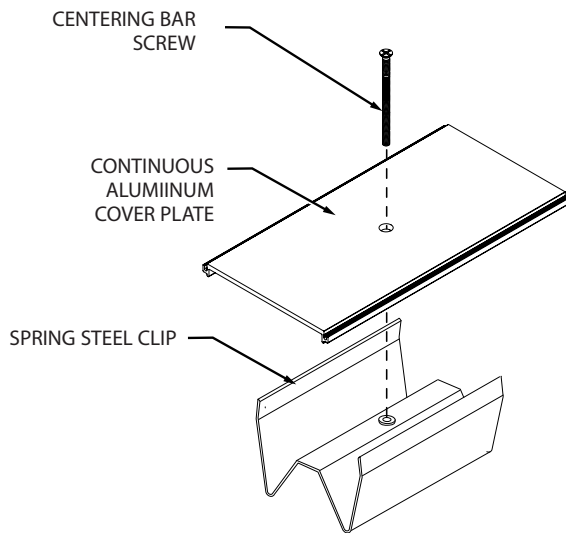
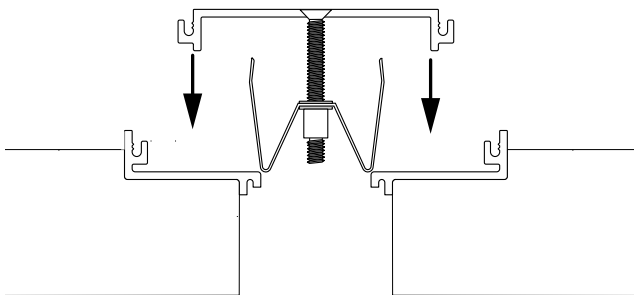


Fig.3



Expansion Joints: 2" [50mm]

1. Create recess of 5/8" [15mm] into wall system as per the architectural drawings.

Figure 1

2. Cut the aluminum components to the required length.
3. Place the outer frames in the blockout so that they are centered over the structural gap. Place the center pan/plate centrally over the outer frames. To properly space frames, cut six small 2" (50mm) sections of seal. Insert one at each end and one in the center of both sides of the outer frames.
4. Attach the continuous Aluminum Wall Frames to the wall using #8 x 2" [50mm] flat head screws (JK061) at each pre-drilled hole location.

Note: If self-drilling screw tip moves before cutting into the stud, predrill the stud using a 1/16" [3mm] drill bit.

5. Remove the spacers and cover plate from the assembly.

Figure 2

6. To attach the center pan/plate to the outer frames, place spring steel "W" clips into the channels of the outer frames. Position spring clips beneath countersunk holes in pan/plate and secure loosely using 1/4-20 x 2" flat head screws.

Figure 3

7. Install the cover plate by centering the pan/plate over the frames. Apply even pressure to the top of the centering screw, and push the cover down until it snaps into place.
8. Tighten cover pan/plate center screws by hand. Do not over tighten the clip.

Installation Instructions

Joint System: 221, 223 -A07 Series Wall to Wall (2" [50mm] Systems)

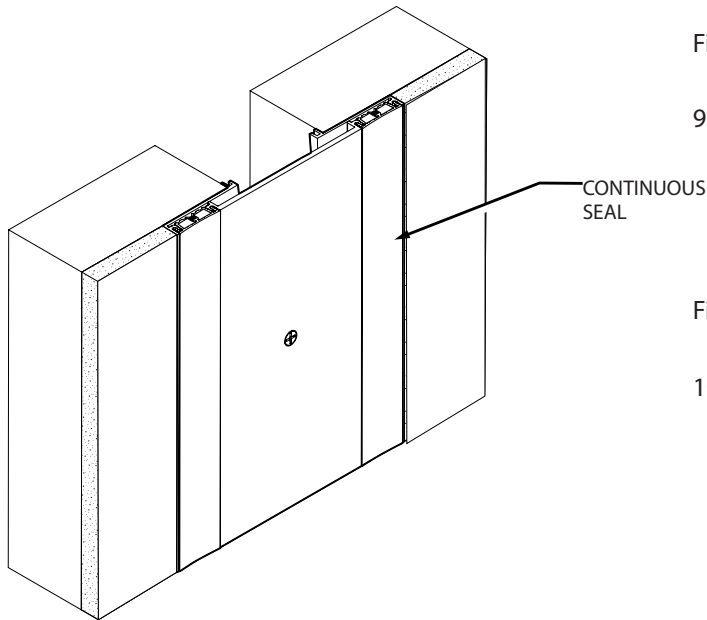


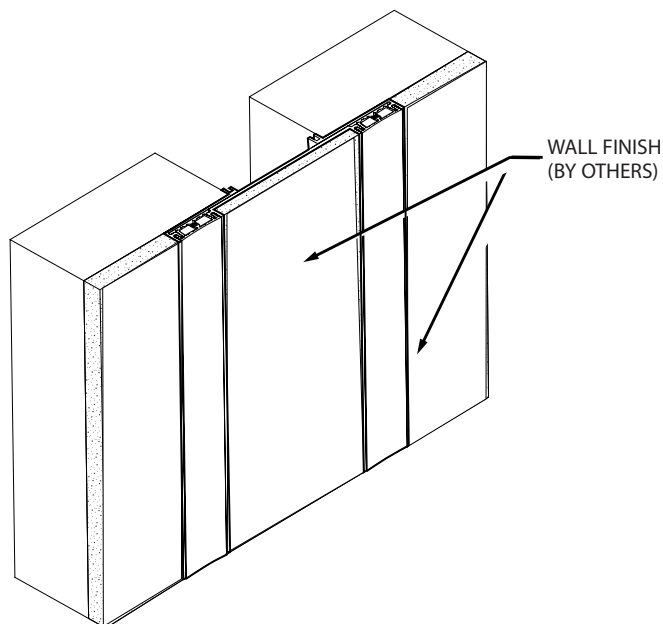
Figure 4.

9. Insert the Santoprene seals into the recessed frame slots until the seals are flush with the tops of the frames. NOTE: To assist in installing the seal, apply a mist of soapy water solution to the back of the seal. A 1" (25mm) wide seam roller may be used to fully engage the seal barbs into the frame slots.

Figure 5

10. If finishing edge of drywall after installation of system, reference the project's gypsum / plasterboard specifications for edge finishing procedure.

Note: It is important to protect the face of the seal or the seal channels, use painters tape applied to the top face of the seal/ frames when feathering dry wall. feathering compound cures in channel, the black tips of the seal will not be able to lock into the channel.



11. For 223 systems, install 3/8" [9mm] infill flush with top of the pan. Reference infill materials supplier's recommendations for appropriate prepwork and adhesive considerations.
12. Clean the exposed surfaces with a non-solvent cleaner, such as 409 or Xylene, as required.

Installation Instructions

Joint System: 221, 223 -A07 Series Wall to Wall (3" [75mm] - 6" [150mm] Systems)

Fig.1

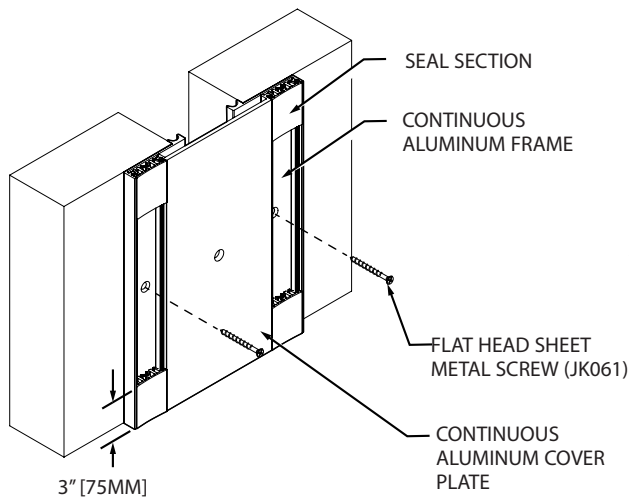


Fig.2

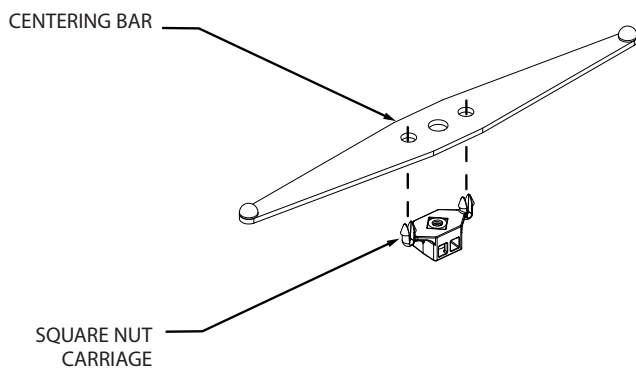
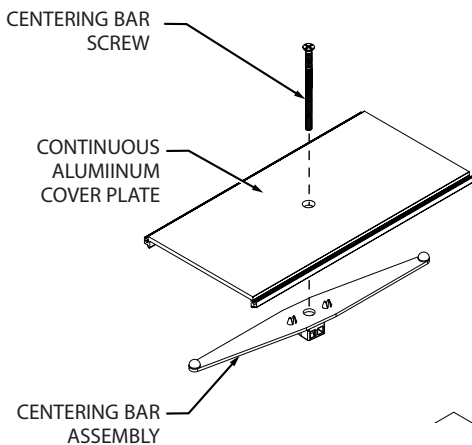


Fig.3



Expansion Joints: 3" [75mm] - 6" [175mm]

1. Create recess of 5/8" [15mm] into wall system as per the architectural drawings.

Figure 1

2. Cut the aluminum components to the required length.

3. Place the outer frames in the blockout so that they are centered over the structural gap. Place the center pan/plate centrally over the outer frames. To properly space frames, cut six small 2" (50mm) sections of seal. Insert one at each end and one in the center of both sides of the outer frames.

4. Attach the continuous Aluminum Wall Frames to the wall using #8 x 2" [50mm] flat head screws (JK061) at each pre-drilled hole location.

Note: If self-drilling screw tip moves before cutting into the stud, predrill the stud using a 1/16" [3mm] drill bit.

5. Remove the spacers and cover plate from the assembly.

Figure 2

6. Assemble centering bars and injection molded clips as shown. Ensure the round pins of the centering bar are opposite of the clip.

Note: Ensure the clip both of the lips on the clip barbs are fully engaged and locked above the centering bar surface.

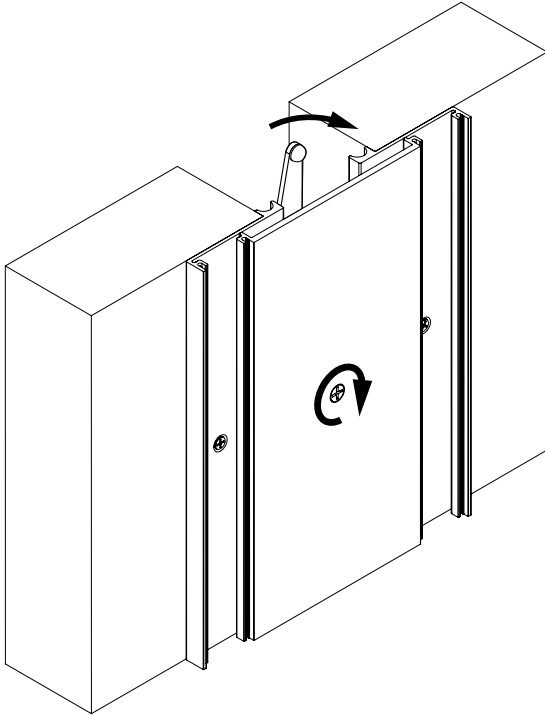
Figure 3

7. Pre-assemble the center pan/plate by inserting JK031 (1/4-20 x 2") flat head screws through the counter-sunk holes and threading them loosely onto the centering bar assembly. When bringing the center pan/plate assembly to the joint opening, ensure centering bars are parallel with the length of the plate.

Installation Instructions

Joint System: 221, 223 -A07 Series Wall to Wall (3" [75mm] - 6" [150mm] Systems)

Fig.4



Note: Do not thread the screw beyond the bottom of the nut.

Figure 4

8. Position the assembled center pan/plate onto the wall frames and center. Begin to hand tighten the screws to engage the centering bars in the frame channels.

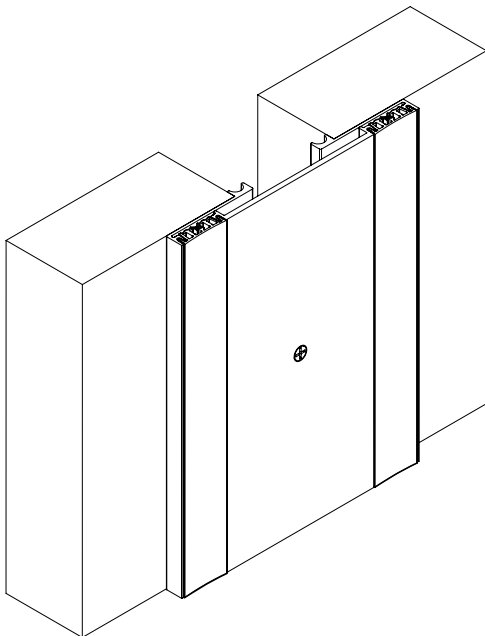
9. Do not overtighten screw, this will deform the centering bar and prevent rotation as the expansion joint moves. Cover pan/plate should be snug to frames.

Note: If Centering bars do not rotate as the screw is tightened, use Loctite applied to screw threads or use painters tape to hold centering bars to screws as the screw is tightened.

Figure 5v

10. Insert the Santoprene seals into the recessed frame slots until the seals are flush with the tops of the frames. NOTE: To assist in installing the seal, apply a mist of soapy water solution to the back of the seal. A 1" wide seam roller may be used to fully engage the barbs of the seal into the frame slots.

Fig.5



Installation Instructions

Joint System: 221, 223 -A07 Series Wall to Wall (3" [75mm] - 6" [150mm] Systems)

Fig.6

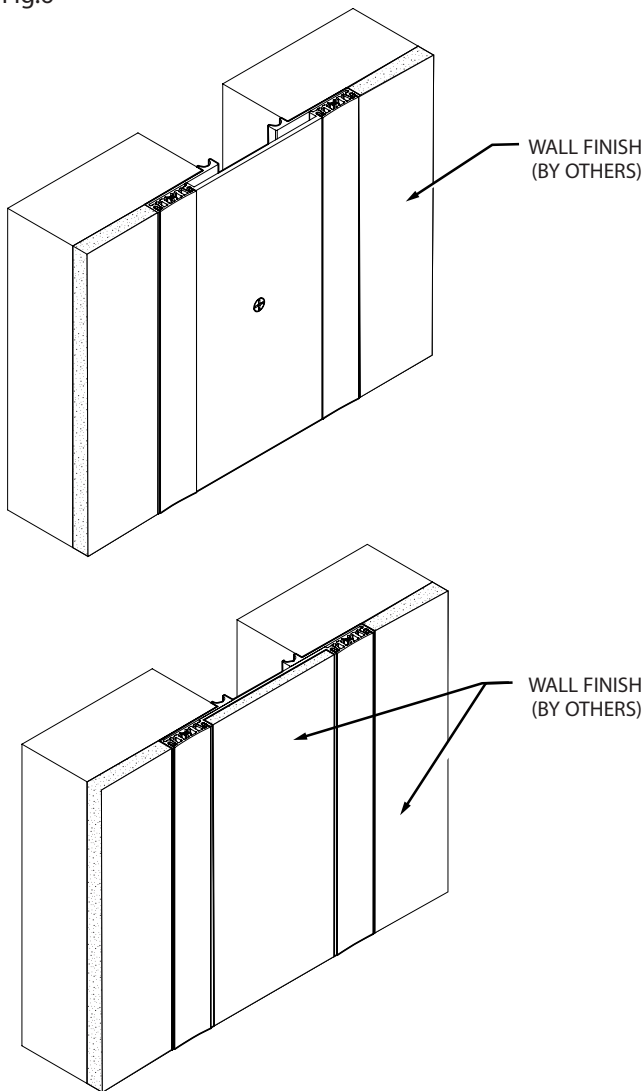


Figure 6

11. If finishing edge of drywall after installation of system, reference the project's gypsum / plasterboard specifications for edge finishing procedure.

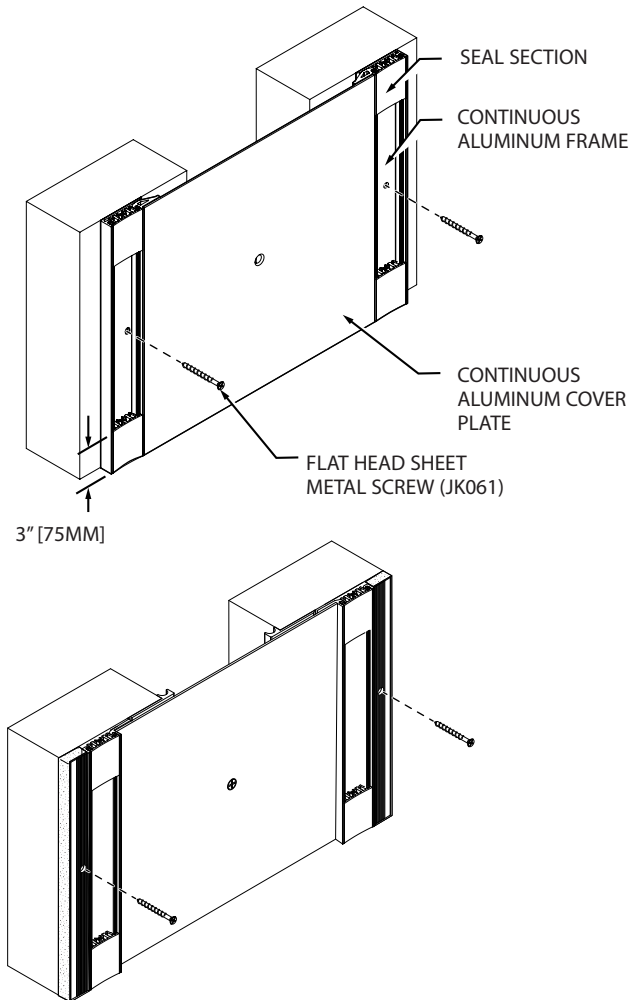
Note: It is important to protect the face of the seal or the seal channels, use painters tape applied to the top face of the seal/ frames when feathering dry wall. feathering compound cures in channel, the black tips of the seal will not be able to lock into the channel.

12. For 223 systems, install 3/8" [9mm] infill flush with top of the pan. Reference infill materials supplier's recommendations for appropriate prepwork and adhesive considerations.
13. Clean the exposed surfaces with a non-solvent cleaner, such as 409 or Xylene, as required.

Installation Instructions

Joint System: 221, 223 -A07 Series Wall to Wall (8" [200mm] and larger systems)

Fig.1



Expansion Joints: 8" [200mm] plus

1. Create recess of 5/8" [15mm] into wall system as per the architectural drawings.

Figure 1

2. Cut the aluminum components to the required length.
3. Place the outer frames in the blockout so that they are centered over the structural gap. Place the center pan/plate centrally over the outer frames. To properly space frames, cut six small 2" (50mm) sections of seal. Insert one at each end and one in the center of both sides of the outer frames.
4. Attach the outer continuous Aluminum Wall Frames to the wall using #8 x 2" [50mm] flat head screws (JK061) at each pre-drilled hole location.

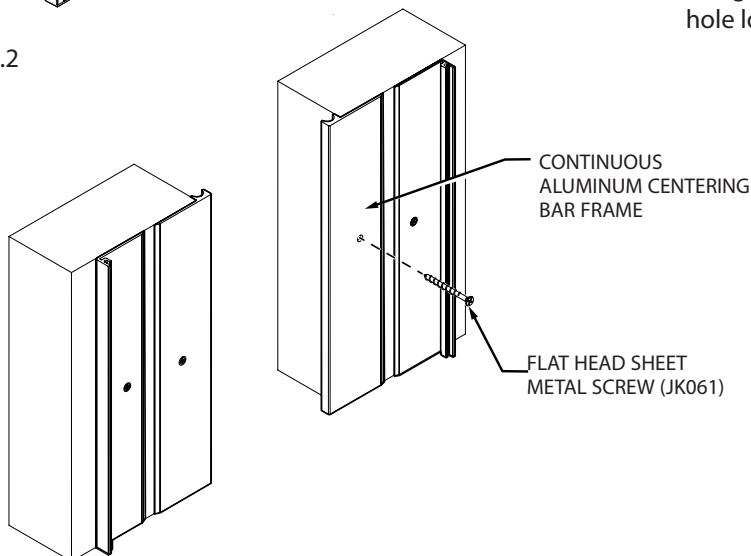
Note: If self-drilling screw tip moves before cutting into the stud, predrill the stud using a 1/16" [3mm] drill bit.

5. Remove the spacers and cover plate from the assembly.

Figure 2

6. Position the Centering Bar Frames against the edge of the joint opening as showing. Ensure short leg is flush against the joint edge. Attach the continuous Centering Bar Frames to the wall using #8 x 2" [50mm] flat head screws (JK061) at each pre-drilled hole location.

Fig.2



Installation Instructions

Joint System: 221, 223 -A07 Series Wall to Wall (8" [200mm] and larger systems)

Fig.3

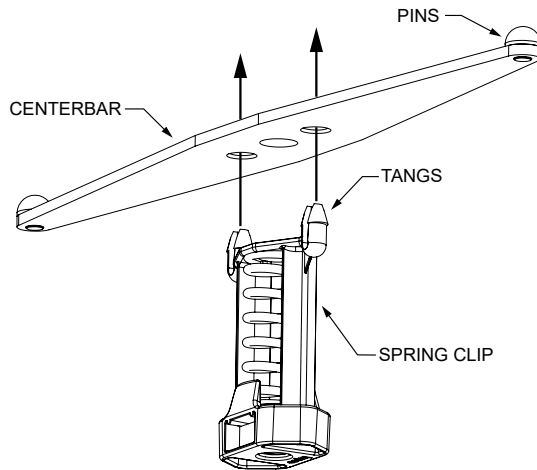


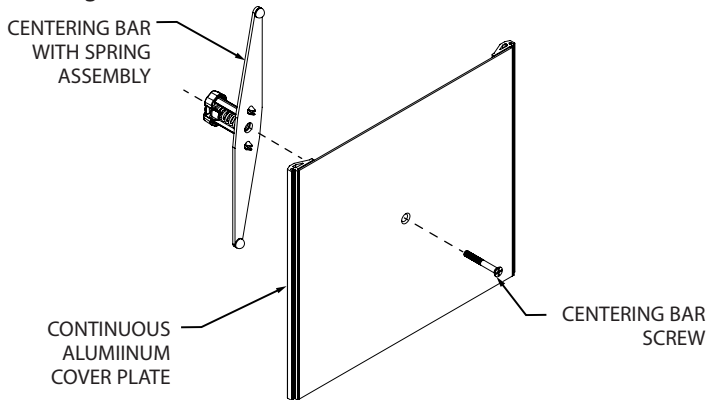
Figure 3

7. Assemble Centerbar & Spring Clip: Spring Clip should be installed opposite the Centerbar pins, with the tangs (located on top of the SpringClip) going into the holes with the angled edge.

Fig.3a

8. Re-assemble the center pan/plate by inserting JK178 (1/4-20 x 3") flat head screws through the counter-sunk holes and threading them loosely onto the centering bar assembly. When bringing the center pan/plate assembly to the joint opening, ensure centering bars are parallel with the length of the plate.

Fig.3a



Note: Do not thread the screw beyond the bottom of the nut.

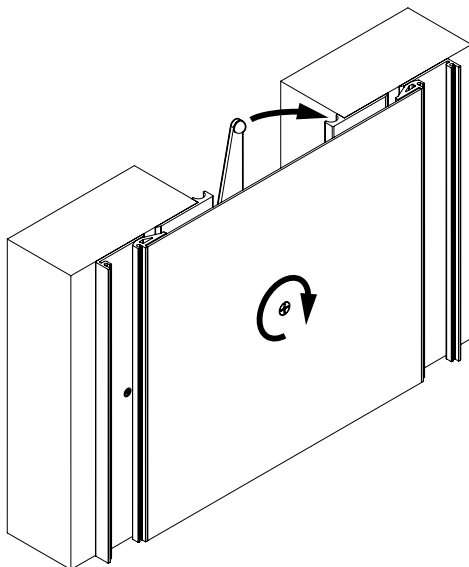
Figure 4

9. Position the assembled center pan/plate onto the floor frames and center. Begin to hand tighten the screws to engage the centering bars in the frame channels.

10. Do not overtighten screw, this will deform the centering bar and prevent rotation as the expansion joint moves. Cover pan/plate should be snug to frames.

Note: If Centering bars do not rotate as the screw is tightened, use Loctite applied to screw threads. Or use painters tape to hold centering bars to screws as the screw is tightened.

Fig.4



Installation Instructions

Joint System: 221, 223 -A07 Series Wall to Wall (8" [200mm] and larger systems)

Fig 5

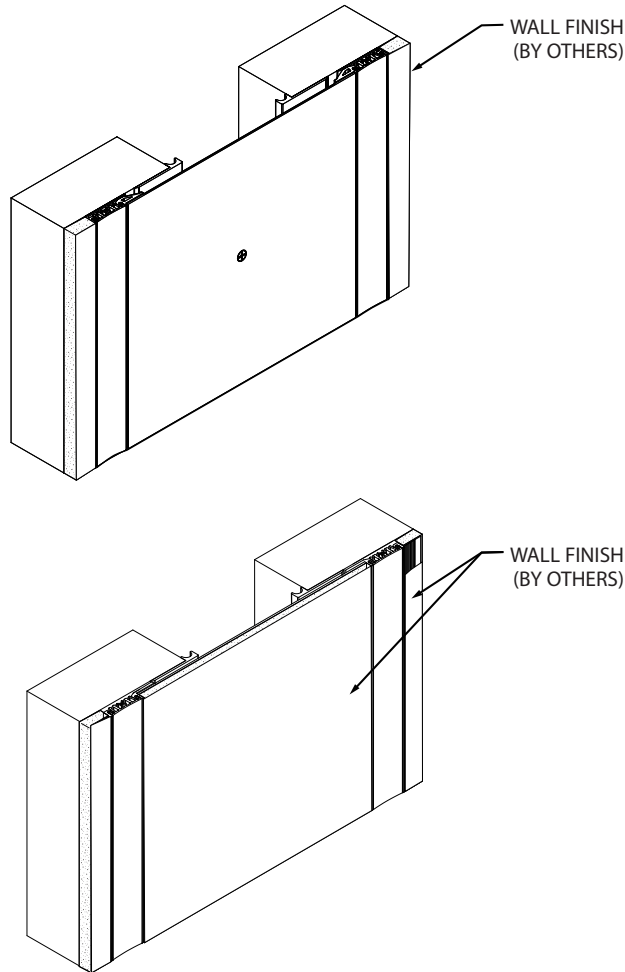


Figure 5

11. Insert the Santoprene seals into the recessed frame slots until the seals are flush with the tops of the frames. NOTE: To assist in installing the seal, apply a mist of soapy water solution to the back of the seal. A 1" wide seam roller may be used to fully engage the seal barbs into the frame slots.

12. If finishing edge of drywall after installation of system, reference the project's gypsum / plasterboard specifications for edge finishing procedure.

Note: It is important to protect the face of the seal or the seal channels, use painters tape applied to the top face of the seal/ frames when feathering dry wall. feathering compound cures in channel, the black tips of the seal will not be able to lock into the channel.

13. For 223 systems, install 3/8" [9mm] infill flush with top of the pan. Reference infill materials suppliers recommendations for appropriate prepwork and adhesive considerations.

14. Clean the exposed surfaces with a non-solvent cleaner, such as 409 or Xylene, as required.