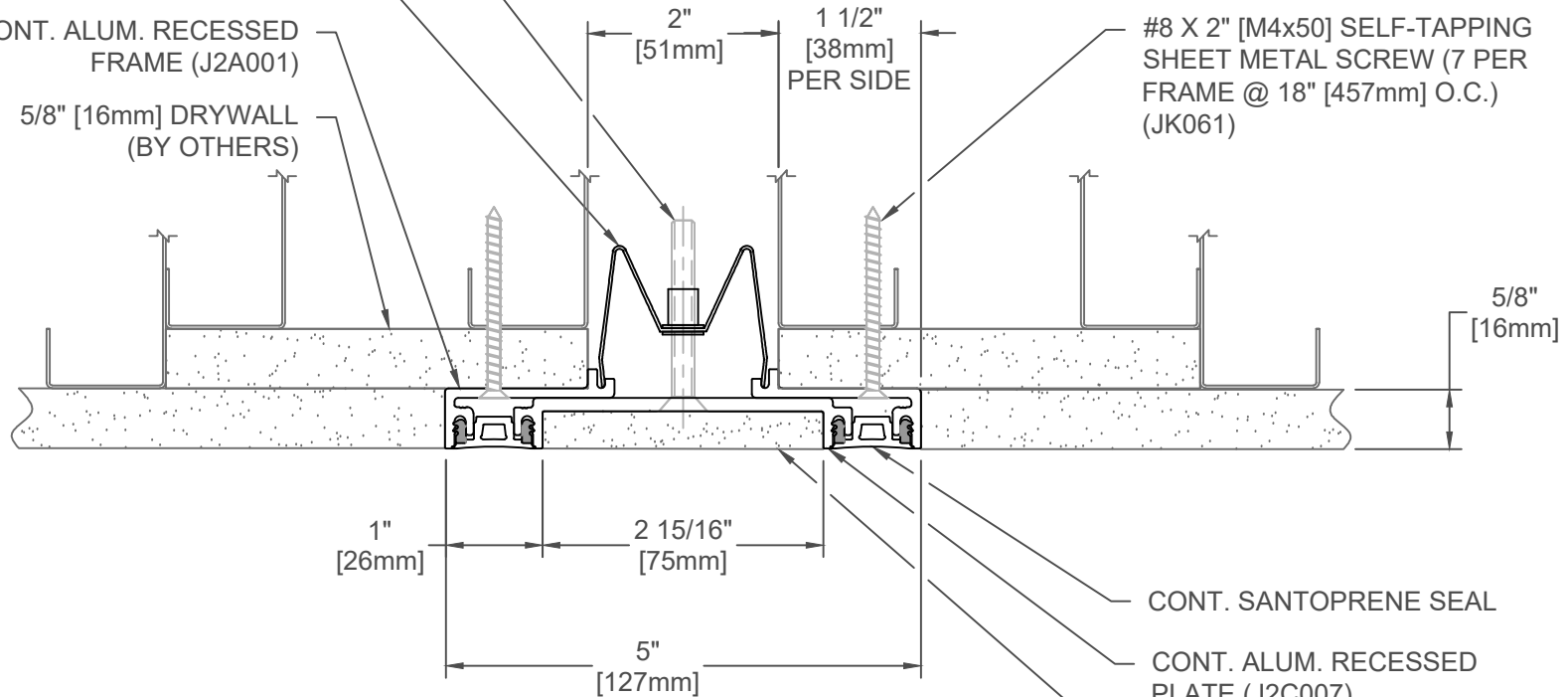


1/4"-20 X 2" PHILLIPS FLAT HEAD  
MACHINE SCREW (7 PER PLATE @ 18"  
[457mm] O.C.) (JK031)

SS SPRING CLIP (J4J002) (7 PER  
PLATE @ 18" [457mm] O.C.)

CONT. ALUM. RECESSED  
FRAME (J2A001)

5/8" [16mm] DRYWALL  
(BY OTHERS)



#8 X 2" [M4x50] SELF-TAPPING  
SHEET METAL SCREW (7 PER  
FRAME @ 18" [457mm] O.C.)  
(JK061)

5/8"  
[16mm]

1"  
[26mm]

2 15/16"  
[75mm]

5"  
[127mm]

CONT. SANTOPRENE SEAL

CONT. ALUM. RECESSED  
PLATE (J2C007)

3/8" [10mm] DRYWALL (BY  
OTHERS)

## 223-A07-050

SPECIFY SEAL COLOR:	
Black (J1D101)	
Beige (J1D102)	
Gray (J1D103)	
Off White (J1D104)	
Bright White (J1D105)	
Greige (J1D106)	

JOINT WIDTH		MOVEMENT ±			
		HORIZONTAL		VERTICAL	
US	mm	US	mm	US	mm
2"	51	1"	25	1"	25

FINISH: ALUM. FINISH-MILL

PROJECT:

CUSTOMER:

LOCATION:

APPLICATION  
WALL/WALL-CEILING/CEILING CONDITION W/DUAL SEALS

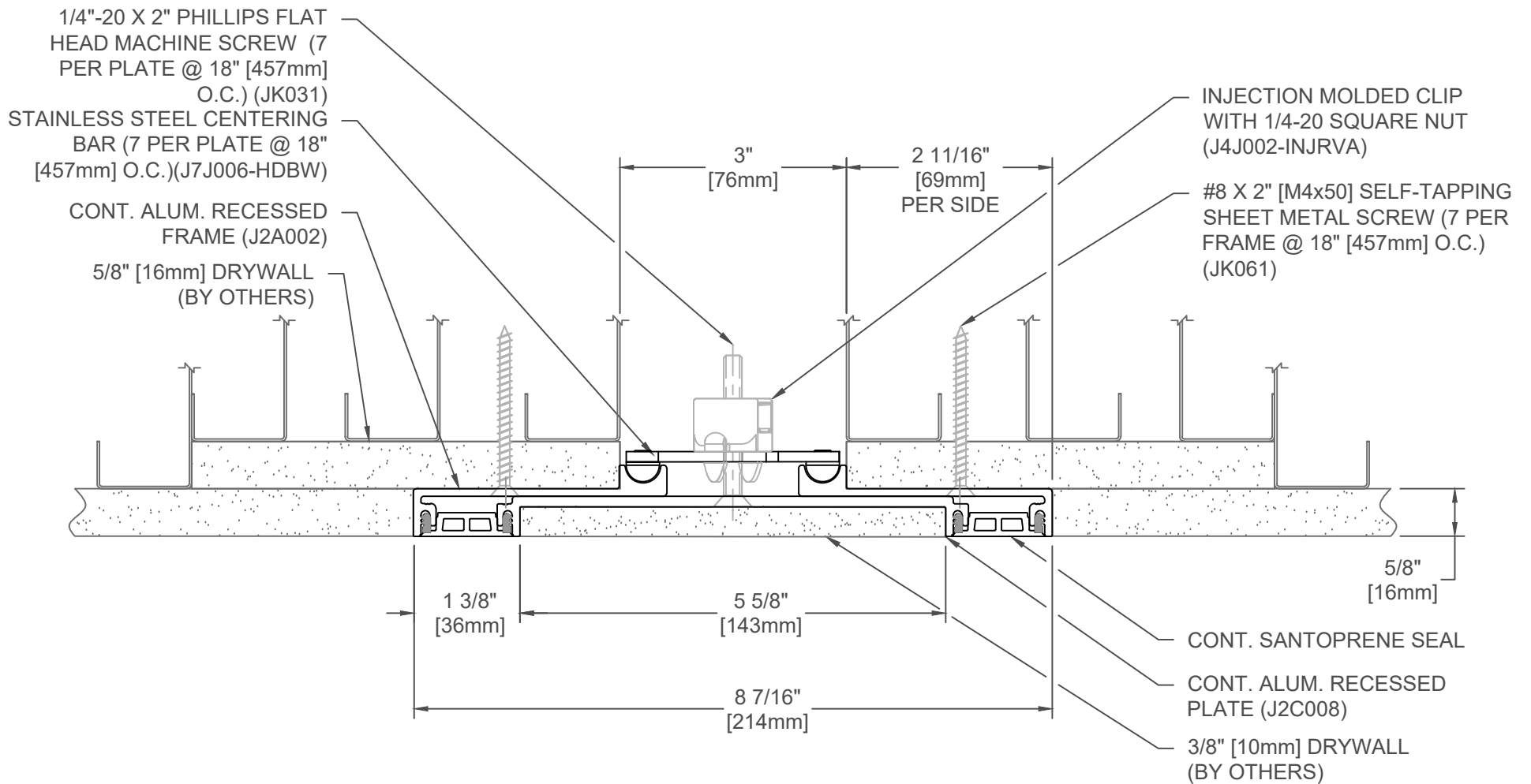
DATE: 6-12-18

SCALE: 1:4

DOC: CADJM.102/R6

**inpro.**

For More Information Visit: [Inprocorp.com](http://Inprocorp.com)



## 223-A07-075

SPECIFY SEAL COLOR:	
Black (J1D151)	
Beige (J1D152)	
Gray (J1D153)	
Off White (J1D154)	
Bright White (J1D155)	
Greige (J1D156)	

JOINT WIDTH		MOVEMENT ±			
		HORIZONTAL		VERTICAL	
US	mm	US	mm	US	mm
3"	76	1 1/2"	38	1 1/2"	38

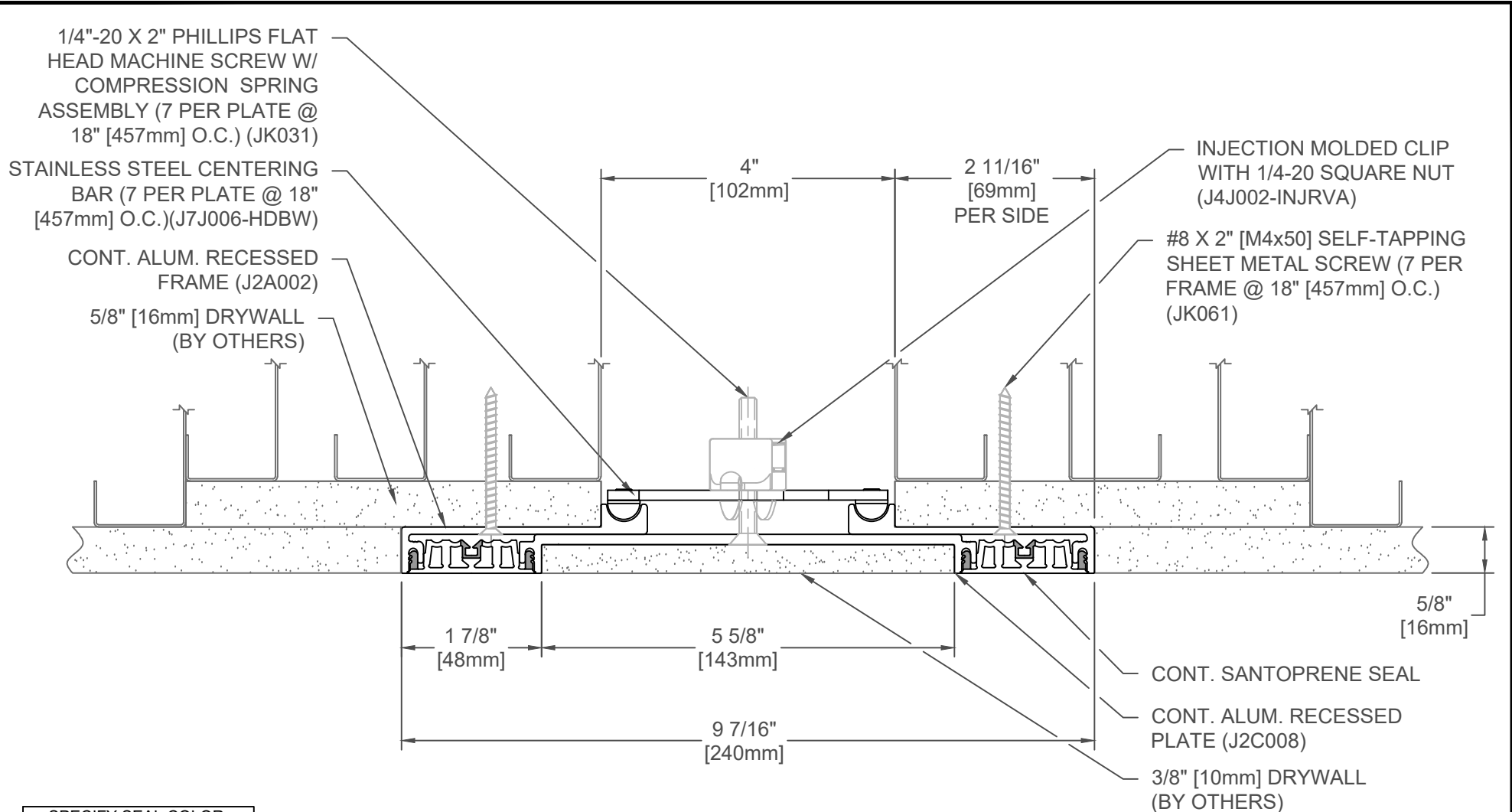
FINISH: ALUM. FINISH-MILL
PROJECT:
CUSTOMER:
LOCATION:

APPLICATION  
WALL/WALL-CEILING/CEILING CONDITION W/DUAL SEALS

DATE:	6-12-18
SCALE:	1:4
DOC:	CADJM.102/R6

**inpro.**

For More Information Visit: [Inprocorp.com](http://Inprocorp.com)



## 223-A07-100

SPECIFY SEAL COLOR:	
Black (J1D201)	
Beige (J1D202)	
Gray (J1D203)	
Off White (J1D204)	
Bright White (J1D205)	
Greige (J1D206)	

JOINT WIDTH		MOVEMENT ±			
		HORIZONTAL		VERTICAL	
US	mm	US	mm	US	mm
4"	102	2"	51	1"	25

FINISH: ALUM. FINISH-MILL
PROJECT:
CUSTOMER:
LOCATION:

APPLICATION  
WALL/WALL-CEILING/CEILING CONDITION W/DUAL SEALS

DATE:	6-12-18
SCALE:	1:4
DOC:	CADJM.102/R6

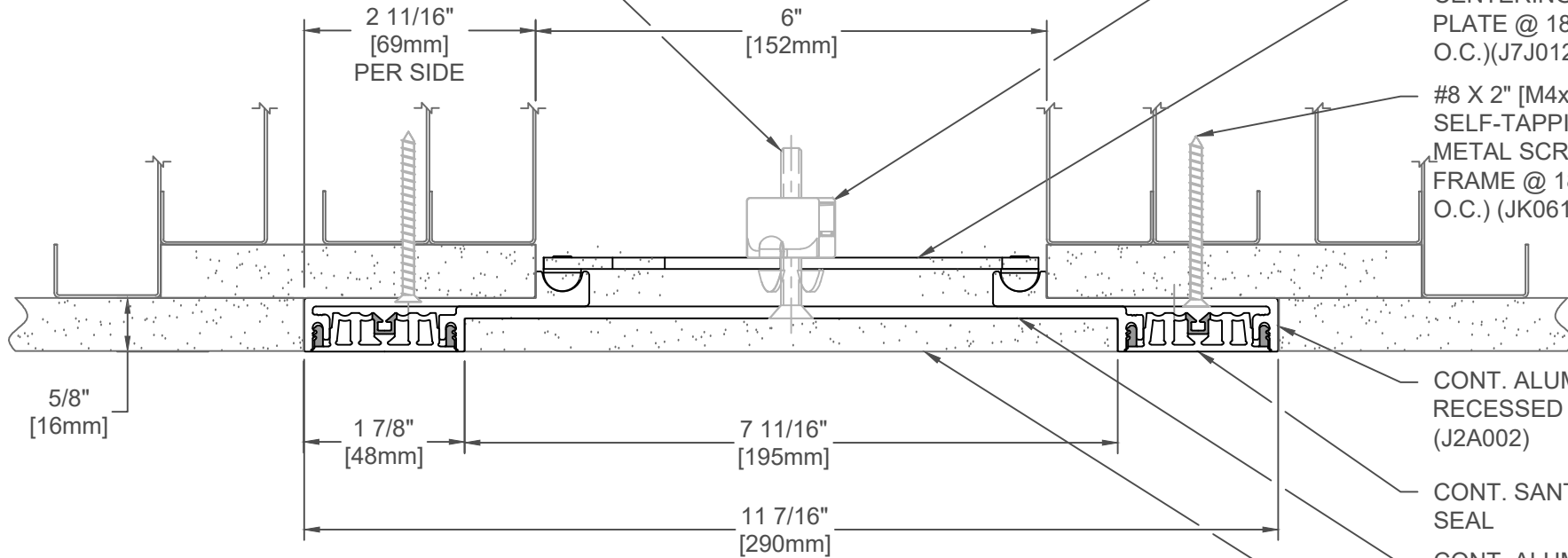


1/4"-20 X 2" PHILLIPS FLAT HEAD  
MACHINE SCREW W/ COMPRESSION  
SPRING ASSEMBLY (7 PER PLATE @ 18"  
[457mm] O.C.) (JK031)

INJECTION MOLDED  
CLIP WITH 1/4-20  
SQUARE NUT  
(J4J002-INJRVA)

STAINLESS STEEL  
CENTERING BAR (7 PER  
PLATE @ 18" [457mm]  
O.C.)(J7J012-HDBW)

#8 X 2" [M4x50]  
SELF-TAPPING SHEET  
METAL SCREW (7 PER  
FRAME @ 18" [457mm]  
O.C.) (JK061)



CONT. ALUM.  
RECESSED FRAME  
(J2A002)

CONT. SANTOPRENE  
SEAL

CONT. ALUM.  
RECESSED PLATE  
(J2C009)

3/8" [9mm] DRYWALL  
(BY OTHERS)

## 223-A07-150

SPECIFY SEAL COLOR:	
Black (J1D201)	
Beige (J1D202)	
Gray (J1D203)	
Off White (J1D204)	
Bright White (J1D205)	
Greige (J1D206)	

JOINT WIDTH		MOVEMENT ±			
		HORIZONTAL		VERTICAL	
US	mm	US	mm	US	mm
6"	152	3"	76	1 1/2"	38

FINISH: ALUM. FINISH-MILL
PROJECT:
CUSTOMER:
LOCATION:

APPLICATION  
WALL/WALL-CEILING/CEILING CONDITION W/DUAL SEALS

DATE: 6-12-18

SCALE: 1:4

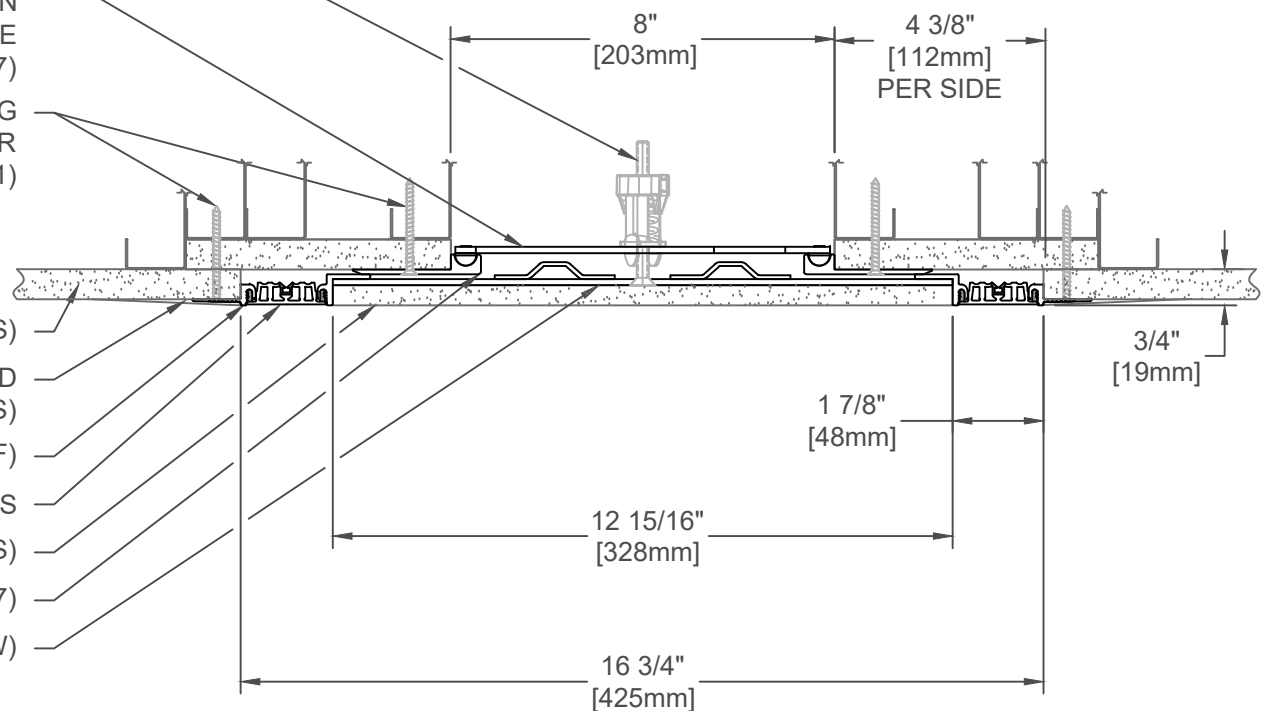
DOC: CADJM.102/R6



For More Information Visit: [Inprocorp.com](http://Inprocorp.com)

- 1/4"-20 X 3" PHILLIPS FLAT HEAD MACHINE SCREW (7 PER PLATE @ 18" [457mm] O.C.) (JK178)
- STEEL CENTERING BAR (WITH PRE-ATTACHED COMPRESSION SPRING ASSEMBLY) (7 PER PLATE @ 18" (457mm) O.C.) (J4J012-W-7)
- #8 X 2" [M4x50] SELF-TAPPING SHEET METAL SCREW (7 PER FRAME @ 18" [457mm] O.C.) (JK061)

- 5/8" [16mm] DRYWALL (BY OTHERS)
- FEATHER JOINT DRYWALL COMPOUND (BY OTHERS)
- CONT. ALUM. WALL FRAME (J1A030-F)
- CONT. SANTOPRENE SEALS
- 3/8" [10mm] DRYWALL (BY OTHERS)
- CONT. ALUM. RECESSED FRAME (J2A007)
- CONT. ALUM. PLATE (J2C070-FW)



## 223-A07-200

SPECIFY SEAL COLOR:	
Black (J1D201)	
Beige (J1D202)	
Gray (J1D203)	
Off White (J1D204)	
Bright White (J1D205)	
Greige (J1D206)	

JOINT WIDTH		MOVEMENT ±			
		HORIZONTAL		VERTICAL	
US	mm	US	mm	US	mm
8"	203	4"	102	2"	51

FINISH: ALUM. FINISH-MILL
PROJECT:
CUSTOMER:
LOCATION:

APPLICATION  
WALL/WALL-CEILING/CEILING CONDITION W/DUAL SEALS

DATE:	03-15-17
SCALE:	1:4
DOC:	CADJM.102/R6

1/4"-20 X 3" PHILLIPS FLAT  
HEAD MACHINE SCREW (7  
PER PLATE @ 18" [457mm]  
O.C.) (JK178)

STEEL CENTERING BAR  
(WITH PRE-ATTACHED  
COMPRESSION SPRING  
ASSEMBLY) (7 PER  
PLATE @ 18" (457mm)  
O.C.) (J4J024-W-7)

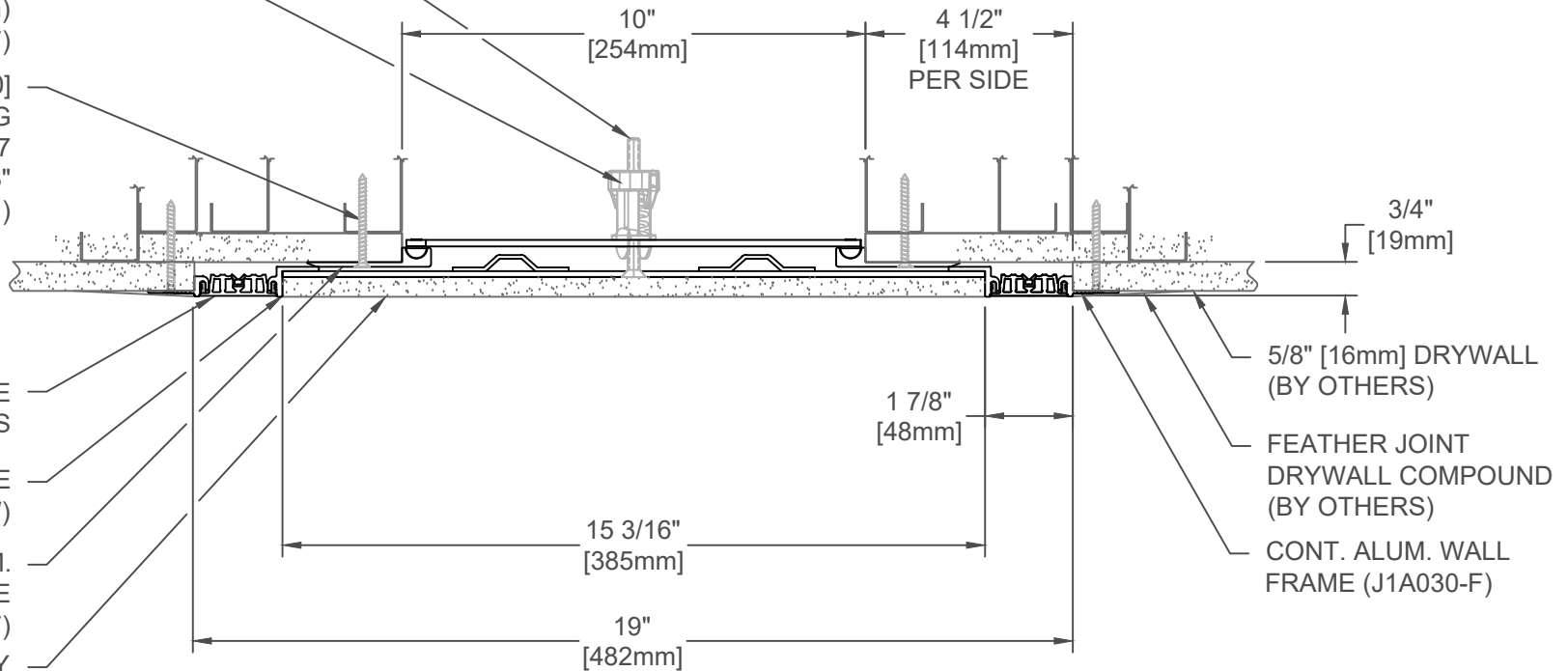
#8 X 2" [M4x50]  
SELF-TAPPING  
SHEET METAL SCREW (7  
PER FRAME @ 18"  
[457mm] O.C.) (JK061)

CONT. SANTOPRENE  
SEALS

CONT. ALUM. PLATE  
(J2C071-FW)

CONT. ALUM.  
RECESSED FRAME  
(J2A007)

3/8" [10mm] DRYWALL (BY  
OTHERS)



**SPECIFY SEAL COLOR:**

Black (J1D201)	
Beige (J1D202)	
Gray (J1D203)	
Off White (J1D204)	
Bright White (J1D205)	
Greige (J1D206)	

## 223-A07-250

JOINT WIDTH		MOVEMENT ±			
		HORIZONTAL		VERTICAL	
US	mm	US	mm	US	mm
10"	254	5"	127	2 1/2"	64

FINISH: ALUM. FINISH-MILL

PROJECT:

CUSTOMER:

LOCATION:

APPLICATION  
WALL/WALL-CEILING/CEILING CONDITION W/DUAL SEALS

DATE: 03-15-17

SCALE: 1:4

DOC: CADJM.102/R6

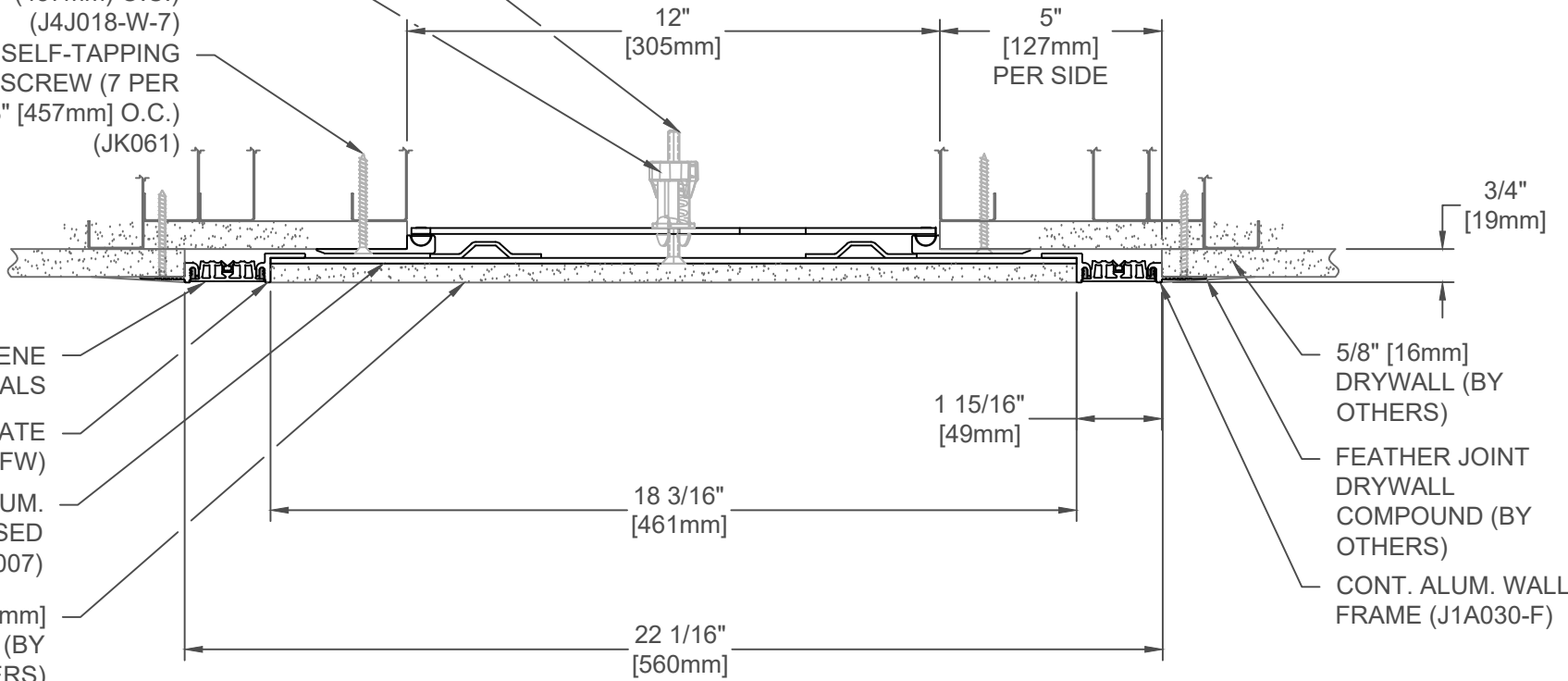
**inpro.**

For More Information Visit: [Inprocorp.com](http://Inprocorp.com)

1/4"-20 X 3" PHILLIPS FLAT HEAD  
MACHINE SCREW (7 PER PLATE  
@ 18" [457mm] O.C.) (JK178)

STEEL CENTERING BAR (WITH  
PRE-ATTACHED COMPRESSION  
SPRING ASSEMBLY) (7 PER  
PLATE @ 18" (457mm) O.C.)  
(J4J018-W-7)

#8 X 2" [M4x50] SELF-TAPPING  
SHEET METAL SCREW (7 PER  
FRAME @ 18" [457mm] O.C.)  
(JK061)



CONT. SANTOPRENE  
SEALS

CONT. ALUM. PLATE  
(J2C072-FW)

CONT. ALUM.  
RECESSED  
FRAME (J2A007)

3/8" [10mm]  
DRYWALL (BY  
OTHERS)

1 15/16"  
[49mm]

18 3/16"  
[461mm]

22 1/16"  
[560mm]

3/4"  
[19mm]

5/8" [16mm]  
DRYWALL (BY  
OTHERS)

FEATHER JOINT  
DRYWALL  
COMPOUND (BY  
OTHERS)

CONT. ALUM. WALL  
FRAME (J1A030-F)

**SPECIFY SEAL COLOR:**

Black (J1D201)	
Beige (J1D202)	
Gray (J1D203)	
Off White (J1D204)	
Bright White (J1D205)	
Greige (J1D206)	

## 223-A07-300

JOINT WIDTH		MOVEMENT ±			
		HORIZONTAL		VERTICAL	
US	mm	US	mm	US	mm
12"	305	6"	152	3"	76

FINISH: ALUM. FINISH-MILL

PROJECT:

CUSTOMER:

LOCATION:

APPLICATION  
WALL/WALL-CEILING/CEILING CONDITION W/DUAL SEALS

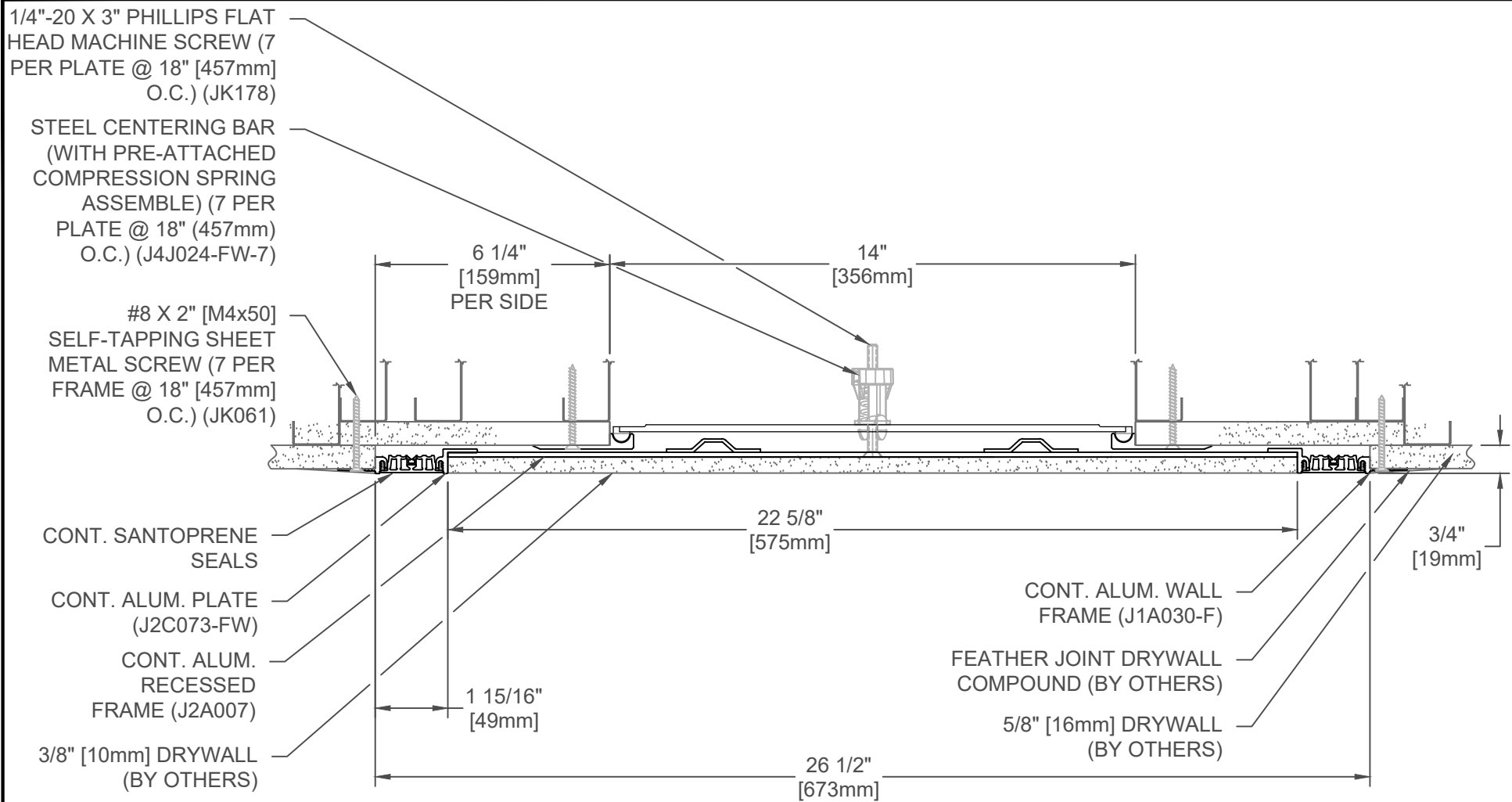
DATE: 03-15-17

SCALE: 1:4

DOC: CADJM.102/R6

**inpro.**

For More Information Visit: [Inprocorp.com](http://Inprocorp.com)



1/4"-20 X 3" PHILLIPS FLAT HEAD MACHINE SCREW (7 PER PLATE @ 18" [457mm] O.C.) (JK178)

STEEL CENTERING BAR (WITH PRE-ATTACHED COMPRESSION SPRING ASSEMBLY) (7 PER PLATE @ 18" (457mm) O.C.) (J4J024-FW-7)

#8 X 2" [M4x50] SELF-TAPPING SHEET METAL SCREW (7 PER FRAME @ 18" [457mm] O.C.) (JK061)

CONT. SANTOPRENE SEALS

CONT. ALUM. PLATE (J2C073-FW)

CONT. ALUM. RECESSED FRAME (J2A007)

3/8" [10mm] DRYWALL (BY OTHERS)

CONT. ALUM. WALL FRAME (J1A030-F)

FEATHER JOINT DRYWALL COMPOUND (BY OTHERS)

5/8" [16mm] DRYWALL (BY OTHERS)

SPECIFY SEAL COLOR:	
Black (J1D201)	
Beige (J1D202)	
Gray (J1D203)	
Off White (J1D204)	
Bright White (J1D205)	
Greige (J1D206)	

## 223-A07-350

JOINT WIDTH		MOVEMENT ±			
		HORIZONTAL		VERTICAL	
US	mm	US	mm	US	mm
14"	356	7"	178	7"	178

NOTE:  
TO DETERMINE BLOCKOUT DEPTH, DEDUCT THICKNESS OF FLOOR FINISH FROM FRAME HEIGHT.

FINISH: ALUM. FINISH-CLEAR ANODIZED

PROJECT:

CUSTOMER:

LOCATION:

APPLICATION  
RECESSED WALL/WALL-CEILING/CEILING CONDITION  
W/DUAL SEALS-FLUSH PLATE

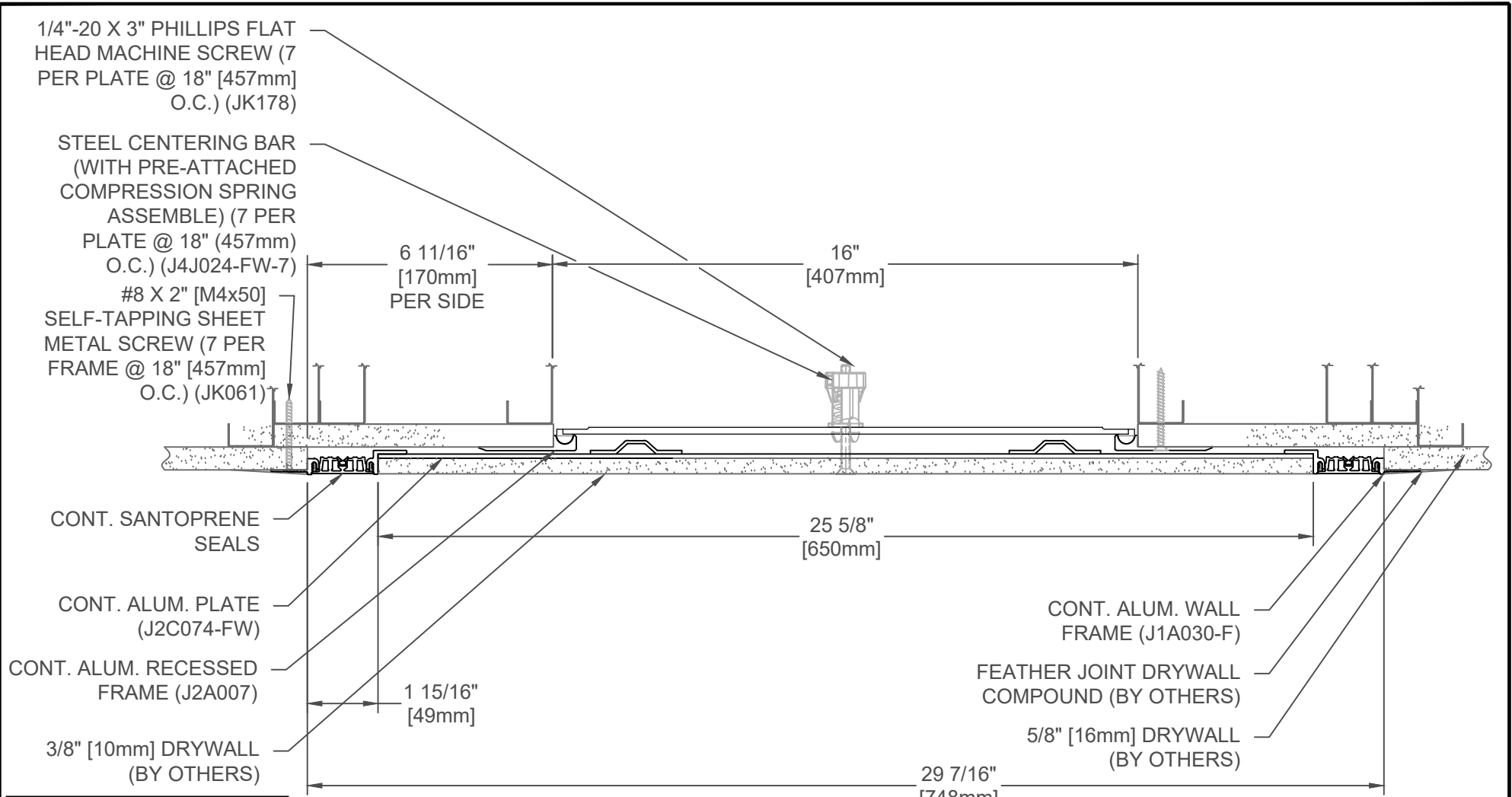
DATE: 03-08-17

SCALE: 1:4

DOC: CADJM.102/R6







SPECIFY SEAL COLOR:	
Black (J1D201)	
Beige (J1D202)	
Gray (J1D203)	
Off White (J1D204)	
Bright White (J1D205)	
Greige (J1D206)	

FINISH: ALUM. FINISH-CLEAR ANODIZED
PROJECT:
CUSTOMER:
LOCATION:

## 223-A07-400

JOINT WIDTH		MOVEMENT ±			
		HORIZONTAL		VERTICAL	
US	mm	US	mm	US	mm
18"	457	9"	229	4 1/2"	115

NOTE:  
TO DETERMINE BLOCKOUT DEPTH,  
DEDUCT THICKNESS OF FLOOR  
FINISH FROM FRAME HEIGHT.

<p>APPLICATION</p> <p>RECESSED WALL/WALL-CEILING/CEILING CONDITION</p> <p>W/DUAL SEALS-FLUSH PLATE</p>
--

DATE:	03-08-17
SCALE:	1:4
DOC:	CADJM.102/R6



For More Information Visit: [Inprocorp.com](http://Inprocorp.com)

1/4"-20 X 3" PHILLIPS FLAT  
HEAD MACHINE SCREW (7 PER  
PLATE @ 18" [457mm] O.C.)  
(JK178)

STEEL CENTERING BAR (WITH  
PRE-ATTACHED COMPRESSION  
SPRING ASSEMBLY) (7 PER  
PLATE @ 18" (457mm) O.C.)  
(J4J030-FW-7)

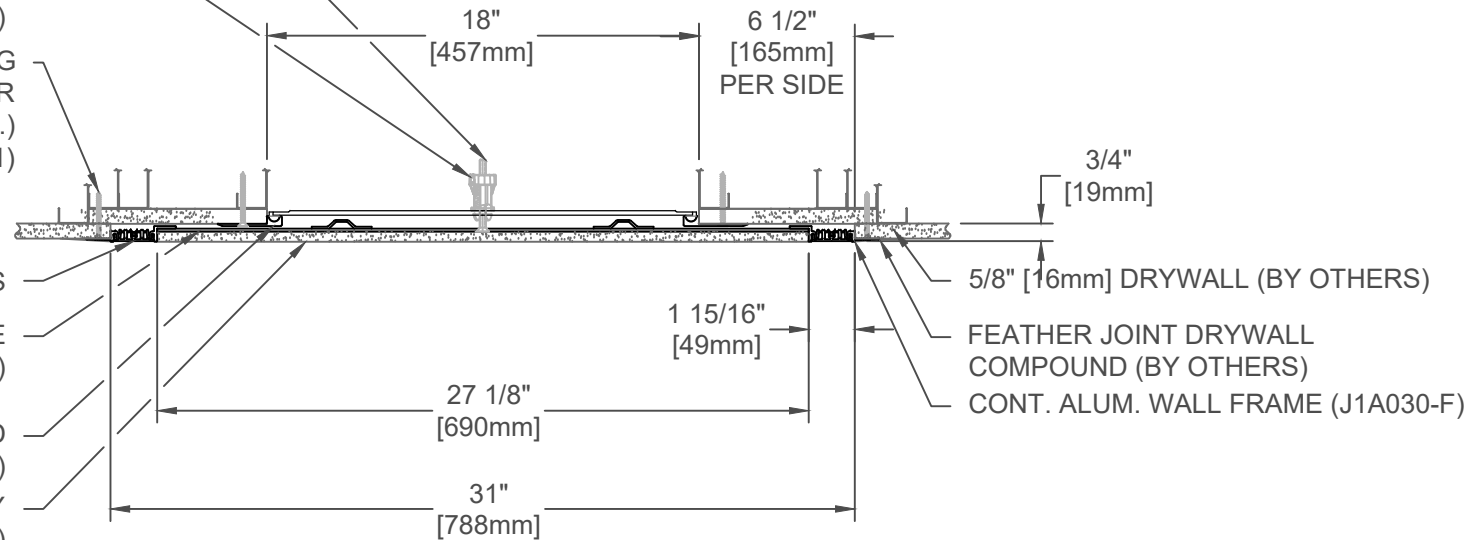
#8 X 2" [M4x50] SELF-TAPPING  
SHEET METAL SCREW (7 PER  
FRAME @ 18" [457mm] O.C.)  
(JK061)

CONT. SANTOPRENE SEALS

CONT. ALUM. PLATE  
(J2C075-FW)

CONT. ALUM. RECESSED  
FRAME (J2A007)

3/8" [10mm] DRYWALL (BY  
OTHERS)



SPECIFY SEAL COLOR:	
Black (J1D201)	
Beige (J1D202)	
Gray (J1D203)	
Off White (J1D204)	
Bright White (J1D205)	
Greige (J1D206)	

223-A07-450

JOINT WIDTH		MOVEMENT ±			
		HORIZONTAL		VERTICAL	
US	mm	US	mm	US	mm
18"	457	9"	229	4 1/2"	114

FINISH: ALUM. FINISH-MILL
PROJECT:
CUSTOMER:
LOCATION:

APPLICATION  
WALL/WALL-CEILING/CEILING CONDITION W/DUAL SEALS

DATE:	03-15-17
SCALE:	1:8
DOC:	CADJM.102/R6

**inpro.**

For More Information Visit: [Inprocorp.com](http://Inprocorp.com)