

SPHERICAL WASHER (7 PER PLATE @ 18" [457mm] O.C.) (JK150)

#12 x 2 1/2" [M5x65] HEX HEAD SHEET METAL SCREW (7 PER FRAME) (JK221)

#8 x 3/4" [M4 x 19mm] SS SOCKET HEAD SCREW, SS WASHER AND #8 [M4] SS LOCK NUT (JK240SS)

STAINLESS STEEL ARREST CABLE (4 PER PLATE) (J3Y018 / J3YCRIMP)

1/2" [13mm] DEEP PAN W/ POP-UP BRACKETS (J3C206-02-WL1)

CONT. ALUM. JAMB FRAME (J3G350-F)

RUBBER GROMMET (J3Y005)

MAGNETIC SECURING SYSTEM 4 PER SIDE SPACED EVENLY (J3M005)

#8 x 2 [M4x50] SHEET METAL SCREW (7 PER FRAME @ 18" [457mm] O.C.) (JK061)

CONT. ALUM. RECESSED WING (J3A351-F1)

DRYWALL FEATHER COMPOUND (OPTIONAL, BY OTHERS)

### 353C-A09-150

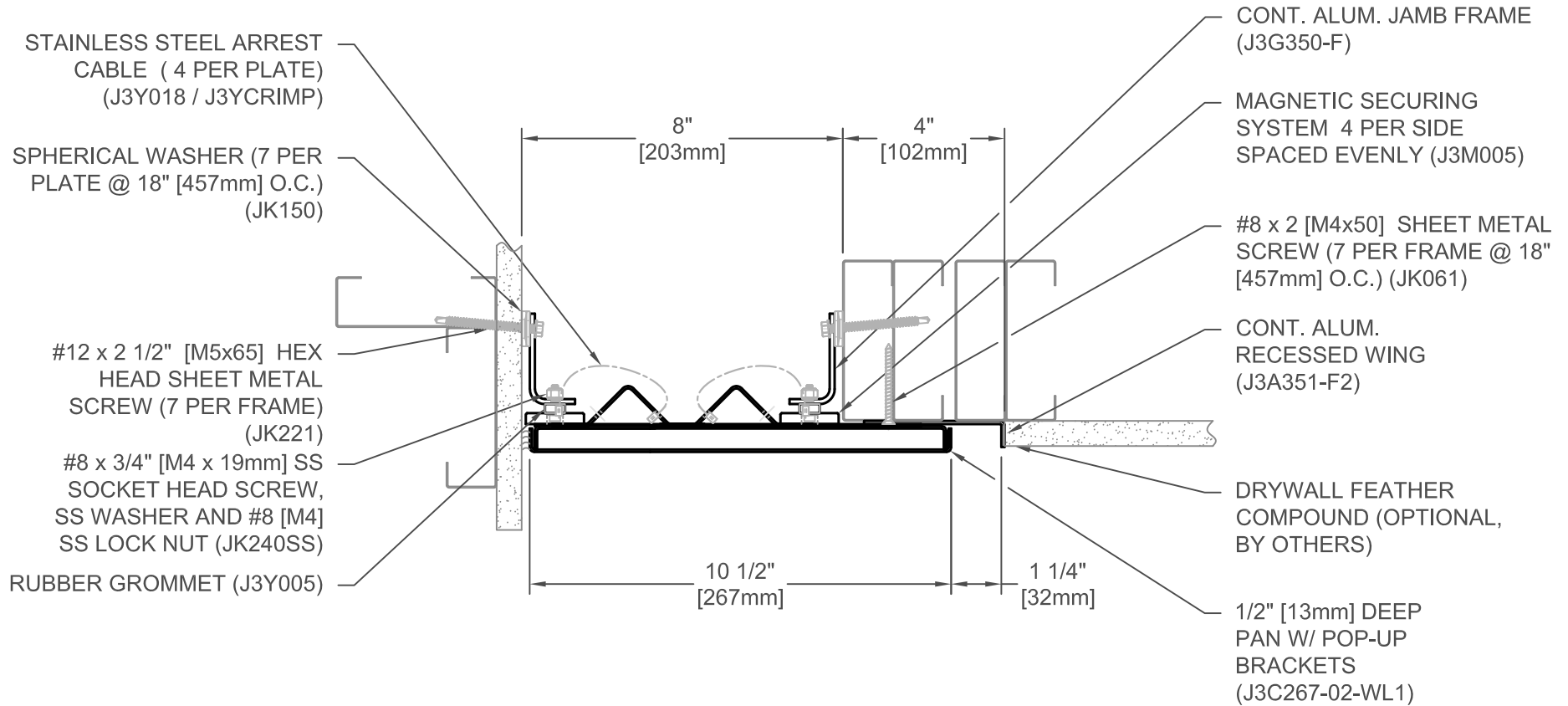
JOINT WIDTH		MOVEMENT			
		MINIMUM		MAXIMUM	
US	mm	US	mm	US	mm
6"	152	2 3/4"	70	12"	305

FINISH: CLEAR ANODIZED
PROJECT:
CUSTOMER:
LOCATION:

APPLICATION -  
WALL/CORNER CONCEALED PAN EXPANSION JOINT SYSTEM- CLEAR ANODIZED PAN SYSTEM

DATE:	3/31/21
SCALE:	1:4
DOC:	CADJM.233/R2





### 353C-A09-200

JOINT WIDTH		MOVEMENT			
		MINIMUM		MAXIMUM	
US	mm	US	mm	US	mm
8"	203	2 3/4"	70	16"	406

FINISH: CLEAR ANODIZED

PROJECT:

CUSTOMER:

LOCATION:

APPLICATION -  
WALL/CORNER CONCEALED PAN EXPANSION JOINT SYSTEM- CLEAR ANODIZED PAN SYSTEM

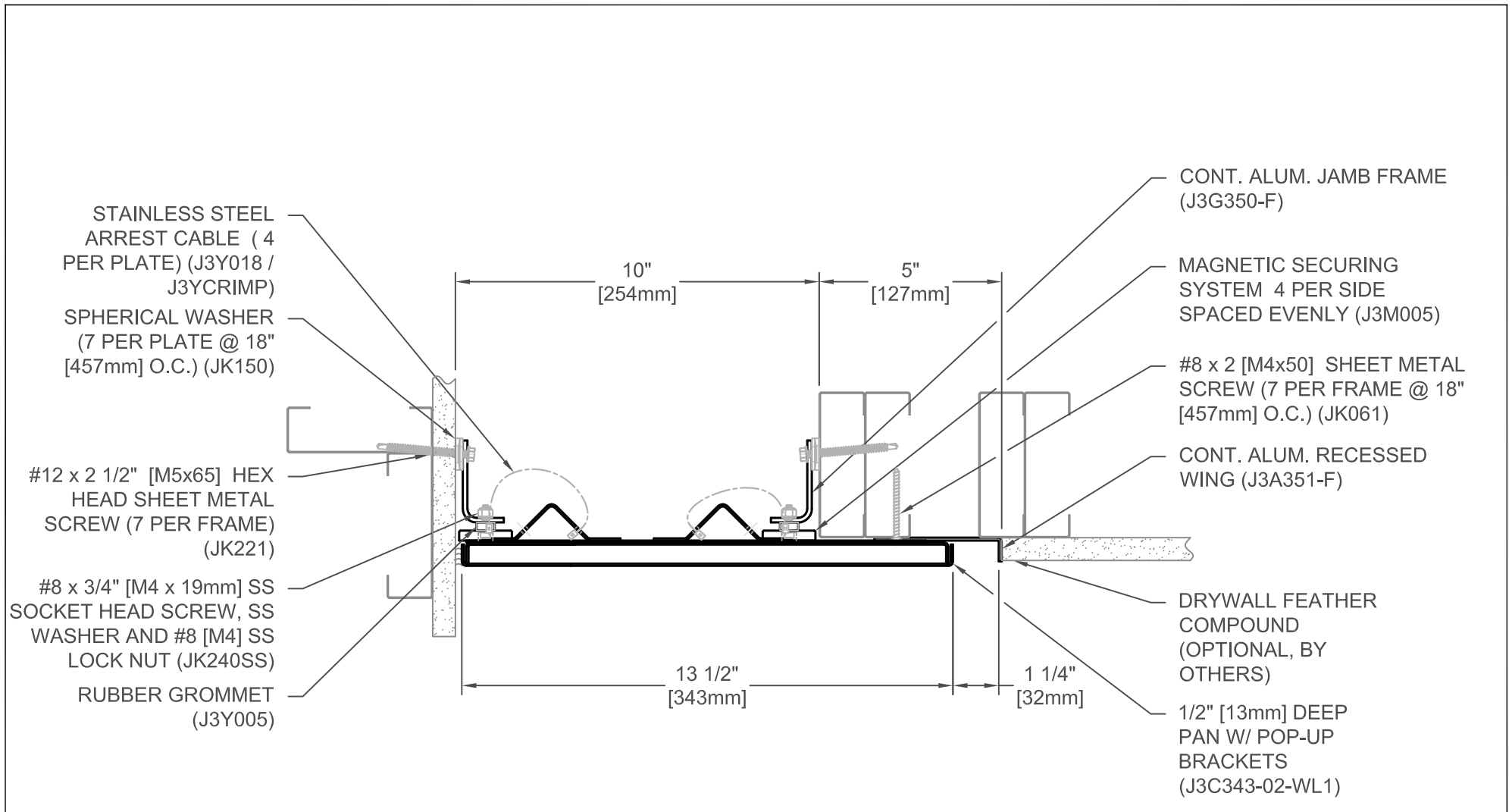
DATE: 3/31/21

SCALE: 1:4

DOC: CADJM.233/R2

**inpro.**

For More Information Visit: [Inprocorp.com](http://Inprocorp.com)



### 353C-A09-250

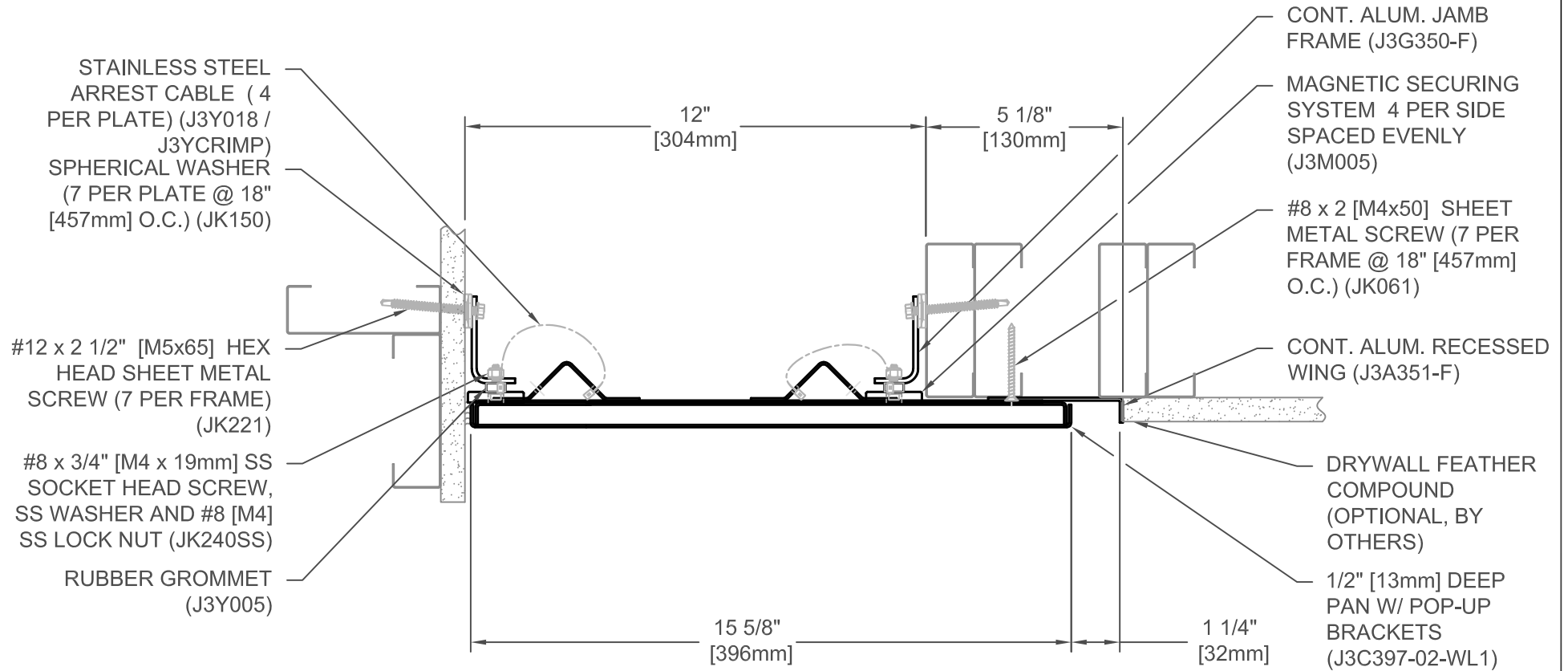
JOINT WIDTH		MOVEMENT			
		MINIMUM		MAXIMUM	
US	mm	US	mm	US	mm
10"	254	2 3/4"	70	20"	508

FINISH: CLEAR ANODIZED
PROJECT:
CUSTOMER:
LOCATION:

APPLICATION -  
WALL/CORNER CONCEALED PAN EXPANSION JOINT SYSTEM- CLEAR ANODIZED PAN SYSTEM

DATE:	3/31/21
SCALE:	1:4
DOC:	CADJM.233/R2





### 353C-A09-300

JOINT WIDTH		MOVEMENT			
		MINIMUM		MAXIMUM	
US	mm	US	mm	US	mm
12"	305	2 3/4"	70	24"	610

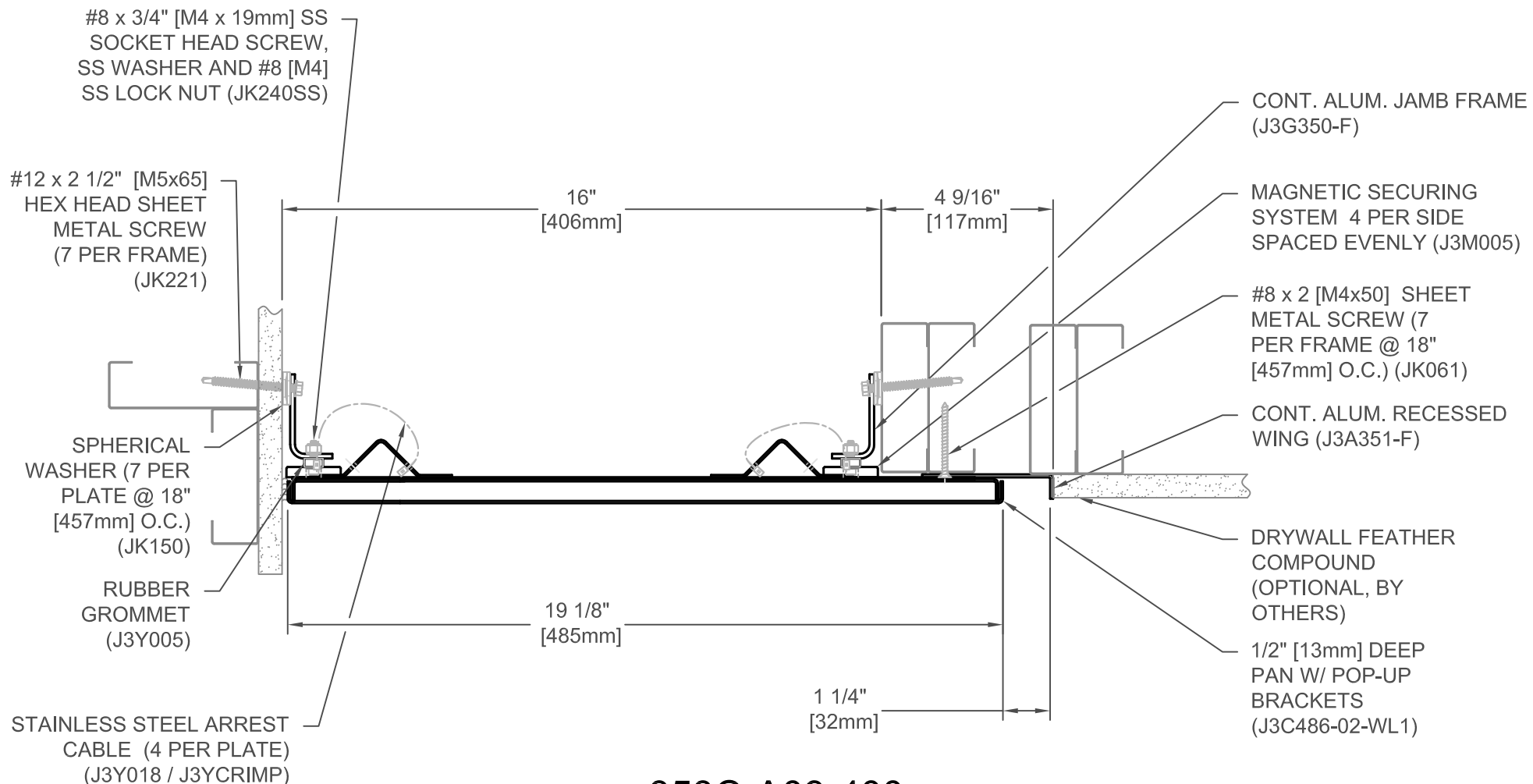
FINISH: CLEAR ANODIZED
PROJECT:
CUSTOMER:
LOCATION:

APPLICATION -  
WALL/CORNER CONCEALED PAN EXPANSION JOINT SYSTEM- CLEAR ANODIZED PAN SYSTEM

DATE:	3/31/21
SCALE:	1:4
DOC:	CADJM.233/R2



For More Information Visit: [Inprocorp.com](http://Inprocorp.com)



### 353C-A09-400

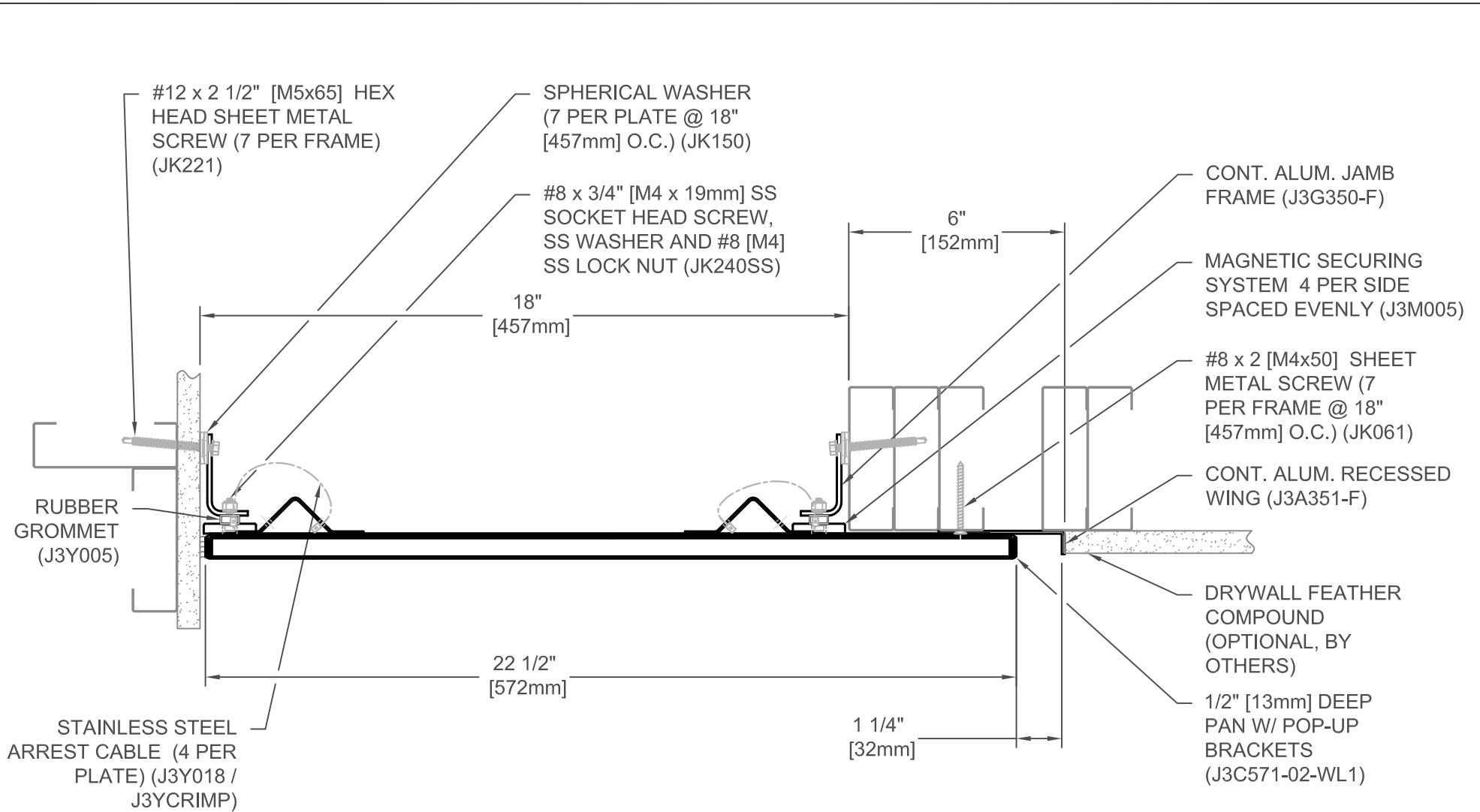
JOINT WIDTH		MOVEMENT			
		MINIMUM		MAXIMUM	
US	mm	US	mm	US	mm
16"	406	2 3/4"	70	32"	813

FINISH: CLEAR ANODIZED
PROJECT:
CUSTOMER:
LOCATION:

APPLICATION -  
WALL/CORNER CONCEALED PAN EXPANSION JOINT SYSTEM- CLEAR ANODIZED PAN SYSTEM

DATE:	3/31/21
SCALE:	1:4
DOC:	CADJM.233/R2





### 353C-A09-450

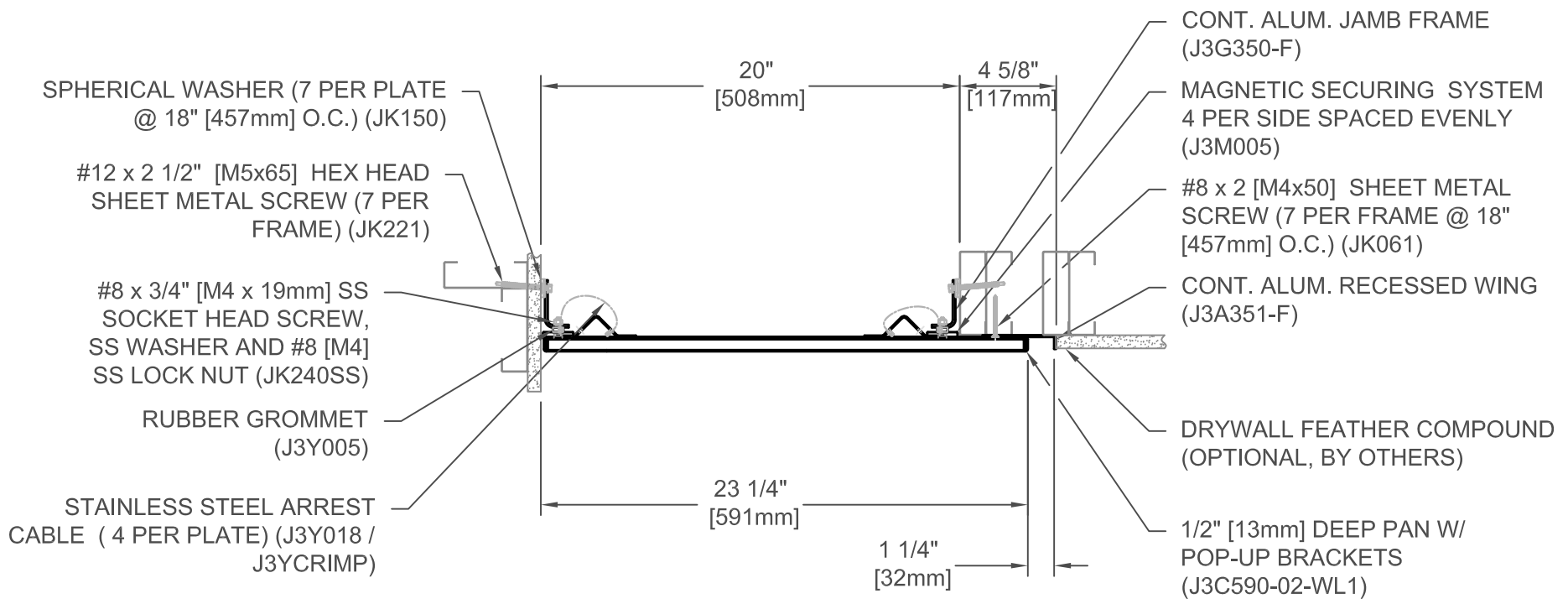
JOINT WIDTH		MOVEMENT			
		MINIMUM		MAXIMUM	
US	mm	US	mm	US	mm
18"	457	2 3/4"	70	36"	914

FINISH: CLEAR ANODIZED
PROJECT:
CUSTOMER:
LOCATION:

APPLICATION -  
WALL/CORNER CONCEALED PAN EXPANSION JOINT SYSTEM- CLEAR ANODIZED PAN SYSTEM

DATE:	3/31/21
SCALE:	1:4
DOC:	CADJM.233/R2





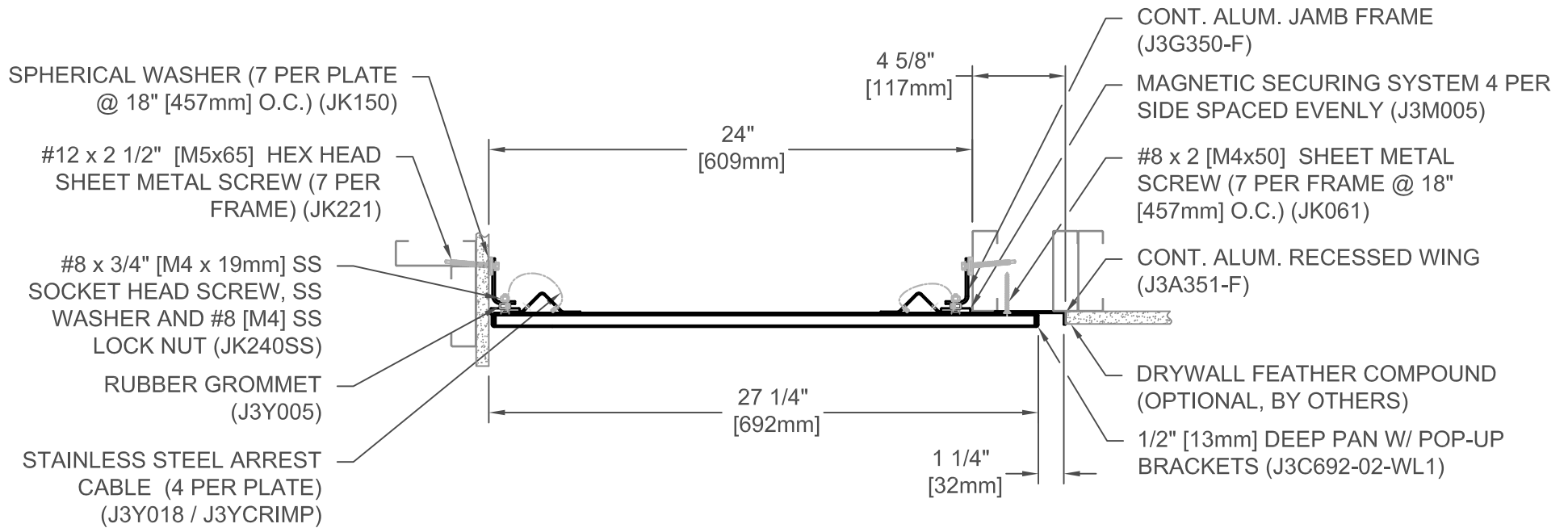
### 353C-A09-500

JOINT WIDTH		MOVEMENT			
		MINIMUM		MAXIMUM	
US	mm	US	mm	US	mm
20"	508	2 3/4"	70	40"	1016

FINISH: CLEAR ANODIZED
PROJECT:
CUSTOMER:
LOCATION:

APPLICATION -  
WALL/CORNER CONCEALED PAN EXPANSION JOINT SYSTEM- CLEAR ANODIZED PAN SYSTEM

DATE:	3/31/21
SCALE:	1:8
DOC:	CADJM.233/R2



### 353C-A09-600

JOINT WIDTH		MOVEMENT			
		MINIMUM		MAXIMUM	
US	mm	US	mm	US	mm
24"	610	2 3/4"	70	48"	1219

FINISH: CLEAR ANODIZED

PROJECT:

CUSTOMER:

LOCATION:

APPLICATION -  
WALL/CORNER CONCEALED PAN EXPANSION JOINT SYSTEM- CLEAR ANODIZED PAN SYSTEM

DATE: 3/31/21

SCALE: 1:8

DOC: CADJM.233/R2

**inpro.**  
For More Information Visit: [Inprocorp.com](http://Inprocorp.com)