

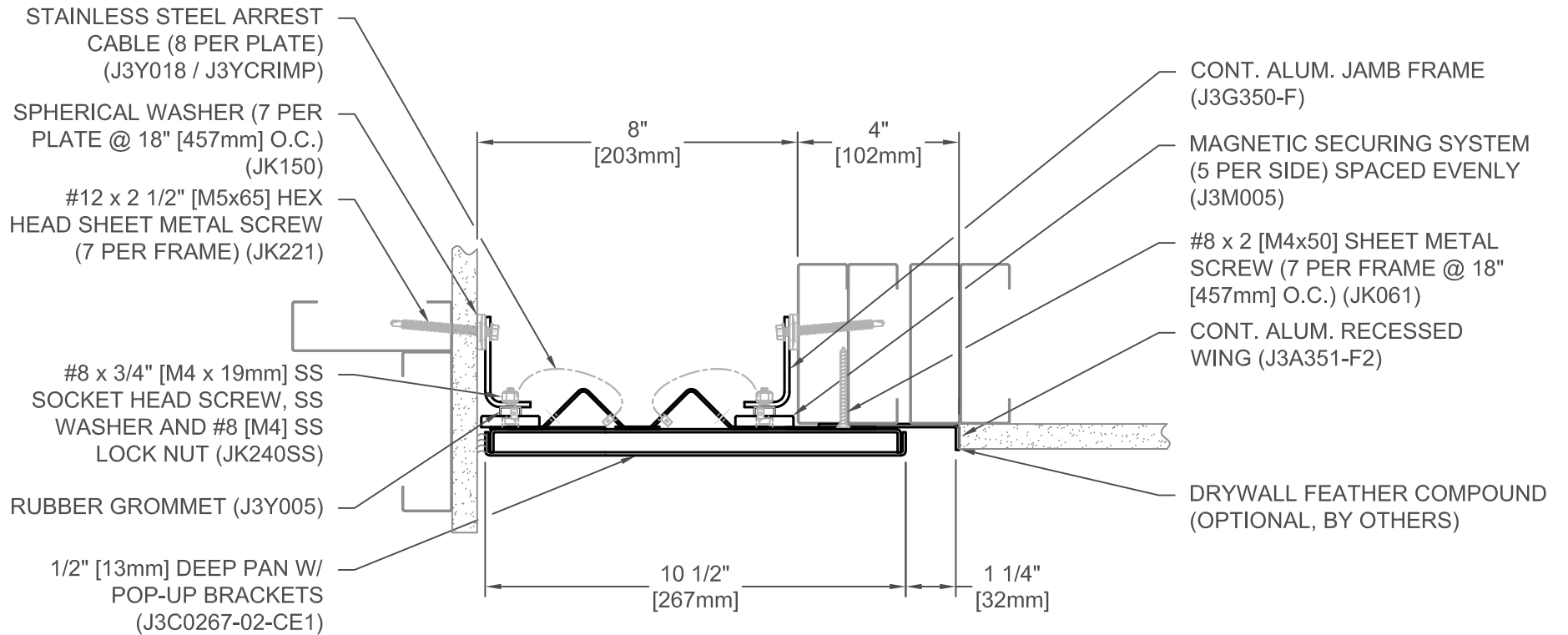
### 353C-A18-150

JOINT WIDTH		MOVEMENT			
		MINIMUM		MAXIMUM	
US	mm	US	mm	US	mm
6"	152	2 3/4"	70	12"	305

FINISH: CLEAR ANODIZED
PROJECT:
CUSTOMER:
LOCATION:

APPLICATION -  
 CEILING/WALL CONCEALED PAN EXPANSION JOINT SYSTEM- CLEAR  
 ANODIZED PAN SYSTEM

DATE:	3/31/21
SCALE:	1:4
DOC:	CADJM.234/R2



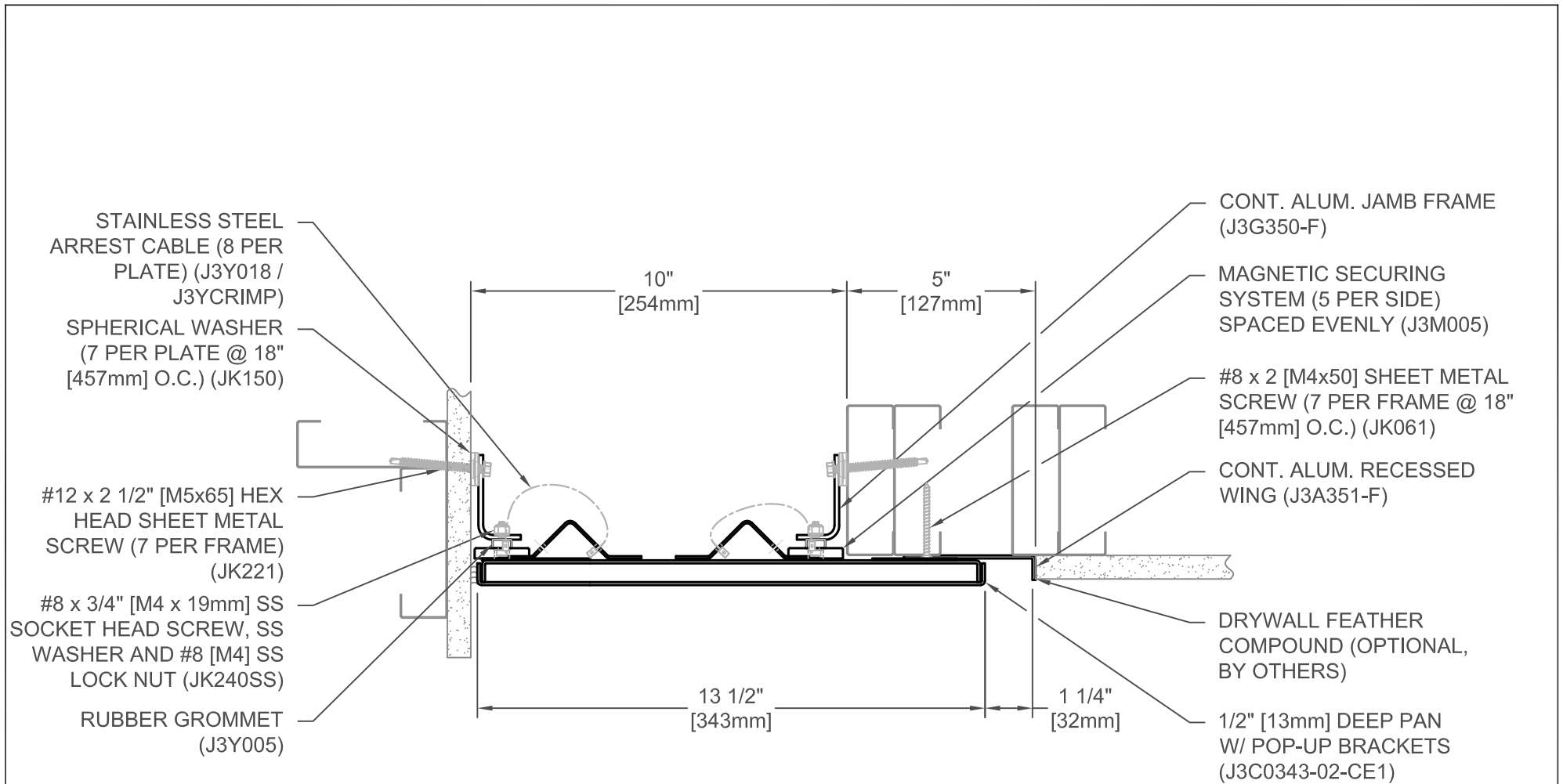
### 353C-A18-200

JOINT WIDTH		MOVEMENT			
		MINIMUM		MAXIMUM	
US	mm	US	mm	US	mm
8"	203	2 3/4"	70	16"	406

FINISH: CLEAR ANODIZED
PROJECT:
CUSTOMER:
LOCATION:

APPLICATION -  
 CEILING/WALL CONCEALED PAN EXPANSION JOINT SYSTEM- CLEAR  
 ANODIZED PAN SYSTEM

DATE:	3/31/21
SCALE:	1:4
DOC:	CADJM.234/R2



## 353C-A18-250

JOINT WIDTH		MOVEMENT			
		MINIMUM		MAXIMUM	
US	mm	US	mm	US	mm
10"	254	2 3/4"	70	20"	508

FINISH: CLEAR ANODIZED

PROJECT:

CUSTOMER:

LOCATION:

APPLICATION -  
CEILING/WALL CONCEALED PAN EXPANSION JOINT SYSTEM- CLEAR  
ANODIZED PAN SYSTEM

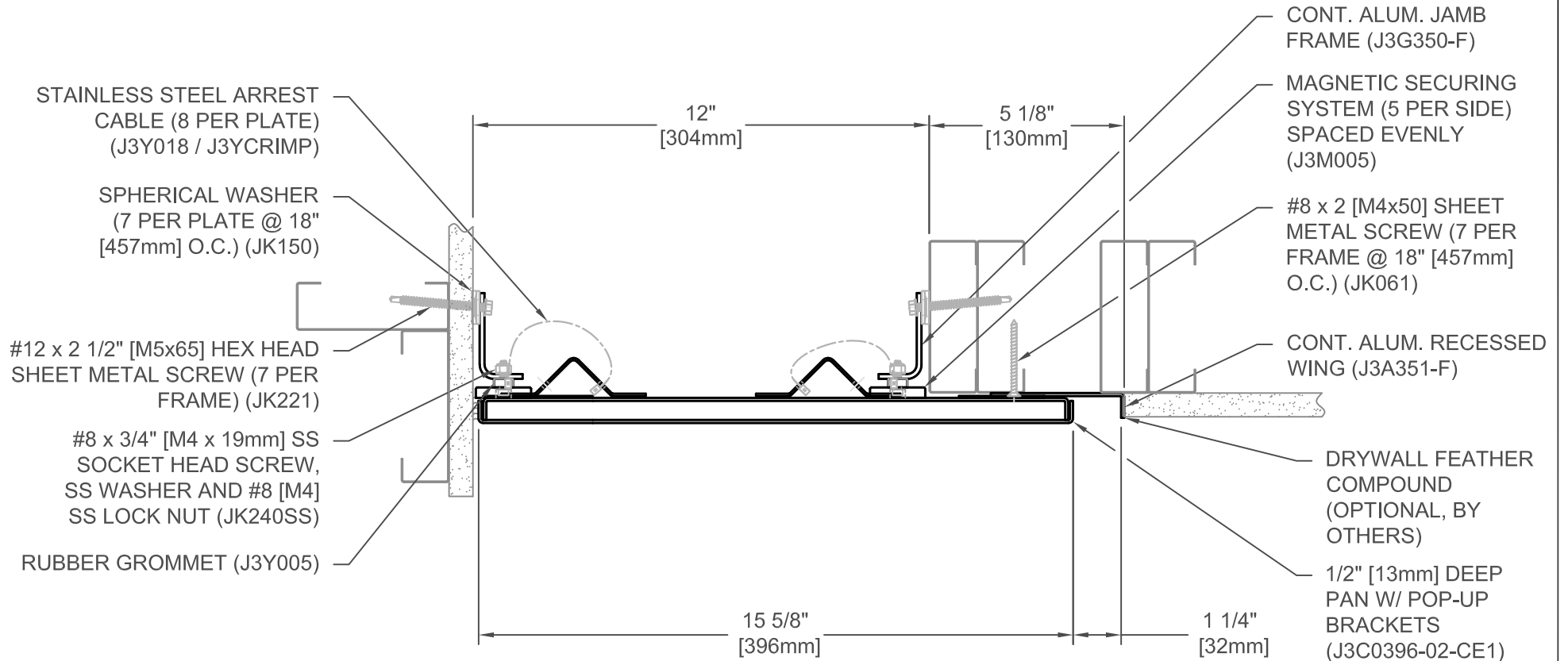
DATE: 3/31/21

SCALE: 1:4

DOC: CADJM.234/R2

**inpro.**

For More Information Visit: [Inprocorp.com](http://Inprocorp.com)



### 353C-A18-300

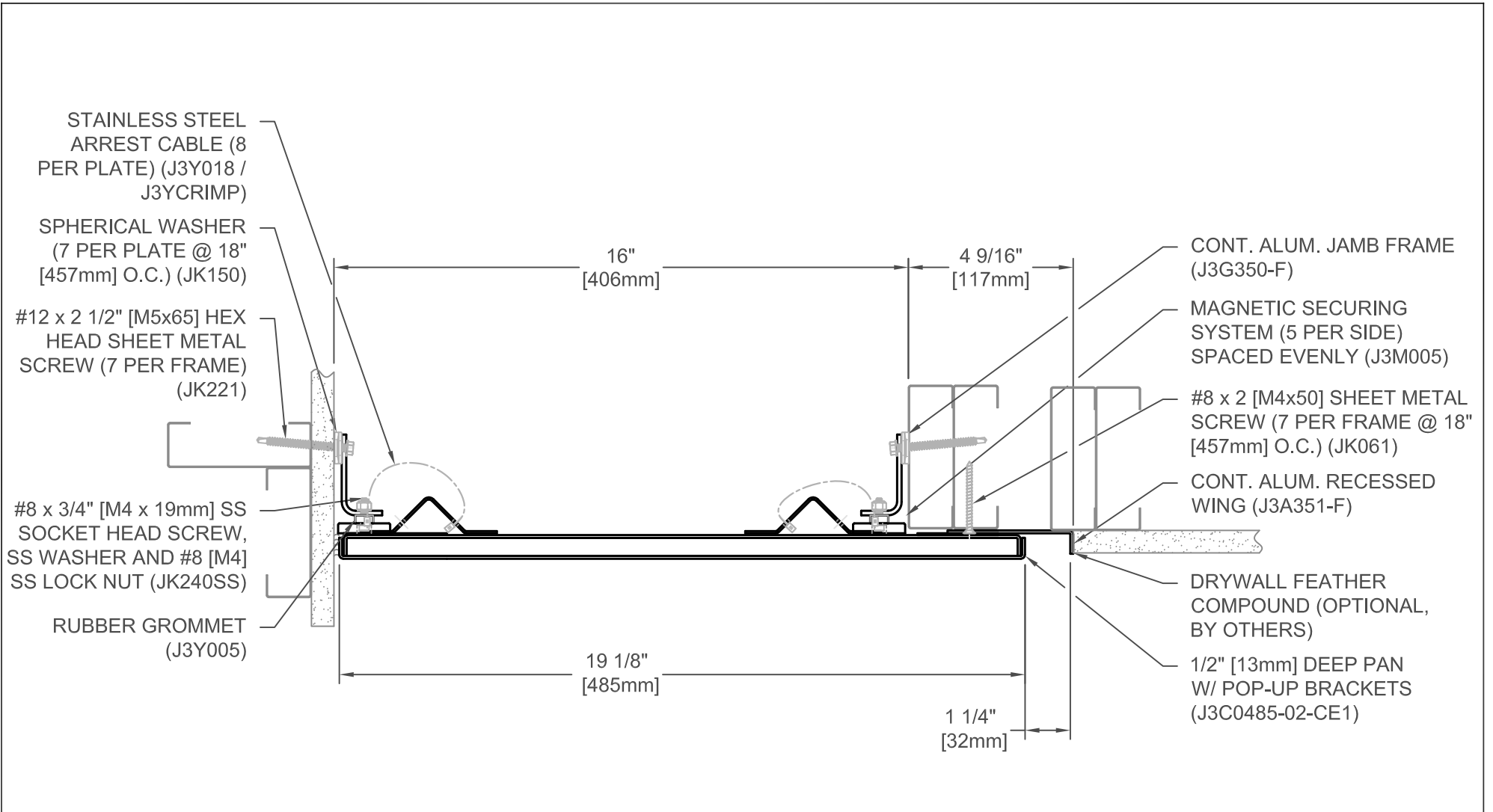
JOINT WIDTH		MOVEMENT			
		MINIMUM		MAXIMUM	
US	mm	US	mm	US	mm
12"	305	2 3/4"	70	24"	610

FINISH: CLEAR ANODIZED
PROJECT:
CUSTOMER:
LOCATION:

APPLICATION -  
**CEILING/WALL CONCEALED PAN EXPANSION JOINT SYSTEM- CLEAR ANODIZED PAN SYSTEM**

DATE:	3/31/21
SCALE:	1:4
DOC:	CADJM.234/R2





### 353C-A18-400

JOINT WIDTH		MOVEMENT			
		MINIMUM		MAXIMUM	
US	mm	US	mm	US	mm
16"	406	2 3/4"	70	32"	813

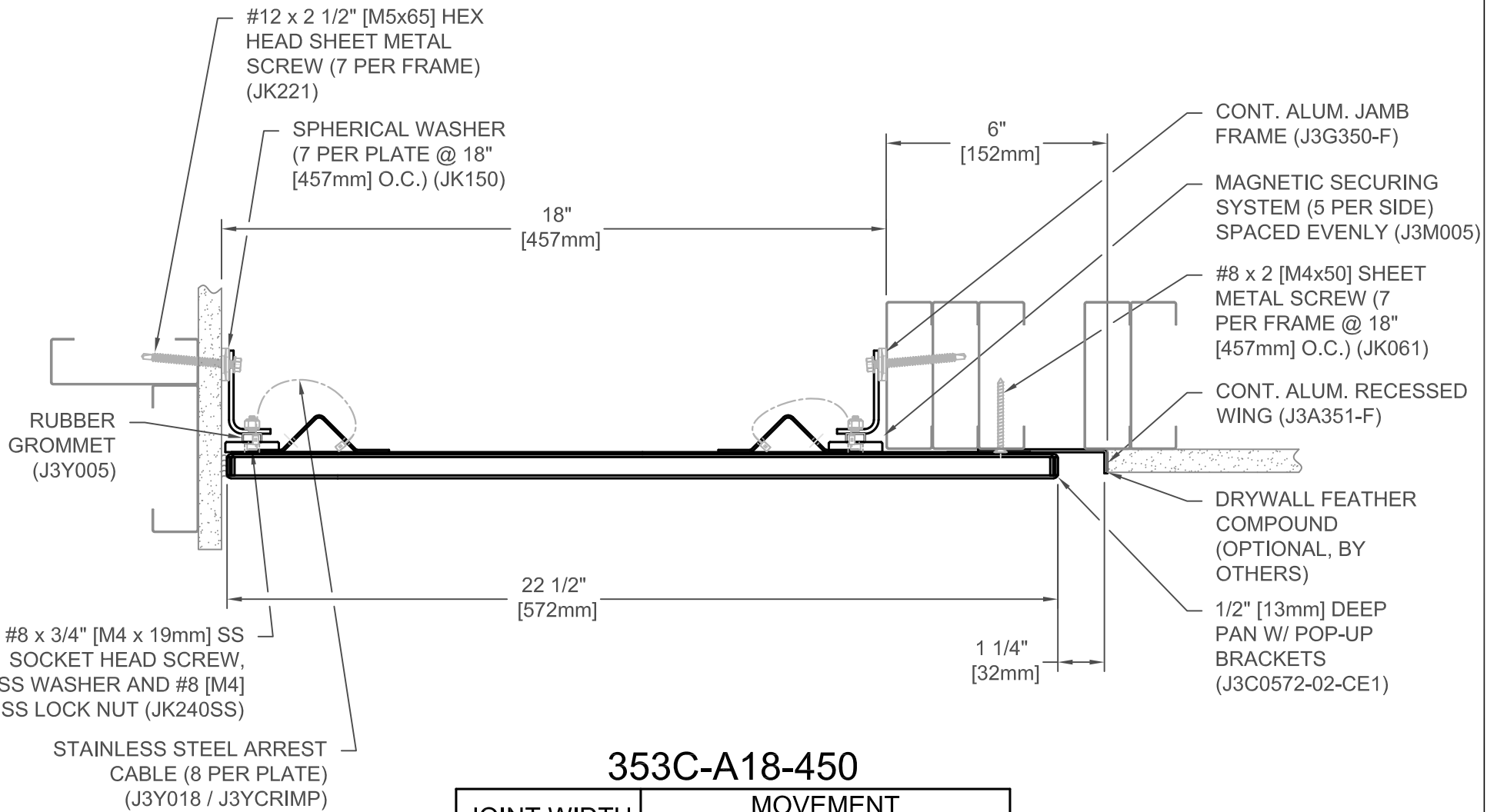
FINISH: CLEAR ANODIZED
PROJECT:
CUSTOMER:
LOCATION:

APPLICATION -  
**CEILING/WALL CONCEALED PAN EXPANSION JOINT SYSTEM- CLEAR ANODIZED PAN SYSTEM**

DATE:	3/31/21
SCALE:	1:4
DOC:	CADJM.234/R2



For More Information Visit: [Inprocorp.com](http://Inprocorp.com)



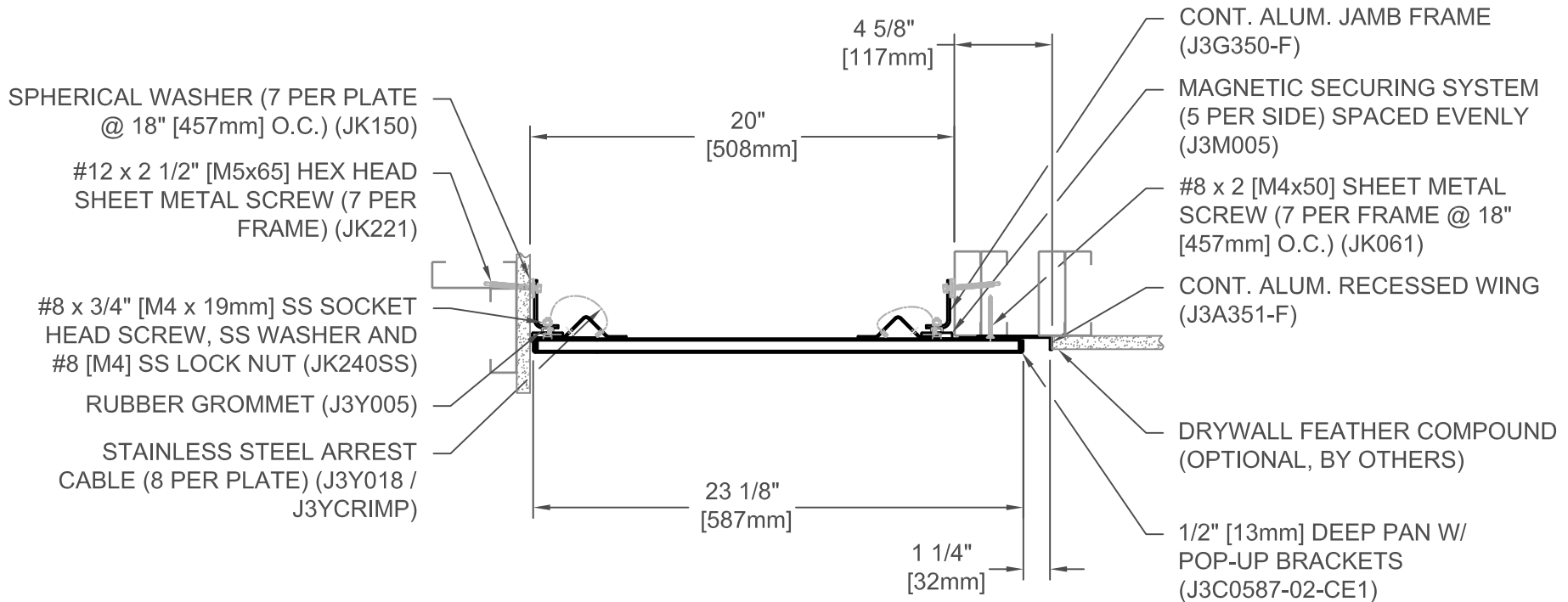
### 353C-A18-450

JOINT WIDTH		MOVEMENT			
		MINIMUM		MAXIMUM	
US	mm	US	mm	US	mm
18"	457	2 3/4"	70	36"	914

FINISH: CLEAR ANODIZED
PROJECT:
CUSTOMER:
LOCATION:

APPLICATION -  
 CEILING/WALL CONCEALED PAN EXPANSION JOINT SYSTEM- CLEAR ANODIZED PAN SYSTEM

DATE:	3/31/21
SCALE:	1:4
DOC:	CADJM.234/R2



### 353C-A18-500

JOINT WIDTH		MOVEMENT			
		MINIMUM		MAXIMUM	
US	mm	US	mm	US	mm
20"	508	2 3/4"	70	40"	1016

FINISH: CLEAR ANODIZED

PROJECT:

CUSTOMER:

LOCATION:

APPLICATION -  
CEILING/WALL CONCEALED PAN EXPANSION JOINT SYSTEM- CLEAR ANODIZED PAN SYSTEM

DATE: 3/31/21

SCALE: 1:8

DOC: CADJM.234/R2

**inpro.**

For More Information Visit: [Inprocorp.com](http://Inprocorp.com)

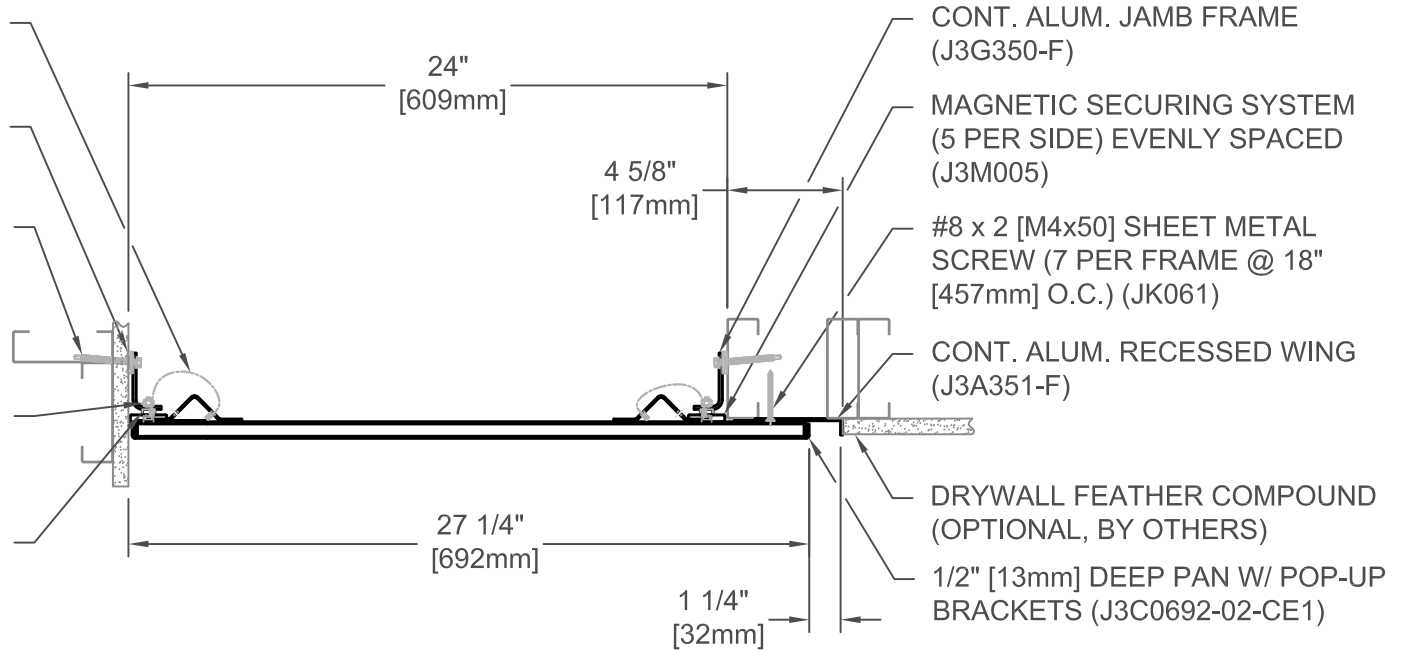
STAINLESS STEEL ARREST CABLE  
(10 PER PLATE) (J3Y018 / J3YCRIMP)

SPHERICAL WASHER (7 PER  
PLATE @ 18" [457mm] O.C.) (JK150)

#12 x 2 1/2" [M5x65] HEX  
HEAD SHEET METAL SCREW  
(7 PER FRAME) (JK221)

#8 x 3/4" [M4 x 19mm] SS SOCKET  
HEAD SCREW, SS WASHER AND  
#8 [M4] SS LOCK NUT (JK240SS)

RUBBER GROMMET (J3Y005)



CONT. ALUM. JAMB FRAME  
(J3G350-F)

MAGNETIC SECURING SYSTEM  
(5 PER SIDE) EVENLY SPACED  
(J3M005)

#8 x 2 [M4x50] SHEET METAL  
SCREW (7 PER FRAME @ 18"  
[457mm] O.C.) (JK061)

CONT. ALUM. RECESSED WING  
(J3A351-F)

DRYWALL FEATHER COMPOUND  
(OPTIONAL, BY OTHERS)

1/2" [13mm] DEEP PAN W/ POP-UP  
BRACKETS (J3C0692-02-CE1)

### 353C-A18-600

JOINT WIDTH		MOVEMENT			
		MINIMUM		MAXIMUM	
US	mm	US	mm	US	mm
24"	610	2 3/4"	70	48"	1219

FINISH: CLEAR ANODIZED

PROJECT:

CUSTOMER:

LOCATION:

APPLICATION -  
CEILING/WALL CONCEALED PAN EXPANSION JOINT SYSTEM- CLEAR  
ANODIZED PAN SYSTEM

DATE: 3/31/21

SCALE: 1:8

DOC: CADJM.234/R2

**inpro.**  
For More Information Visit: [Inprocorp.com](http://Inprocorp.com)