

### 430-A01-025

JOINT WIDTH		MOVEMENT ±			
		HORIZONTAL		VERTICAL	
US	mm	US	mm	US	mm
1"	25	1/2"	13	1/4"	6

NOTE: TO DETERMINE BLOCKOUT DEPTH, DEDUCT THICKNESS OF THE FIN. FLR. FROM FRAME HEIGHT

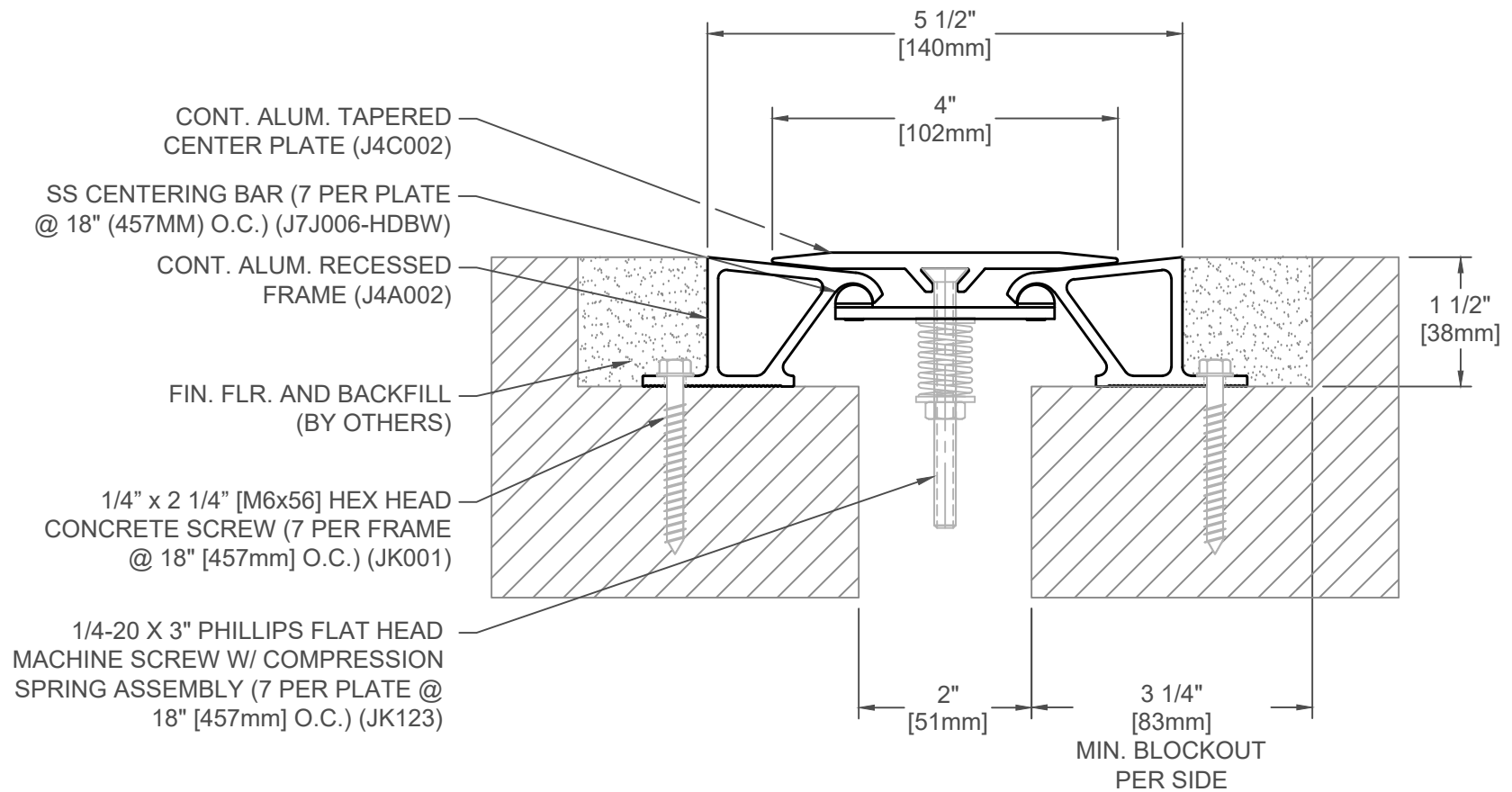
FINISH: MILL
PROJECT:
CUSTOMER:
LOCATION:

APPLICATION-  
RECESSED FLOOR/FLOOR CONDITION  
WITH CENTER BAR

DATE:	11-19-14
SCALE:	1:2
DOC:	CADJM.024/R3

**inpro.**

For More Information Visit: [Inprocorp.com](http://Inprocorp.com)



### 430-A01-050

JOINT WIDTH		MOVEMENT ±			
		HORIZONTAL		VERTICAL	
US	mm	US	mm	US	mm
2"	51	1"	25	1/2"	13

NOTE: TO DETERMINE BLOCKOUT DEPTH, DEDUCT THICKNESS OF THE FIN. FLR. FROM FRAME HEIGHT

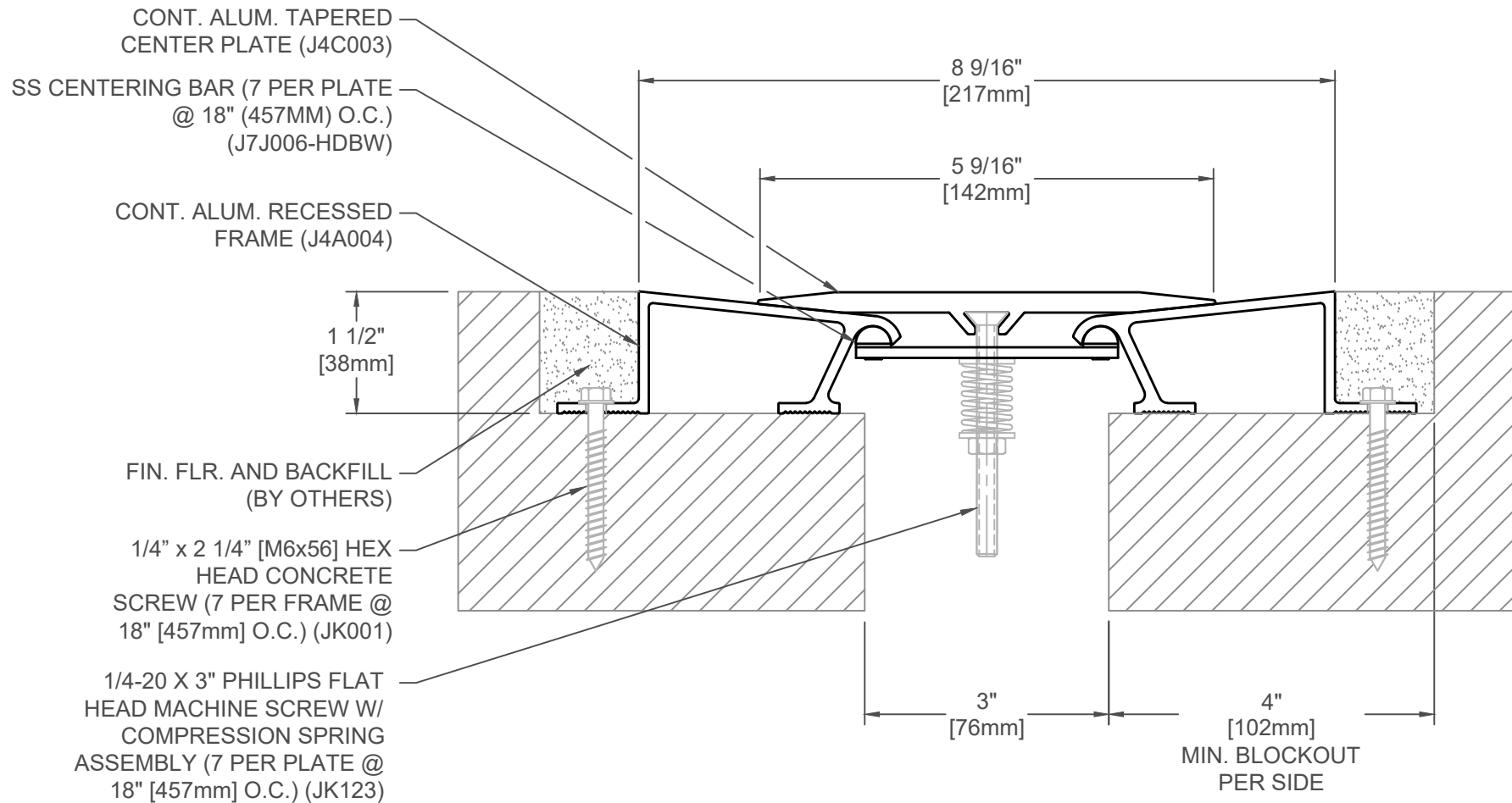
FINISH: MILL
PROJECT:
CUSTOMER:
LOCATION:

APPLICATION-  
RECESSED FLOOR/FLOOR CONDITION  
WITH CENTER BAR

DATE:	11-19-14
SCALE:	1:2
DOC:	CADJM.024/R3

**inpro.**

For More Information Visit: [Inprocorp.com](http://Inprocorp.com)



### 430-A01-075

JOINT WIDTH		MOVEMENT ±			
		HORIZONTAL		VERTICAL	
US	mm	US	mm	US	mm
3"	76	1-1/2"	38	3/4"	19

NOTE: TO DETERMINE BLOCKOUT DEPTH, DEDUCT THICKNESS OF THE FIN. FLR. FROM FRAME HEIGHT

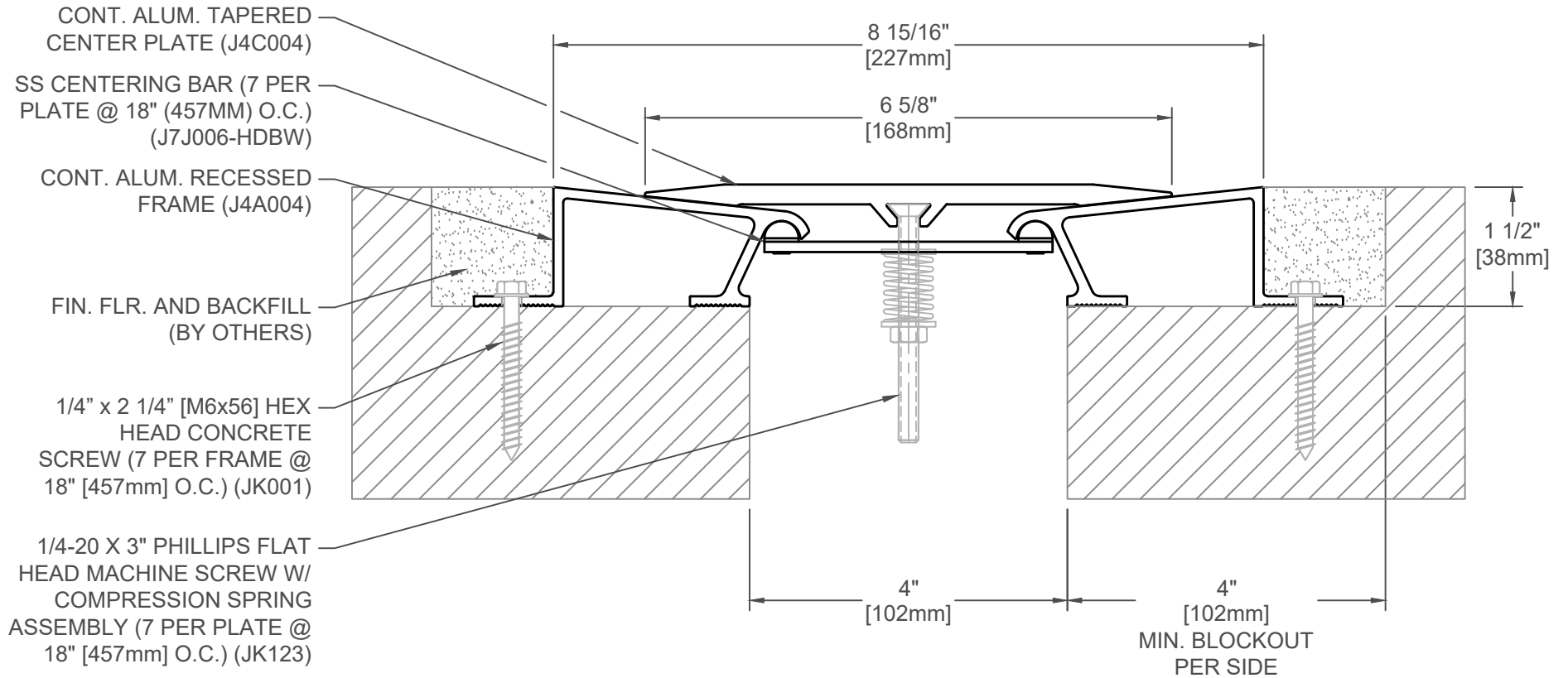
FINISH: MILL
PROJECT:
CUSTOMER:
LOCATION:

APPLICATION-  
RECESSED FLOOR/FLOOR CONDITION  
WITH CENTER BAR

DATE:	11-19-14
SCALE:	1:2
DOC:	CADJM.024/R3

**inpro.**

For More Information Visit: [Inprocorp.com](http://Inprocorp.com)



### 430-A01-100

JOINT WIDTH		MOVEMENT ±			
		HORIZONTAL		VERTICAL	
US	mm	US	mm	US	mm
4"	102	2"	51	1"	25

NOTE: TO DETERMINE BLOCKOUT DEPTH, DEDUCT THICKNESS OF THE FIN. FLR. FROM FRAME HEIGHT

FINISH: MILL
PROJECT:
CUSTOMER:
LOCATION:

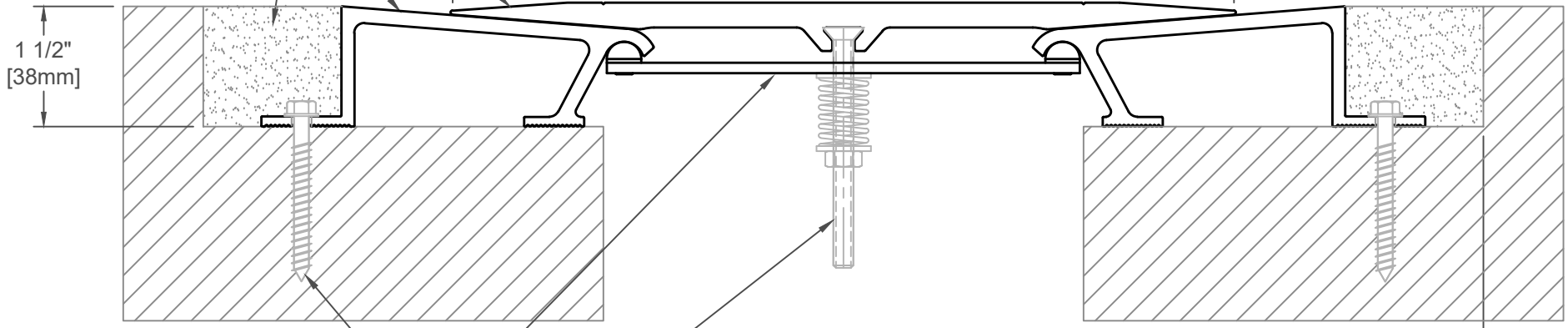
APPLICATION-  
RECESSED FLOOR/FLOOR CONDITION  
WITH CENTER BAR

DATE:	11-19-14
SCALE:	1:2
DOC:	CADJM.024/R3

**inpro.**

For More Information Visit: [Inprocorp.com](http://Inprocorp.com)

CONT. ALUM. TAPERED CENTER PLATE (J4C005)  
 CONT. ALUM. RECESSED FRAME (J4A005)  
 FIN. FLR. AND BACKFILL (BY OTHERS)



1/4" x 2 1/4" [M6x56] HEX HEAD CONCRETE SCREW (7 PER FRAME @ 18" [457mm] O.C.) (JK001)

SS CENTERING BAR (7 PER PLATE @ 8" (457MM) O.C.) (J7J012-HDBW)

1/4-20 X 3" PHILLIPS FLAT HEAD MACHINE SCREW W/ COMPRESSION SPRING ASSEMBLY (7 PER PLATE @ 18" [457mm] O.C.) (JK123)

### 430-A01-150

JOINT WIDTH		MOVEMENT ±			
		HORIZONTAL		VERTICAL	
US	mm	US	mm	US	mm
6"	152	3"	76	1-1/2"	38

NOTE: TO DETERMINE BLOCKOUT DEPTH, DEDUCT THICKNESS OF THE FIN. FLR. FROM FRAME HEIGHT

FINISH: MILL

PROJECT:

CUSTOMER:

LOCATION:

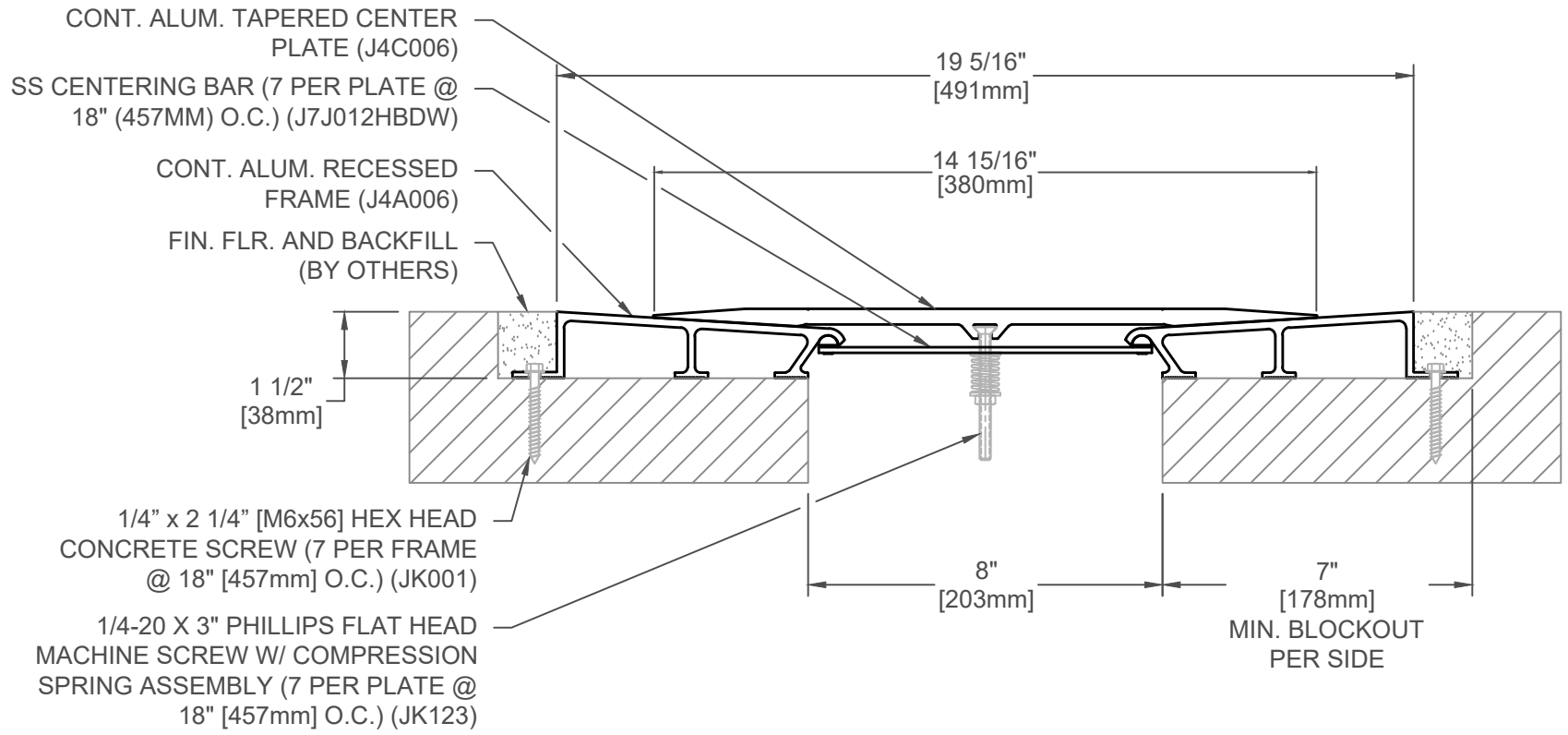
APPLICATION-  
 RECESSED FLOOR/FLOOR CONDITION  
 WITH CENTER BAR

DATE: 11-19-14

SCALE: 1:2

DOC: CADJM.024/R3





### 430-A01-200

JOINT WIDTH		MOVEMENT ±			
		HORIZONTAL		VERTICAL	
US	mm	US	mm	US	mm
8"	203	4"	102	2"	51

NOTE: TO DETERMINE BLOCKOUT DEPTH, DEDUCT THICKNESS OF THE FIN. FLR. FROM FRAME HEIGHT

FINISH: MILL
PROJECT:
CUSTOMER:
LOCATION:

APPLICATION-  
RECESSED FLOOR/FLOOR CONDITION  
WITH CENTER BAR

DATE: 5-13-15  
SCALE: 1:4  
DOC: CADJM.024/R3

