

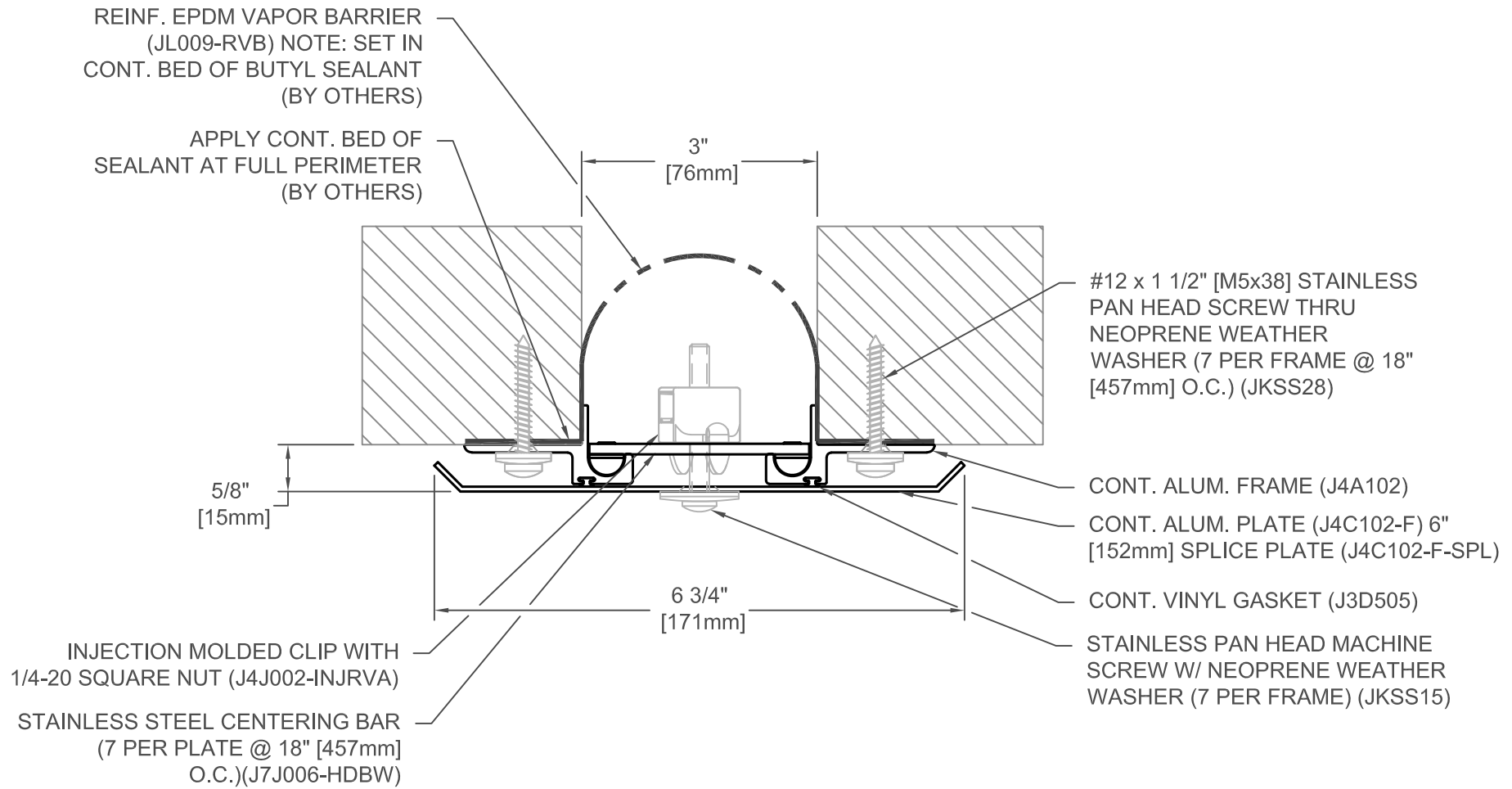
### 491E-A07-050

JOINT WIDTH		MOVEMENT ±			
		HORIZONTAL		VERTICAL	
US	mm	US	mm	US	mm
2"	51	9/16"	14	1"	25

FINISH: CLEAR ANODIZED
PROJECT:
CUSTOMER:
LOCATION:

APPLICATION-  
EXTERIOR CENTERING BAR SYSTEM  
SURFACE MOUNT FRAME WALL/WALL, CEILING/CEILING CONDITION

DATE:	10-5-21
SCALE:	1:2
DOC:	CADJM.242/R1



### 491E-A07-075

JOINT WIDTH		MOVEMENT ±			
		HORIZONTAL		VERTICAL	
US	mm	US	mm	US	mm
3"	76	1-1/2"	38	1-1/2"	38

FINISH: CLEAR ANODIZED
PROJECT:
CUSTOMER:
LOCATION:

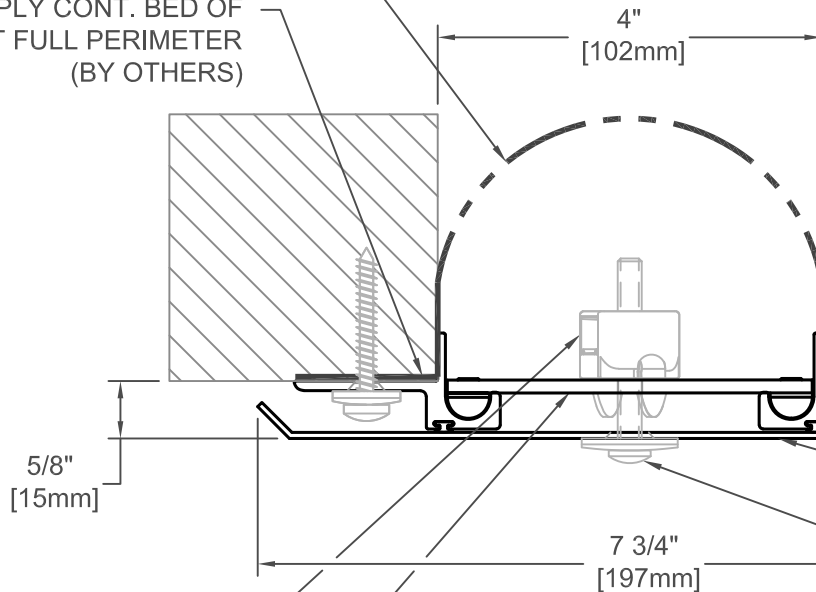
APPLICATION-  
 EXTERIOR CENTERING BAR SYSTEM  
 SURFACE MOUNT FRAME WALL/WALL, CEILING/CEILING CONDITION

DATE:	10-5-21
SCALE:	1:2
DOC:	CADJM.242/R1



REINF. EPDM VAPOR BARRIER  
(JL009-RVB) NOTE: SET IN  
CONT. BED OF BUTYL SEALANT  
(BY OTHERS)

APPLY CONT. BED OF  
SEALANT AT FULL PERIMETER  
(BY OTHERS)



#12 x 1 1/2" [M5x38] STAINLESS  
PAN HEAD SCREW THRU  
NEOPRENE WEATHER  
WASHER (7 PER FRAME @ 18"  
[457mm] O.C.) (JKSS28)

CONT. ALUM. FRAME (J4A102)  
CONT. VINYL GASKET (J3D505)  
CONT. ALUM. PLATE (J4C103-F) 6"  
[152mm] SPLICE PLATE (J4C103-F-SPL)

STAINLESS PAN HEAD MACHINE  
SCREW W/ NEOPRENE WEATHER  
WASHER (7 PER FRAME) (JKSS15)

INJECTION MOLDED CLIP  
WITH 1/4-20 SQUARE NUT  
(J4J002-INJRVA)

STAINLESS STEEL CENTERING BAR  
(7 PER PLATE @ 18" [457mm]  
O.C.)(J7J006-HDBW)

### 491E-A07-100

JOINT WIDTH		MOVEMENT ±			
		HORIZONTAL		VERTICAL	
US	mm	US	mm	US	mm
4"	102	2"	51	2"	51

FINISH: CLEAR ANODIZED

PROJECT:

CUSTOMER:

LOCATION:

APPLICATION-  
EXTERIOR CENTERING BAR SYSTEM  
SURFACE MOUNT FRAME WALL/WALL, CEILING/CEILING CONDITION

DATE: 10-5-21

SCALE: 1:2

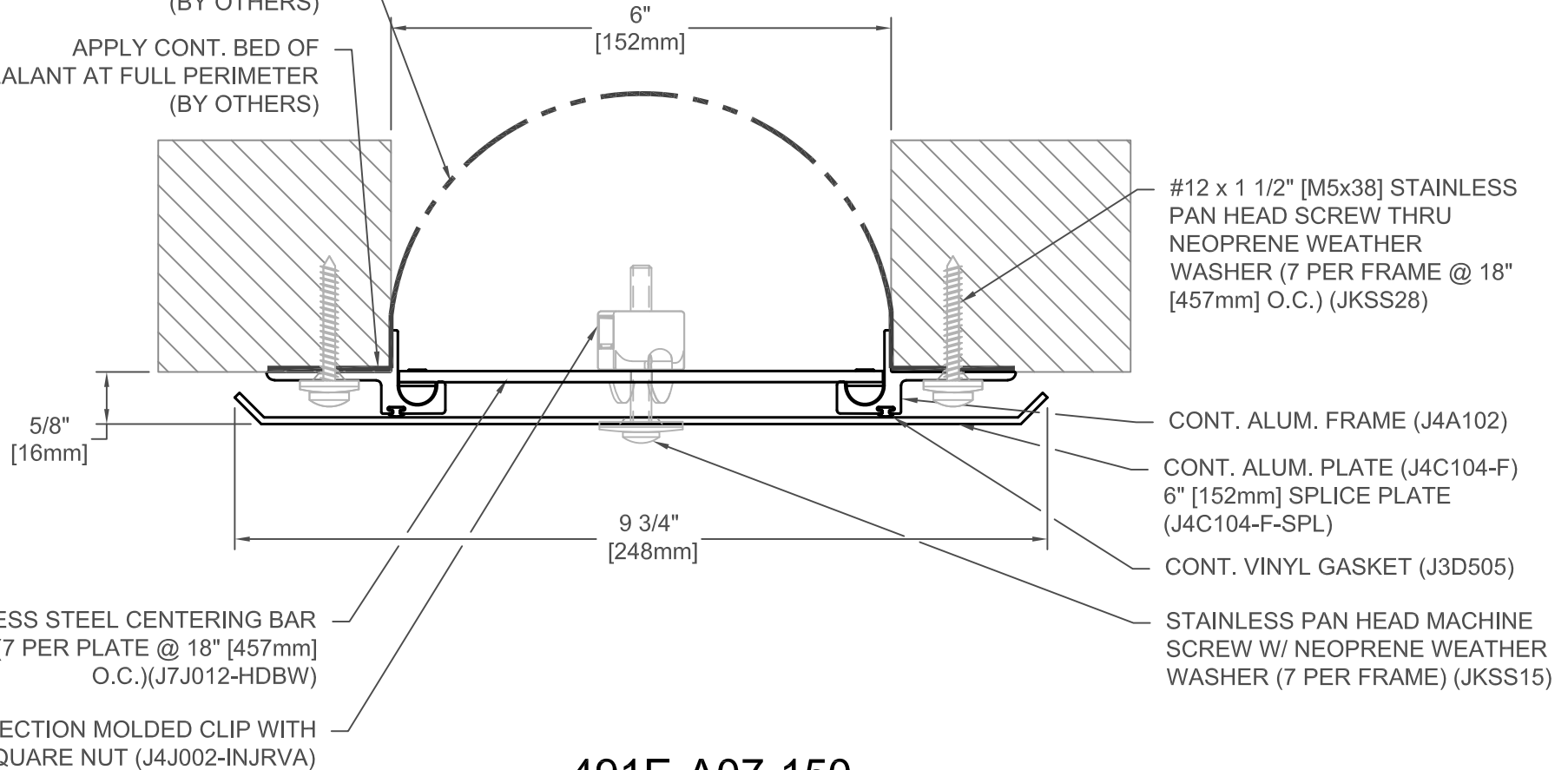
DOC: CADJM.242/R1

**inpro.**

For More Information Visit: [Inprocorp.com](http://Inprocorp.com)

REINF. EPDM VAPOR BARRIER  
(JL012-RVB) NOTE: SET IN  
CONT. BED OF BUTYL SEALANT  
(BY OTHERS)

APPLY CONT. BED OF  
SEALANT AT FULL PERIMETER  
(BY OTHERS)



#12 x 1 1/2" [M5x38] STAINLESS  
PAN HEAD SCREW THRU  
NEOPRENE WEATHER  
WASHER (7 PER FRAME @ 18"  
[457mm] O.C.) (JKSS28)

CONT. ALUM. FRAME (J4A102)

CONT. ALUM. PLATE (J4C104-F)  
6" [152mm] SPLICE PLATE  
(J4C104-F-SPL)

CONT. VINYL GASKET (J3D505)

STAINLESS PAN HEAD MACHINE  
SCREW W/ NEOPRENE WEATHER  
WASHER (7 PER FRAME) (JKSS15)

STAINLESS STEEL CENTERING BAR  
(7 PER PLATE @ 18" [457mm]  
O.C.)(J7J012-HDBW)

INJECTION MOLDED CLIP WITH  
1/4-20 SQUARE NUT (J4J002-INJRVA)

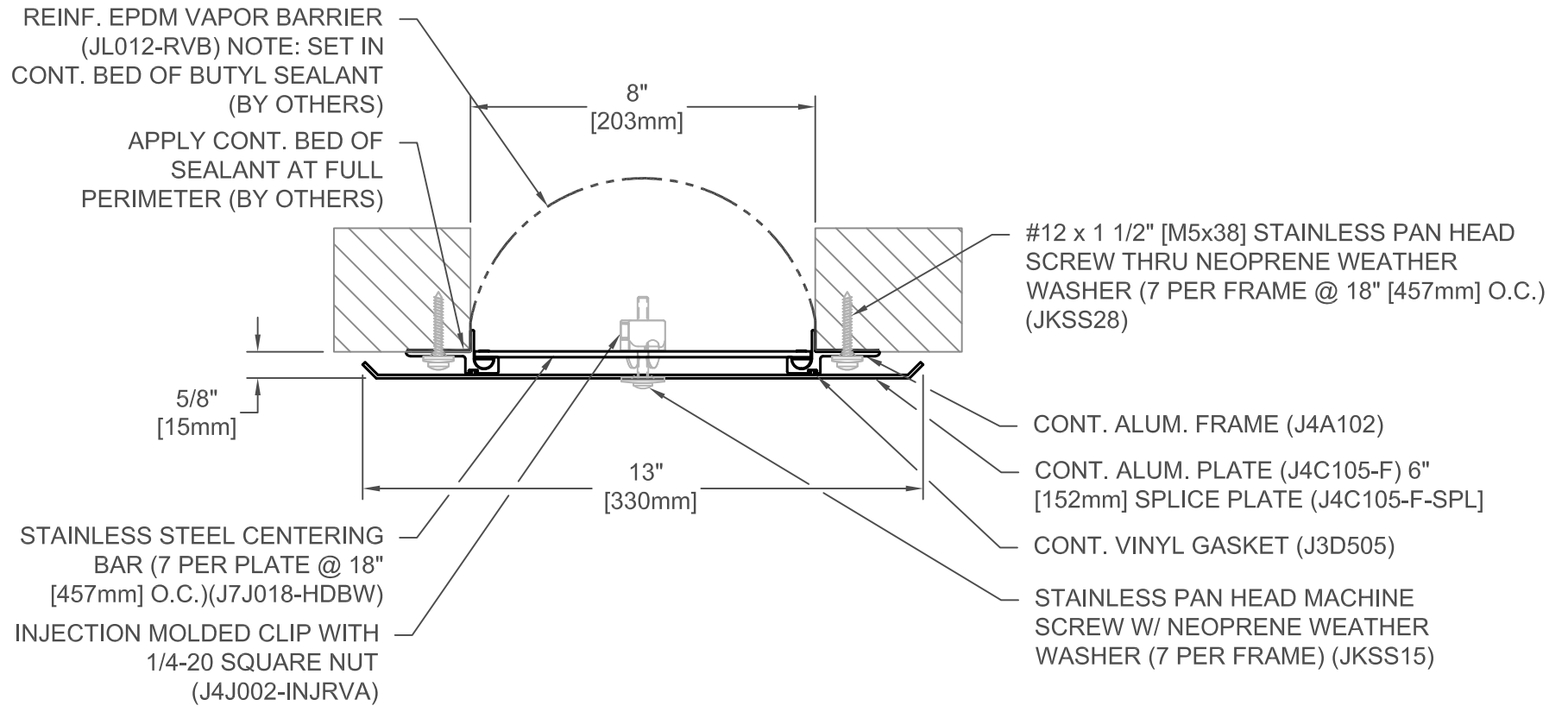
### 491E-A07-150

JOINT WIDTH		MOVEMENT ±			
		HORIZONTAL		VERTICAL	
US	mm	US	mm	US	mm
6"	152	3"	76	3"	76

FINISH: CLEAR ANODIZED
PROJECT:
CUSTOMER:
LOCATION:

APPLICATION-  
EXTERIOR CENTERING BAR SYSTEM  
SURFACE MOUNT FRAME WALL/WALL, CEILING/CEILING CONDITION

DATE:	10-5-21
SCALE:	1:2
DOC:	CADJM.242/R1



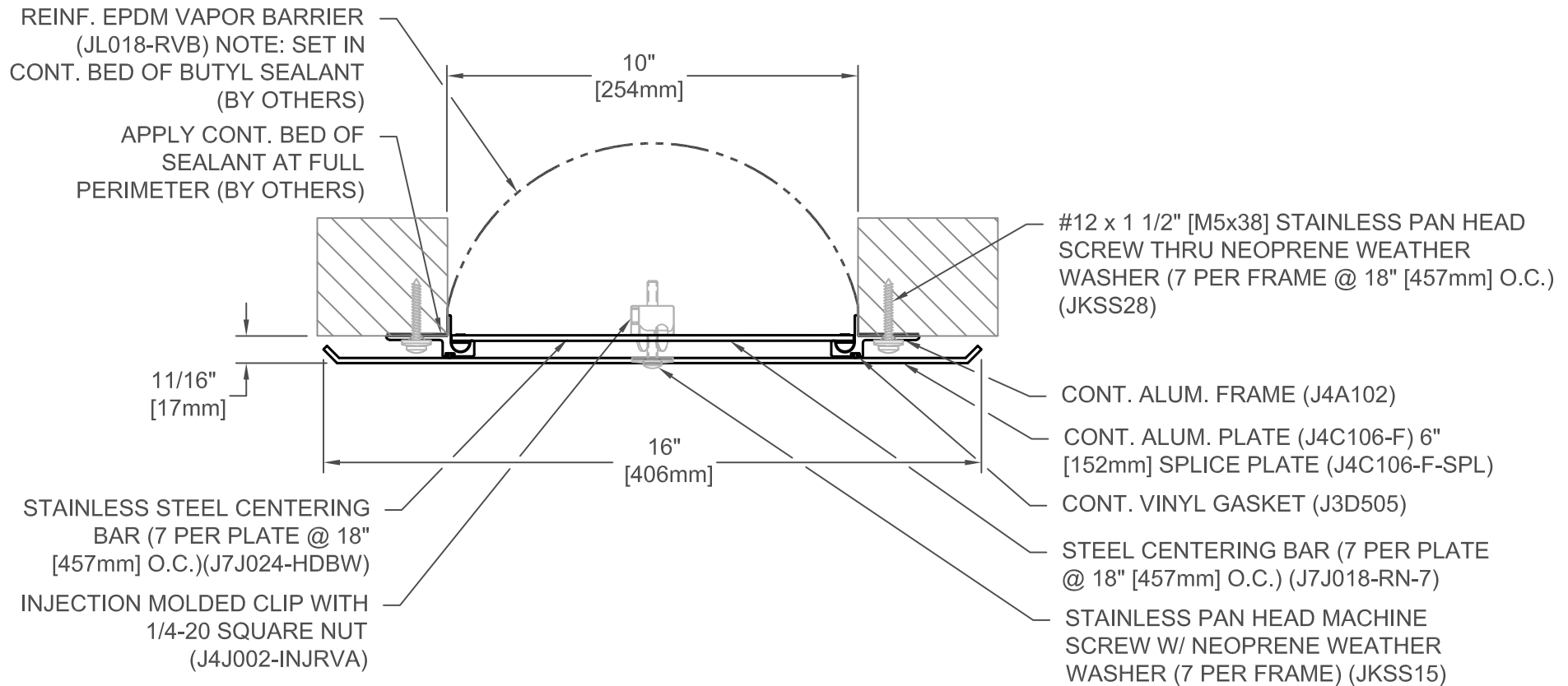
### 491E-A07-200

JOINT WIDTH		MOVEMENT ±			
		HORIZONTAL		VERTICAL	
US	mm	US	mm	US	mm
8"	203	4"	102	4"	102

FINISH: CLEAR ANODIZED
PROJECT:
CUSTOMER:
LOCATION:

APPLICATION-  
 EXTERIOR CENTERING BAR SYSTEM  
 SURFACE MOUNT FRAME WALL/WALL, CEILING/CEILING CONDITION

DATE:	10-5-21
SCALE:	1:4
DOC:	CADJM.242/R1



### 491E-A07-250

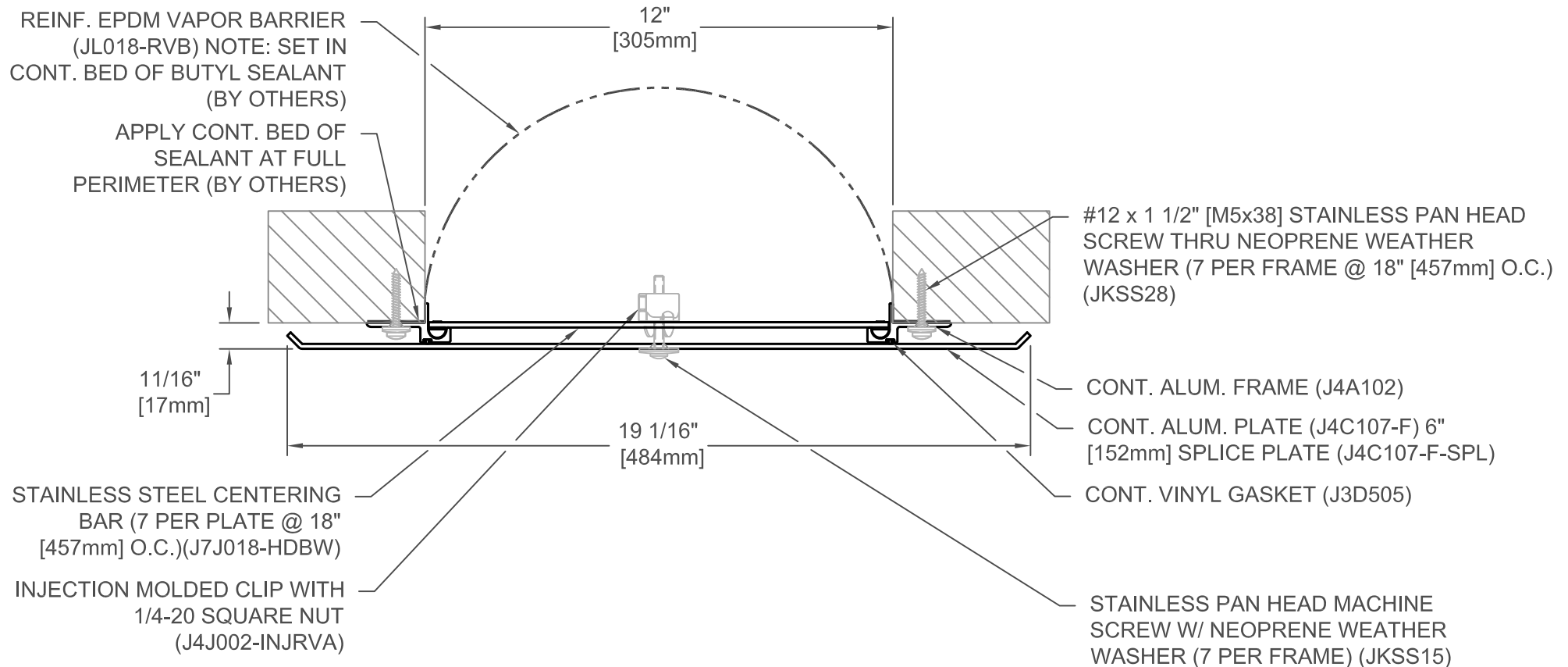
JOINT WIDTH		MOVEMENT ±			
		HORIZONTAL		VERTICAL	
US	mm	US	mm	US	mm
10"	254	5"	127	5"	127

FINISH: CLEAR ANODIZED
PROJECT:
CUSTOMER:
LOCATION:

APPLICATION-  
EXTERIOR CENTERING BAR SYSTEM  
SURFACE MOUNT FRAME WALL/WALL, CEILING/CEILING CONDITION

DATE:	10-5-21
SCALE:	1:4
DOC:	CADJM.242/R1





### 491E-A07-300

JOINT WIDTH		MOVEMENT ±			
		HORIZONTAL		VERTICAL	
US	mm	US	mm	US	mm
12"	305	6"	152	6"	152

FINISH: CLEAR ANODIZED
PROJECT:
CUSTOMER:
LOCATION:

APPLICATION-  
 EXTERIOR CENTERING BAR SYSTEM  
 SURFACE MOUNT FRAME WALL/WALL, CEILING/CEILING CONDITION

DATE:	10-5-21
SCALE:	1:4
DOC:	CADJM.242/R1