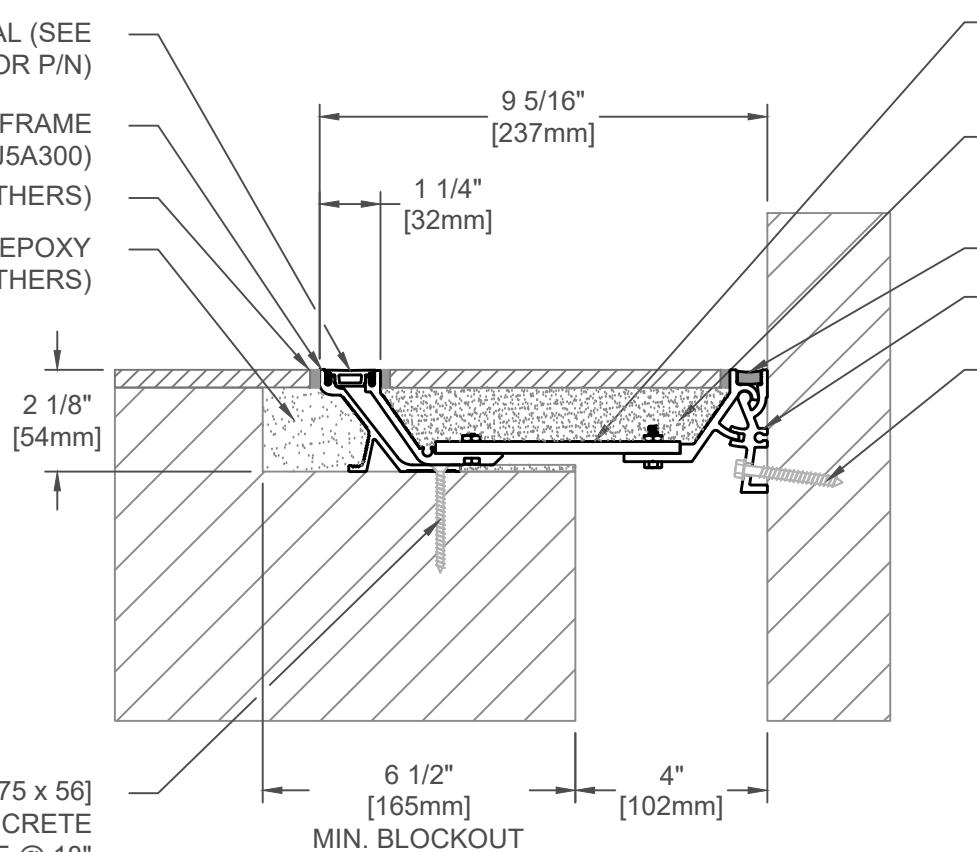


SANTOPRENE SEAL (SEE CHART FOR P/N)  
 CONT. ALUM. POP-UP FRAME (J5A300)  
 SEALANT (BY OTHERS)  
 HIGH STRENGTH EPOXY GROUT INFILL (BY OTHERS)



CONT. ALUM. POP-UP 3/8" [10mm] CENTER PAN (J5C129-AFW)  
 HIGH STRENGTH EPOXY GROUT PAN INFILL (BY OTHERS)  
 SEALANT (BY OTHERS)  
 CONT. ALUM. HINGE FRAME (J5A302)  
 1/4" x 2 1/4" [M6x1 x 56] HEX HEAD CONCRETE SCREWS (7 PER FRAME @ 18" [457mm] O.C.) (JK001)

3/16" x 2 1/4" [M4.5x.75 x 56] FLAT HEAD CONCRETE SCREW (7 PER FRAME @ 18" [457mm] O.C.) (JK002)

### 501-A02-100 M50

JOINT WIDTH		MOVEMENT ±			
		HORIZONTAL		VERTICAL	
US	mm	US	mm	US	mm
4"	102	2"	51	2 1/8"	54

NOTE:  
 TO DETERMINE BLOCKOUT DEPTH, DEDUCT THICKNESS OF FLOOR FINISH FROM FRAME HEIGHT.

SPECIFY SEAL COLOR:	
Black (J1D501)	<input type="checkbox"/>
Beige (J1D502)	<input type="checkbox"/>
Gray (J1D503)	<input type="checkbox"/>
Off White (J1D504)	<input type="checkbox"/>
Bright White (J1D505)	<input type="checkbox"/>
Greige (J1D506)	<input type="checkbox"/>

FINISH: MILL
PROJECT:
CUSTOMER:
LOCATION:

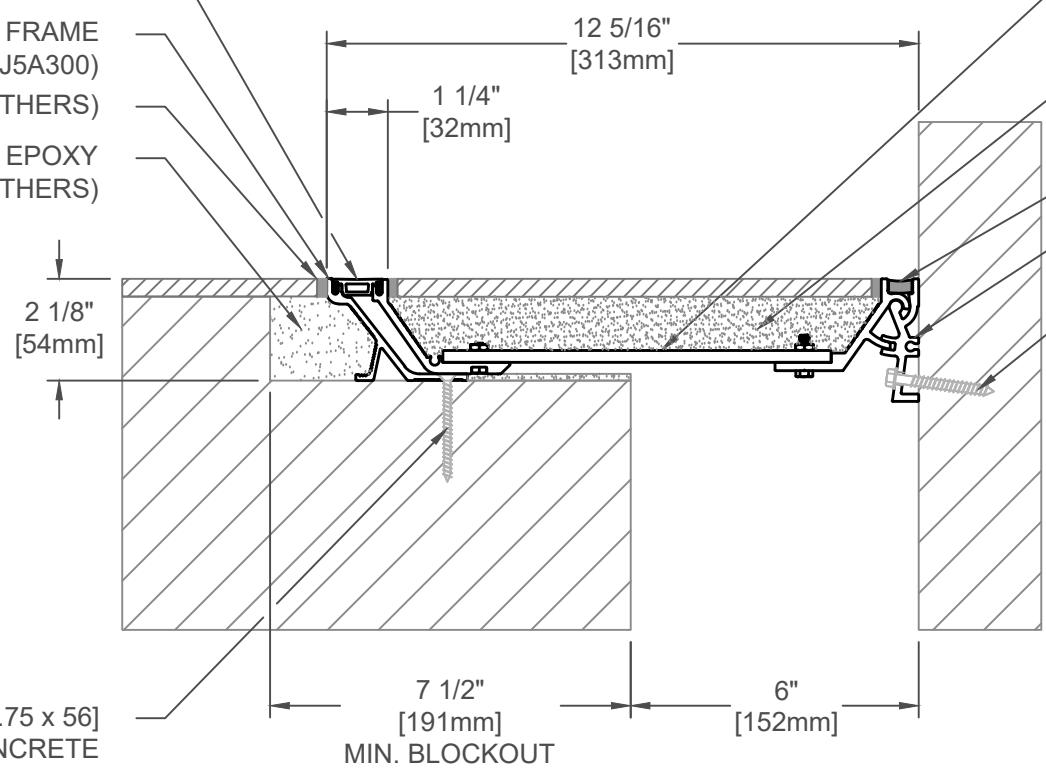
APPLICATION-  
 RECESSED FLOOR/WALL CONDITION

DATE:	7-13-22
SCALE:	1:4
DOC:	CADJM.244/R2



For More Information Visit: [Inprocorp.com](http://Inprocorp.com)

SANTOPRENE SEAL (SEE CHART FOR P/N)  
 CONT. ALUM. POP-UP FRAME (J5A300)  
 SEALANT (BY OTHERS)  
 HIGH STRENGTH EPOXY GROUT INFILL (BY OTHERS)



CONT. ALUM. POP-UP 3/8" [10mm] CENTER PAN (J5C206-AFW)  
 HIGH STRENGTH EPOXY GROUT PAN INFILL (BY OTHERS)  
 SEALANT (BY OTHERS)  
 CONT. ALUM. HINGE FRAME (J5A302)  
 1/4" x 2 1/4" [M6x1 x 56] HEX HEAD CONCRETE SCREWS (7 PER FRAME @ 18" [457mm] O.C.) (JK001)

3/16" x 2 1/4" [M4.5x.75 x 56] FLAT HEAD CONCRETE SCREW (7 PER FRAME @ 18" [457mm] O.C.) (JK002)

### 501-A02-150 M50

SPECIFY SEAL COLOR:	
Black (J1D501)	
Beige (J1D502)	
Gray (J1D503)	
Off White (J1D504)	
Bright White (J1D505)	
Greige (J1D506)	

JOINT WIDTH		MOVEMENT ±			
		HORIZONTAL		VERTICAL	
US	mm	US	mm	US	mm
6"	152	3"	76	2 1/8"	54

NOTE:  
 TO DETERMINE BLOCKOUT DEPTH, DEDUCT THICKNESS OF FLOOR FINISH FROM FRAME HEIGHT.

FINISH: MILL

PROJECT:

CUSTOMER:

LOCATION:

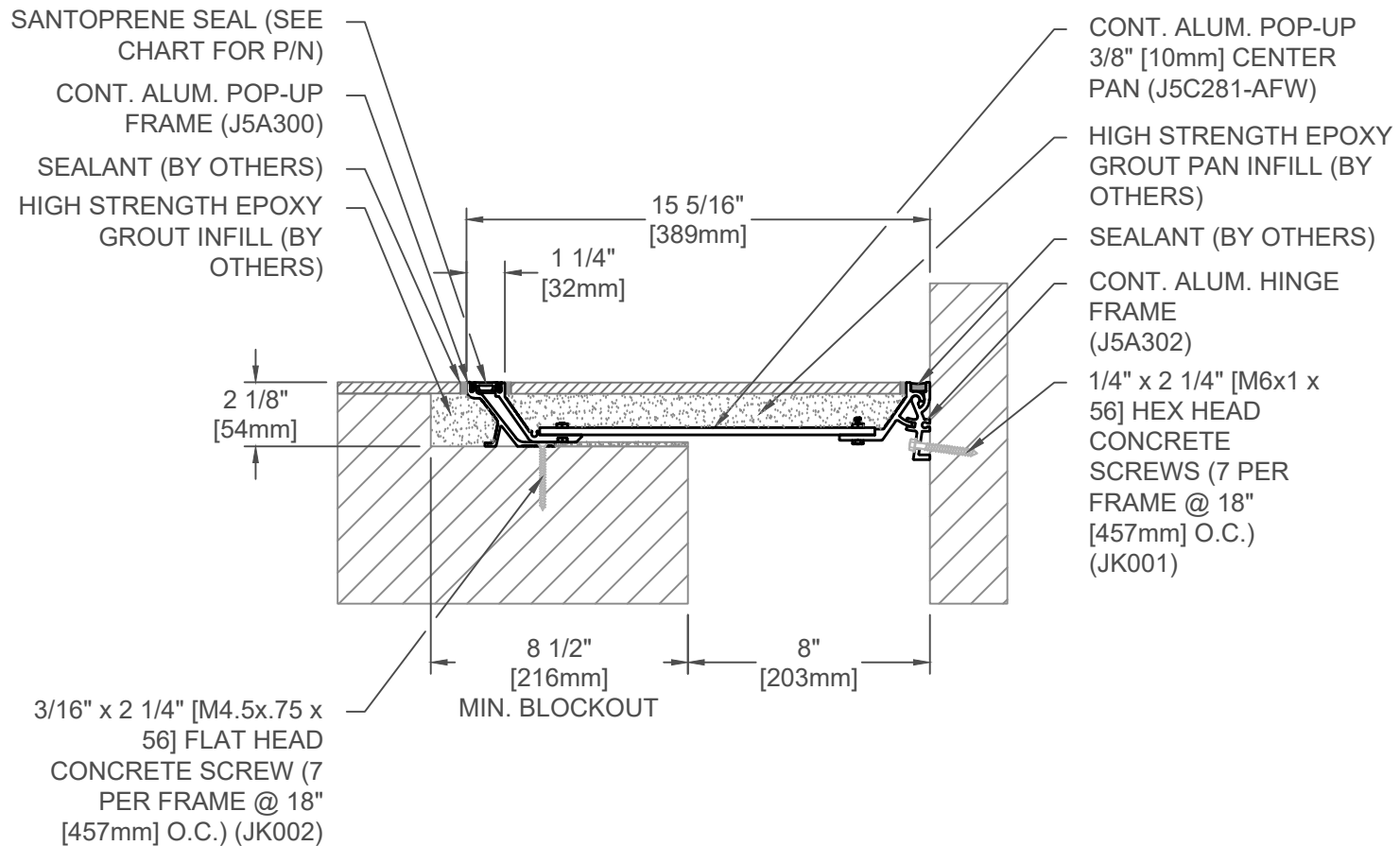
APPLICATION-  
 RECESSED FLOOR/WALL CONDITION

DATE: 7-13-22

SCALE: 1:4

DOC: CADJM.244/R2





3/16" x 2 1/4" [M4.5x.75 x 56] FLAT HEAD CONCRETE SCREW (7 PER FRAME @ 18" [457mm] O.C.) (JK002)

## 501-A02-200 M50

JOINT WIDTH		MOVEMENT ±			
		HORIZONTAL		VERTICAL	
US	mm	US	mm	US	mm
8"	203	4"	102	2 1/8"	54

NOTE:  
TO DETERMINE BLOCKOUT DEPTH,  
DEDUCT THICKNESS OF FLOOR  
FINISH FROM FRAME HEIGHT.

SPECIFY SEAL COLOR:	
Black (J1D501)	
Beige (J1D502)	
Gray (J1D503)	
Off White (J1D504)	
Bright White (J1D505)	
Greige (J1D506)	

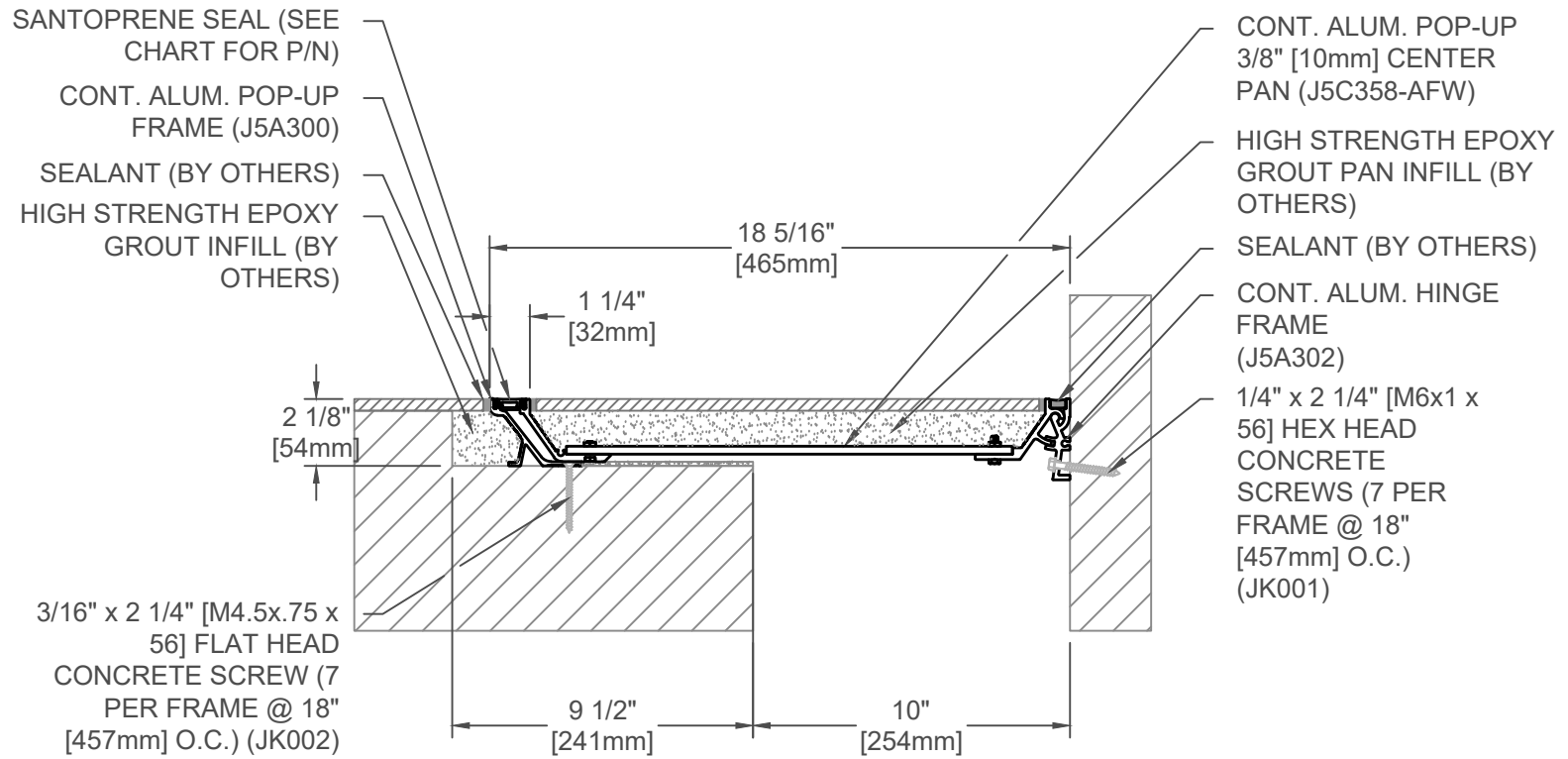
FINISH: MILL
PROJECT:
CUSTOMER:
LOCATION:

APPLICATION-  
RECESSED FLOOR/WALL CONDITION

DATE:	7-13-22
SCALE:	1:6
DOC:	CADJM.244/R2

**inpro.**

For More Information Visit: [Inprocorp.com](http://Inprocorp.com)



## 501-A02-250 M50

JOINT WIDTH		MOVEMENT ±			
		HORIZONTAL		VERTICAL	
US	mm	US	mm	US	mm
10"	255	5	127	2 1/8"	54

NOTE:  
 TO DETERMINE BLOCKOUT DEPTH,  
 DEDUCT THICKNESS OF FLOOR  
 FINISH FROM FRAME HEIGHT.

SPECIFY SEAL COLOR:	
Black (J1D501)	
Beige (J1D502)	
Gray (J1D503)	
Off White (J1D504)	
Bright White (J1D505)	
Greige (J1D506)	

FINISH: MILL
PROJECT:
CUSTOMER:
LOCATION:

APPLICATION-  
 RECESSED FLOOR/WALL CONDITION

DATE:	7-13-22
SCALE:	1:6
DOC:	CADJM.244/R2

For More Information Visit: [Inprocorp.com](http://Inprocorp.com)

SANTOPRENE SEAL (SEE CHART FOR P/N)

CONT. ALUM. POP-UP FRAME (J5A300)

SEALANT (BY OTHERS)

HIGH STRENGTH EPOXY GROUT INFILL (BY OTHERS)

2 1/8" [54mm]

1 1/4" [32mm]

21 5/16" [541mm]

10 1/2" [267mm]

12" [305mm]

3/16" x 2 1/4" [M4.5x.75 x 56] FLAT HEAD CONCRETE SCREW (7 PER FRAME @ 18" [457mm] O.C.) (JK002)

CONT. ALUM. POP-UP 3/8" [10mm] CENTER PAN (J5C433-AFW)

HIGH STRENGTH EPOXY GROUT PAN INFILL (BY OTHERS)

SEALANT (BY OTHERS)

CONT. ALUM. HINGE FRAME (J5A302)

1/4" x 2 1/4" [M6x1 x 56] HEX HEAD CONCRETE SCREWS (7 PER FRAME @ 18" [457mm] O.C.) (JK001)

## 501-A02-300 M50

SPECIFY SEAL COLOR:	
Black (J1D501)	
Beige (J1D502)	
Gray (J1D503)	
Off White (J1D504)	
Bright White (J1D505)	
Greige (J1D506)	

JOINT WIDTH		MOVEMENT ±			
		HORIZONTAL		VERTICAL	
US	mm	US	mm	US	mm
12"	300	6"	152	2 1/8"	54

NOTE:  
TO DETERMINE BLOCKOUT DEPTH, DEDUCT THICKNESS OF FLOOR FINISH FROM FRAME HEIGHT.

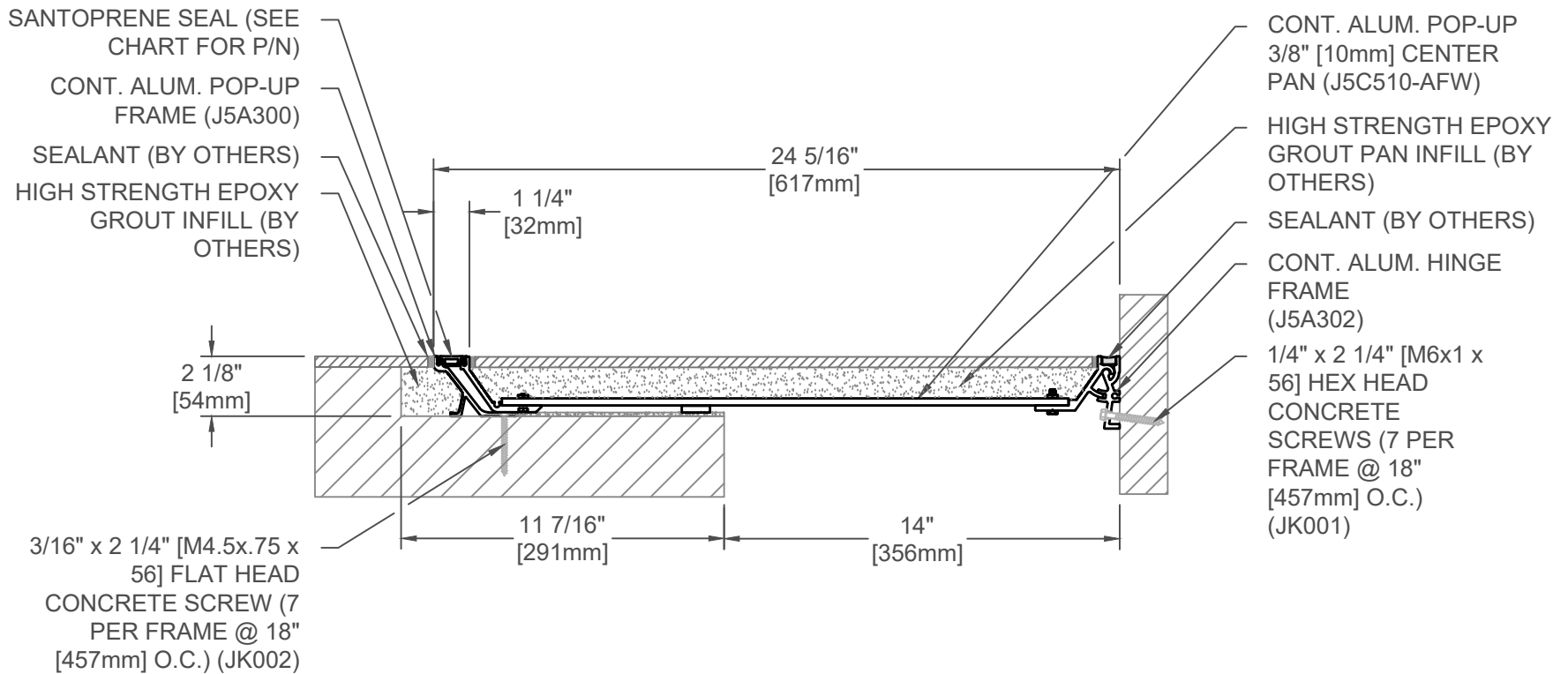
FINISH: MILL
PROJECT:
CUSTOMER:
LOCATION:

APPLICATION-  
RECESSED FLOOR/WALL  
CONDITION

DATE:	7-13-22
SCALE:	1:4
DOC:	CADJM.244/R2

**inpro.**

For More Information Visit: [Inprocorp.com](http://Inprocorp.com)



SPECIFY SEAL COLOR:	
Black (J1D501)	
Beige (J1D502)	
Gray (J1D503)	
Off White (J1D504)	
Bright White (J1D505)	
Greige (J1D506)	

## 501-A02-350 M50

JOINT WIDTH		MOVEMENT ±			
		HORIZONTAL		VERTICAL	
US	mm	US	mm	US	mm
14"	356	7"	178	2 1/8"	54

NOTE:  
TO DETERMINE BLOCKOUT DEPTH,  
DEDUCT THICKNESS OF FLOOR  
FINISH FROM FRAME HEIGHT.

FINISH: MILL
PROJECT:
CUSTOMER:
LOCATION:

APPLICATION-  
RECESSED FLOOR/WALL  
CONDITION

DATE:	7-13-22
SCALE:	1:6
DOC:	CADJM.244/R2

**inpro.**

For More Information Visit: [Inprocorp.com](http://Inprocorp.com)

SANTOPRENE SEAL (SEE CHART FOR P/N)

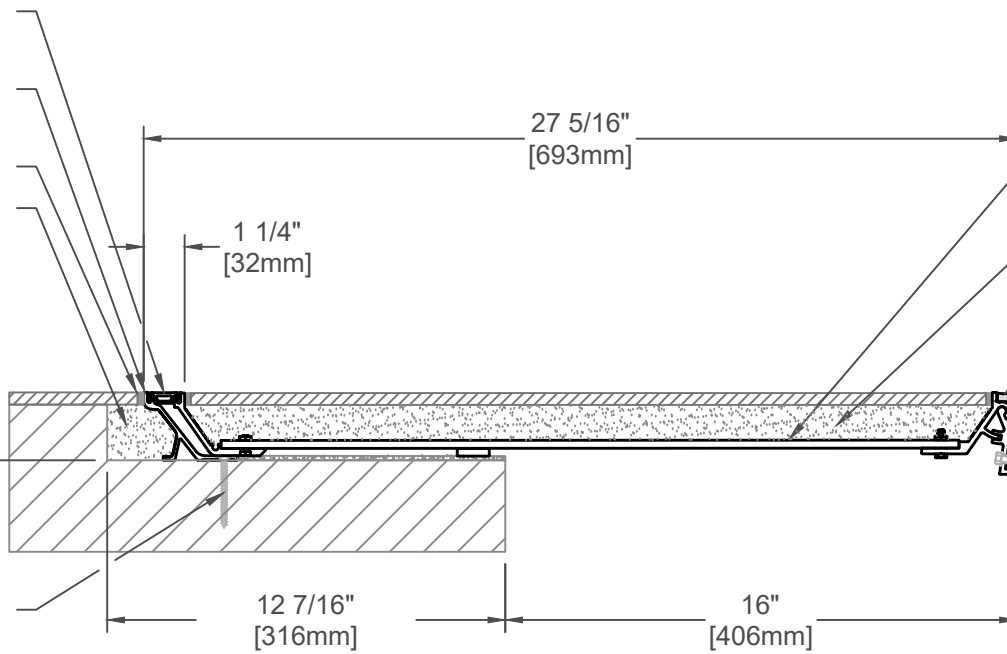
CONT. ALUM. POP-UP FRAME (J5A300)

SEALANT (BY OTHERS)

HIGH STRENGTH EPOXY GROUT INFILL (BY OTHERS)

2 1/8" [54mm]

3/16" x 2 1/4" [M4.5x.75 x 56] FLAT HEAD CONCRETE SCREW (7 PER FRAME @ 18" [457mm] O.C.) (JK002)



CONT. ALUM. POP-UP 3/8" [10mm] CENTER PAN (J5C586-AFW)

HIGH STRENGTH EPOXY GROUT PAN INFILL (BY OTHERS)

SEALANT (BY OTHERS)

CONT. ALUM. HINGE FRAME (J5A302)

1/4" x 2 1/4" [M6x1 x 56] HEX HEAD CONCRETE SCREWS (7 PER FRAME @ 18" [457mm] O.C.) (JK001)

12 7/16" [316mm] MIN. BLOCKOUT

16" [406mm]

27 5/16" [693mm]

1 1/4" [32mm]

SPECIFY SEAL COLOR:	
Black (J1D501)	
Beige (J1D502)	
Gray (J1D503)	
Off White (J1D504)	
Bright White (J1D505)	
Greige (J1D506)	

## 501-A02-400 M50

JOINT WIDTH		MOVEMENT ±			
		HORIZONTAL		VERTICAL	
US	mm	US	mm	US	mm
16"	400	8"	203	2 1/8"	54

NOTE:  
TO DETERMINE BLOCKOUT DEPTH, DEDUCT THICKNESS OF FLOOR FINISH FROM FRAME HEIGHT.

FINISH: MILL
PROJECT:
CUSTOMER:
LOCATION:

APPLICATION-  
RECESSED FLOOR/WALL CONDITION

DATE:	7-13-22
SCALE:	1:6
DOC:	CADJM.244/R2



For More Information Visit: [Inprocorp.com](http://Inprocorp.com)

SANTOPRENE SEAL (SEE CHART FOR P/N)

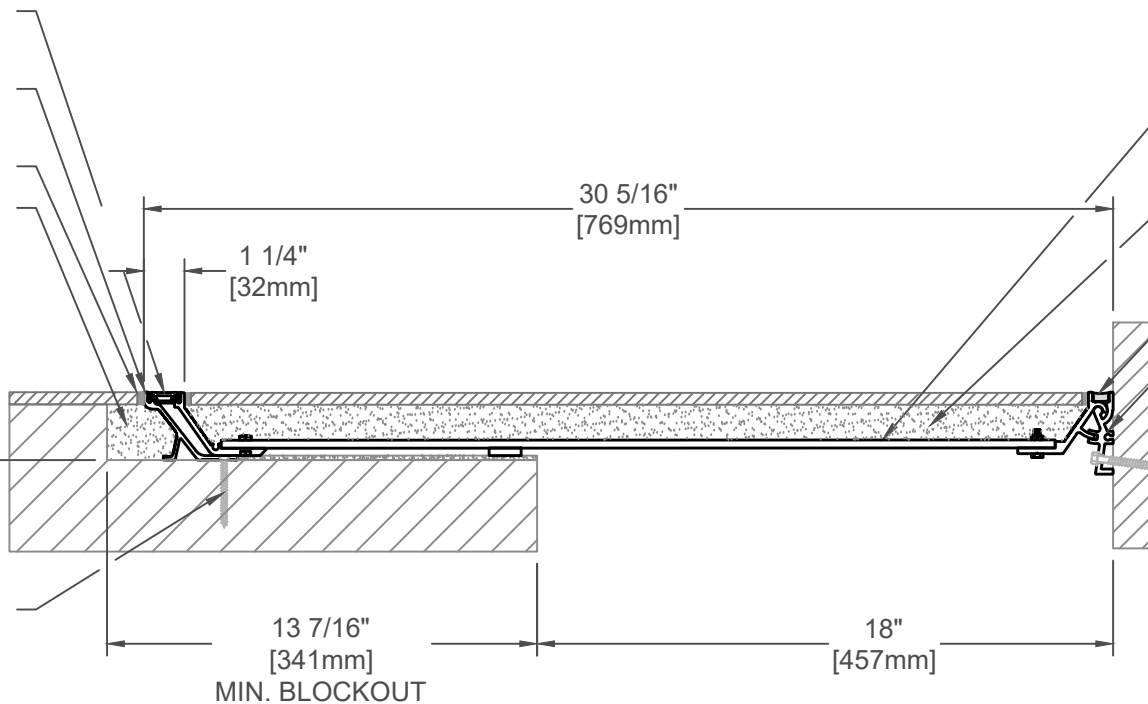
CONT. ALUM. POP-UP FRAME (J5A300)

SEALANT (BY OTHERS)

HIGH STRENGTH EPOXY GROUT INFILL (BY OTHERS)

2 1/8" [54mm]

3/16" x 2 1/4" [M4.5x.75 x 56] FLAT HEAD CONCRETE SCREW (7 PER FRAME @ 18" [457mm] O.C.) (JK002)



CONT. ALUM. POP-UP 3/8" [10mm] CENTER PAN (J5C662-AFW)

HIGH STRENGTH EPOXY GROUT PAN INFILL (BY OTHERS)

SEALANT (BY OTHERS)

CONT. ALUM. HINGE FRAME (J5A302)

1/4" x 2 1/4" [M6x1 x 56] HEX HEAD CONCRETE SCREWS (7 PER FRAME @ 18" [457mm] O.C.) (JK001)

13 7/16" [341mm] MIN. BLOCKOUT

18" [457mm]

## 501-A02-450 M50

JOINT WIDTH		MOVEMENT ±			
		HORIZONTAL		VERTICAL	
US	mm	US	mm	US	mm
18"	457	9"	229	2 1/8"	54

NOTE:  
TO DETERMINE BLOCKOUT DEPTH,  
DEDUCT THICKNESS OF FLOOR  
FINISH FROM FRAME HEIGHT.

SPECIFY SEAL COLOR:	
Black (J1D501)	
Beige (J1D502)	
Gray (J1D503)	
Off White (J1D504)	
Bright White (J1D505)	
Greige (J1D506)	

FINISH: MILL
PROJECT:
CUSTOMER:
LOCATION:

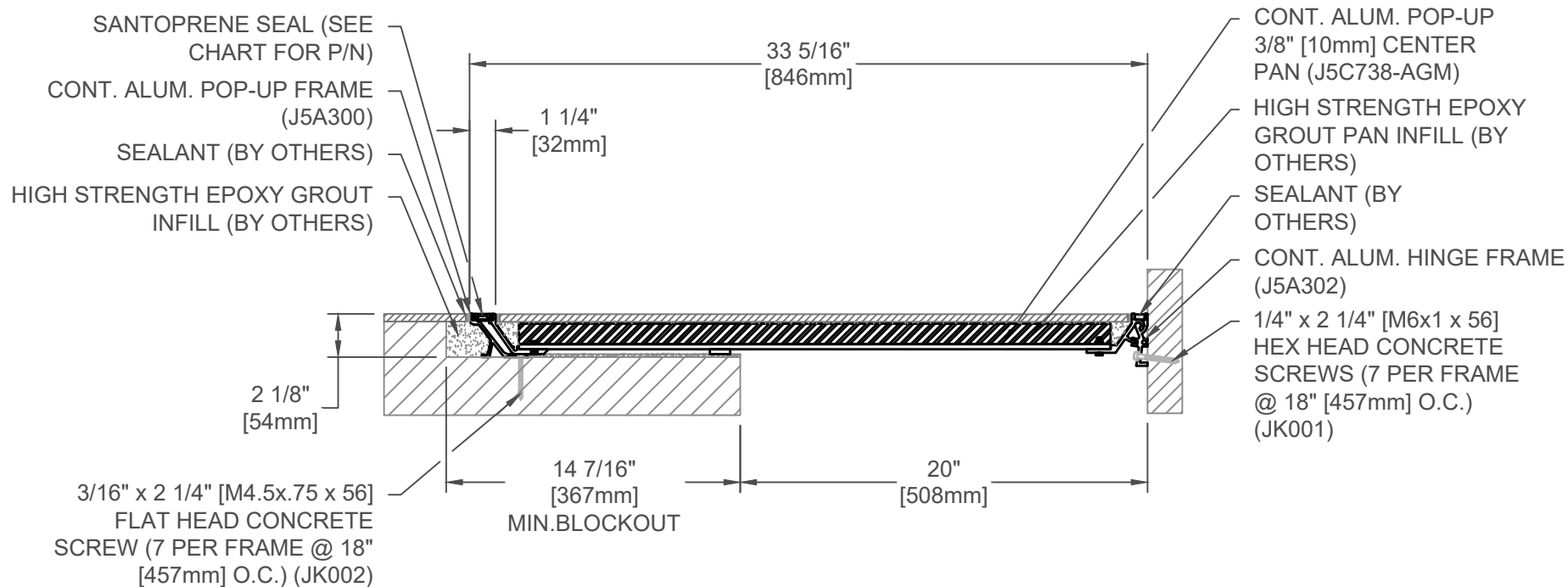
APPLICATION-  
RECESSED FLOOR/WALL CONDITION

DATE: 7-13-22  
SCALE: 1:6  
DOC: CADJM.244/R2

**inpro.**

For More Information Visit: [Inprocorp.com](http://Inprocorp.com)





SPECIFY SEAL COLOR:	
Black (J1D501)	
Beige (J1D502)	
Gray (J1D503)	
Off White (J1D504)	
Bright White (J1D505)	
Greige (J1D506)	

## 501-A02-500 M50

JOINT WIDTH		MOVEMENT ±			
		HORIZONTAL		VERTICAL	
US	mm	US	mm	US	mm
20"	508	10"	254	2 1/8"	54

NOTE:  
TO DETERMINE BLOCKOUT DEPTH,  
DEDUCT THICKNESS OF FLOOR  
FINISH FROM FRAME HEIGHT.

FINISH: MILL
PROJECT:
CUSTOMER:
LOCATION:

APPLICATION-  
RECESSED FLOOR/WALL CONDITION

DATE:	7-13-22
SCALE:	1:8
DOC:	CADJM.244/R1

**inpro.**

For More Information Visit: [Inprocorp.com](http://Inprocorp.com)

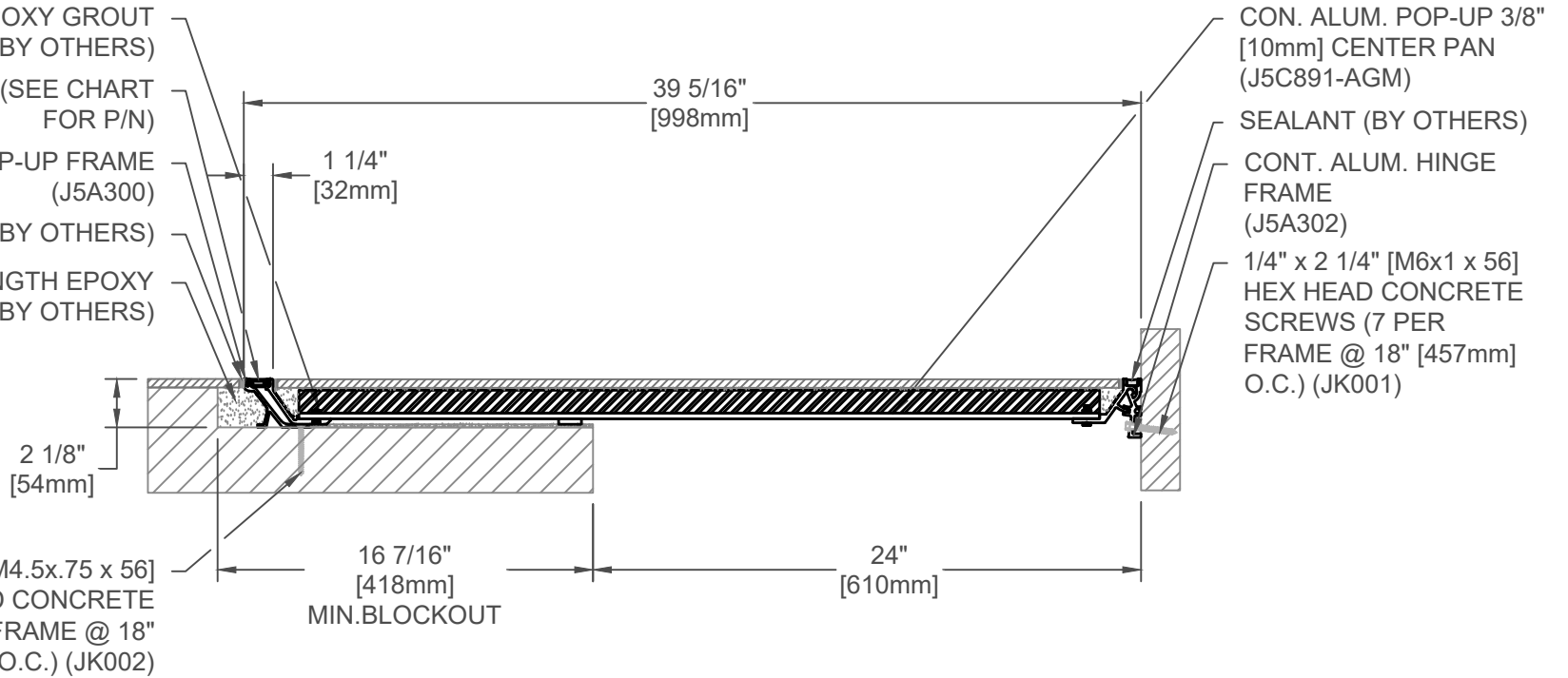
HIGH STRENGTH EPOXY GROUT  
PAN INFILL (BY OTHERS)

SANTOPRENE SEAL (SEE CHART  
FOR P/N)

CONT. ALUM. POP-UP FRAME  
(J5A300)

SEALANT (BY OTHERS)

HIGH STRENGTH EPOXY  
GROUT INFILL (BY OTHERS)



CON. ALUM. POP-UP 3/8"  
[10mm] CENTER PAN  
(J5C891-AGM)

SEALANT (BY OTHERS)

CONT. ALUM. HINGE  
FRAME  
(J5A302)

1/4" x 2 1/4" [M6x1 x 56]  
HEX HEAD CONCRETE  
SCREWS (7 PER  
FRAME @ 18" [457mm]  
O.C.) (JK001)

3/16" x 2 1/4" [M4.5x.75 x 56]  
FLAT HEAD CONCRETE  
SCREW (7 PER FRAME @ 18"  
[457mm] O.C.) (JK002)

2 1/8"  
[54mm]

16 7/16"  
[418mm]  
MIN.BLOCKOUT

24"  
[610mm]

39 5/16"  
[998mm]

1 1/4"  
[32mm]

SPECIFY SEAL COLOR:	
Black (J1D501)	
Beige (J1D502)	
Gray (J1D503)	
Off White (J1D504)	
Bright White (J1D505)	
Greige (J1D506)	

## 501-A02-600 M50

JOINT WIDTH		MOVEMENT ±			
		HORIZONTAL		VERTICAL	
US	mm	US	mm	US	mm
24"	610	12"	305	2 1/8"	54

NOTE:  
TO DETERMINE BLOCKOUT DEPTH,  
DEDUCT THICKNESS OF FLOOR  
FINISH FROM FRAME HEIGHT.

FINISH: MILL
PROJECT:
CUSTOMER:
LOCATION:

APPLICATION-  
RECESSED FLOOR/WALL CONDITION

DATE:	7-13-22
SCALE:	1:8
DOC:	CADJM.244/R2

**inpro.**  
For More Information Visit: [Inprocorp.com](http://Inprocorp.com)