

### 502-A01-050

JOINT WIDTH		MOVEMENT ±			
		HORIZONTAL		VERTICAL	
US	mm	US	mm	US	mm
2"	51	1"	25	1"	25

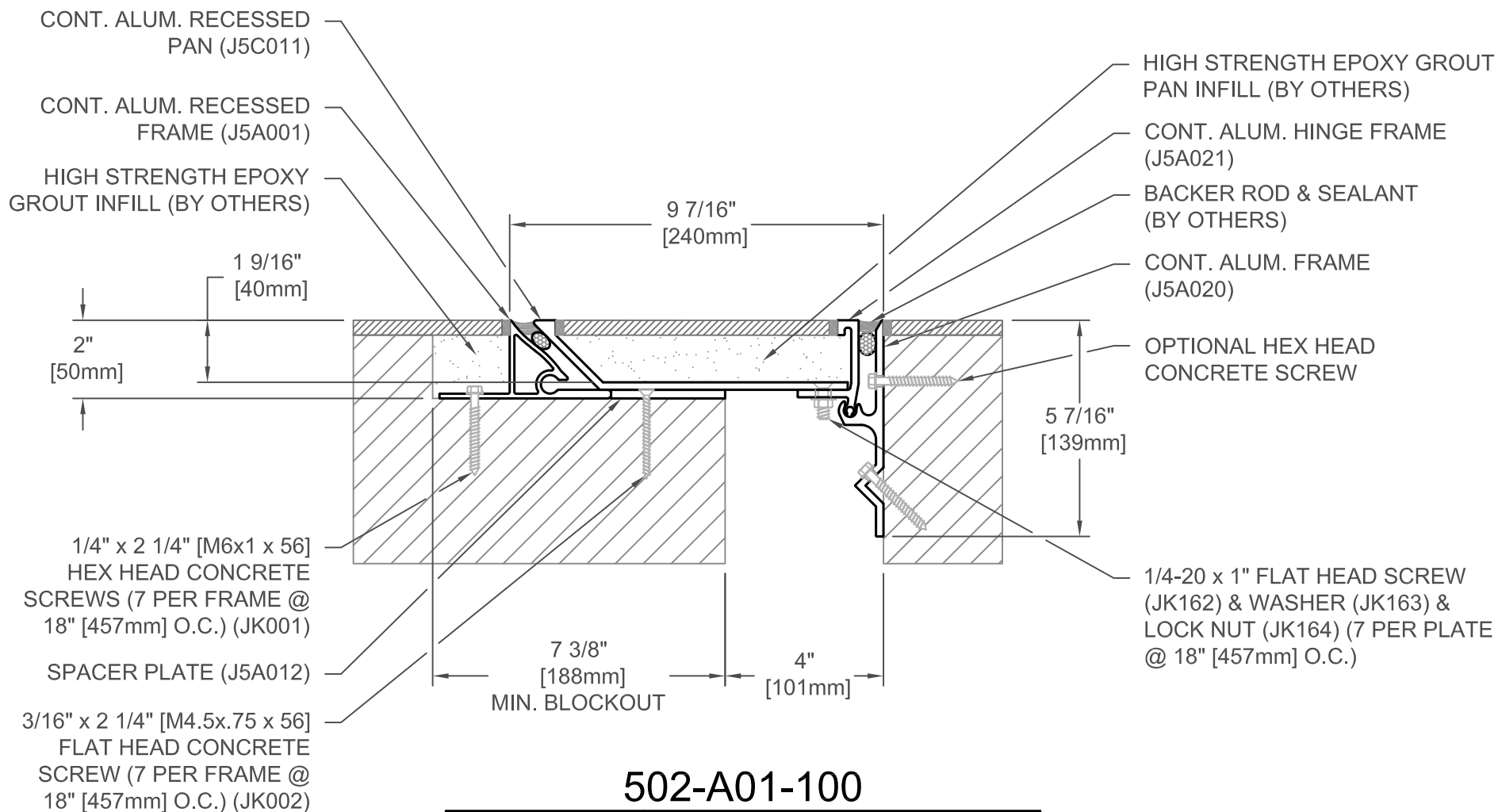
FINISH: MILL
PROJECT:
CUSTOMER:
LOCATION:

APPLICATION-  
POP-UP SYSTEM  
FLOOR/FLOOR, FLOOR/WALL CONDITION

DATE:	2-13-12
SCALE:	1:4
DOC:	CADJM.133/R4



For More Information Visit: [Inprocorp.com](http://Inprocorp.com)



### 502-A01-100

JOINT WIDTH		MOVEMENT ±			
		HORIZONTAL		VERTICAL	
US	mm	US	mm	US	mm
4"	102	2"	51	2"	51

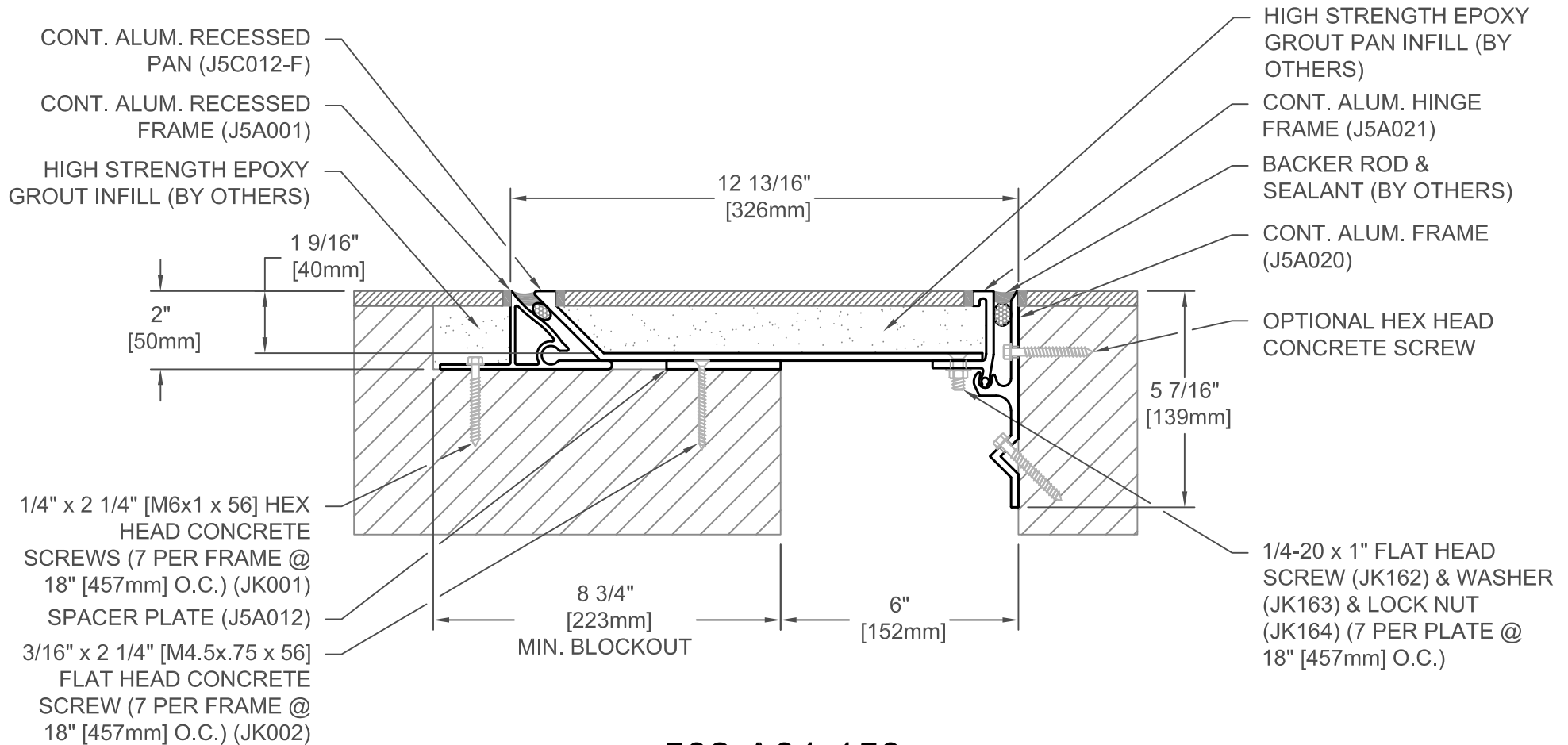
FINISH: MILL
PROJECT:
CUSTOMER:
LOCATION:

APPLICATION-  
POP-UP SYSTEM  
FLOOR/FLOOR, FLOOR/WALL CONDITION

DATE:	2-13-12
SCALE:	1:4
DOC:	CADJM.133/R4



For More Information Visit: [Inprocorp.com](http://Inprocorp.com)



### 502-A01-150

JOINT WIDTH		MOVEMENT ±			
		HORIZONTAL		VERTICAL	
US	mm	US	mm	US	mm
6"	152	3"	76	3"	76

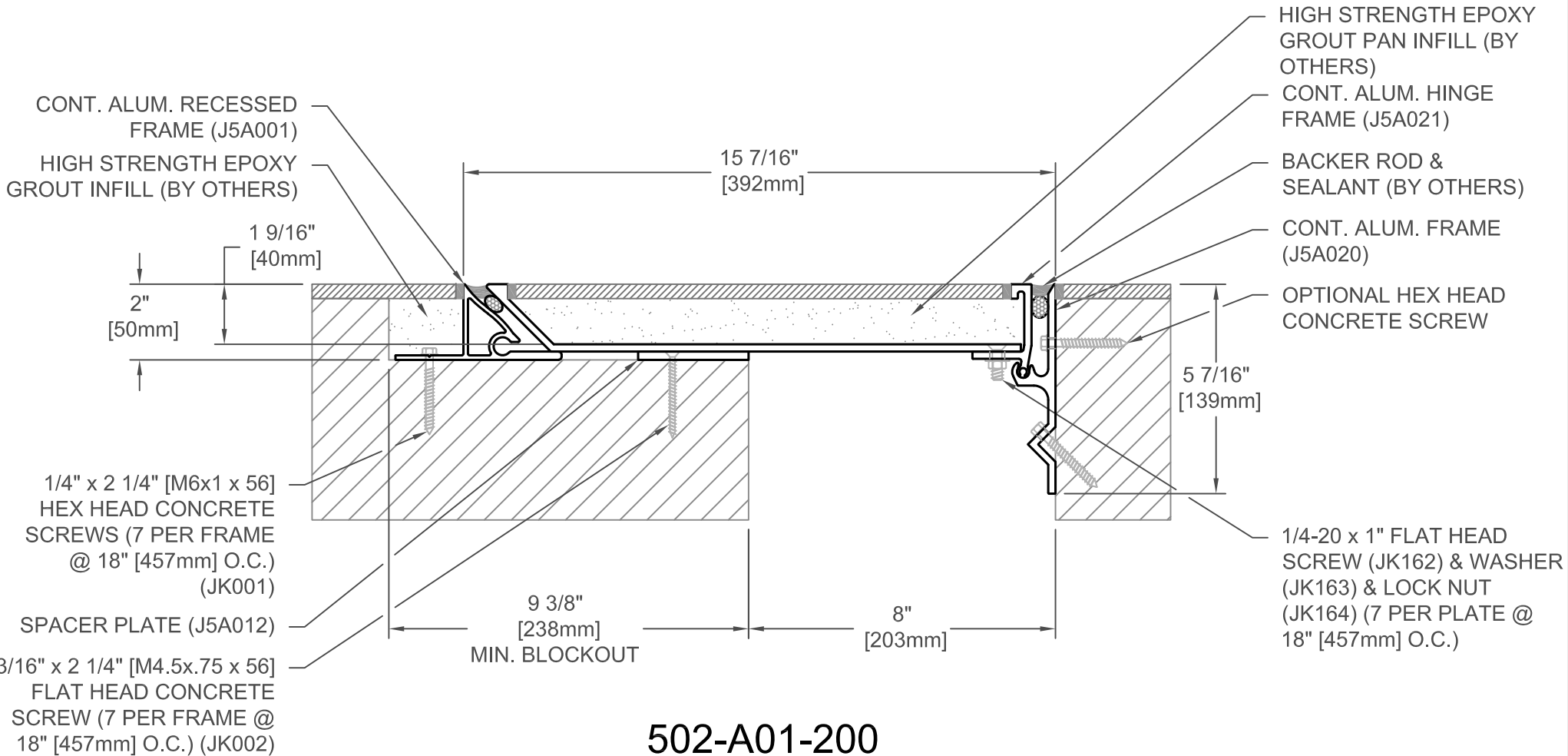
FINISH: MILL
PROJECT:
CUSTOMER:
LOCATION:

APPLICATION-  
POP-UP SYSTEM  
FLOOR/FLOOR, FLOOR/WALL CONDITION

DATE: 2-13-12  
SCALE: 1:4  
DOC: CADJM.133/R4



For More Information Visit: [Inprocorp.com](http://Inprocorp.com)



### 502-A01-200

JOINT WIDTH		MOVEMENT ±			
		HORIZONTAL		VERTICAL	
US	mm	US	mm	US	mm
8"	203	4"	102	4"	51

FINISH: MILL
PROJECT:
CUSTOMER:
LOCATION:

APPLICATION-  
POP-UP SYSTEM  
FLOOR/FLOOR, FLOOR/WALL CONDITION

DATE:	2-13-12
SCALE:	1:4
DOC:	CADJM.133/R4