

### 502-A02-050

JOINT WIDTH		MOVEMENT ±			
		HORIZONTAL		VERTICAL	
US	mm	US	mm	US	mm
2"	51	1"	25	1"	25

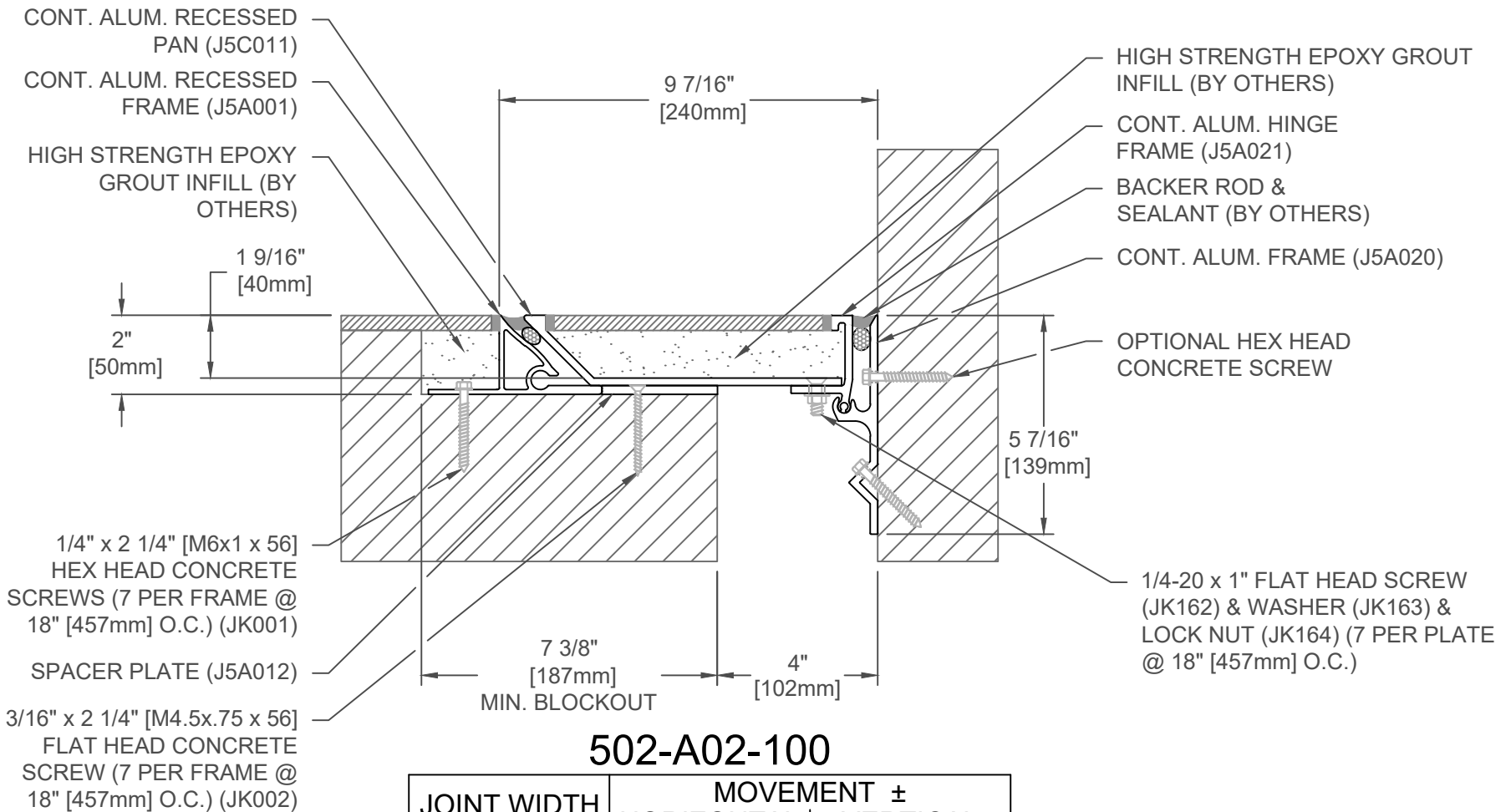
FINISH: MILL
PROJECT:
CUSTOMER:
LOCATION:

APPLICATION-  
POP-UP SYSTEM  
FLOOR/FLOOR, FLOOR/WALL CONDITION

DATE:	2-13-12
SCALE:	1:4
DOC:	CADJM.134/R3

**inpro.**

For More Information Visit: [Inprocorp.com](http://Inprocorp.com)



### 502-A02-100

JOINT WIDTH		MOVEMENT ±			
		HORIZONTAL		VERTICAL	
US	mm	US	mm	US	mm
4"	102	2"	51	2"	51

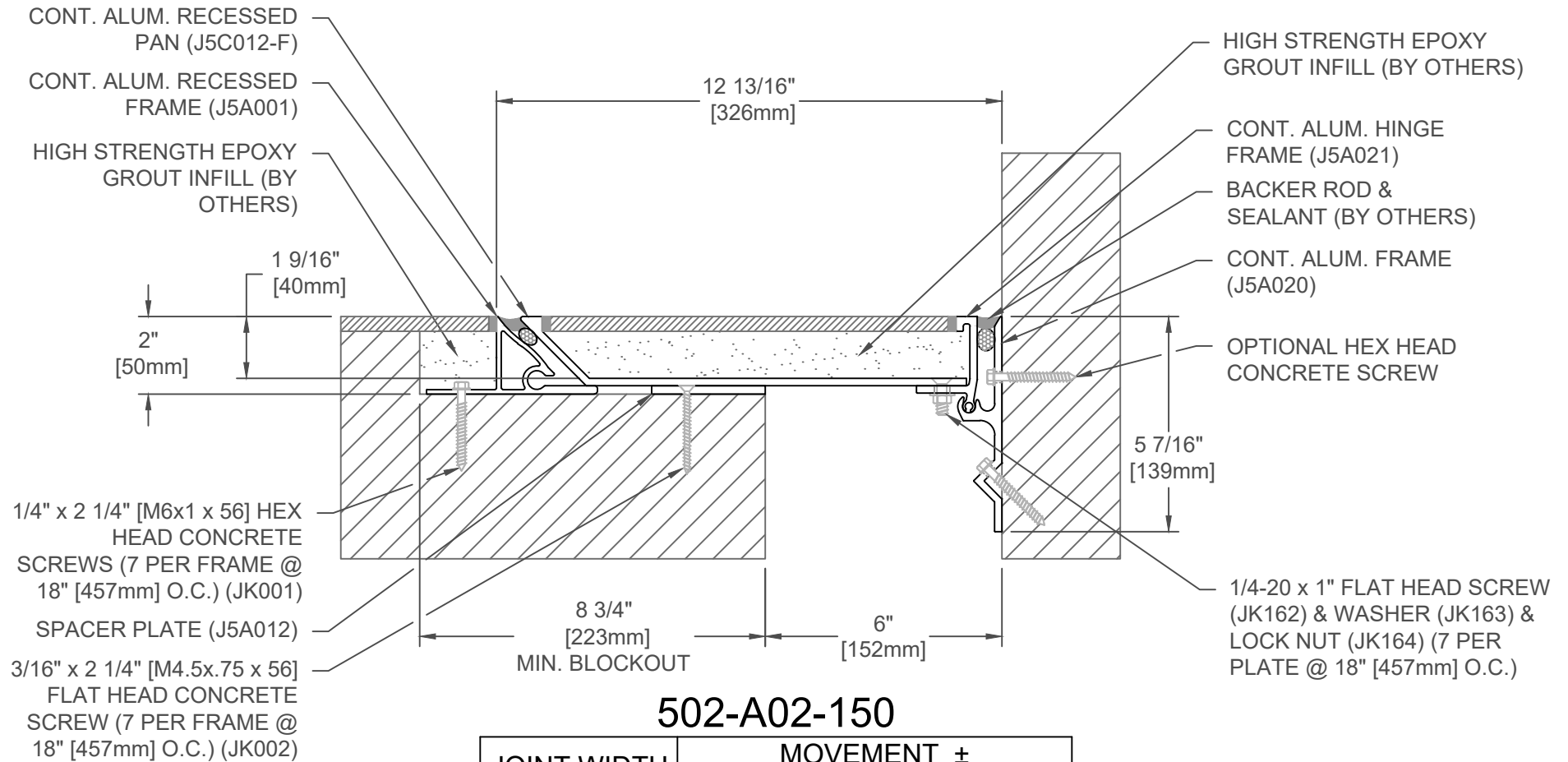
FINISH: MILL
PROJECT:
CUSTOMER:
LOCATION:

APPLICATION-  
POP-UP SYSTEM  
FLOOR/FLOOR, FLOOR/WALL CONDITION

DATE: 2-13-12  
SCALE: 1:4  
DOC: CADJM.134/R3



For More Information Visit: [Inprocorp.com](http://Inprocorp.com)



### 502-A02-150

JOINT WIDTH		MOVEMENT ±			
		HORIZONTAL		VERTICAL	
US	mm	US	mm	US	mm
6"	152	3"	76	3"	76

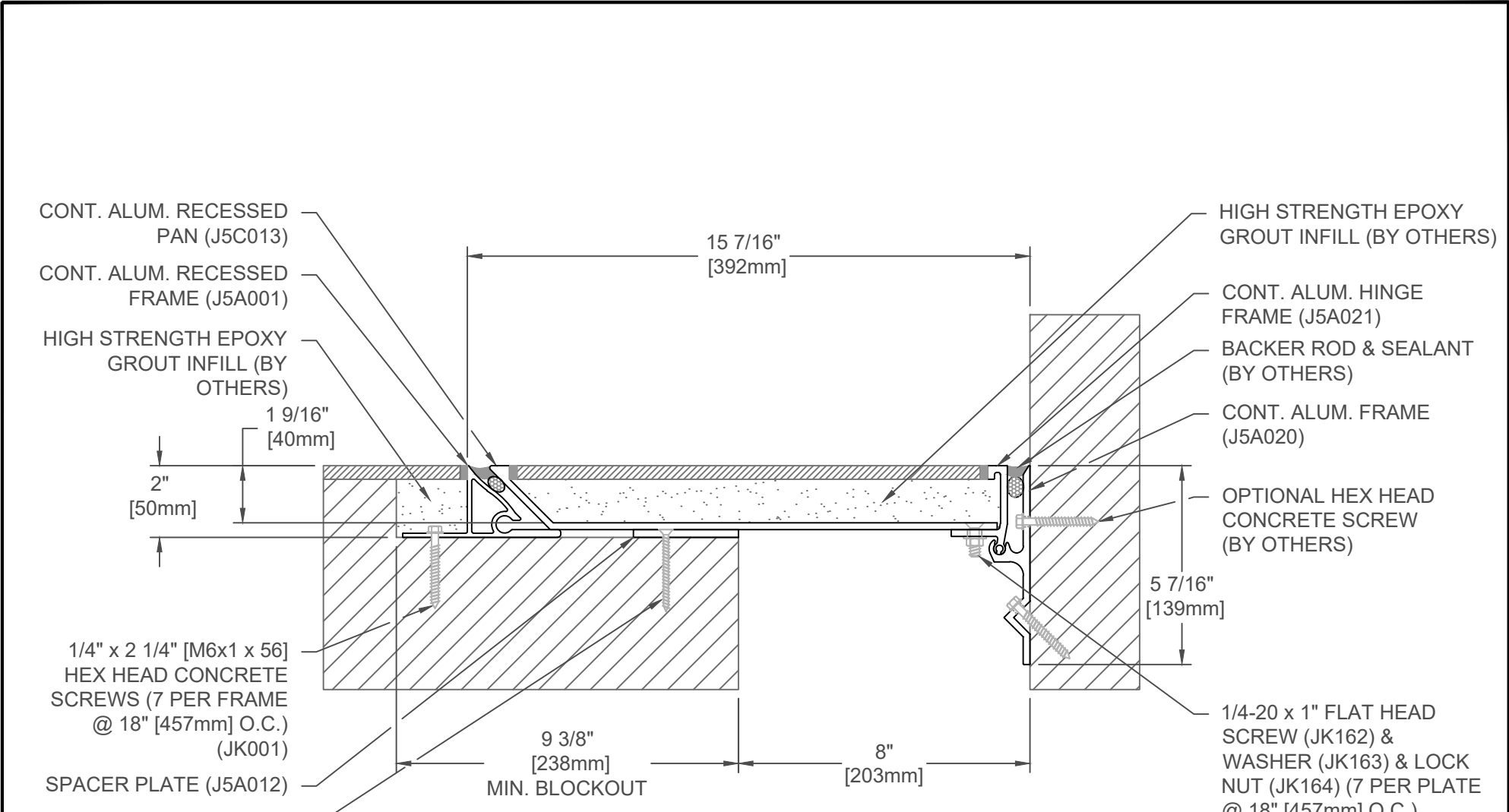
FINISH: MILL
PROJECT:
CUSTOMER:
LOCATION:

APPLICATION-  
POP-UP SYSTEM  
FLOOR/FLOOR, FLOOR/WALL CONDITION

DATE:	2-13-12
SCALE:	1:4
DOC:	CADJM.134/R3

**inpro.**

For More Information Visit: [Inprocorp.com](http://Inprocorp.com)



**502-A02-200**

JOINT WIDTH		MOVEMENT ±			
		HORIZONTAL		VERTICAL	
US	mm	US	mm	US	mm
8"	203	4"	102	4"	102

FINISH: MILL
PROJECT:
CUSTOMER:
LOCATION:

APPLICATION-  
POP-UP SYSTEM  
FLOOR/FLOOR, FLOOR/WALL CONDITION

DATE:	2-13-12
SCALE:	1:4
DOC:	CADJM.134/R3

**inpro.**  
For More Information Visit: [Inprocorp.com](http://Inprocorp.com)