

650C-A01-150

SPECIFY PANEL COLOR:	
CLEAR ANO. (MNC)	ALUM. GRAY (AGT)
BONE WHITE (BNT)	DEEP GRAY (BGY)
OYSTER (CRT)	CHARCOAL (CNC)
BRONZE (JBR)	BLACK (BLK)

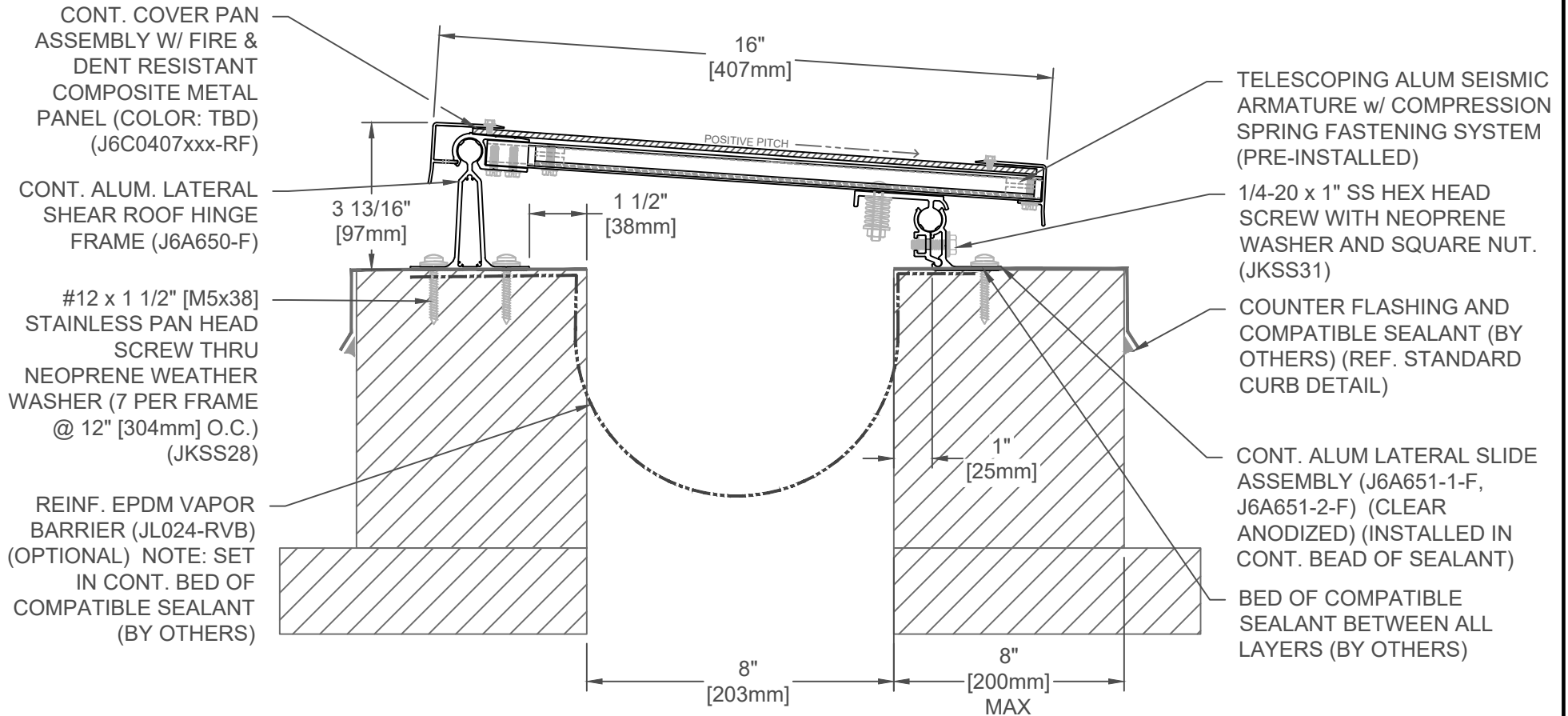
JOINT WIDTH		MOVEMENT			
		MINIMUM		MAXIMUM	
US	mm	US	mm	US	mm
6"	152	2 3/4"	70	12"	305

FINISH: CLEAR ANODIZED - ALUM
PROJECT:
CUSTOMER:
LOCATION:

APPLICATION - EXTERIOR
 ROOF/ROOF CONCEALED PAN EXPANSION JOINT SYSTEM -

DATE:	9/4/18
SCALE:	1:4
DOC:	CADJM.248/R1

inpro.
 For More Information Visit: Inprocorp.com



650C-A01-200

SPECIFY PANEL COLOR:		
CLEAR ANO. (MNC)		ALUM. GRAY (AGT)
BONE WHITE (BNT)		DEEP GRAY (BGY)
OYSTER (CRT)		CHARCOAL (CNC)
BRONZE (JBR)		BLACK (BLK)

JOINT WIDTH		MOVEMENT			
		MINIMUM		MAXIMUM	
US	mm	US	mm	US	mm
8"	203	2 3/4"	70	16"	406

FINISH: CLEAR ANODIZED - ALUM

PROJECT:

CUSTOMER:

LOCATION:

APPLICATION - EXTERIOR
ROOF/ROOF CONCEALED PAN EXPANSION JOINT SYSTEM -

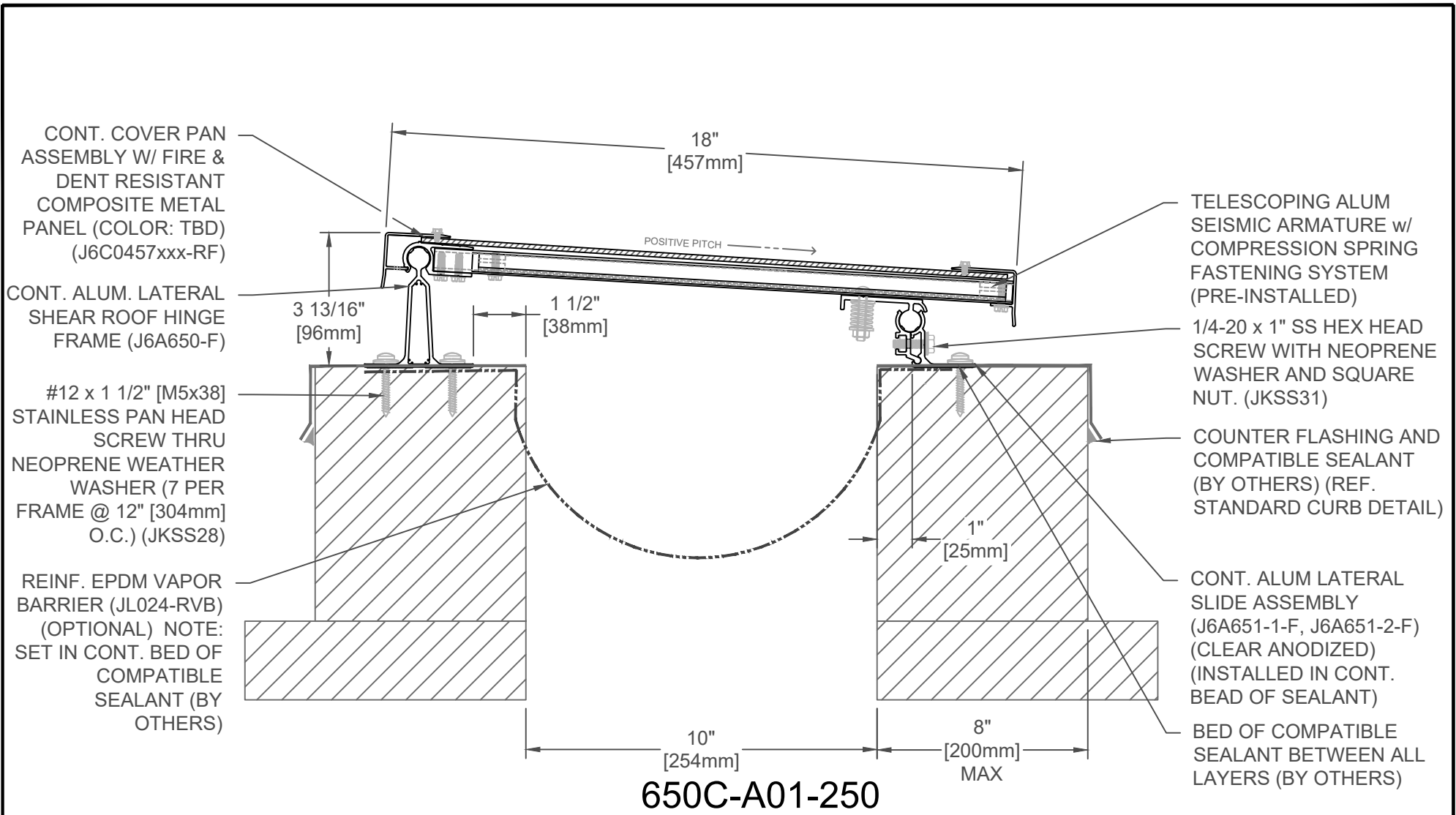
DATE: 9/4/18

SCALE: 1:4

DOC: CADJM.248/R1

inpro.

For More Information Visit: Inprocorp.com



CONT. COVER PAN ASSEMBLY W/ FIRE & DENT RESISTANT COMPOSITE METAL PANEL (COLOR: TBD) (J6C0457xxx-RF)

CONT. ALUM. LATERAL SHEAR ROOF HINGE FRAME (J6A650-F)

#12 x 1 1/2" [M5x38] STAINLESS PAN HEAD SCREW THRU NEOPRENE WEATHER WASHER (7 PER FRAME @ 12" [304mm] O.C.) (JKSS28)

REINF. EPDM VAPOR BARRIER (JL024-RVB) (OPTIONAL) NOTE: SET IN CONT. BED OF COMPATIBLE SEALANT (BY OTHERS)

TELESCOPING ALUM SEISMIC ARMATURE w/ COMPRESSION SPRING FASTENING SYSTEM (PRE-INSTALLED)

1/4-20 x 1" SS HEX HEAD SCREW WITH NEOPRENE WASHER AND SQUARE NUT. (JKSS31)

COUNTER FLASHING AND COMPATIBLE SEALANT (BY OTHERS) (REF. STANDARD CURB DETAIL)

CONT. ALUM LATERAL SLIDE ASSEMBLY (J6A651-1-F, J6A651-2-F) (CLEAR ANODIZED) (INSTALLED IN CONT. BEAD OF SEALANT)

BED OF COMPATIBLE SEALANT BETWEEN ALL LAYERS (BY OTHERS)

650C-A01-250

SPECIFY PANEL COLOR:		
CLEAR ANO. (MNC)	ALUM. GRAY (AGT)	
BONE WHITE (BNT)	DEEP GRAY (BGY)	
OYSTER (CRT)	CHARCOAL (CNC)	
BRONZE (JBR)	BLACK (BLK)	

JOINT WIDTH		MOVEMENT			
		MINIMUM		MAXIMUM	
US	mm	US	mm	US	mm
10"	254	2 3/4"	70	20"	508

FINISH: CLEAR ANODIZED - ALUM

PROJECT:

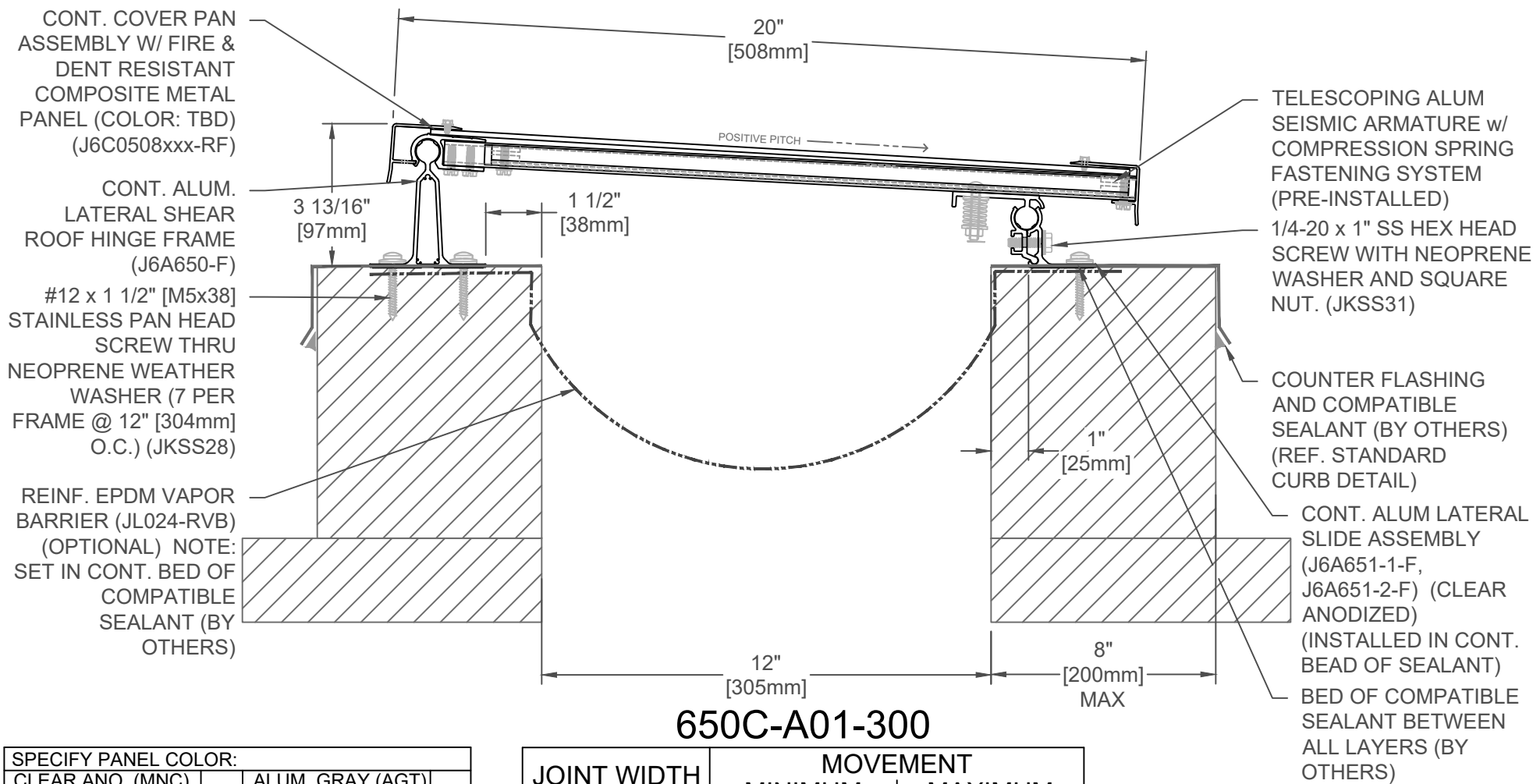
CUSTOMER:

LOCATION:

APPLICATION - EXTERIOR
 ROOF/ROOF CONCEALED PAN EXPANSION JOINT SYSTEM -

DATE: 9/4/18
 SCALE: 1:4
 DOC: CADJM.248/R1





650C-A01-300

SPECIFY PANEL COLOR:		
CLEAR ANO. (MNC)	ALUM. GRAY (AGT)	
BONE WHITE (BNT)	DEEP GRAY (BGY)	
OYSTER (CRT)	CHARCOAL (CNC)	
BRONZE (JBR)	BLACK (BLK)	

JOINT WIDTH		MOVEMENT			
		MINIMUM		MAXIMUM	
US	mm	US	mm	US	mm
12"	305	2 3/4"	70	24"	610

FINISH: CLEAR ANODIZED - ALUM
PROJECT:
CUSTOMER:
LOCATION:

APPLICATION - EXTERIOR
 ROOF/ROOF CONCEALED PAN EXPANSION JOINT SYSTEM -

DATE: 9/4/18
 SCALE: 1:4
 DOC: CADJM.248/R1

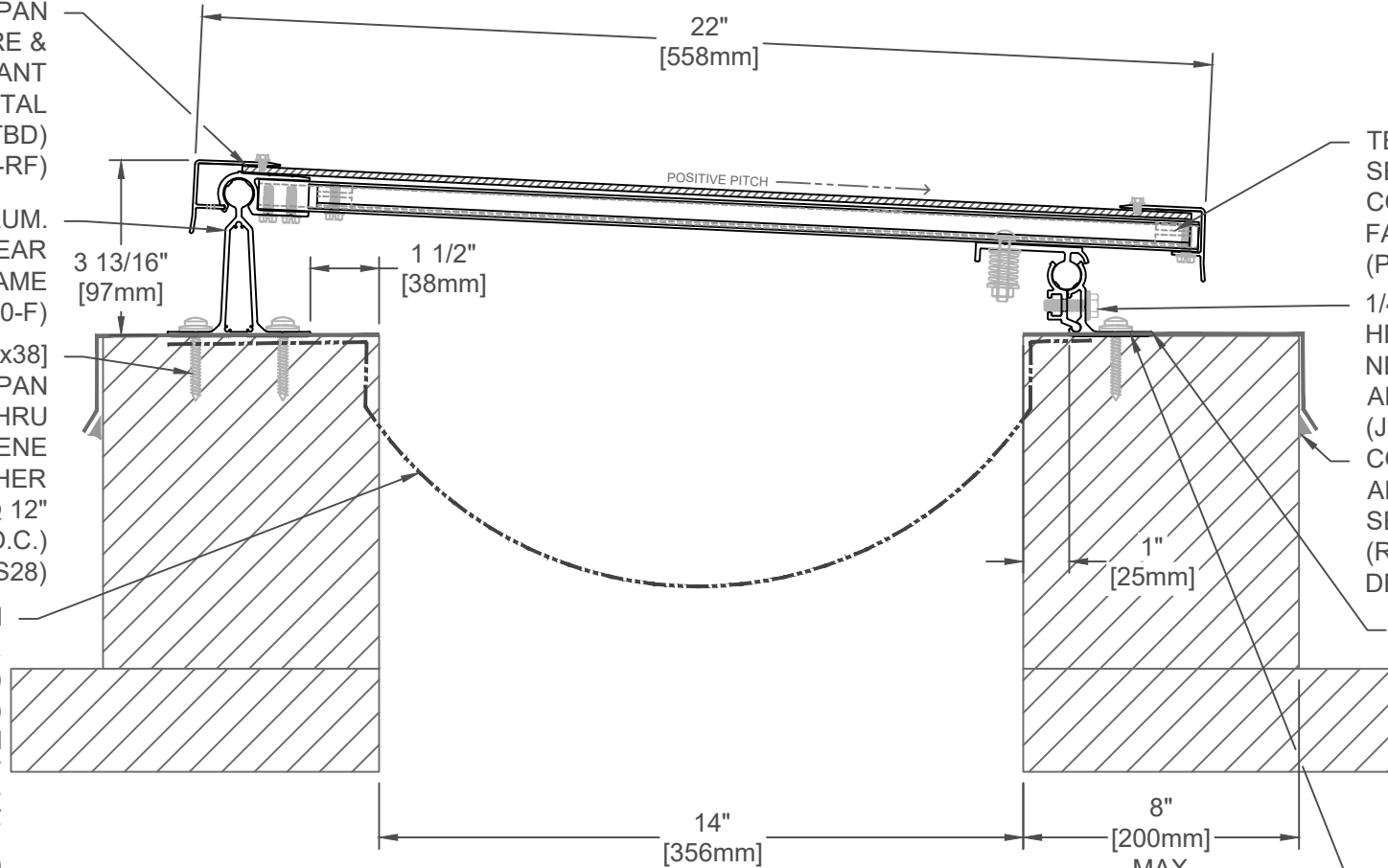


CONT. COVER PAN ASSEMBLY W/ FIRE & DENT RESISTANT COMPOSITE METAL PANEL (COLOR: TBD) (J6C0558xxx-RF)

CONT. ALUM. LATERAL SHEAR ROOF HINGE FRAME (J6A650-F)

#12 x 1 1/2" [M5x38] STAINLESS PAN HEAD SCREW THRU NEOPRENE WEATHER WASHER (7 PER FRAME @ 12" [304mm] O.C.) (JKSS28)

REINF. EPDM VAPOR BARRIER (JL024-RVB) (OPTIONAL)
NOTE: SET IN CONT. BED OF COMPATIBLE SEALANT (BY OTHERS)



TELESCOPING ALUM SEISMIC ARMATURE w/ COMPRESSION SPRING FASTENING SYSTEM (PRE-INSTALLED)

1/4-20 x 1" SS HEX HEAD SCREW WITH NEOPRENE WASHER AND SQUARE NUT. (JKSS31)

COUNTER FLASHING AND COMPATIBLE SEALANT (BY OTHERS) (REF. STANDARD CURB DETAIL)

CONT. ALUM LATERAL SLIDE ASSEMBLY (J6A651-1-F, J6A651-2-F) (CLEAR ANODIZED) (INSTALLED IN CONT. BEAD OF SEALANT)

BED OF COMPATIBLE SEALANT BETWEEN ALL LAYERS (BY OTHERS)

650C-A01-350

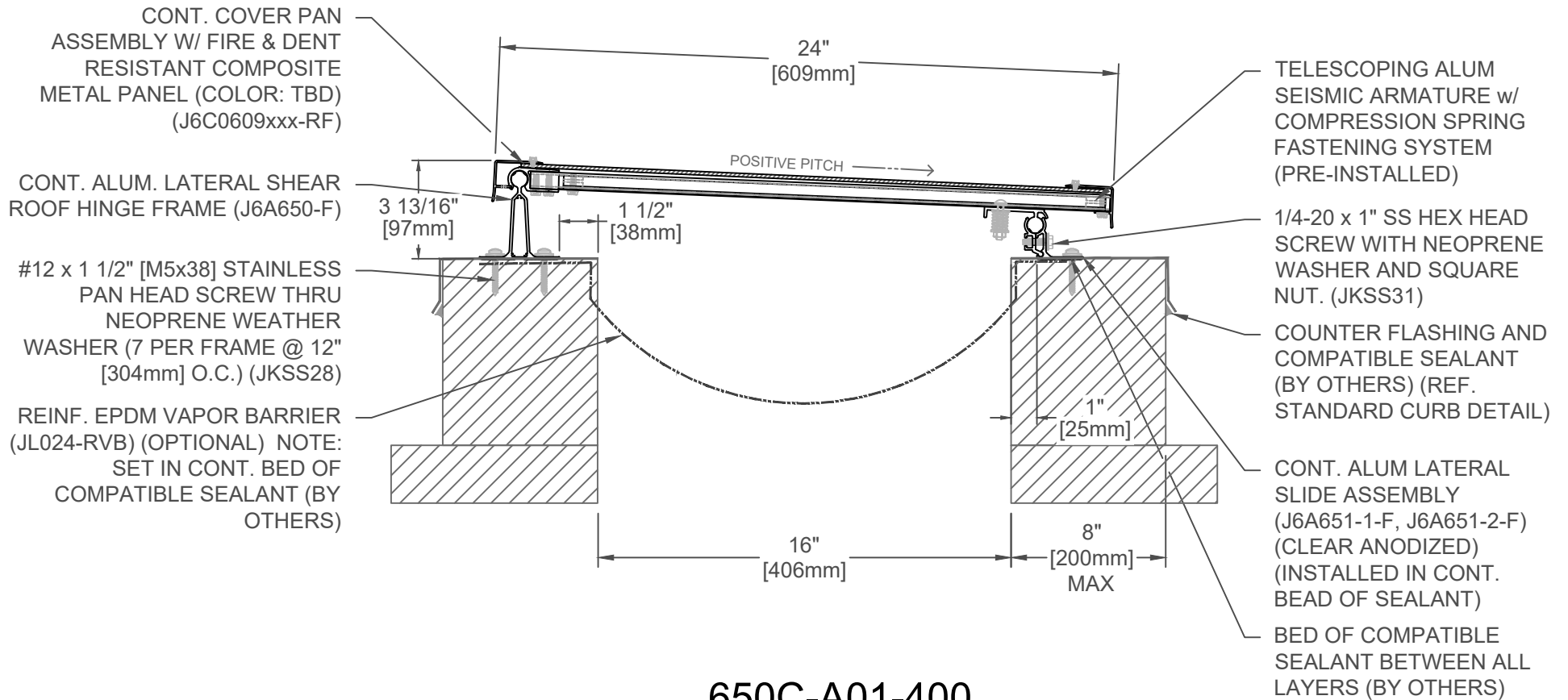
SPECIFY PANEL COLOR:		
CLEAR ANO. (MNC)	ALUM. GRAY (AGT)	
BONE WHITE (BNT)	DEEP GRAY (BGY)	
OYSTER (CRT)	CHARCOAL (CNC)	
BRONZE (JBR)	BLACK (BLK)	

JOINT WIDTH		MOVEMENT			
		MINIMUM		MAXIMUM	
US	mm	US	mm	US	mm
14"	356	2 3/4"	70	28"	711

FINISH: CLEAR ANODIZED - ALUM
PROJECT:
CUSTOMER:
LOCATION:

APPLICATION - EXTERIOR
ROOF/ROOF CONCEALED PAN EXPANSION JOINT SYSTEM -

DATE:	9/4/18
SCALE:	1:4
DOC:	CADJM.248/R1



650C-A01-400

SPECIFY PANEL COLOR:		
CLEAR ANO. (MNC)		ALUM. GRAY (AGT)
BONE WHITE (BNT)		DEEP GRAY (BGY)
OYSTER (CRT)		CHARCOAL (CNC)
BRONZE (JBR)		BLACK (BLK)

JOINT WIDTH		MOVEMENT			
		MINIMUM		MAXIMUM	
US	mm	US	mm	US	mm
16"	406	2 3/4"	70	32"	813

FINISH: CLEAR ANODIZED - ALUM

PROJECT:

CUSTOMER:

LOCATION:

APPLICATION - EXTERIOR
ROOF/ROOF CONCEALED PAN EXPANSION JOINT SYSTEM -

DATE: 9/4/18

SCALE: 1:6

DOC: CADJM.248/R1

inpro.

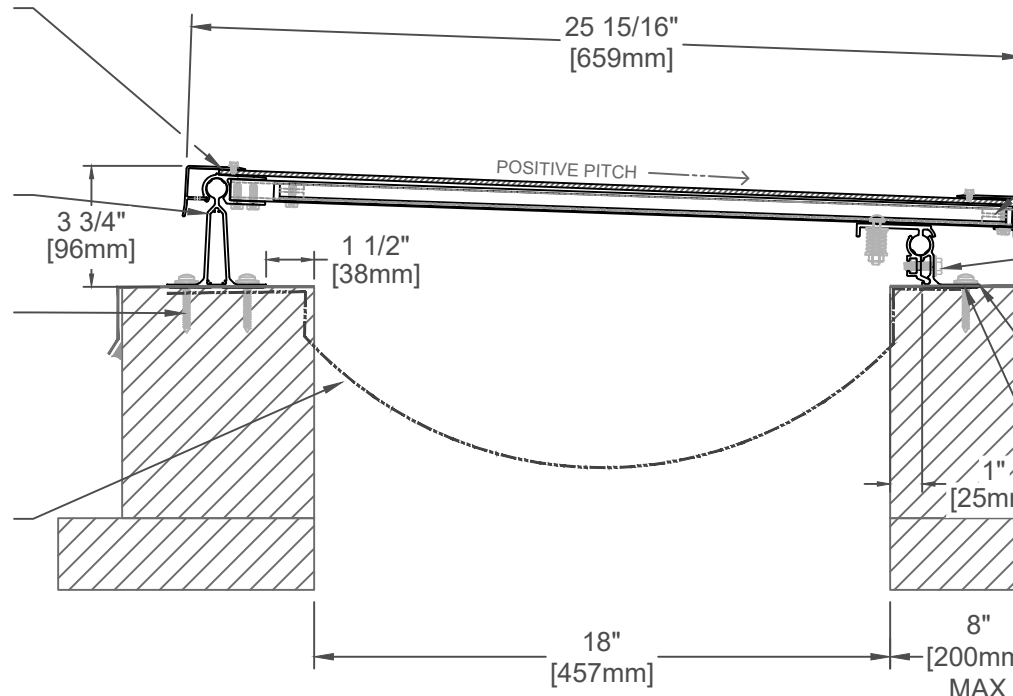
For More Information Visit: Inprocorp.com

CONT. COVER PAN ASSEMBLY W/ FIRE & DENT RESISTANT COMPOSITE METAL PANEL (COLOR: TBD) (J6C0659xxx-RF)

CONT. ALUM. LATERAL SHEAR ROOF HINGE FRAME (J6A650-F)

#12 x 1 1/2" [M5x38] STAINLESS PAN HEAD SCREW THRU NEOPRENE WEATHER WASHER (7 PER FRAME @ 12" [304mm] O.C.) (JKSS28)

REINF. EPDM VAPOR BARRIER (JL024-RVB) (OPTIONAL) NOTE: SET IN CONT. BED OF COMPATIBLE SEALANT (BY OTHERS)



TELESCOPING ALUM SEISMIC ARMATURE w/ COMPRESSION SPRING FASTENING SYSTEM (PRE-INSTALLED)

1/4-20 x 1" SS HEX HEAD SCREW WITH NEOPRENE WASHER AND SQUARE NUT. (JKSS31)

COUNTER FLASHING AND COMPATIBLE SEALANT (BY OTHERS) (REF. STANDARD CURB DETAIL)

CONT. ALUM LATERAL SLIDE ASSEMBLY (J6A651-1-F, J6A651-2-F) (CLEAR ANODIZED) (INSTALLED IN CONT. BEAD OF SEALANT)

BED OF COMPATIBLE SEALANT BETWEEN ALL LAYERS (BY OTHERS)

650C-A01-450

SPECIFY PANEL COLOR:		
CLEAR ANO. (MNC)		ALUM. GRAY (AGT)
BONE WHITE (BNT)		DEEP GRAY (BGY)
OYSTER (CRT)		CHARCOAL (CNC)
BRONZE (JBR)		BLACK (BLK)

JOINT WIDTH		MOVEMENT			
		MINIMUM		MAXIMUM	
US	mm	US	mm	US	mm
18"	457	2 3/4"	70	36"	914

FINISH: CLEAR ANODIZED - ALUM

PROJECT:

CUSTOMER:

LOCATION:

APPLICATION - EXTERIOR
ROOF/ROOF CONCEALED PAN EXPANSION JOINT SYSTEM -

DATE: 9/4/18

SCALE: 1:6

DOC: CADJM.248/R1

inpro.

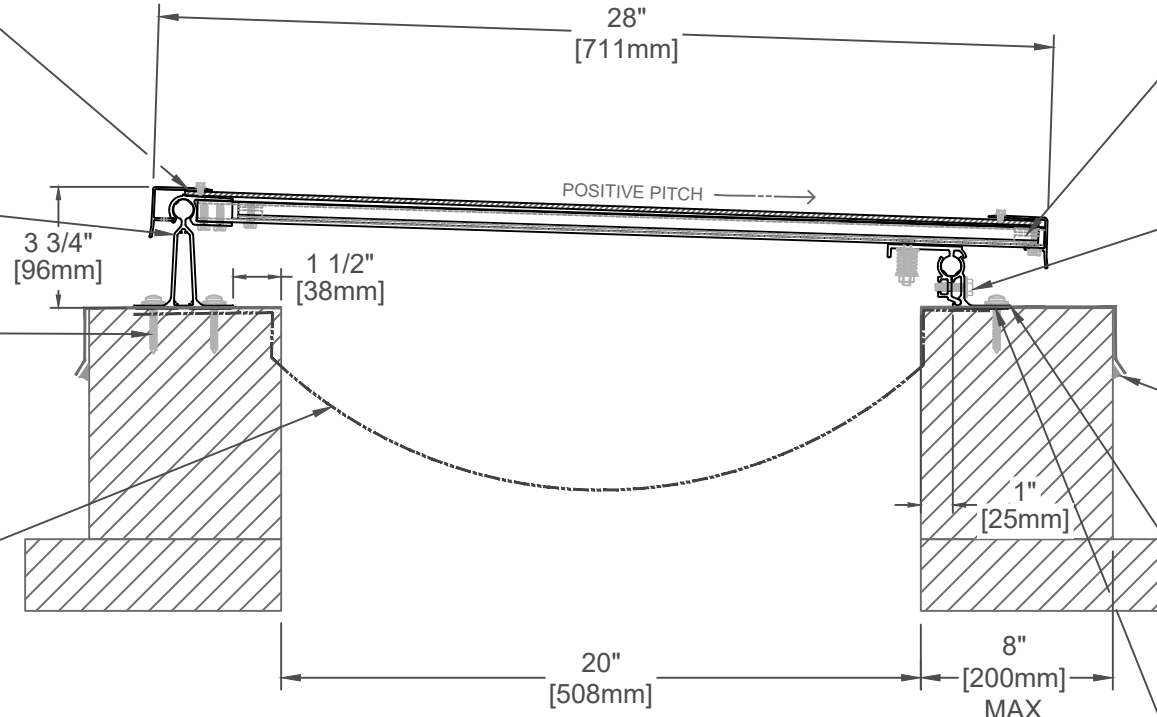
For More Information Visit: Inprocorp.com

CONT. COVER PAN ASSEMBLY W/ FIRE & DENT RESISTANT COMPOSITE METAL PANEL (COLOR: TBD) (J6C0711xxx-RF)

CONT. ALUM. LATERAL SHEAR ROOF HINGE FRAME (J6A650-F)

#12 x 1 1/2" [M5x38] STAINLESS PAN HEAD SCREW THRU NEOPRENE WEATHER WASHER (7 PER FRAME @ 12" [304mm] O.C.) (JKSS28)

REINF. EPDM VAPOR BARRIER (JL024-RVB) (OPTIONAL) NOTE: SET IN CONT. BED OF COMPATIBLE SEALANT (BY OTHERS)



TELESCOPING ALUM SEISMIC ARMATURE w/ COMPRESSION SPRING FASTENING SYSTEM (PRE-INSTALLED)

1/4-20 x 1" SS HEX HEAD SCREW WITH NEOPRENE WASHER AND SQUARE NUT. (JKSS31)

COUNTER FLASHING AND COMPATIBLE SEALANT (BY OTHERS) (REF. STANDARD CURB DETAIL)

CONT. ALUM LATERAL SLIDE ASSEMBLY (J6A651-1-F, J6A651-2-F) (CLEAR ANODIZED) (INSTALLED IN CONT. BEAD OF SEALANT)

BED OF COMPATIBLE SEALANT BETWEEN ALL LAYERS (BY OTHERS)

650C-A01-500

SPECIFY PANEL COLOR:		
CLEAR ANO. (MNC)		ALUM. GRAY (AGT)
BONE WHITE (BNT)		DEEP GRAY (BGY)
OYSTER (CRT)		CHARCOAL (CNC)
BRONZE (JBR)		BLACK (BLK)

JOINT WIDTH		MOVEMENT			
		MINIMUM		MAXIMUM	
US	mm	US	mm	US	mm
20"	508	2 3/4"	70	40"	1016

FINISH: CLEAR ANODIZED - ALUM

PROJECT:

CUSTOMER:

LOCATION:

APPLICATION - EXTERIOR
ROOF/ROOF CONCEALED PAN EXPANSION JOINT SYSTEM -

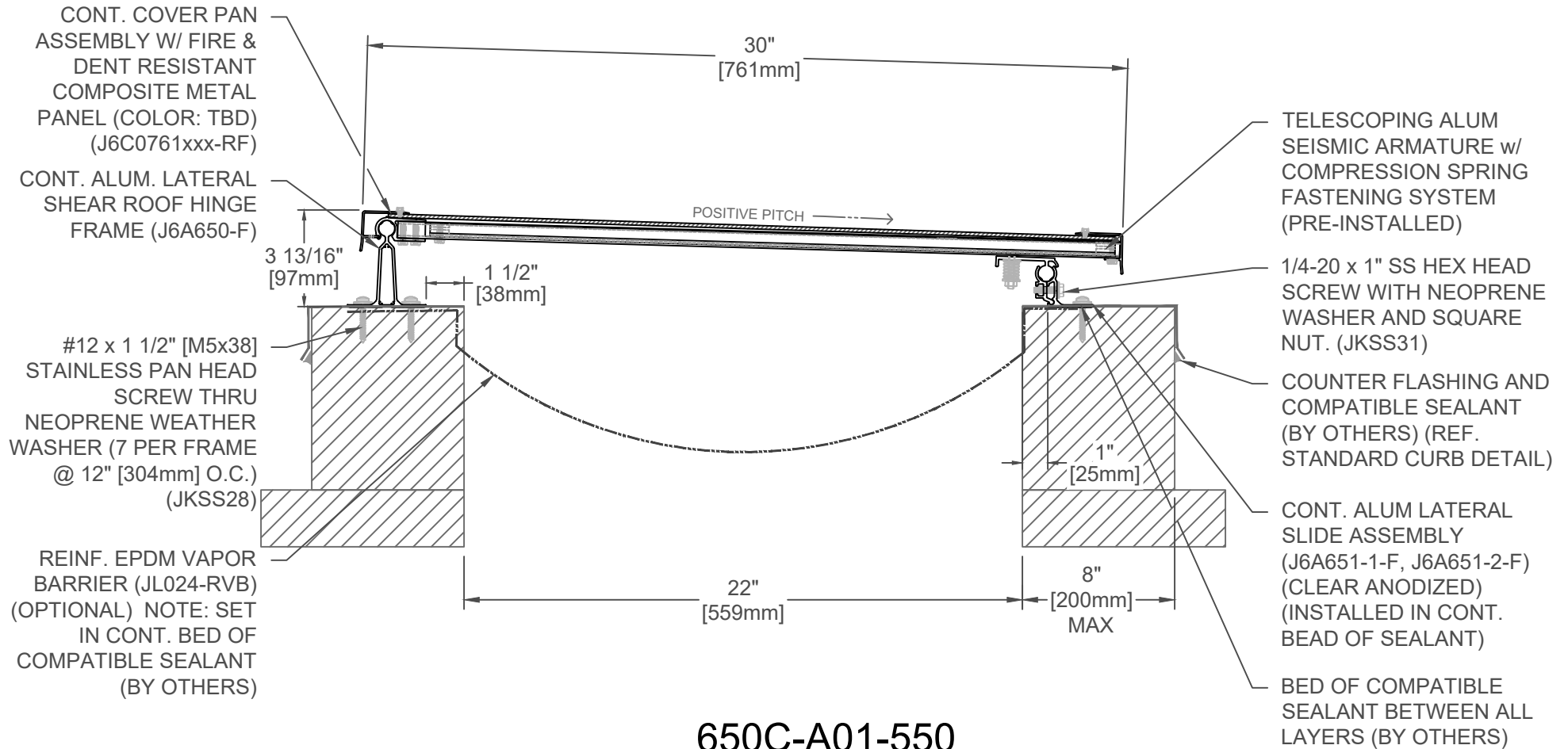
DATE: 9/4/18

SCALE: 1:6

DOC: CADJM.248/R1

inpro.

For More Information Visit: Inprocorp.com



650C-A01-550

SPECIFY PANEL COLOR:		
CLEAR ANO. (MNC)		ALUM. GRAY (AGT)
BONE WHITE (BNT)		DEEP GRAY (BGY)
OYSTER (CRT)		CHARCOAL (CNC)
BRONZE (JBR)		BLACK (BLK)

JOINT WIDTH		MOVEMENT			
		MINIMUM		MAXIMUM	
US	mm	US	mm	US	mm
22"	559	2 3/4"	70	44"	1118

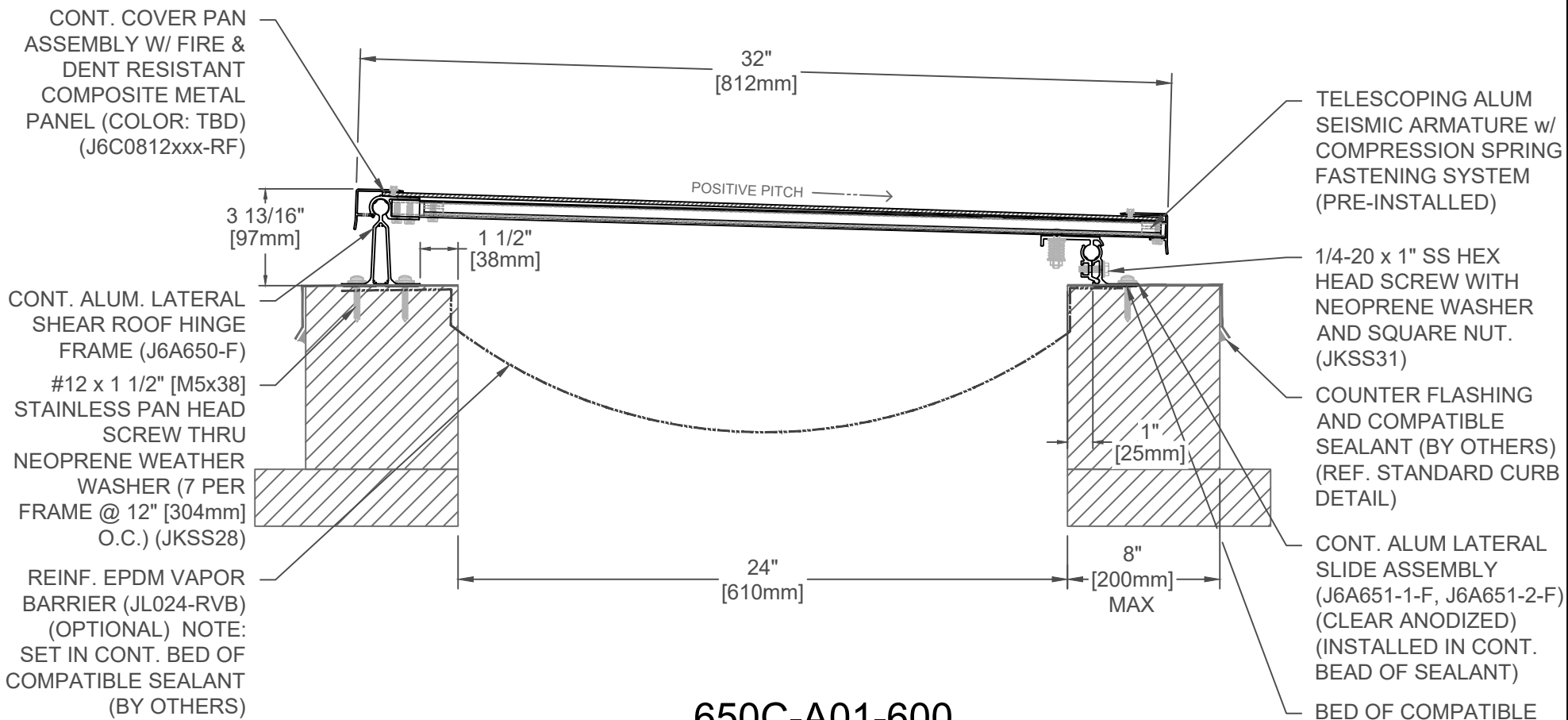
FINISH: CLEAR ANODIZED - ALUM
PROJECT:
CUSTOMER:
LOCATION:

APPLICATION - EXTERIOR
ROOF/ROOF CONCEALED PAN EXPANSION JOINT SYSTEM -

DATE: 9/4/18
SCALE: 1:6
DOC: CADJM.248/R1

inpro.

For More Information Visit: Inprocorp.com



650C-A01-600

SPECIFY PANEL COLOR:	
CLEAR ANO. (MNC)	ALUM. GRAY (AGT)
BONE WHITE (BNT)	DEEP GRAY (BGY)
OYSTER (CRT)	CHARCOAL (CNC)
BRONZE (JBR)	BLACK (BLK)

JOINT WIDTH		MOVEMENT			
		MINIMUM		MAXIMUM	
US	mm	US	mm	US	mm
24"	610	2 3/4"	70	48"	1219

FINISH: CLEAR ANODIZED - ALUM

PROJECT:

CUSTOMER:

LOCATION:

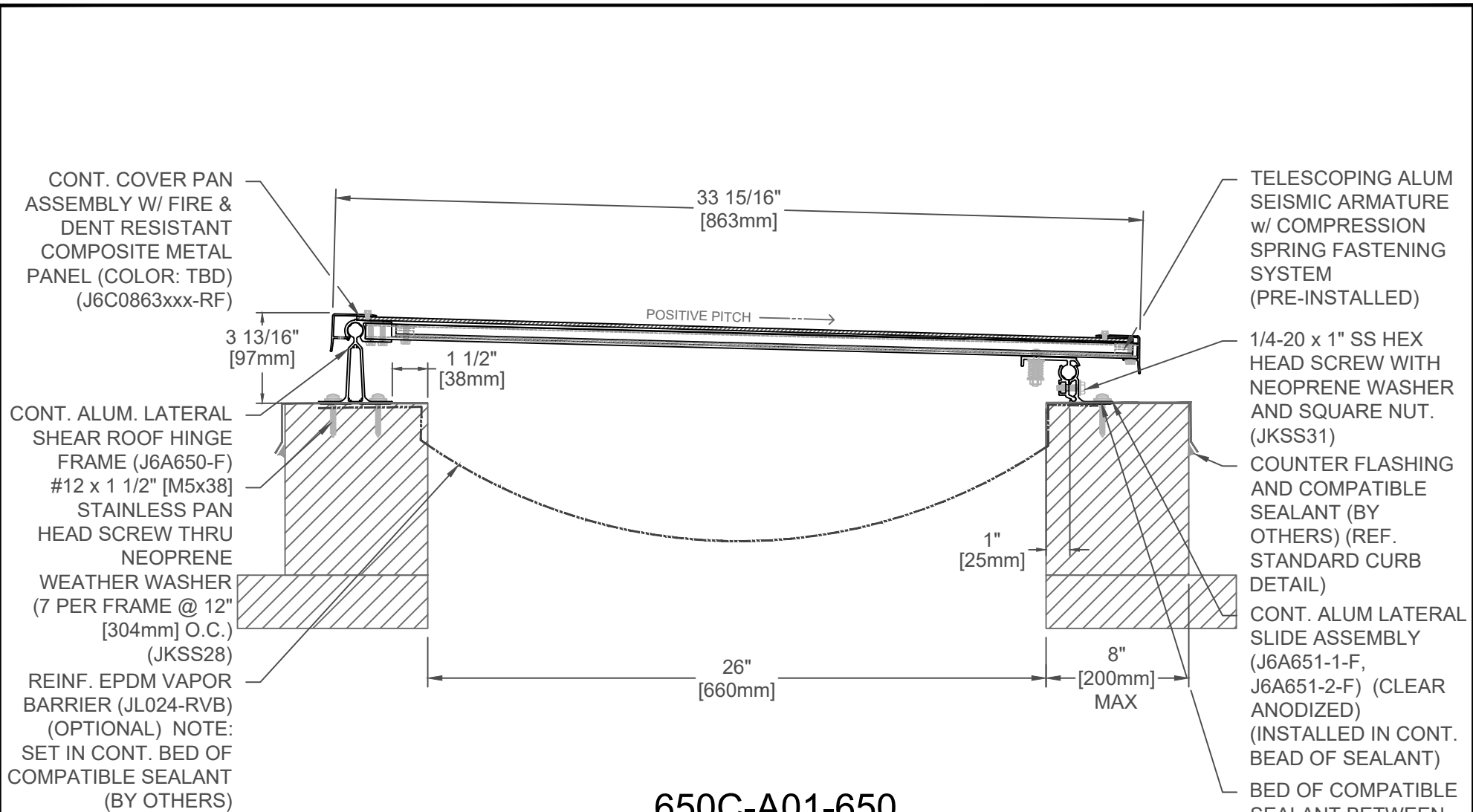
APPLICATION - EXTERIOR
 ROOF/ROOF CONCEALED PAN EXPANSION JOINT SYSTEM -

DATE: 9/4/18

SCALE: 1:6

DOC: CADJM.248/R1





650C-A01-650

SPECIFY PANEL COLOR:	
CLEAR ANO. (MNC)	ALUM. GRAY (AGT)
BONE WHITE (BNT)	DEEP GRAY (BGY)
OYSTER (CRT)	CHARCOAL (CNC)
BRONZE (JBR)	BLACK (BLK)

JOINT WIDTH		MOVEMENT			
		MINIMUM		MAXIMUM	
US	mm	US	mm	US	mm
26"	660	2 3/4"	70	52"	1321

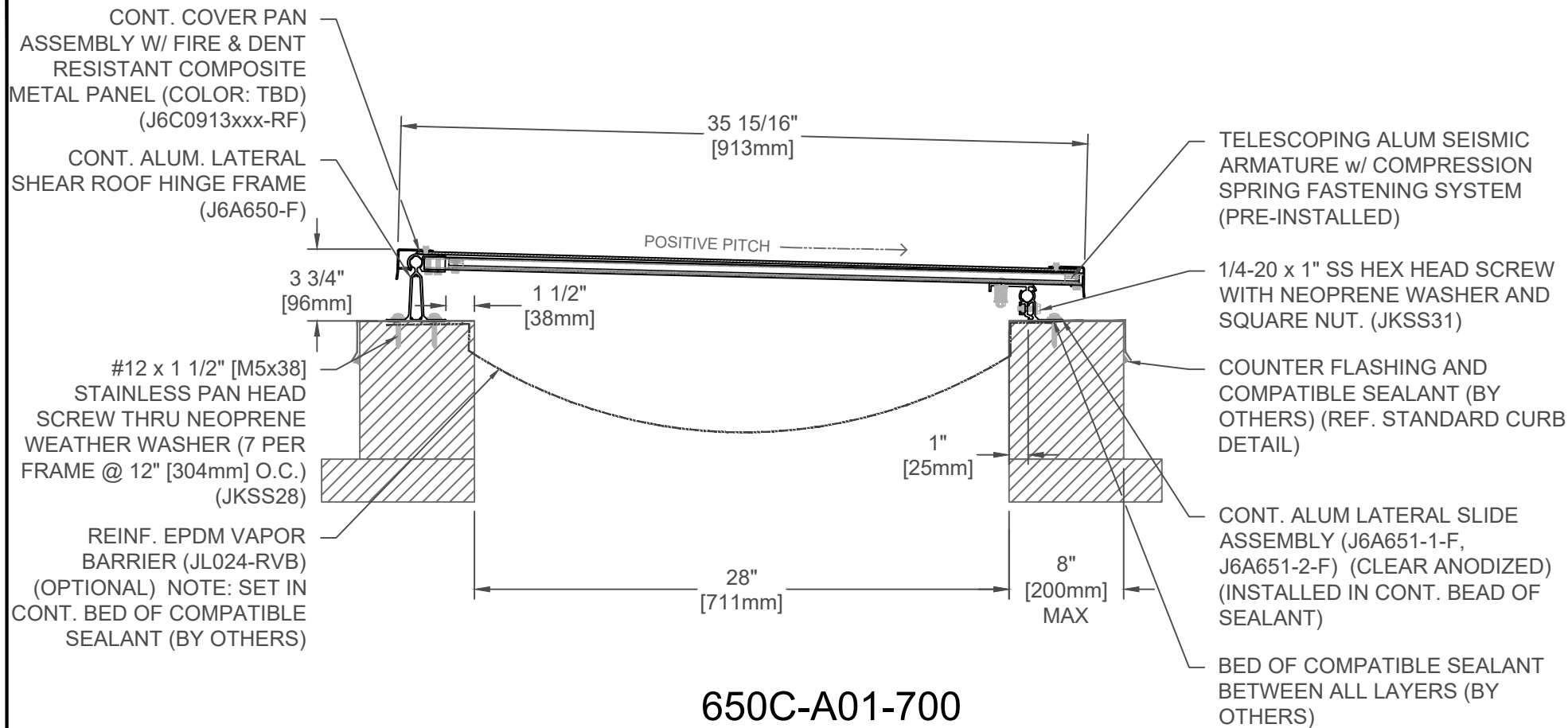
FINISH: CLEAR ANODIZED - ALUM
PROJECT:
CUSTOMER:
LOCATION:

APPLICATION - EXTERIOR
ROOF/ROOF CONCEALED PAN EXPANSION JOINT SYSTEM -

DATE: 9/4/18
SCALE: 1:6
DOC: CADJM.248/R1

inpro.

For More Information Visit: Inprocorp.com



650C-A01-700

SPECIFY PANEL COLOR:		
CLEAR ANO. (MNC)		ALUM. GRAY (AGT)
BONE WHITE (BNT)		DEEP GRAY (BGY)
OYSTER (CRT)		CHARCOAL (CNC)
BRONZE (JBR)		BLACK (BLK)

JOINT WIDTH		MOVEMENT			
		MINIMUM		MAXIMUM	
US	mm	US	mm	US	mm
28"	711	2 3/4"	70	56"	1422

FINISH: CLEAR ANODIZED - ALUM

PROJECT:

CUSTOMER:

LOCATION:

APPLICATION - EXTERIOR
 ROOF/ROOF CONCEALED PAN EXPANSION JOINT SYSTEM

DATE: 9/4/18

SCALE: 1:8

DOC: CADJM.248/R1

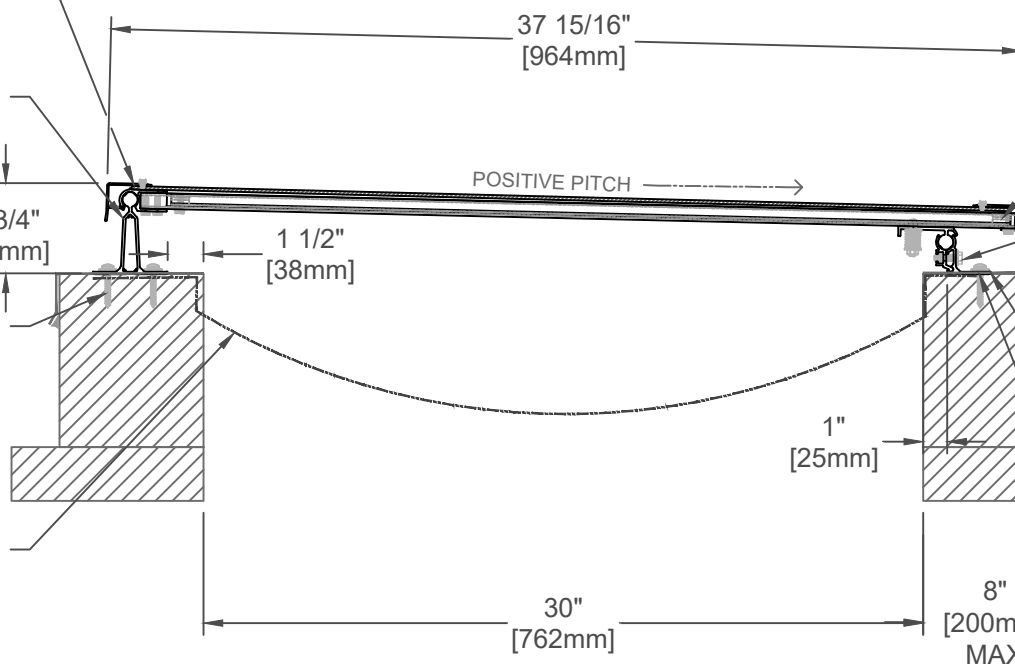


CONT. COVER PAN ASSEMBLY W/ FIRE & DENT RESISTANT COMPOSITE METAL PANEL (COLOR: TBD) (J6C0964xxx-RF)

CONT. ALUM. LATERAL SHEAR ROOF HINGE FRAME (J6A650-F)

#12 x 1 1/2" [M5x38] STAINLESS PAN HEAD SCREW THRU NEOPRENE WEATHER WASHER (7 PER FRAME @ 12" [304mm] O.C.) (JKSS28)

REINF. EPDM VAPOR BARRIER (JL024-RVB) (OPTIONAL) NOTE: SET IN CONT. BED OF COMPATIBLE SEALANT (BY OTHERS)



TELESCOPING ALUM SEISMIC ARMATURE w/ COMPRESSION SPRING FASTENING SYSTEM (PRE-INSTALLED)

1/4-20 x 1" SS HEX HEAD SCREW WITH NEOPRENE WASHER AND SQUARE NUT. (JKSS31)

COUNTER FLASHING AND COMPATIBLE SEALANT (BY OTHERS) (REF. STANDARD CURB DETAIL)

CONT. ALUM LATERAL SLIDE ASSEMBLY (J6A651-1-F, J6A651-2-F) (CLEAR ANODIZED) (INSTALLED IN CONT. BEAD OF SEALANT)

BED OF COMPATIBLE SEALANT BETWEEN ALL LAYERS (BY OTHERS)

650C-A01-750

SPECIFY PANEL COLOR:		
CLEAR ANO. (MNC)		ALUM. GRAY (AGT)
BONE WHITE (BNT)		DEEP GRAY (BGY)
OYSTER (CRT)		CHARCOAL (CNC)
BRONZE (JBR)		BLACK (BLK)

JOINT WIDTH		MOVEMENT			
		MINIMUM		MAXIMUM	
US	mm	US	mm	US	mm
30"	762	2 3/4"	70	60"	1524

FINISH: CLEAR ANODIZED - ALUM

PROJECT:

CUSTOMER:

LOCATION:

APPLICATION - EXTERIOR
ROOF/ROOF CONCEALED PAN EXPANSION JOINT SYSTEM

DATE: 9/4/18

SCALE: 1:8

DOC: CADJM.248/R1



For More Information Visit: Inprocorp.com

CONT. COVER PAN ASSEMBLY W/ FIRE & DENT RESISTANT COMPOSITE METAL PANEL (COLOR: TBD) (J6C01015xxx-RF)

CONT. ALUM. LATERAL SHEAR ROOF HINGE FRAME (J6A650-F)

3 3/4" [96mm]

1 1/2" [38mm]

39 15/16" [1015mm]

POSITIVE PITCH

TELESCOPING ALUM SEISMIC ARMATURE w/ COMPRESSION SPRING FASTENING SYSTEM (PRE-INSTALLED)

1/4-20 x 1" SS HEX HEAD SCREW WITH NEOPRENE WASHER AND SQUARE NUT. (JKSS31)

COUNTER FLASHING AND COMPATIBLE SEALANT (BY OTHERS) (REF. STANDARD CURB DETAIL)

#12 x 1 1/2" [M5x38] STAINLESS PAN HEAD SCREW THRU NEOPRENE WEATHER WASHER (7 PER FRAME @ 12" [304mm] O.C.) (JKSS28)

1" [25mm]

CONT. ALUM LATERAL SLIDE ASSEMBLY (J6A651-1-F, J6A651-2-F) (CLEAR ANODIZED) (INSTALLED IN CONT. BEAD OF SEALANT)

REINF. EPDM VAPOR BARRIER (JL024-RVB) (OPTIONAL) NOTE: SET IN CONT. BED OF COMPATIBLE SEALANT (BY OTHERS)

32" [813mm]

8" [200mm] MAX

BED OF COMPATIBLE SEALANT BETWEEN ALL LAYERS (BY OTHERS)

650C-A01-800

SPECIFY PANEL COLOR:		
CLEAR ANO. (MNC)		ALUM. GRAY (AGT)
BONE WHITE (BNT)		DEEP GRAY (BGY)
OYSTER (CRT)		CHARCOAL (CNC)
BRONZE (JBR)		BLACK (BLK)

JOINT WIDTH		MOVEMENT			
		MINIMUM		MAXIMUM	
US	mm	US	mm	US	mm
32"	813	2 3/4"	70	64"	1626

FINISH: CLEAR ANODIZED - ALUM

PROJECT:

CUSTOMER:

LOCATION:

APPLICATION - EXTERIOR
ROOF/ROOF CONCEALED PAN EXPANSION JOINT SYSTEM

DATE: 9/4/18

SCALE: 1:8

DOC: CADJM.248/R1

inpro.

For More Information Visit: Inprocorp.com