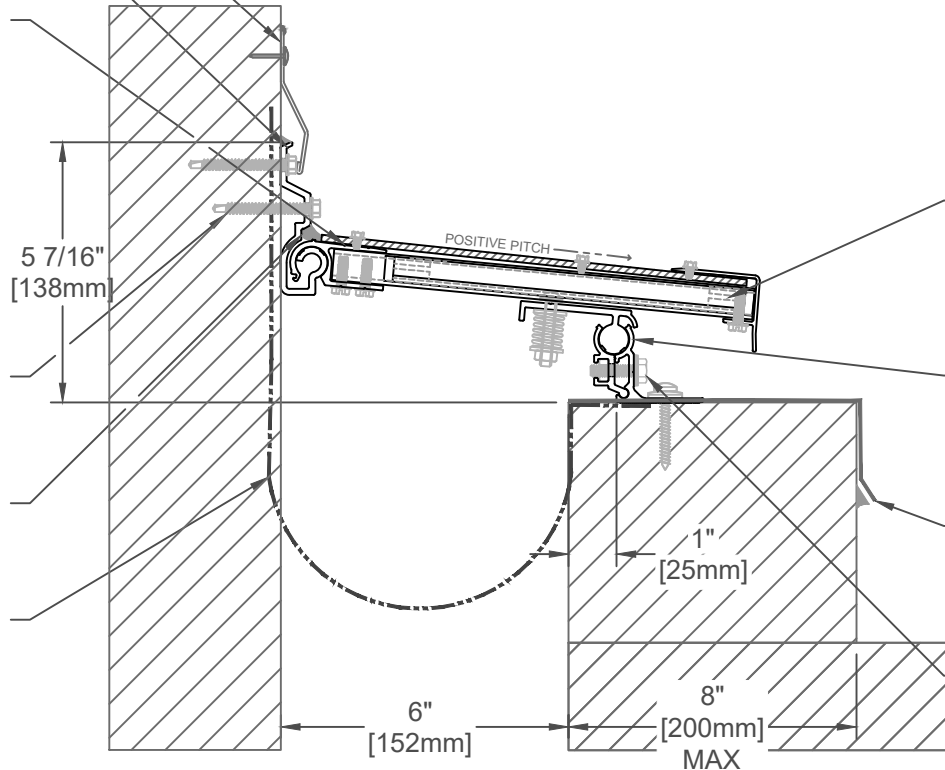


COUNTER FLASHING (BY OTHERS)

CONT. ALUM. ROOF TO WALL  
RECEIVING HINGE (J6A655-F) SET A  
BED OF SEALANT (BY OTHERS)

CONT. COVER PAN ASSEMBLY W/  
FIRE & DENT RESISTANT  
COMPOSITE METAL PANEL  
(COLOR: TBD) (J6C0254xxx-RF1)



TELESCOPING ALUM SEISMIC  
ARMATURE w/ COMPRESSION  
SPRING FASTENING SYSTEM  
(PRE-INSTALLED)

CONT. ALUM LATERAL SLIDE  
ASSEMBLY (J6A651-1-F, J6A651-2-F)  
(CLEAR ANODIZED) (INSTALLED IN  
CONT. BED OF SEALANT)

COUNTER FLASHING AND  
COMPATIBLE SEALANT (BY  
OTHERS) (REF. STANDARD  
CURB DETAIL)

1/4-20 x 1" SS HEX HEAD SCREW  
WITH NEOPRENE WASHER AND  
SQUARE NUT. (JKSS31)

#12 x 2" [M5x50] STAINLESS HEX  
HEAD SCREW (7 PER FRAME @  
12" [304mm] O.C.) (JKSS12)

BEAD OF EXTERIOR GRADE  
SEALANT (BY OTHERS)

REINF. EPDM VAPOR BARRIER  
(JL024-RVB) (OPTIONAL) NOTE: SET  
IN CONT. BED OF COMPATIBLE  
SEALANT (BY OTHERS)

## 650C-A02-150

SPECIFY PANEL COLOR:		
CLEAR ANO. (MNC)		ALUM. GRAY (AGT)
BONE WHITE (BNT)		DEEP GRAY (BGY)
OYSTER (CRT)		CHARCOAL (CNC)
BRONZE (JBR)		BLACK (BLK)

JOINT WIDTH		MOVEMENT			
		MINIMUM		MAXIMUM	
US	mm	US	mm	US	mm
6"	152	2 3/4"	70	12"	305

FINISH: CLEAR ANODIZED - ALUM
PROJECT:
CUSTOMER:
LOCATION:

APPLICATION - EXTERIOR  
ROOF/WALL CONCEALED PAN EXPANSION JOINT SYSTEM -

DATE:	12/8/23
SCALE:	1:4
DOC:	CADJM.250/R2

**inpro.**

For More Information Visit: [Inprocorp.com](http://Inprocorp.com)

COUNTER FLASHING (BY OTHERS)

CONT. ALUM. ROOF TO WALL  
RECIEVING HINGE (J6A655-F) SET  
A BED OF SEALANT (BY OTHERS)

CONT. COVER PAN ASSEMBLY W/  
FIRE & DENT RESISTANT  
COMPOSITE METAL PANEL  
(COLOR: TBD) (J6C0305xxx-RF1)

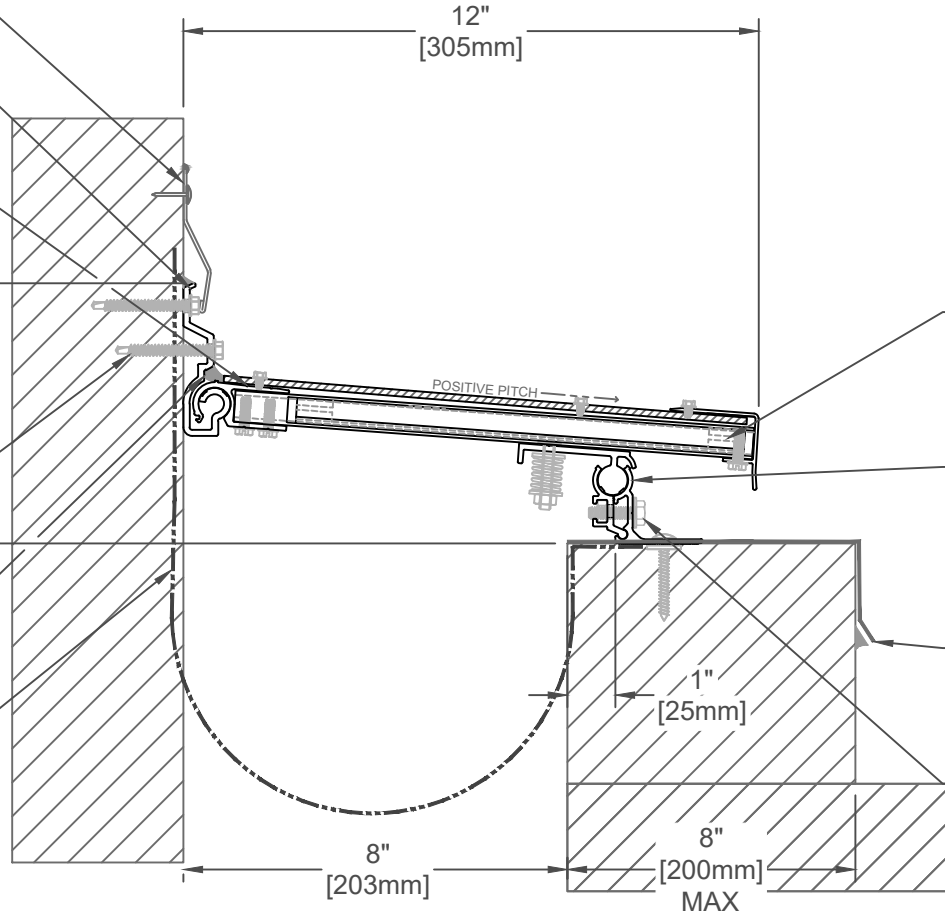
5 7/16"  
[138mm]

12"  
[305mm]

#12 x 2" [M5x50] STAINLESS HEX  
HEAD SCREW (7 PER FRAME @  
12" [304mm] O.C.) (JKSS12)

BEAD OF EXTERIOR GRADE  
SEALANT (BY OTHERS)

REINF. EPDM VAPOR BARRIER  
(JL024-RVB) (OPTIONAL) NOTE:  
SET IN CONT. BED OF  
COMPATIBLE SEALANT (BY  
OTHERS)



TELESCOPING ALUM SEISMIC  
ARMATURE w/ COMPRESSION  
SPRING FASTENING SYSTEM  
(PRE-INSTALLED)

CONT. ALUM LATERAL SLIDE  
ASSEMBLY (J6A651-1-F,  
J6A651-2-F) (CLEAR  
ANODIZED) (INSTALLED IN  
CONT. BEAD OF SEALANT)

COUNTER FLASHING AND  
COMPATIBLE SEALANT (BY  
OTHERS) (REF. STANDARD  
CURB DETAIL)

1/4-20 x 1" SS HEX HEAD SCREW  
WITH NEOPRENE WASHER AND  
SQUARE NUT. (JKSS31)

## 650C-A02-200

SPECIFY PANEL COLOR:

CLEAR ANO. (MNC)	ALUM. GRAY (AGT)
BONE WHITE (BNT)	DEEP GRAY (BGY)
OYSTER (CRT)	CHARCOAL (CNC)
BRONZE (JBR)	BLACK (BLK)

JOINT WIDTH		MOVEMENT			
		MINIMUM		MAXIMUM	
US	mm	US	mm	US	mm
8"	203	2 3/4"	70	16"	406

FINISH: CLEAR ANODIZED - ALUM

PROJECT:

CUSTOMER:

LOCATION:

APPLICATION - EXTERIOR  
ROOF/WALL CONCEALED PAN EXPANSION JOINT SYSTEM -

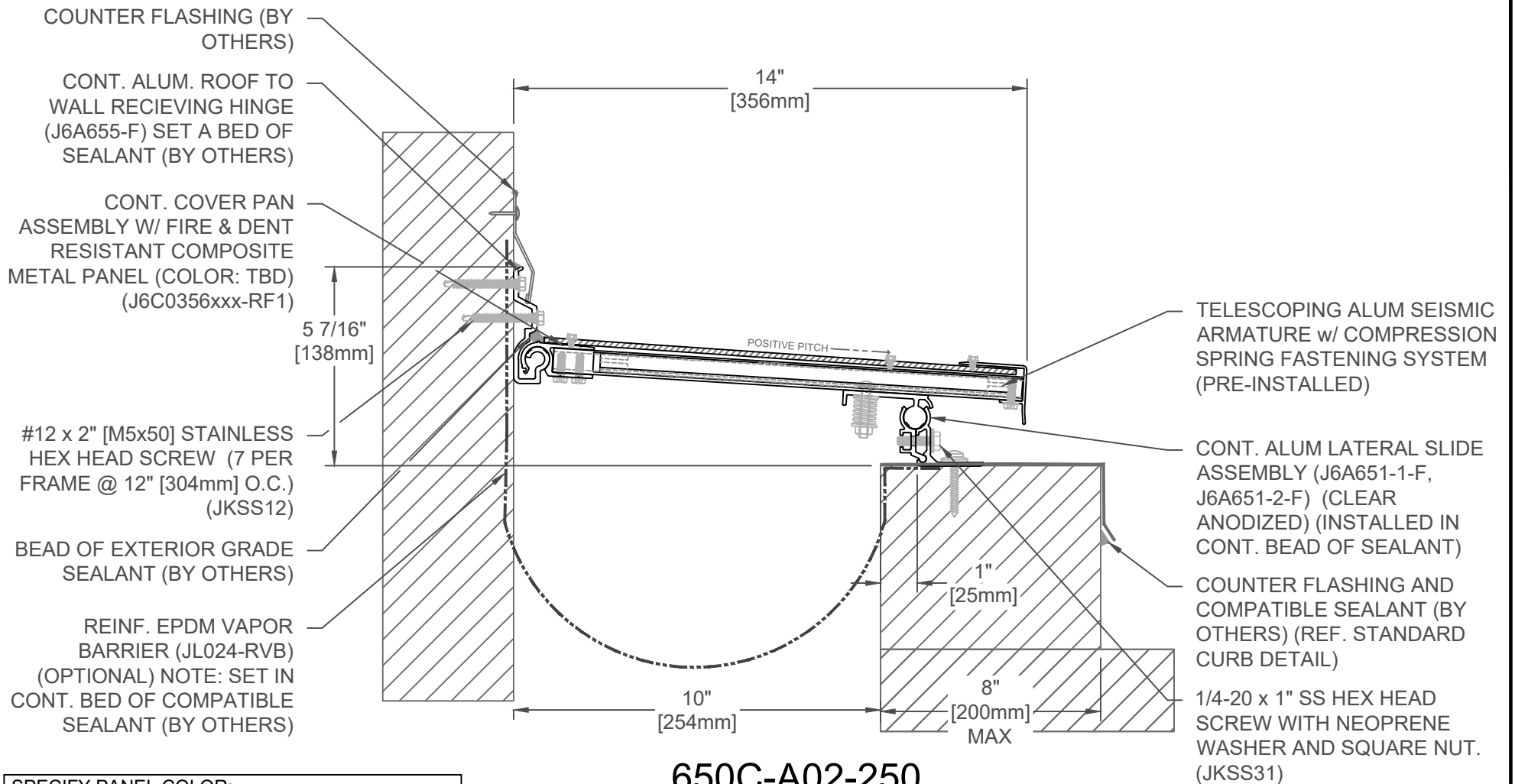
DATE: 12/8/23

SCALE: 1:4

DOC: CADJM.250/R2

**inpro.**

For More Information Visit: [Inprocorp.com](http://Inprocorp.com)



## 650C-A02-250

SPECIFY PANEL COLOR:	
CLEAR ANO. (MNC)	ALUM. GRAY (AGT)
BONE WHITE (BNT)	DEEP GRAY (BGY)
OYSTER (CRT)	CHARCOAL (CNC)
BRONZE (JBR)	BLACK (BLK)

JOINT WIDTH		MOVEMENT			
		MINIMUM		MAXIMUM	
US	mm	US	mm	US	mm
10"	254	2 3/4"	70	20"	508

FINISH: CLEAR ANODIZED - ALUM
PROJECT:
CUSTOMER:
LOCATION:

APPLICATION - EXTERIOR  
ROOF/WALL CONCEALED PAN EXPANSION JOINT SYSTEM -

DATE:	12/8/23
SCALE:	1:4
DOC:	CADJM.250/R2

**inpro.**

For More Information Visit: [Inprocorp.com](http://Inprocorp.com)

COUNTER FLASHING (BY OTHERS)

CONT. ALUM. ROOF TO WALL RECEIVING HINGE (J6A655-F) SET A BED OF SEALANT (BY OTHERS)

CONT. COVER PAN ASSEMBLY W/ FIRE & DENT RESISTANT COMPOSITE METAL PANEL (COLOR: TBD) (J6C0406xxx-RF1)

5 7/16" [138mm]

#12 x 2" [M5x50] STAINLESS HEX HEAD SCREW (7 PER FRAME @ 12" [304mm] O.C.) (JKSS12)

BEAD OF EXTERIOR GRADE SEALANT (BY OTHERS)

REINF. EPDM VAPOR BARRIER (JL024-RVB) (OPTIONAL) NOTE: SET IN CONT. BED OF COMPATIBLE SEALANT (BY OTHERS)

15 15/16" [406mm]

POSITIVE PITCH

TELESCOPING ALUM SEISMIC ARMATURE w/ COMPRESSION SPRING FASTENING SYSTEM (PRE-INSTALLED)

CONT. ALUM LATERAL SLIDE ASSEMBLY (J6A651-1-F, J6A651-2-F) (CLEAR ANODIZED) (INSTALLED IN CONT. BEAD OF SEALANT)

COUNTER FLASHING AND COMPATIBLE SEALANT (BY OTHERS) (REF. STANDARD CURB DETAIL)

1/4-20 x 1" SS HEX HEAD SCREW WITH NEOPRENE WASHER AND SQUARE NUT. (JKSS31)

1" [25mm]  
8" [200mm] MAX

### 650C-A02-300

SPECIFY PANEL COLOR:		
CLEAR ANO. (MNC)		ALUM. GRAY (AGT)
BONE WHITE (BNT)		DEEP GRAY (BGY)
OYSTER (CRT)		CHARCOAL (CNC)
BRONZE (JBR)		BLACK (BLK)

JOINT WIDTH		MOVEMENT			
		MINIMUM		MAXIMUM	
US	mm	US	mm	US	mm
12"	305	2 3/4"	70	24"	610

FINISH: CLEAR ANODIZED - ALUM

PROJECT:

CUSTOMER:

LOCATION:

APPLICATION - EXTERIOR  
ROOF/WALL CONCEALED PAN EXPANSION JOINT SYSTEM -

DATE: 12/8/23

SCALE: 1:4

DOC: CADJM.250/R2



For More Information Visit: [Inprocorp.com](http://Inprocorp.com)

COUNTER FLASHING (BY OTHERS)

CONT. ALUM. ROOF TO WALL RECIEVING HINGE (J6A655-F) SET A BED OF SEALANT (BY OTHERS)

CONT. COVER PAN ASSEMBLY W/ FIRE & DENT RESISTANT COMPOSITE METAL PANEL (COLOR: TBD) (J6C0457xxx-RF1)

5 7/16" [138mm]

#12 x 2" [M5x50] STAINLESS HEX HEAD SCREW (7 PER FRAME @ 12" [304mm] O.C.) (JKSS12)

BEAD OF EXTERIOR GRADE SEALANT (BY OTHERS)

REINF. EPDM VAPOR BARRIER (JL024-RVB) (OPTIONAL) NOTE: SET IN CONT. BED OF COMPATIBLE SEALANT (BY OTHERS)

18" [457mm]

POSITIVE PITCH

TELESCOPING ALUM SEISMIC ARMATURE w/ COMPRESSION SPRING FASTENING SYSTEM (PRE-INSTALLED)

CONT. ALUM LATERAL SLIDE ASSEMBLY (J6A651-1-F, J6A651-2-F) (CLEAR ANODIZED) (INSTALLED IN CONT. BEAD OF SEALANT)

COUNTER FLASHING AND COMPATIBLE SEALANT (BY OTHERS) (REF. STANDARD CURB DETAIL)

1/4-20 x 1" SS HEX HEAD SCREW WITH NEOPRENE WASHER AND SQUARE NUT. (JKSS31)

1" [25mm]  
8" [200mm] MAX

## 650C-A02-350

JOINT WIDTH		MOVEMENT			
		MINIMUM		MAXIMUM	
US	mm	US	mm	US	mm
14"	356	2 3/4"	70	28"	711

SPECIFY PANEL COLOR:

CLEAR ANO. (MNC)	ALUM. GRAY (AGT)
BONE WHITE (BNT)	DEEP GRAY (BGY)
OYSTER (CRT)	CHARCOAL (CNC)
BRONZE (JBR)	BLACK (BLK)

FINISH: CLEAR ANODIZED - ALUM

PROJECT:

CUSTOMER:

LOCATION:

APPLICATION - EXTERIOR  
ROOF/WALL CONCEALED PAN EXPANSION JOINT SYSTEM -

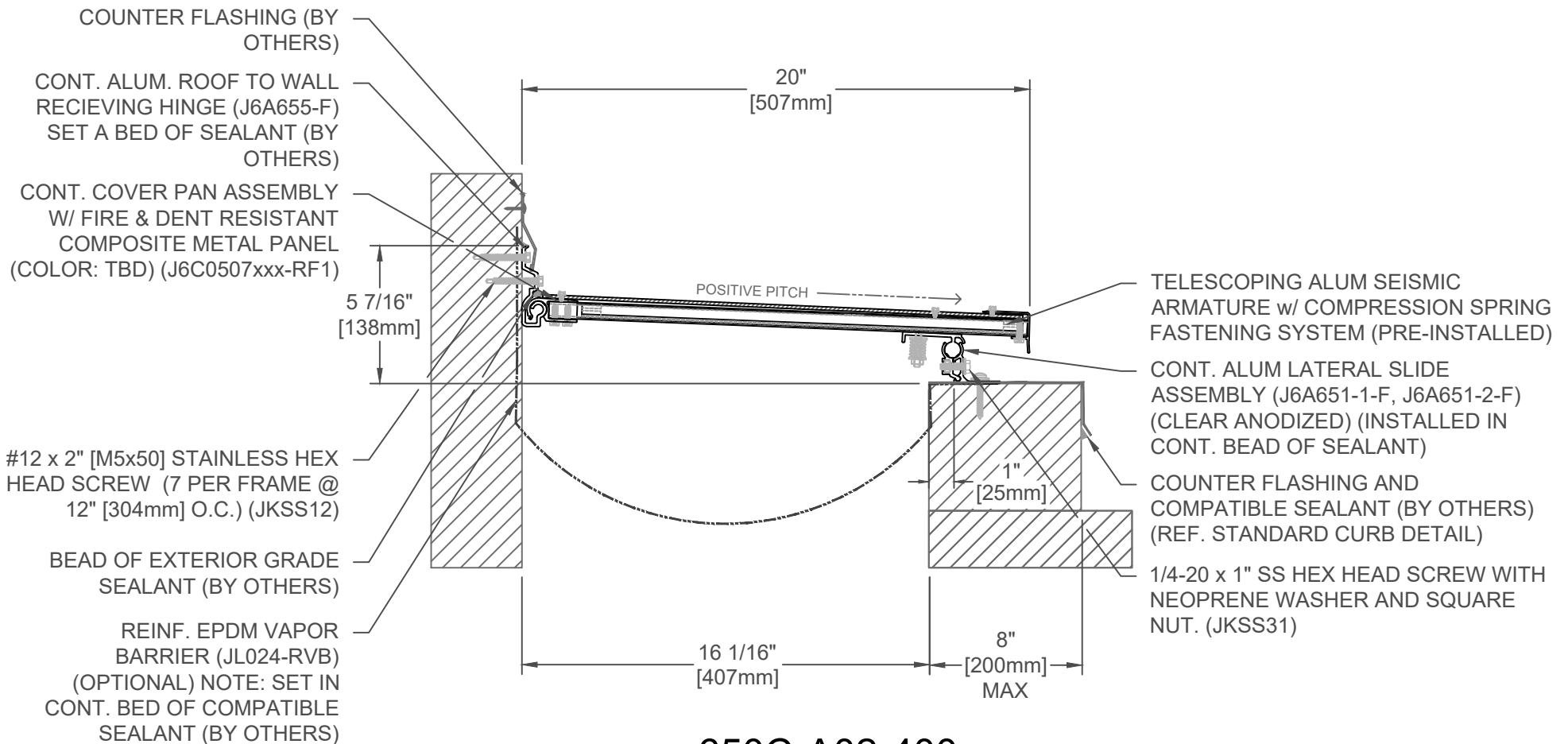
DATE: 12/8/23

SCALE: 1:4

DOC: CADJM.250/R2

**inpro.**

For More Information Visit: [Inprocorp.com](http://Inprocorp.com)



## 650C-A02-400

SPECIFY PANEL COLOR:	
CLEAR ANO. (MNC)	ALUM. GRAY (AGT)
BONE WHITE (BNT)	DEEP GRAY (BGY)
OYSTER (CRT)	CHARCOAL (CNC)
BRONZE (JBR)	BLACK (BLK)

JOINT WIDTH		MOVEMENT			
		MINIMUM		MAXIMUM	
US	mm	US	mm	US	mm
16"	406	2 3/4"	70	32"	813

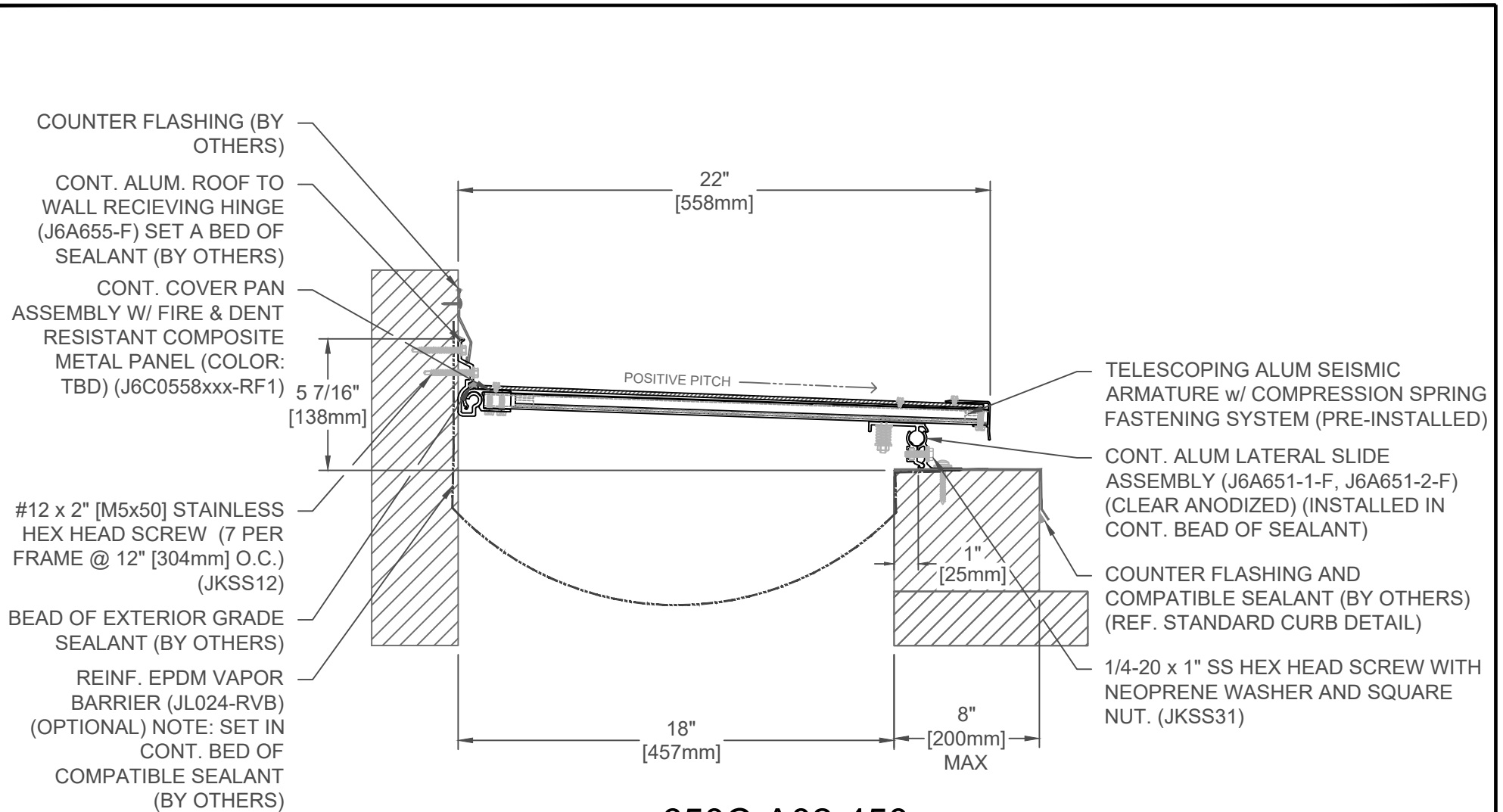
FINISH: CLEAR ANODIZED - ALUM
PROJECT:
CUSTOMER:
LOCATION:

APPLICATION - EXTERIOR  
ROOF/WALL CONCEALED PAN EXPANSION JOINT SYSTEM -

DATE: 12/8/23  
SCALE: 1:6  
DOC: CADJM.250/R2

**inpro.**

For More Information Visit: [Inprocorp.com](http://Inprocorp.com)



## 650C-A02-450

SPECIFY PANEL COLOR:		
CLEAR ANO. (MNC)		ALUM. GRAY (AGT)
BONE WHITE (BNT)		DEEP GRAY (BGY)
OYSTER (CRT)		CHARCOAL (CNC)
BRONZE (JBR)		BLACK (BLK)

JOINT WIDTH		MOVEMENT			
		MINIMUM		MAXIMUM	
US	mm	US	mm	US	mm
18"	457	2 3/4"	70	36"	914

FINISH: CLEAR ANODIZED - ALUM
PROJECT:
CUSTOMER:
LOCATION:

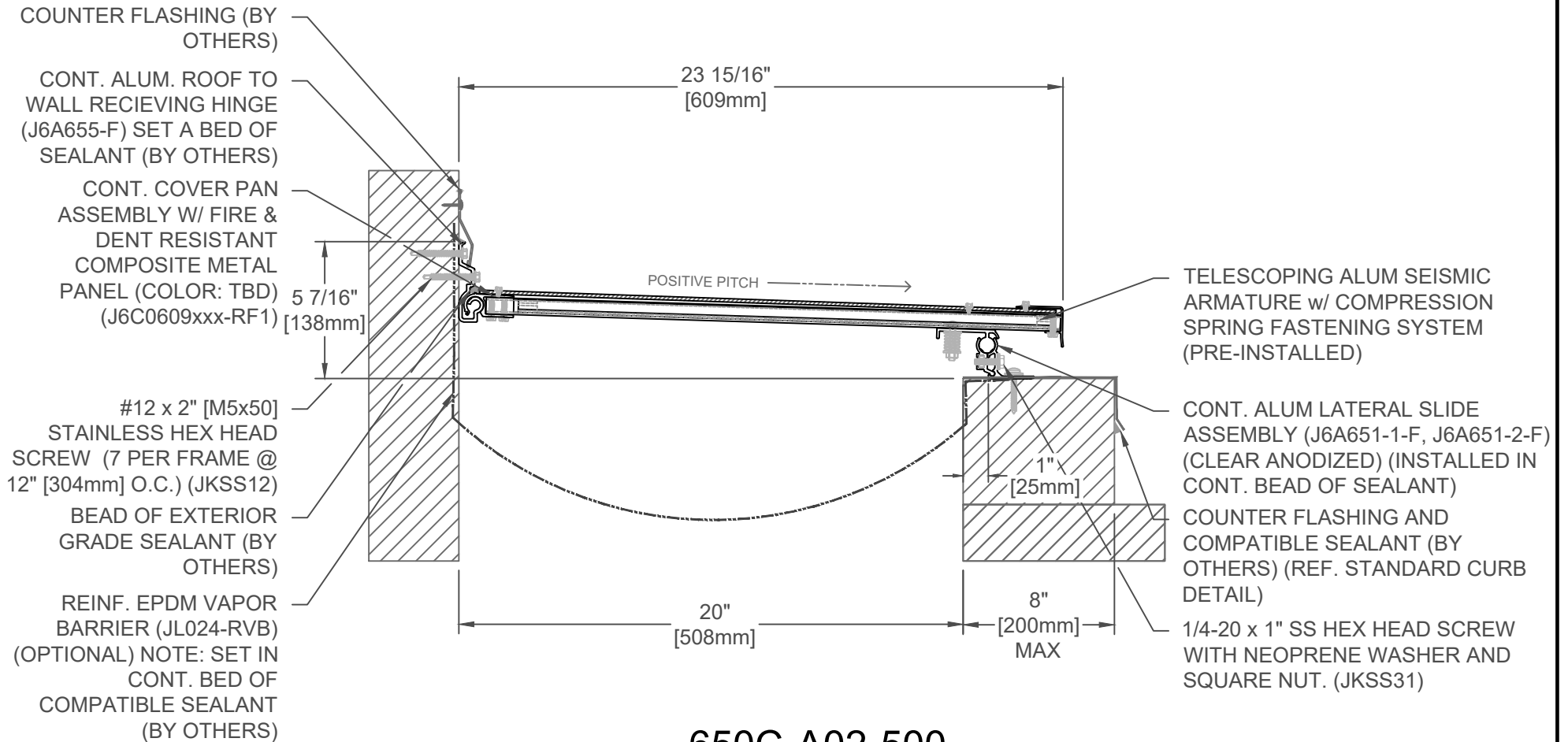
APPLICATION - EXTERIOR  
 ROOF/WALL CONCEALED PAN EXPANSION JOINT SYSTEM -

DATE:	12/8/23
SCALE:	1:6
DOC:	CADJM.250/R2

**inpro.**

For More Information Visit: [Inprocorp.com](http://Inprocorp.com)





## 650C-A02-500

SPECIFY PANEL COLOR:		
CLEAR ANO. (MNC)		ALUM. GRAY (AGT)
BONE WHITE (BNT)		DEEP GRAY (BGY)
OYSTER (CRT)		CHARCOAL (CNC)
BRONZE (JBR)		BLACK (BLK)

JOINT WIDTH		MOVEMENT			
		MINIMUM		MAXIMUM	
US	mm	US	mm	US	mm
20"	508	2 3/4"	70	40"	1016

FINISH: CLEAR ANODIZED - ALUM

PROJECT:

CUSTOMER:

LOCATION:

APPLICATION - EXTERIOR  
ROOF/WALL CONCEALED PAN EXPANSION JOINT SYSTEM -

DATE: 12/8/23

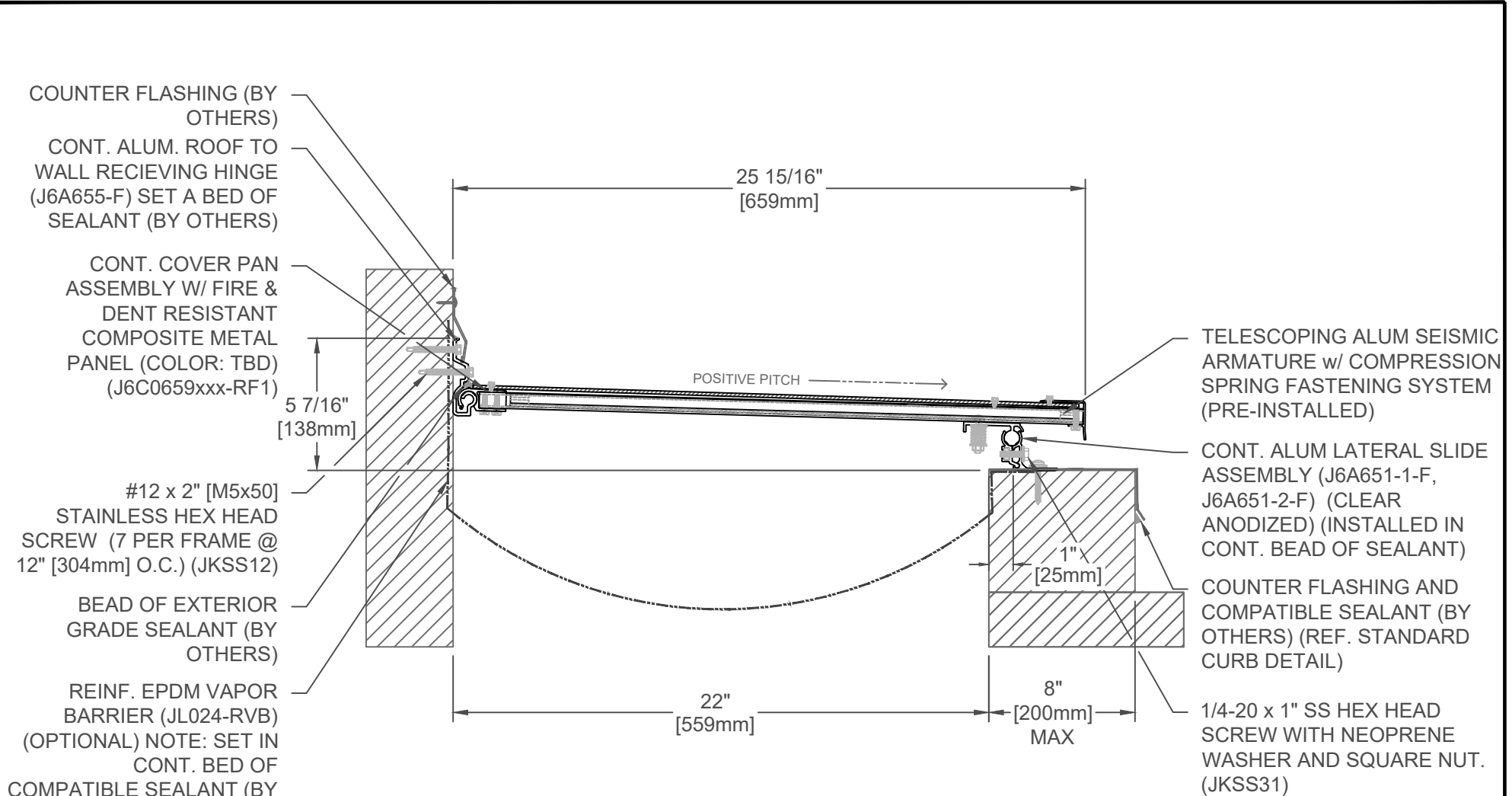
SCALE: 1:6

DOC: CADJM.250/R2

**inpro.**

For More Information Visit: [Inprocorp.com](http://Inprocorp.com)





## 650C-A02-550

SPECIFY PANEL COLOR:	
CLEAR ANO. (MNC)	ALUM. GRAY (AGT)
BONE WHITE (BNT)	DEEP GRAY (BGY)
OYSTER (CRT)	CHARCOAL (CNC)
BRONZE (JBR)	BLACK (BLK)

JOINT WIDTH		MOVEMENT			
		MINIMUM		MAXIMUM	
US	mm	US	mm	US	mm
22"	559	2 3/4"	70	44"	1118

FINISH: CLEAR ANODIZED - ALUM

PROJECT:

CUSTOMER:

LOCATION:

APPLICATION - EXTERIOR  
 ROOF/WALL CONCEALED PAN EXPANSION JOINT SYSTEM -

DATE: 12/8/23

SCALE: 1:6

DOC: CADJM.250/R2



COUNTER FLASHING  
(BY OTHERS)

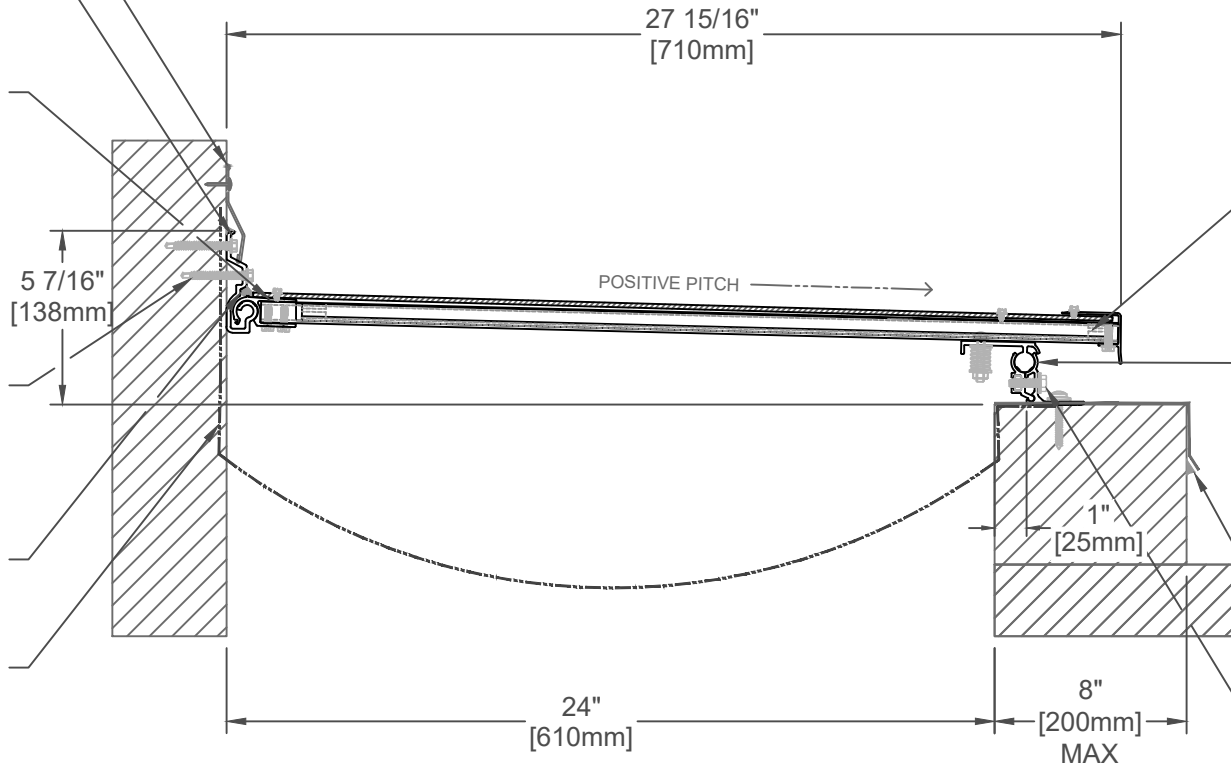
CONT. ALUM. ROOF  
TO WALL RECIEVING  
HINGE (J6A655-F) SET  
A BED OF SEALANT  
(BY OTHERS)

CONT. COVER PAN  
ASSEMBLY W/ FIRE &  
DENT RESISTANT  
COMPOSITE METAL  
PANEL (COLOR: TBD)  
(J6C0710xxx-RF1)

#12 x 2" [M5x50]  
STAINLESS HEX  
HEAD SCREW (7 PER  
FRAME @ 12" [304mm]  
O.C.) (JKSS12)

BEAD OF EXTERIOR  
GRADE SEALANT (BY  
OTHERS)

REINF. EPDM VAPOR  
BARRIER (JL024-RVB)  
(OPTIONAL) NOTE:  
SET IN CONT. BED OF  
COMPATIBLE  
SEALANT (BY  
OTHERS)



TELESCOPING ALUM SEISMIC  
ARMATURE w/ COMPRESSION  
SPRING FASTENING SYSTEM  
(PRE-INSTALLED)

CONT. ALUM LATERAL SLIDE  
ASSEMBLY (J6A651-1-F,  
J6A651-2-F) (CLEAR  
ANODIZED) (INSTALLED IN  
CONT. BEAD OF SEALANT)

COUNTER FLASHING AND  
COMPATIBLE SEALANT (BY  
OTHERS) (REF. STANDARD  
CURB DETAIL)

1/4-20 x 1" SS HEX HEAD  
SCREW WITH NEOPRENE  
WASHER AND SQUARE NUT.  
(JKSS31)

## 650C-A02-600

SPECIFY PANEL COLOR:	
CLEAR ANO. (MNC)	ALUM. GRAY (AGT)
BONE WHITE (BNT)	DEEP GRAY (BGY)
OYSTER (CRT)	CHARCOAL (CNC)
BRONZE (JBR)	BLACK (BLK)

JOINT WIDTH		MOVEMENT			
		MINIMUM		MAXIMUM	
US	mm	US	mm	US	mm
24"	610	2 3/4"	70	48"	1219

FINISH: CLEAR ANODIZED - ALUM

PROJECT:

CUSTOMER:

LOCATION:

APPLICATION - EXTERIOR  
ROOF/WALL CONCEALED PAN EXPANSION JOINT SYSTEM -

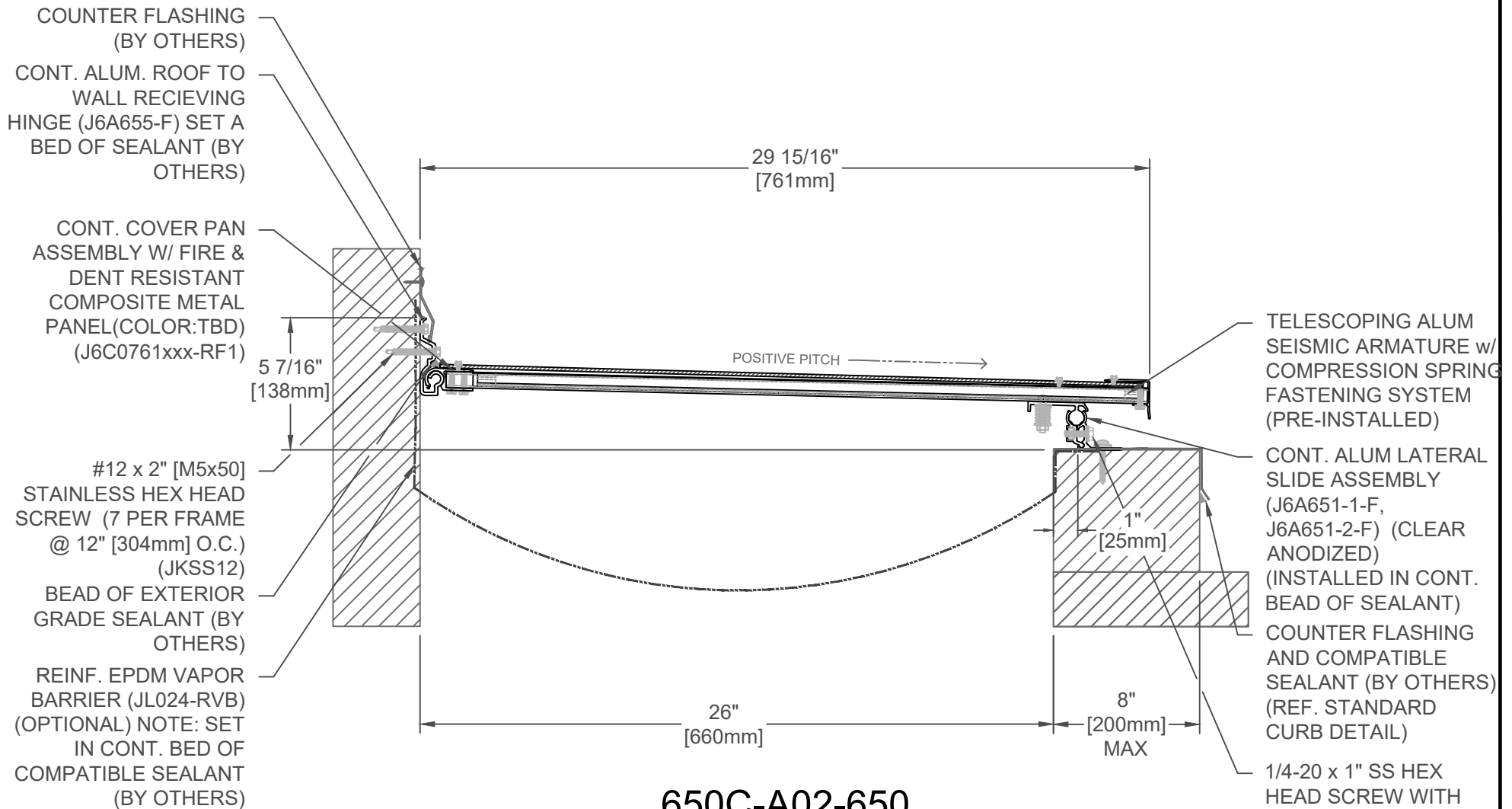
DATE: 12/8/23

SCALE: 1:6

DOC: CADJM.250/R2



For More Information Visit: [Inprocorp.com](http://Inprocorp.com)



## 650C-A02-650

SPECIFY PANEL COLOR:		
CLEAR ANO. (MNC)		ALUM. GRAY (AGT)
BONE WHITE (BNT)		DEEP GRAY (BGY)
OYSTER (CRT)		CHARCOAL (CNC)
BRONZE (JBR)		BLACK (BLK)

JOINT WIDTH		MOVEMENT			
		MINIMUM		MAXIMUM	
US	mm	US	mm	US	mm
26"	660	2 3/4"	70	52"	1321

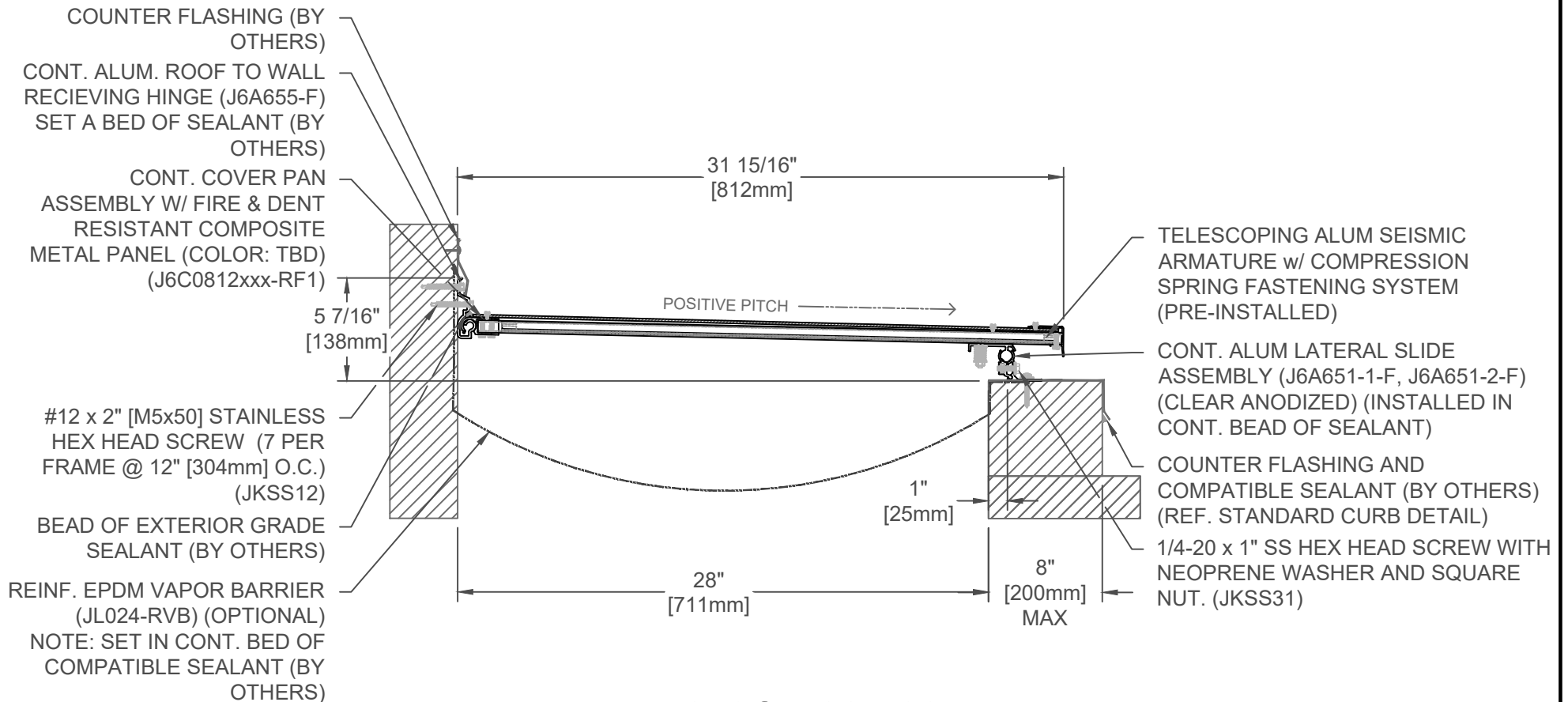
FINISH: CLEAR ANODIZED - ALUM
PROJECT:
CUSTOMER:
LOCATION:

APPLICATION - EXTERIOR  
ROOF/WALL CONCEALED PAN EXPANSION JOINT SYSTEM -

DATE:	12/8/23
SCALE:	1:6
DOC:	CADJM.250/R2

**inpro.**

For More Information Visit: [Inprocorp.com](http://Inprocorp.com)



## 650C-A02-700

SPECIFY PANEL COLOR:		
CLEAR ANO. (MNC)		ALUM. GRAY (AGT)
BONE WHITE (BNT)		DEEP GRAY (BGY)
OYSTER (CRT)		CHARCOAL (CNC)
BRONZE (JBR)		BLACK (BLK)

JOINT WIDTH		MOVEMENT			
		MINIMUM		MAXIMUM	
US	mm	US	mm	US	mm
28"	711	2 3/4"	70	56	1422

FINISH: CLEAR ANODIZED - ALUM

PROJECT:

CUSTOMER:

LOCATION:

APPLICATION - EXTERIOR  
ROOF/WALL CONCEALED PAN EXPANSION JOINT SYSTEM

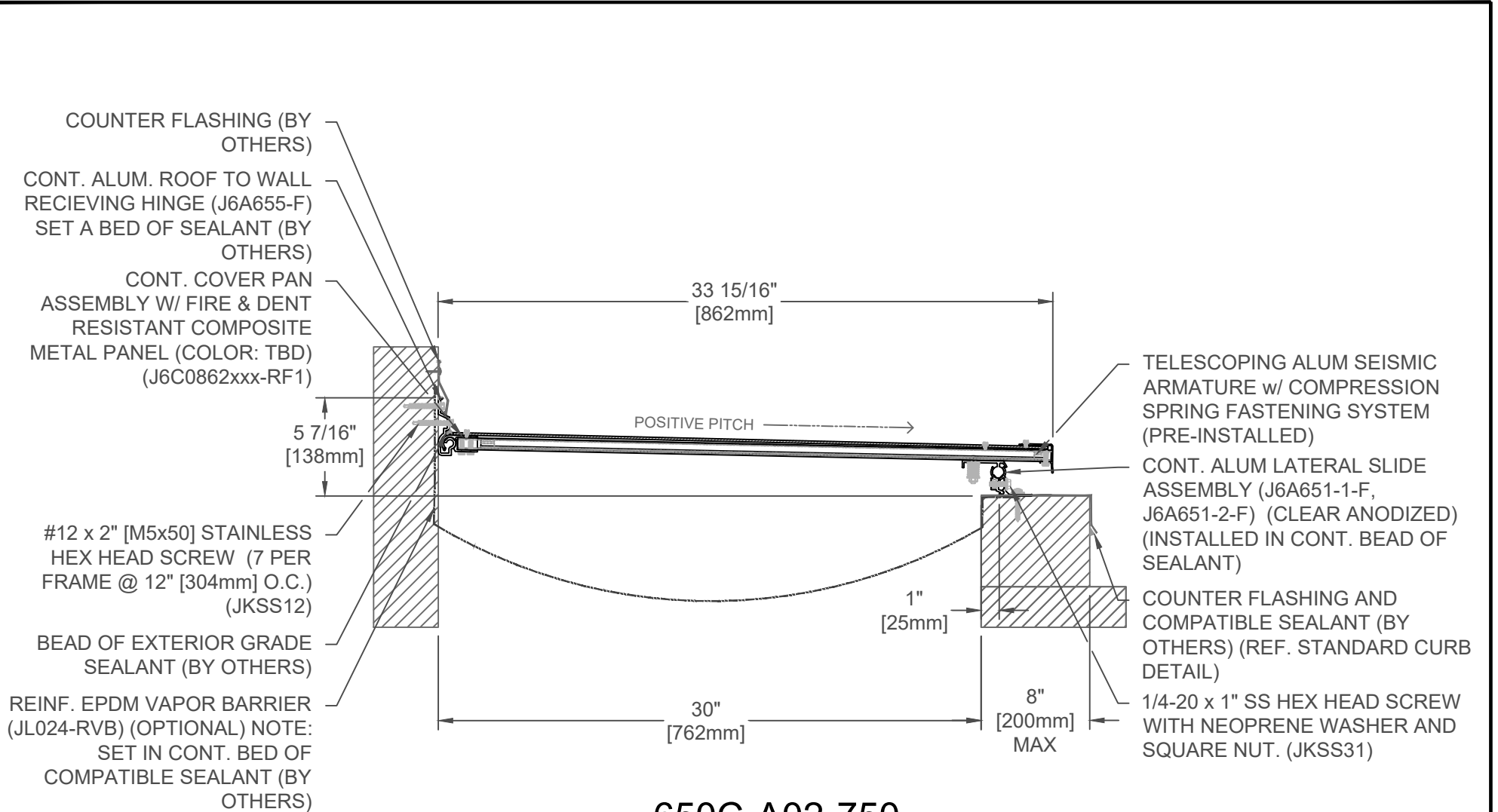
DATE: 12/8/23

SCALE: 1:8

DOC: CADJM.250/R2

**inpro.**

For More Information Visit: [Inprocorp.com](http://Inprocorp.com)



## 650C-A02-750

SPECIFY PANEL COLOR:		
CLEAR ANO. (MNC)		ALUM. GRAY (AGT)
BONE WHITE (BNT)		DEEP GRAY (BGY)
OYSTER (CRT)		CHARCOAL (CNC)
BRONZE (JBR)		BLACK (BLK)

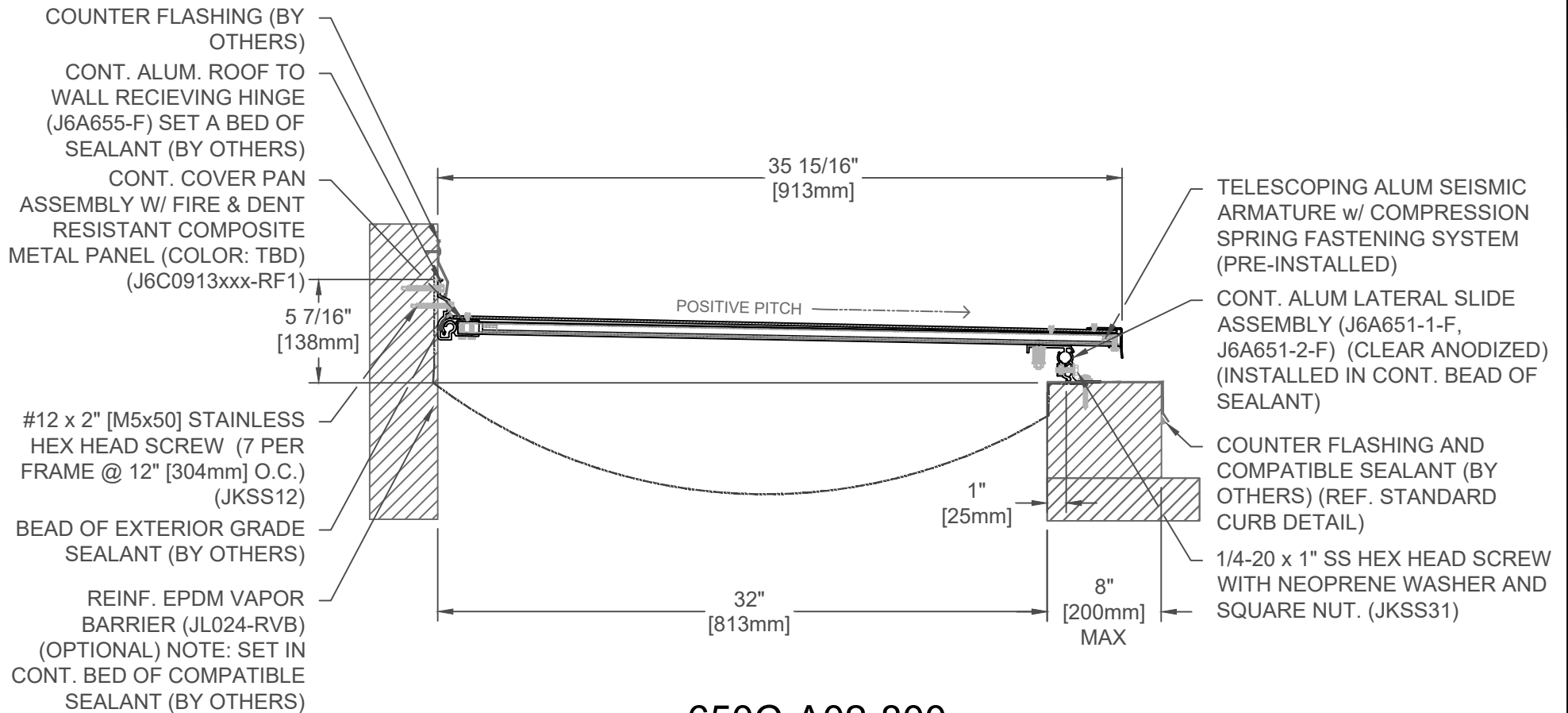
JOINT WIDTH		MOVEMENT			
		MINIMUM		MAXIMUM	
US	mm	US	mm	US	mm
30"	762	2 3/4"	70	60"	1524

FINISH: CLEAR ANODIZED - ALUM
PROJECT:
CUSTOMER:
LOCATION:

APPLICATION - EXTERIOR  
 ROOF/WALL CONCEALED PAN EXPANSION JOINT SYSTEM

DATE:	12/8/23
SCALE:	1:8
DOC:	CADJM.250/R2

**inpro.**  
 For More Information Visit: [Inprocorp.com](http://Inprocorp.com)



## 650C-A02-800

SPECIFY PANEL COLOR:		
CLEAR ANO. (MNC)		ALUM. GRAY (AGT)
BONE WHITE (BNT)		DEEP GRAY (BGY)
OYSTER (CRT)		CHARCOAL (CNC)
BRONZE (JBR)		BLACK (BLK)

JOINT WIDTH		MOVEMENT			
		MINIMUM		MAXIMUM	
US	mm	US	mm	US	mm
32"	813	2 3/4"	70	64"	1626

FINISH: CLEAR ANODIZED - ALUM

PROJECT:

CUSTOMER:

LOCATION:

APPLICATION - EXTERIOR  
ROOF/WALL CONCEALED PAN EXPANSION JOINT SYSTEM

DATE: 12/8/23

SCALE: 1:8

DOC: CADJM.250/R2

**inpro.**

For More Information Visit: [Inprocorp.com](http://Inprocorp.com)