

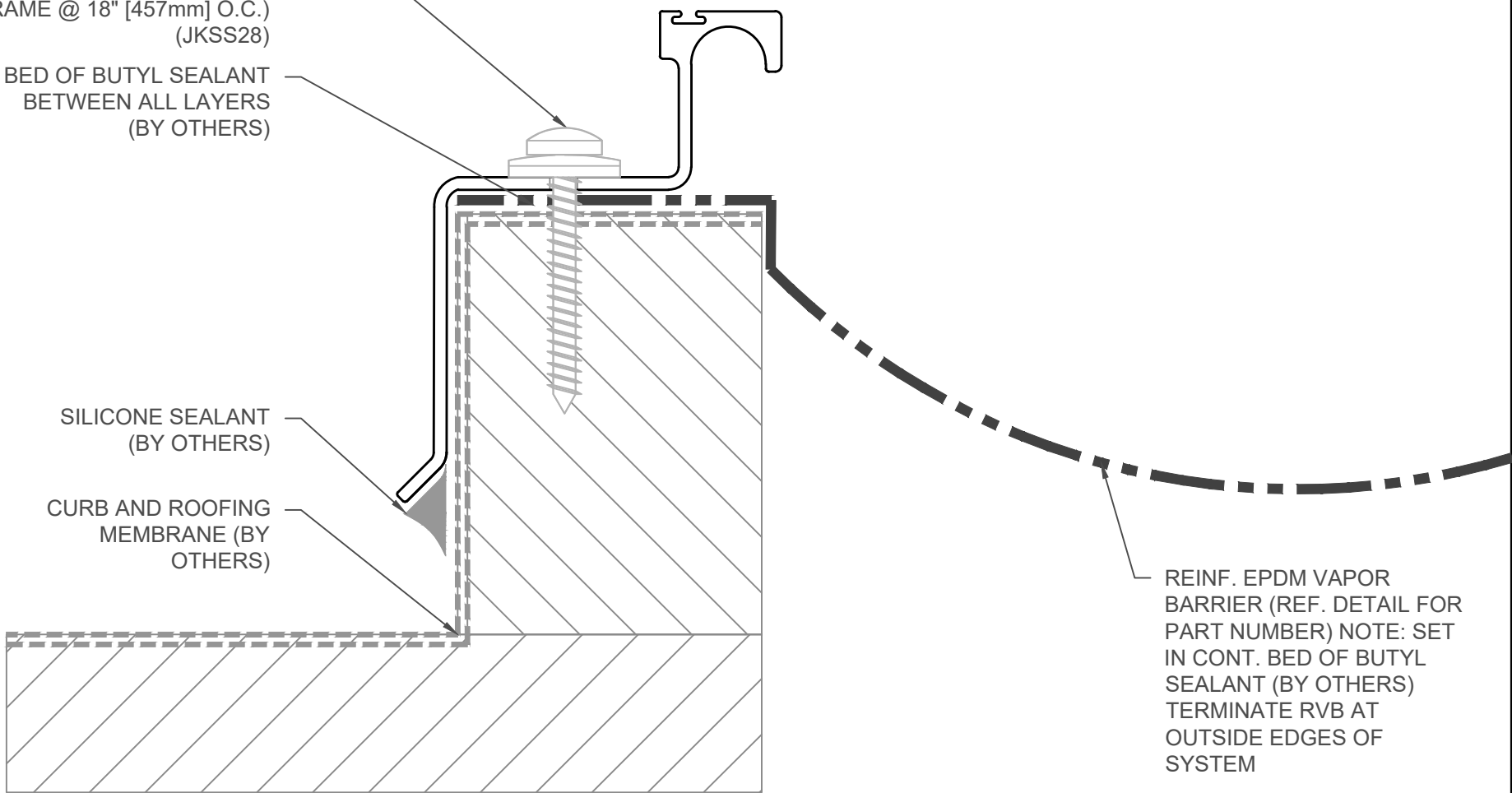
#12 x 1 1/2" [M5x38]  
 STAINLESS PAN HEAD  
 SCREW THRU NEOPRENE  
 WEATHER WASHER (7 PER  
 FRAME @ 18" [457mm] O.C.)  
 (JKSS28)

BED OF BUTYL SEALANT  
 BETWEEN ALL LAYERS  
 (BY OTHERS)

SILICONE SEALANT  
 (BY OTHERS)

CURB AND ROOFING  
 MEMBRANE (BY  
 OTHERS)

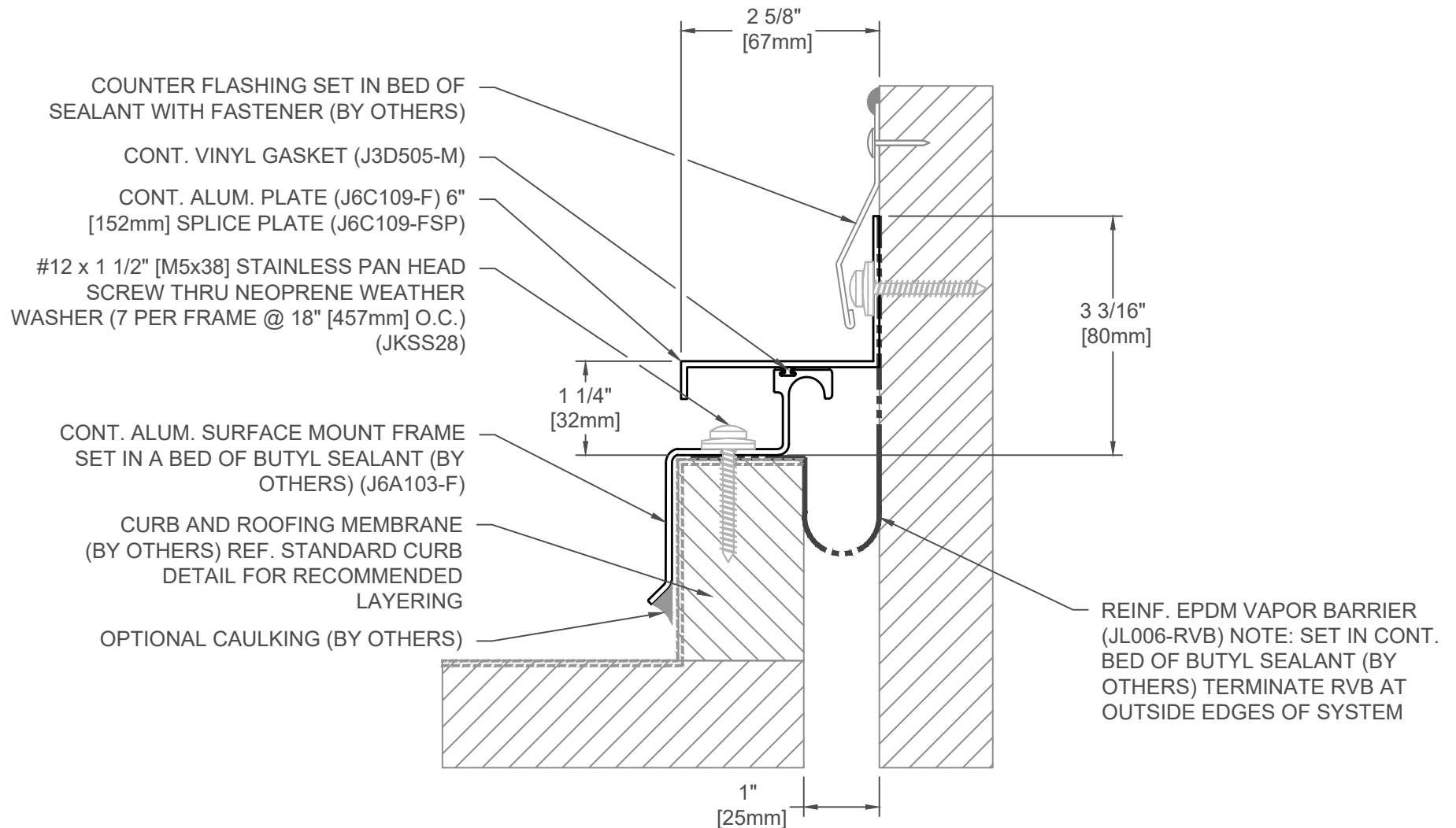
REINF. EPDM VAPOR  
 BARRIER (REF. DETAIL FOR  
 PART NUMBER) NOTE: SET  
 IN CONT. BED OF BUTYL  
 SEALANT (BY OTHERS)  
 TERMINATE RVB AT  
 OUTSIDE EDGES OF  
 SYSTEM



FINISH: MILL
PROJECT:
CUSTOMER:
LOCATION:

691 GENERAL CURB DETAIL:  
 WITH FRAME INSTALLED ON CURB

DATE:	7-21-15
SCALE:	1:2
DOC:	



### 691-A02-025

JOINT WIDTH		MOVEMENT ±			
		HORIZONTAL		VERTICAL	
US	mm	US	mm	US	mm
1"	25	1/2"	13	1/2"	13

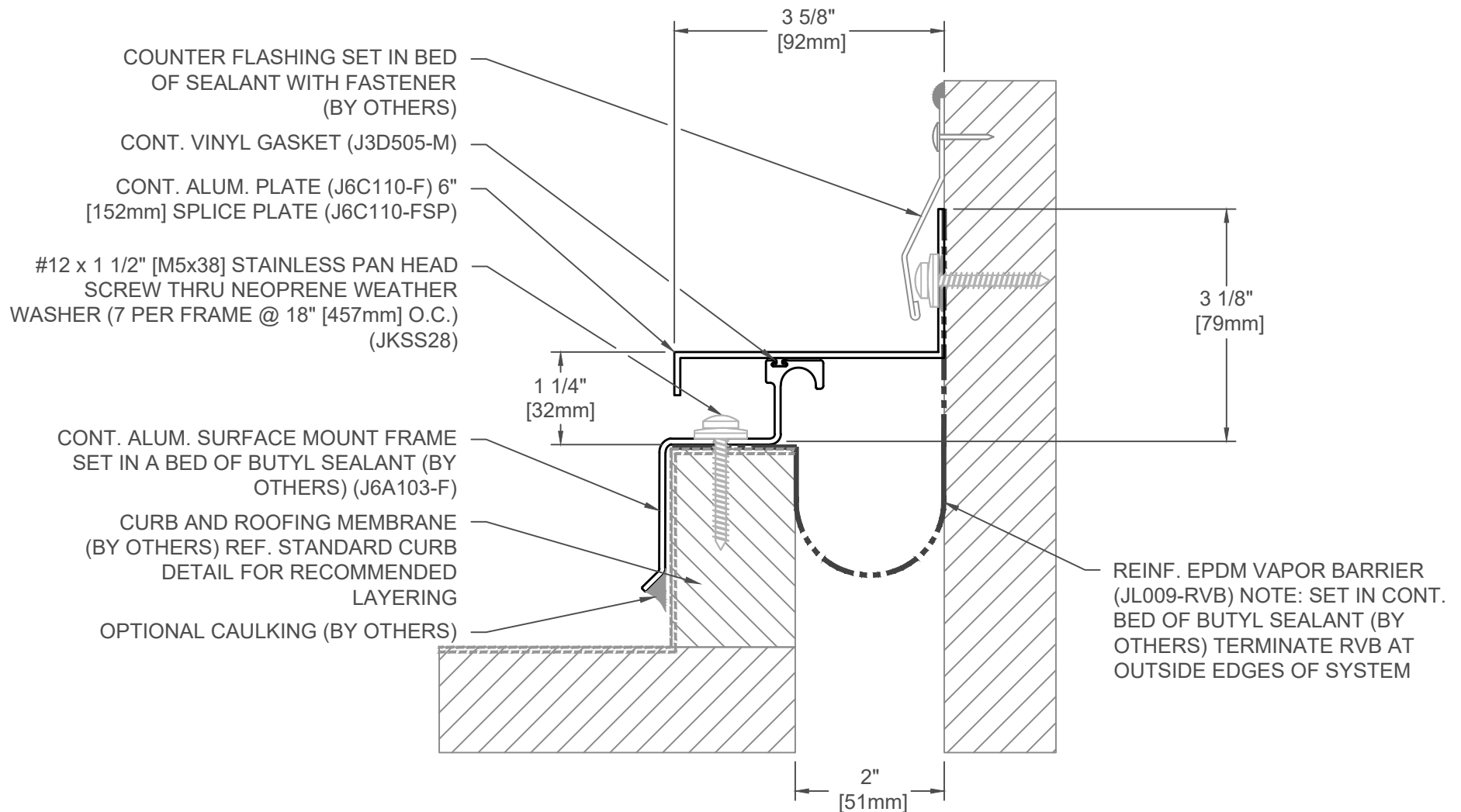
FINISH: MILL
PROJECT:
CUSTOMER:
LOCATION:

APPLICATION-  
CURB MOUNTED CENTERING BAR  
ROOF/WALL CONDITION

DATE:	7-22-15
SCALE:	1:2
DOC:	CADJM.004/R7

**inpro.**

For More Information Visit: [Inprocorp.com](http://Inprocorp.com)



### 691-A02-050

JOINT WIDTH		MOVEMENT ±			
		HORIZONTAL		VERTICAL	
US	mm	US	mm	US	mm
2"	51	1"	25	1"	25

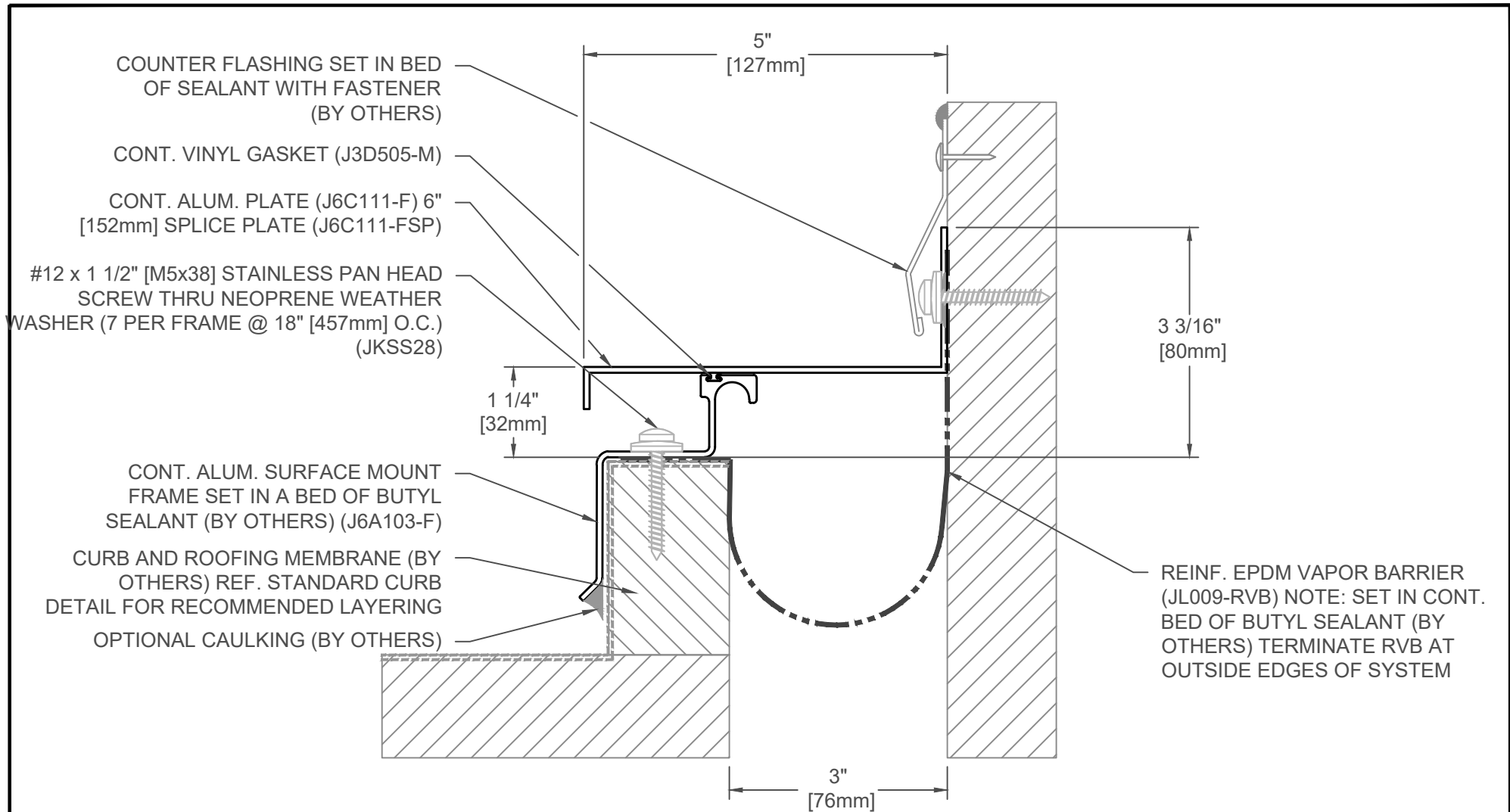
FINISH: MILL
PROJECT:
CUSTOMER:
LOCATION:

APPLICATION-  
CURB MOUNTED CENTERING BAR  
ROOF/WALL CONDITION

DATE:	4-13-05
SCALE:	1:2
DOC:	CADJM.004/R7

**inpro.**

For More Information Visit: [Inprocorp.com](http://Inprocorp.com)



### 691-A02-075

JOINT WIDTH		MOVEMENT ±			
		HORIZONTAL		VERTICAL	
US	mm	US	mm	US	mm
3"	76	1-1/2"	38	1-1/2"	38

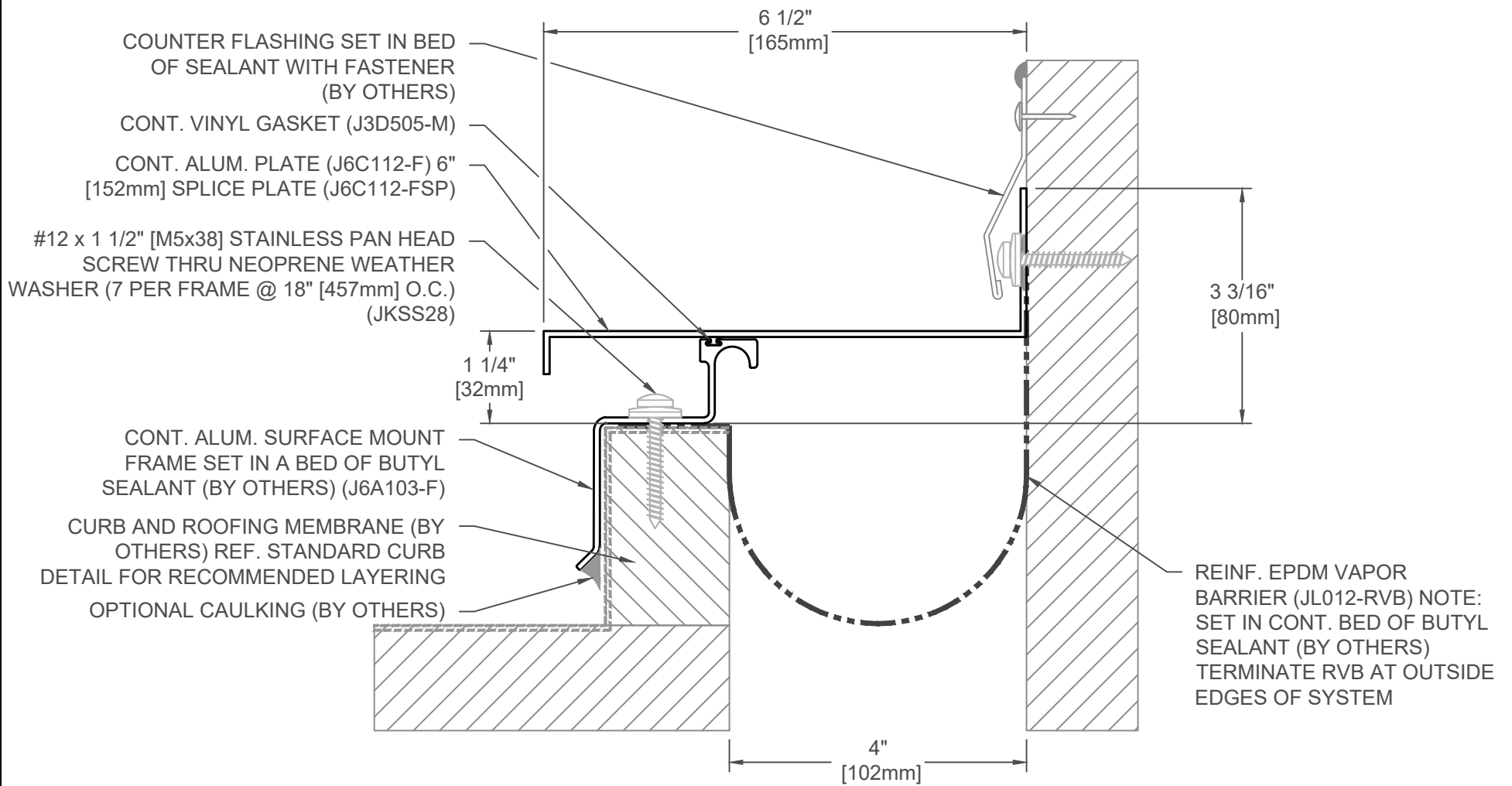
FINISH: MILL
PROJECT:
CUSTOMER:
LOCATION:

APPLICATION-  
CURB MOUNTED CENTERING BAR  
ROOF/WALL CONDITION

DATE:	4-13-05
SCALE:	1:2
DOC:	CADJM.004/R7

**inpro.**

For More Information Visit: [Inprocorp.com](http://Inprocorp.com)



### 691-A02-100

JOINT WIDTH		MOVEMENT ±			
		HORIZONTAL		VERTICAL	
US	mm	US	mm	US	mm
4"	102	2"	51	2"	51

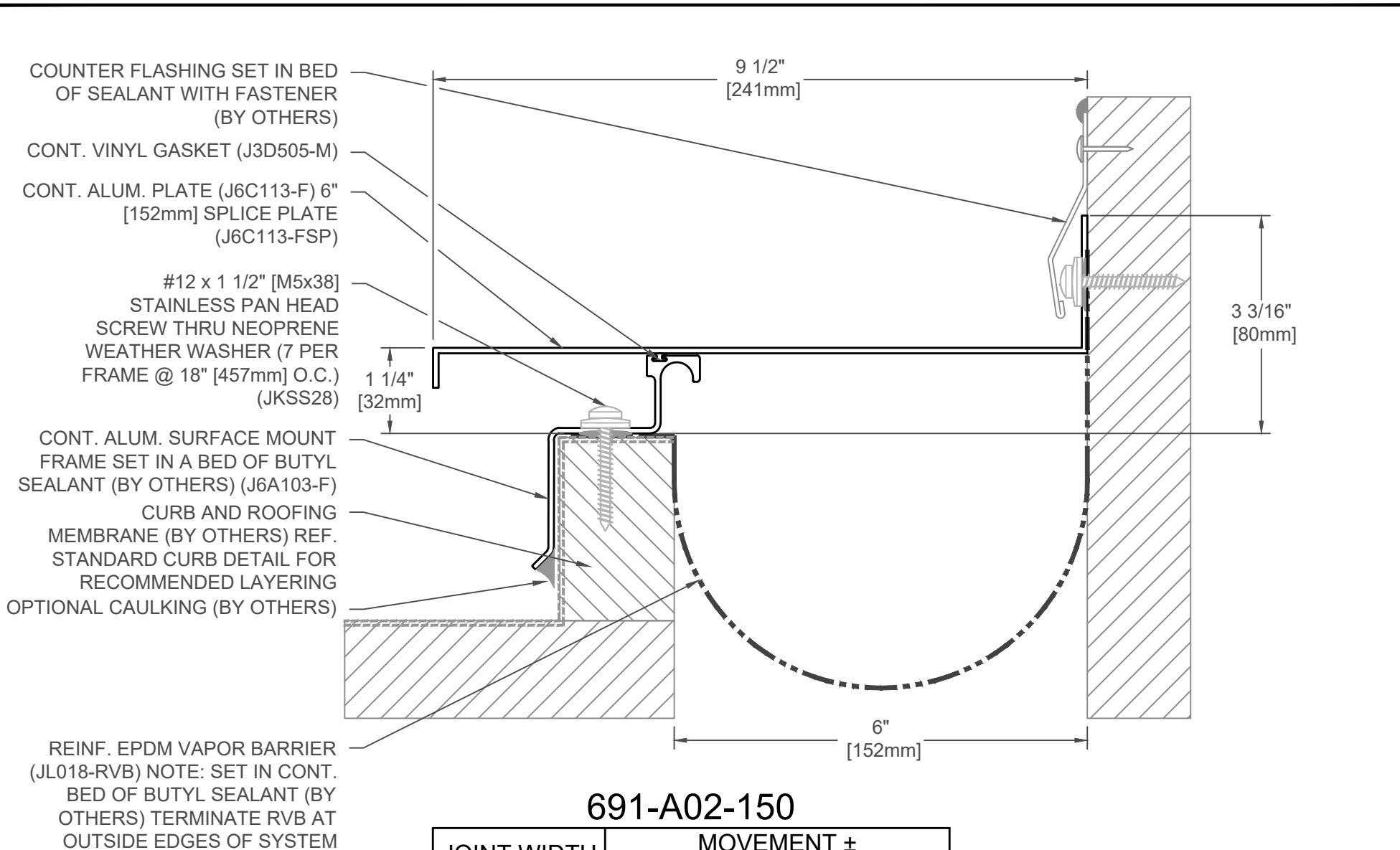
FINISH: MILL
PROJECT:
CUSTOMER:
LOCATION:

APPLICATION-  
CURB MOUNTED CENTERING BAR  
ROOF/WALL CONDITION

DATE:	4-13-05
SCALE:	1:2
DOC:	CADJM.004/R7

**inpro.**

For More Information Visit: [Inprocorp.com](http://Inprocorp.com)



### 691-A02-150

JOINT WIDTH		MOVEMENT ±			
		HORIZONTAL		VERTICAL	
US	mm	US	mm	US	mm
6"	152	3"	76	3"	76

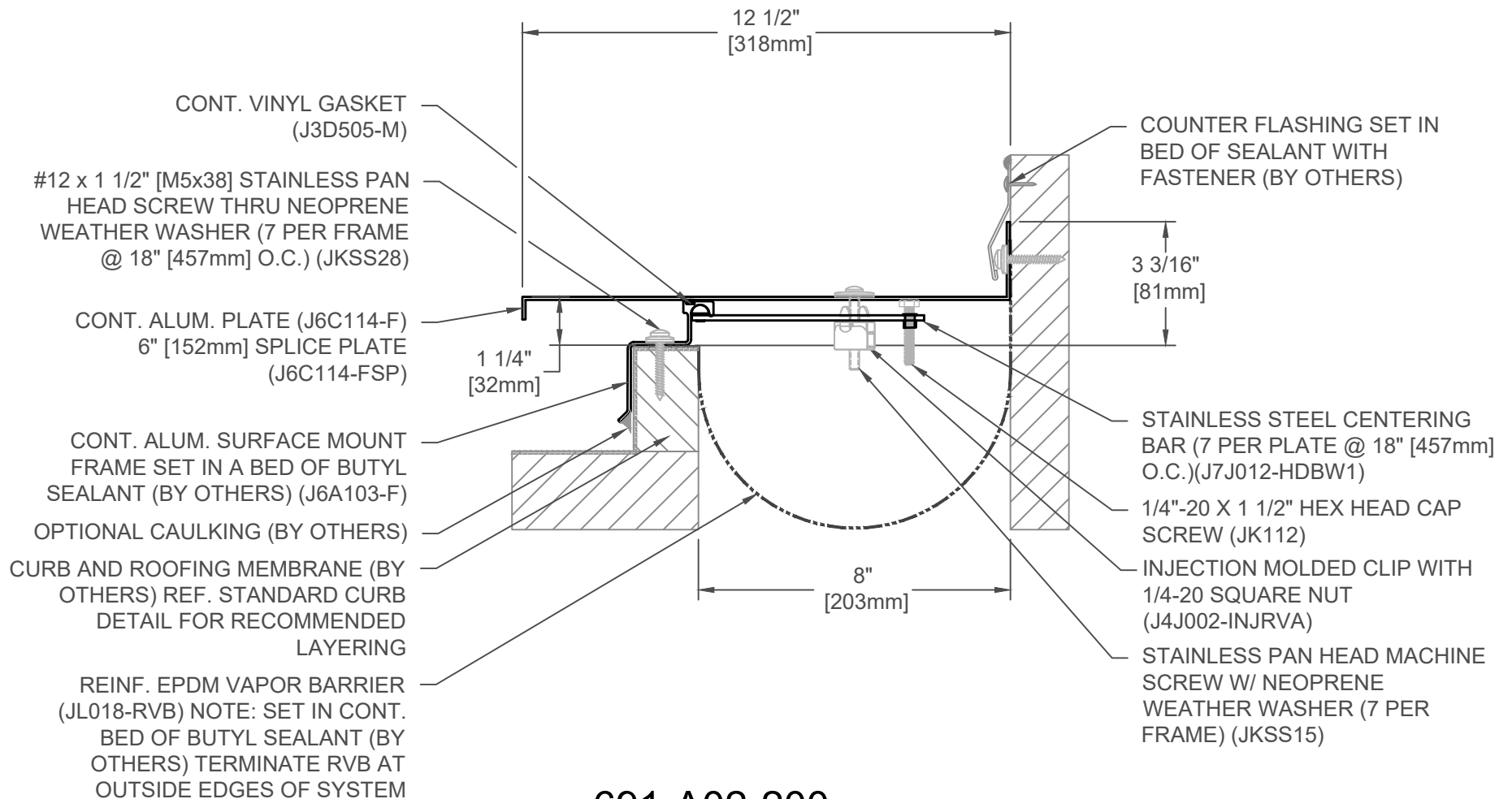
FINISH: MILL
PROJECT:
CUSTOMER:
LOCATION:

APPLICATION-  
CURB MOUNTED CENTERING BAR  
ROOF/WALL CONDITION

DATE:	4-13-05
SCALE:	1:2
DOC:	CADJM.004/R7

**inpro.**

For More Information Visit: [Inprocorp.com](http://Inprocorp.com)



### 691-A02-200

JOINT WIDTH		MOVEMENT ±			
US	mm	HORIZONTAL		VERTICAL	
US	mm	US	mm	US	mm
8"	203	4"	102	4"	102

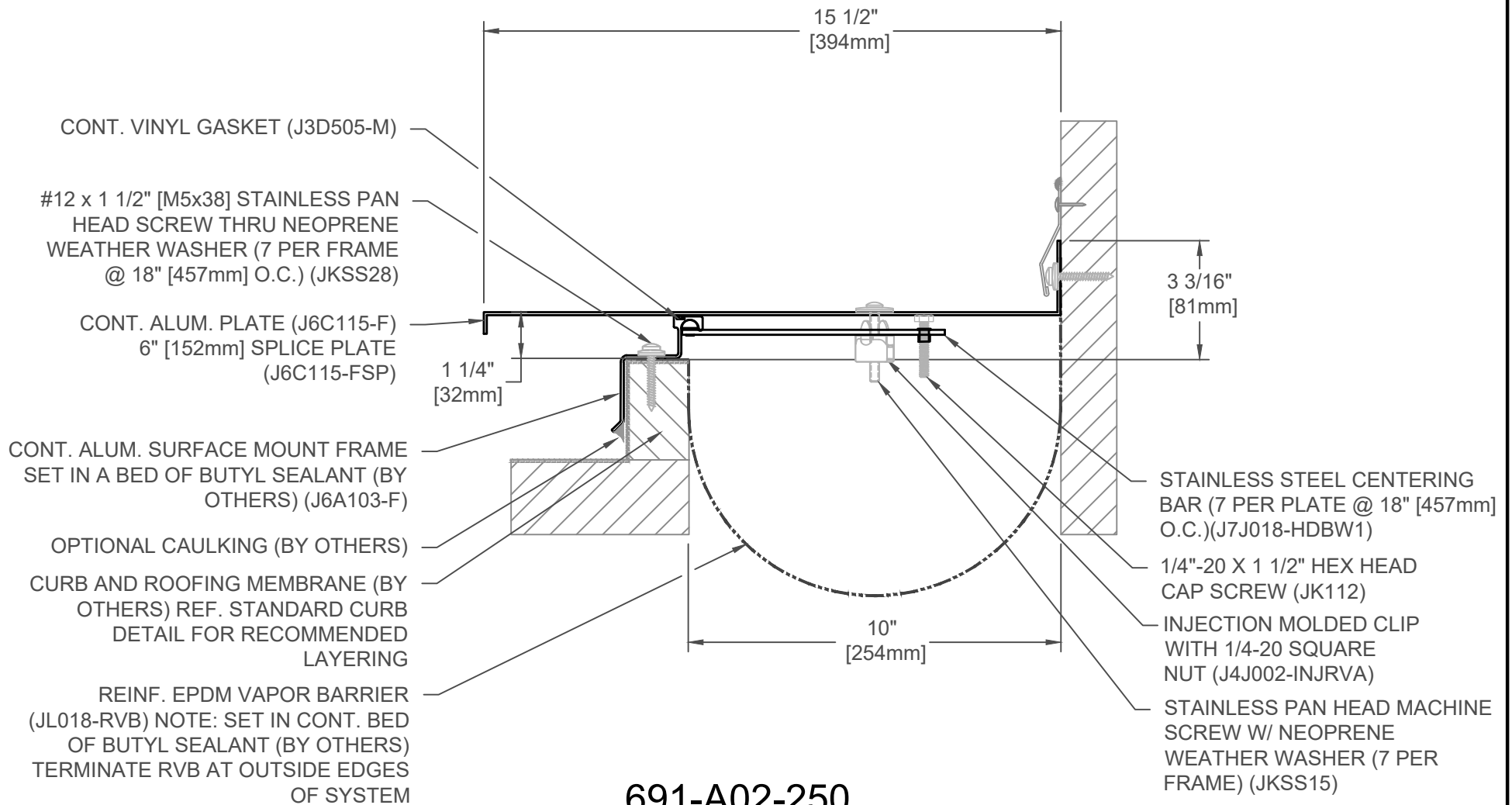
FINISH: MILL
PROJECT:
CUSTOMER:
LOCATION:

APPLICATION-  
CURB MOUNTED CENTERING BAR  
ROOF/WALL CONDITION

DATE:	4-13-05
SCALE:	1:4
DOC:	CADJM.004/R7

**inpro.**

For More Information Visit: [Inprocorp.com](http://Inprocorp.com)



## 691-A02-250

JOINT WIDTH		MOVEMENT ±			
		HORIZONTAL		VERTICAL	
US	mm	US	mm	US	mm
10"	254	5"	127	5"	127

FINISH: MILL
PROJECT:
CUSTOMER:
LOCATION:

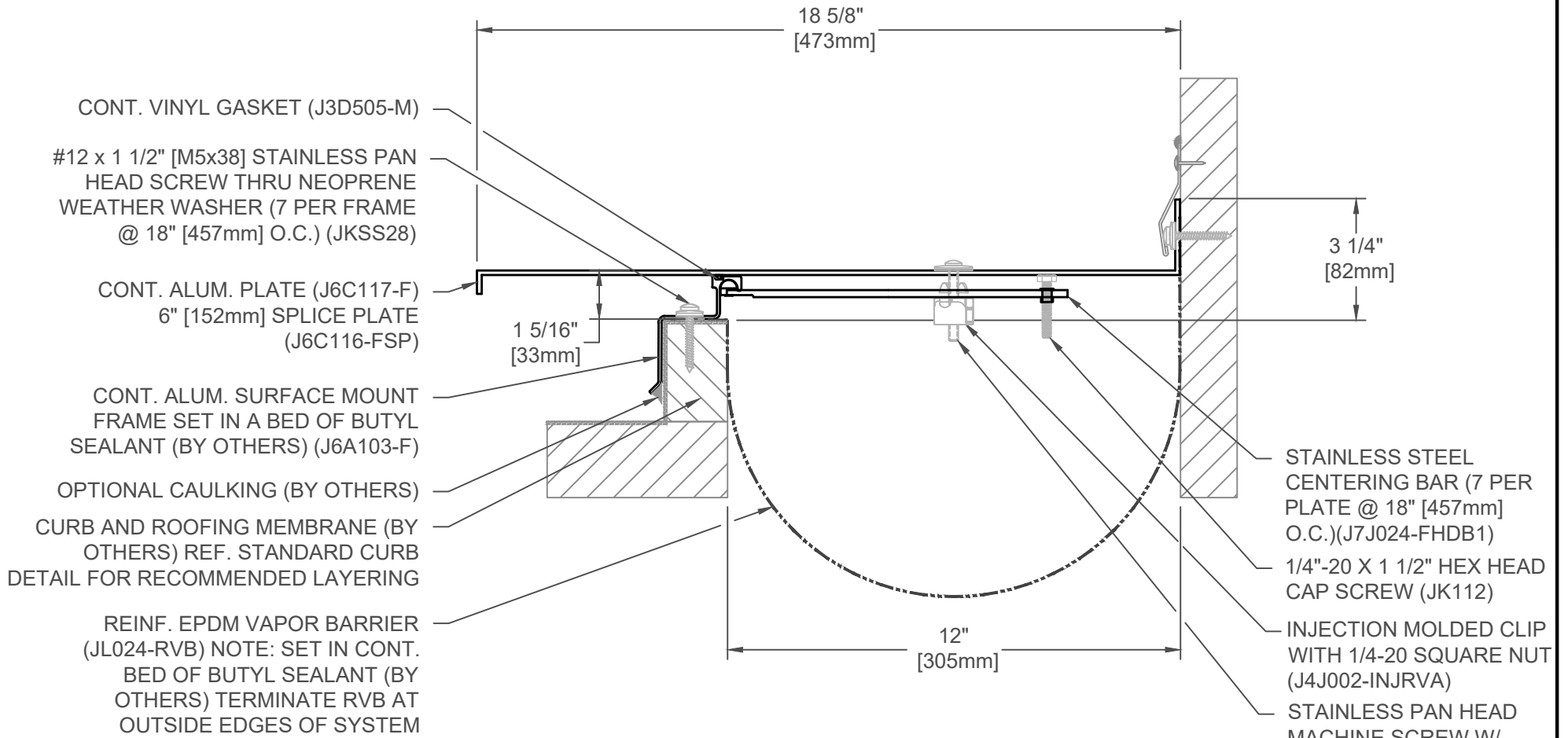
APPLICATION-  
CURB MOUNTED CENTERING BAR  
ROOF/WALL CONDITION

DATE:	12-7-16
SCALE:	1:4
DOC:	CADJM.004/R7

**inpro.**

For More Information Visit: [Inprocorp.com](http://Inprocorp.com)





### 691-A02-300

JOINT WIDTH		MOVEMENT ±			
US	mm	HORIZONTAL		VERTICAL	
US	mm	US	mm	US	mm
12"	305	6"	152	6"	152

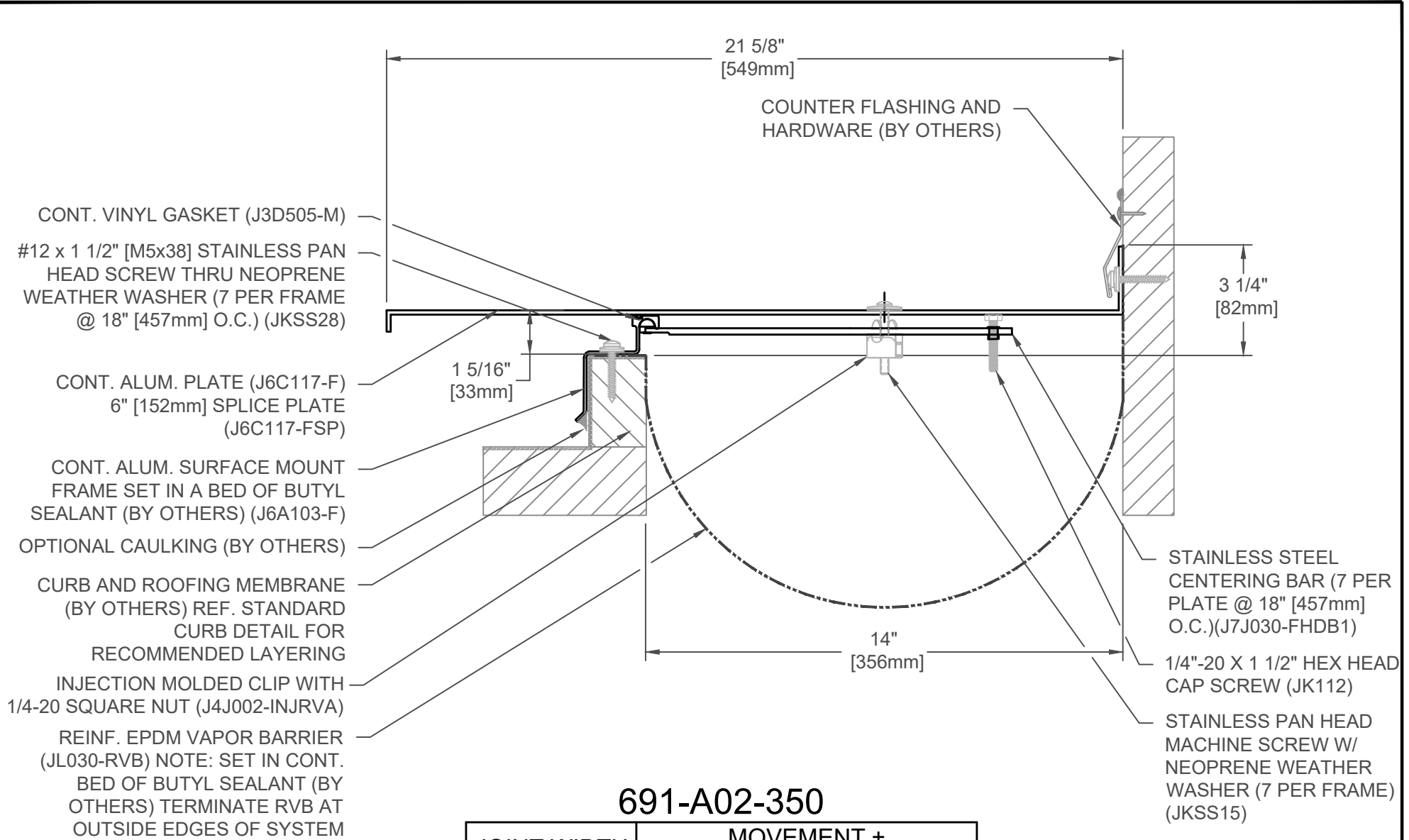
FINISH: MILL
PROJECT:
CUSTOMER:
LOCATION:

APPLICATION-  
CURB MOUNTED CENTERING BAR  
ROOF/WALL CONDITION

DATE:	4-13-05
SCALE:	1:4
DOC:	CADJM.004/R7

**inpro.**

For More Information Visit: [Inprocorp.com](http://Inprocorp.com)



### 691-A02-350

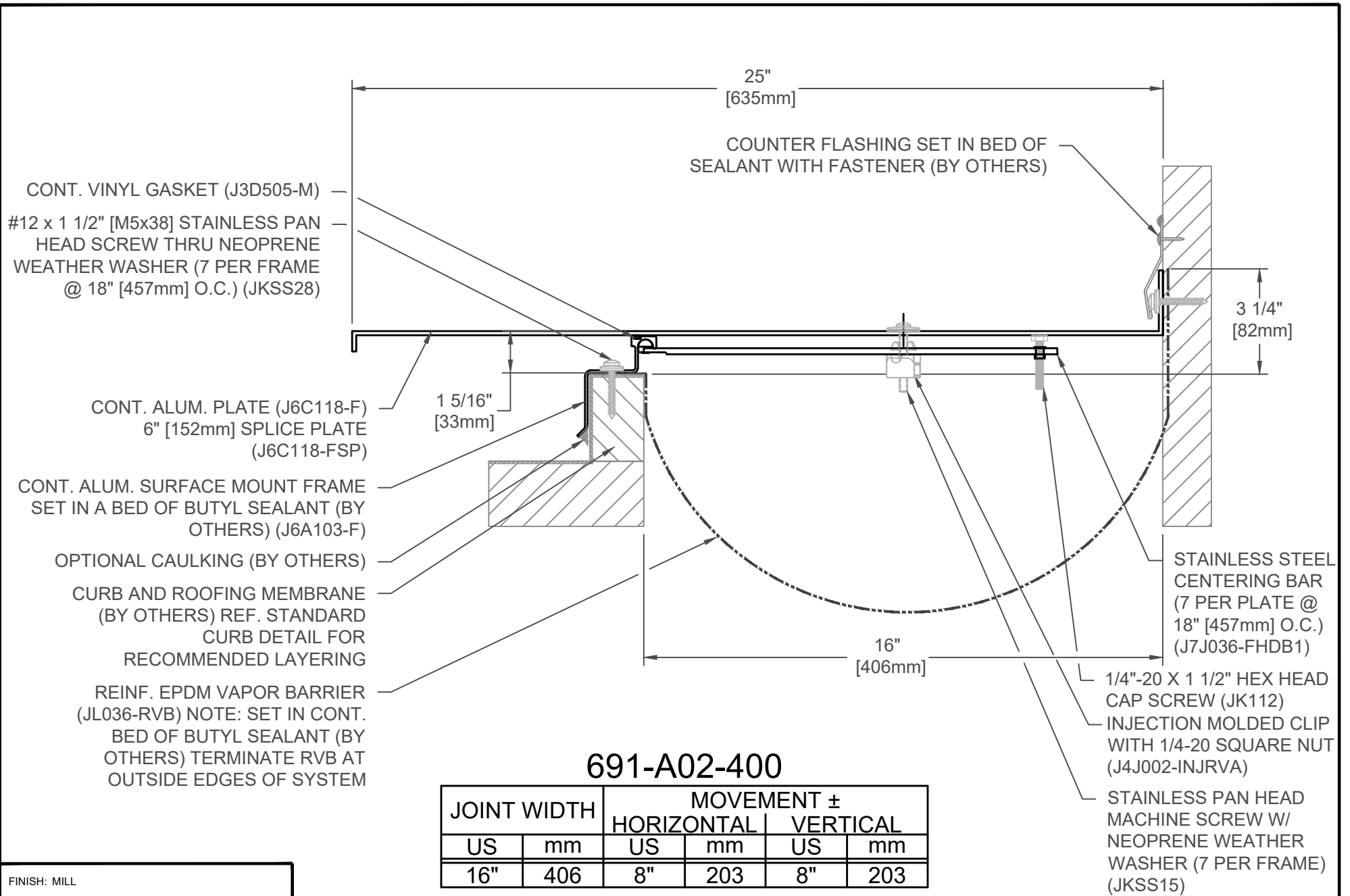
JOINT WIDTH		MOVEMENT ±			
		HORIZONTAL		VERTICAL	
US	mm	US	mm	US	mm
14"	356	7"	178	7"	178

FINISH: MILL
PROJECT:
CUSTOMER:
LOCATION:

APPLICATION-  
CURB MOUNTED CENTERING BAR  
ROOF/WALL CONDITION

DATE:	12-7-16
SCALE:	1:4
DOC:	CADJM.004/R7

**inpro.**  
For More Information Visit: [Inprocorp.com](http://Inprocorp.com)



FINISH: MILL
PROJECT:
CUSTOMER:
LOCATION:

APPLICATION-  
CURB MOUNTED CENTERING BAR  
ROOF/WALL CONDITION

DATE:	12-7-16
SCALE:	1:4
DOC:	CADJM.004/R7

**inpro.**  
For More Information Visit: [Inprocorp.com](http://Inprocorp.com)