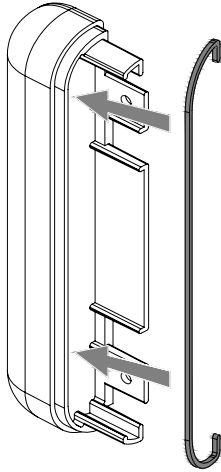


# Installation Instructions

700WG Reveal

---

FIG. 1

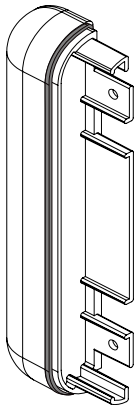


Please read all instructions before installing wall guard.

Material must be stored, installed and used in environmentally controlled conditions.

1. Slip reveal over locator surface on End Caps, Inside and Outside Corners. See Fig. 1 & 2.

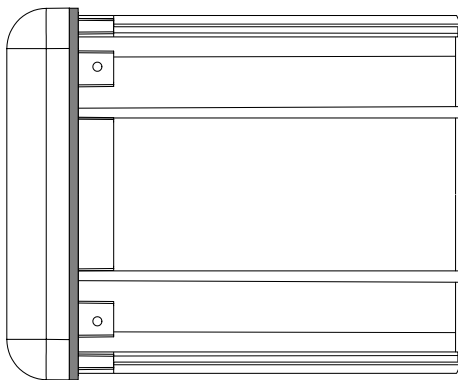
FIG. 2



2. Attach Returns and Corners to retainer, leaving 1/16" [2mm] gap between Return/Corner and retainer allowing for adjustment. See Fig. 3.

**Note:** Cut cover to length between the reveal pieces on the returns and/or corners.

FIG. 3



IPC.1506 /REV.2

IPC® Door + Wall Protection

inpro.com • 800.222.5556 • 262.679.9010

World Headquarters S80 W18766 Apollo Drive, Muskego, WI 53150 USA

Installation Hotline: 866.394.6776

**inpro**®