

Installation Instructions

800/800W/855/G2-800 Continuous Bracket Handrails

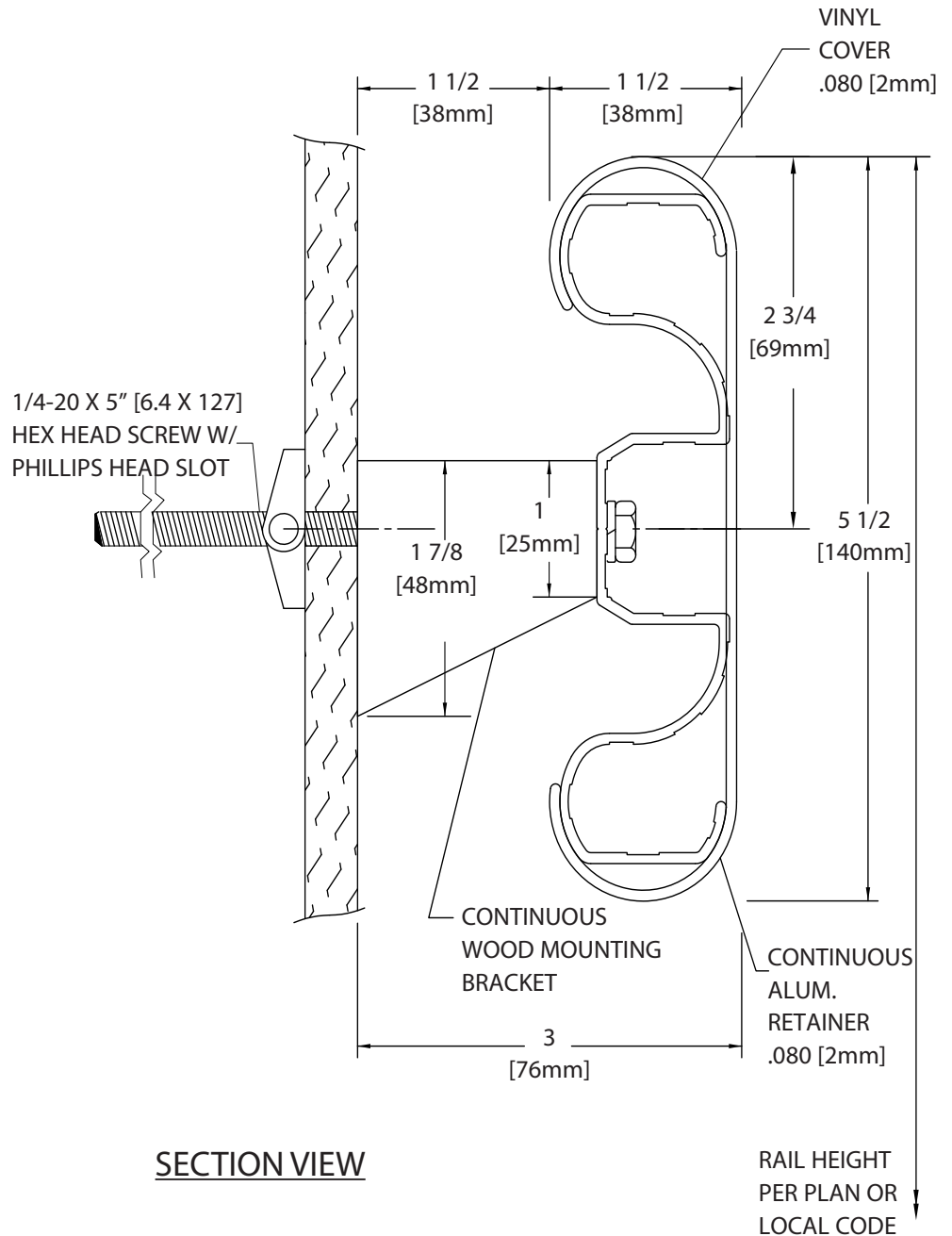
Please read all instructions before installing handrail.

Important

1. Acclimate materials 24 hrs before installation. Maintain temperature controlled environment after installation
2. Install in accordance with manufacturer's installation instructions. Failure to do so will void the warranty.

Installation tips

1. Cut covers up to 1/16" (1.6mm) longer to ensure a tight fit.
2. Lubricate blades when cutting aluminum to reduce burrs.



SECTION VIEW

Recommended tools

Safety Glasses, Tape Measure, 3/8" socket for machine screw hex bolt, 7/16" socket for wood screw hex bolt Level, Power Drill, Drill Bits - 1/4" masonry (concrete/concrete block), Power Miter Saw, 10" Blade with 60-80 Carbide Tipped Teeth

IPC.496_REV 3

Installation Hotline • 866.EZINPRO
Inprocorp.com • 800.222.5556 • 262.679.9010
World Headquarters S80 W18766 Apollo Drive, Muskego, WI 53150 USA

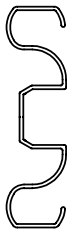
IPC®
DOOR + WALL PROTECTION SYSTEMS
A DIVISION OF INPRO®

Installation Instructions

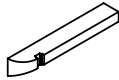
Please read all instructions before installing handrail.

800/800W/855/G2-800 Continuous Bracket Handrails

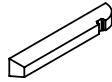
Components and fasteners



800A
CONTINUOUS
ALUMINUM
RETAINER



CBRKLR
CONTINUOUS
BRACKET LEFT
RETURN PIECE



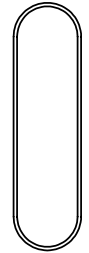
CBRKRR
CONTINUOUS
BRACKET RIGHT
RETURN PIECE



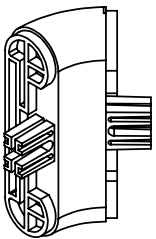
CBRKLF
CONTINUOUS
BRACKET
STRAIGHT



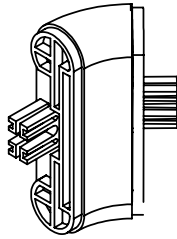
800V
COVER



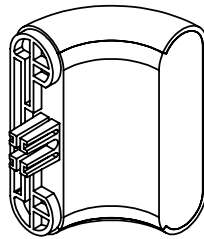
800HR
REVEAL
STANDARD ON
800W, G2-800



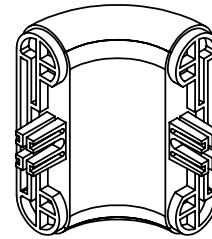
803135
135° OUTSIDE
CORNER



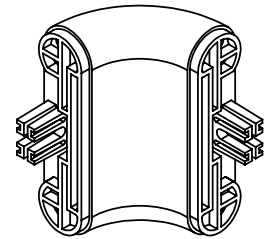
805135
135° INSIDE
CORNER



802
RETURN



803
90° OUTSIDE
CORNER



805
90° INSIDE
CORNER



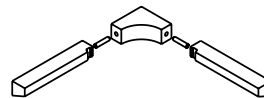
1/4" [6mm]
LOCK WASHER
SPRING REGULAR



1/4"-20 [6mm]
FLANGED SCREW
HEX NUT



1/4"-20 [6mm]
HEX WASHER
SCREW



CBRKOC
CONTINUOUS
BRACKET INSIDE
CORNER



CBRKOC
CONTINUOUS
BRACKET OUTSIDE
CORNER

Wall Condition	Specified Fasteners	Inpro Part #
Steel Stud/Gypsum Wall	1/4-20 x 5" Phillips hex head Bolt with toggle wing and lock washer	HWK-801D
Concrete/Concrete Block	1/4-20 x 5" Phillips hex head bolt with lead anchor and lock washer	HWK-801C
Wood Stud/Gypsum Wall	1/4" x 5" Hex Head Wood Screw and lock washer	HWK-801W
16 gauge steel Backer/Gypsum wall	#14 X 4" Indented hex washer, zink-plated TEK SCREW	HW69
Steel Stud or Metal Backer/Drywall (OSHDP)	1/4-20 x 5" Phillips hex head Bolt with lock washer and 1/4" Hilti Toggler	HWK-801OD
Concrete/Concrete Block (OSHDP)	1/4" x 4" Torx Hex Washer Head Screw (Hilti Kwik-Con II) and lock washer	HWK-801OC
Wood Stud or Wood Backer/Gypsum Wall (OSHDP)	1/4" x 5" Hex Head Wood Screw and lock washer	HWK-801OW

Installation Hotline • 866.EZINPRO

Inprocorp.com • 800.222.5556 • 262.679.9010

World Headquarters S80 W18766 Apollo Drive, Muskego, WI 53150 USA

IPC®

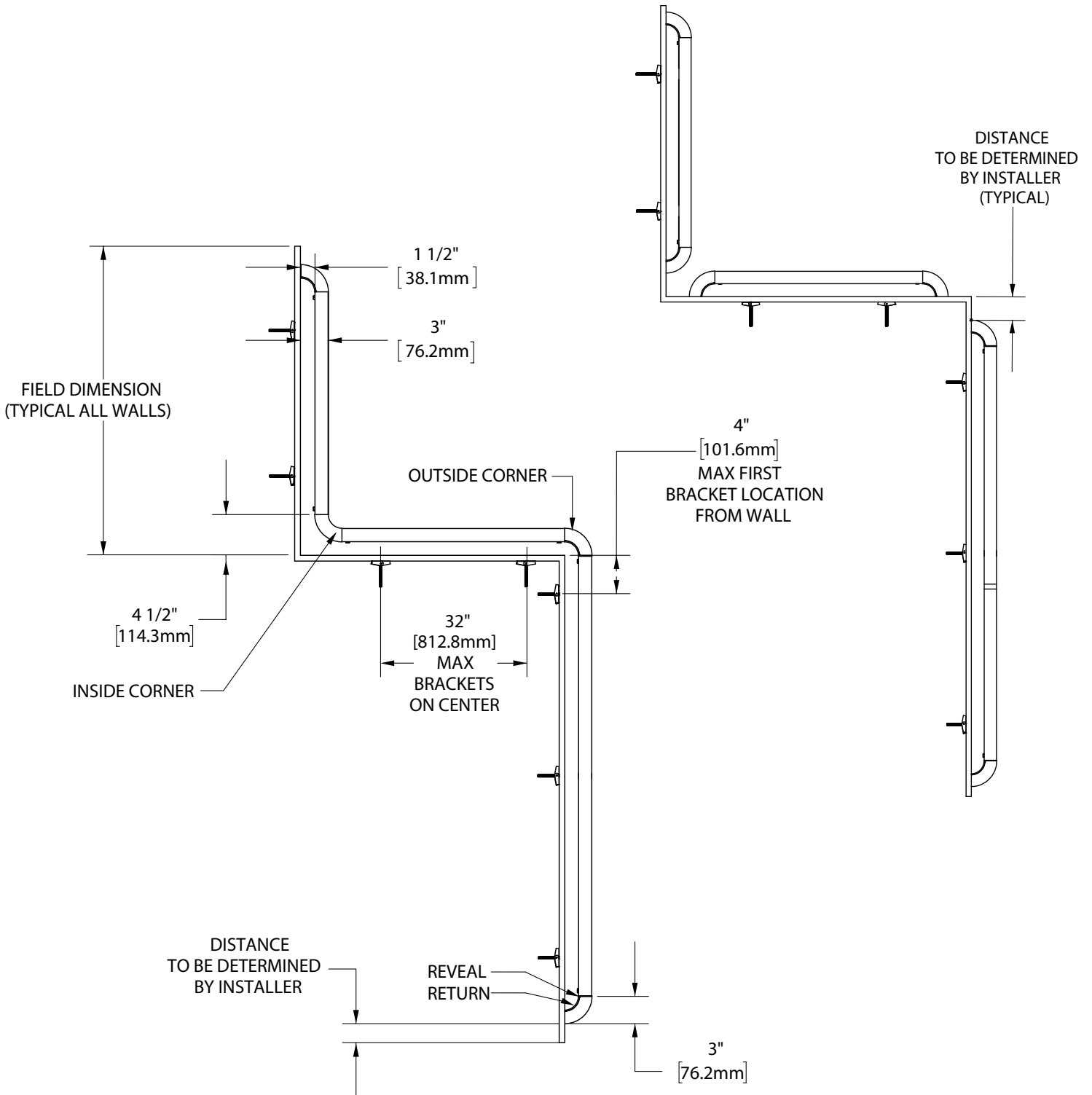
DOOR + WALL PROTECTION SYSTEMS
A DIVISION OF INPRO®

Installation Instructions

Please read all instructions before installing handrail.

800/800W/855/G2-800 Continuous Bracket Handrails

Layout view



Installation Hotline • 866.EZINPRO

Inprocorp.com • 800.222.5556 • 262.679.9010

World Headquarters S80 W18766 Apollo Drive, Muskego, WI 53150 USA

IPC®

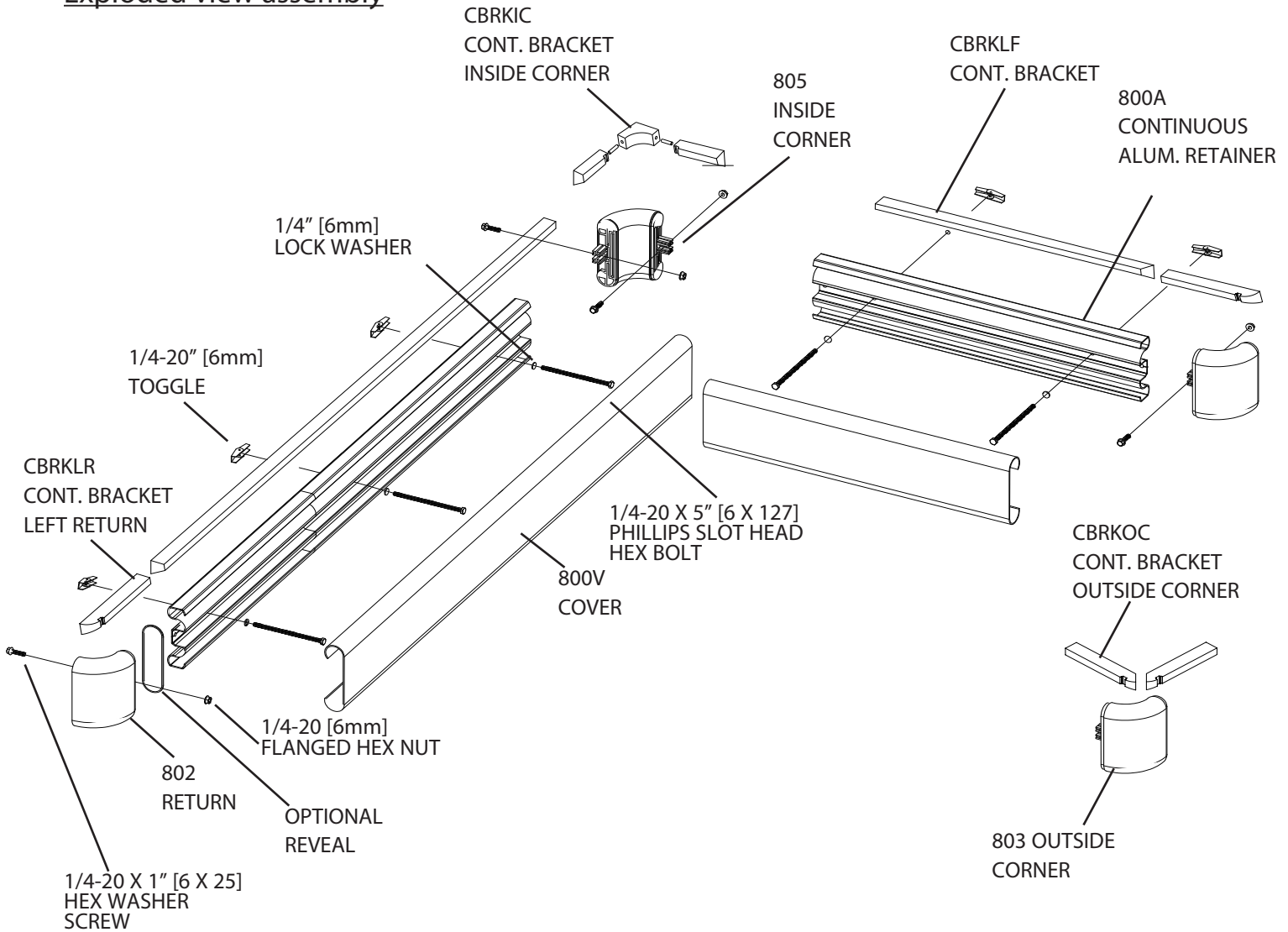
DOOR + WALL PROTECTION SYSTEMS
A DIVISION OF INPRO®

Installation Instructions

Please read all instructions before installing handrail.

800/800W/855/G2-800 Continuous Bracket Handrails

Exploded view assembly



Installation Hotline • 866.EZINPRO

Inprocorp.com • 800.222.5556 • 262.679.9010

World Headquarters S80 W18766 Apollo Drive, Muskego, WI 53150 USA

IPC®

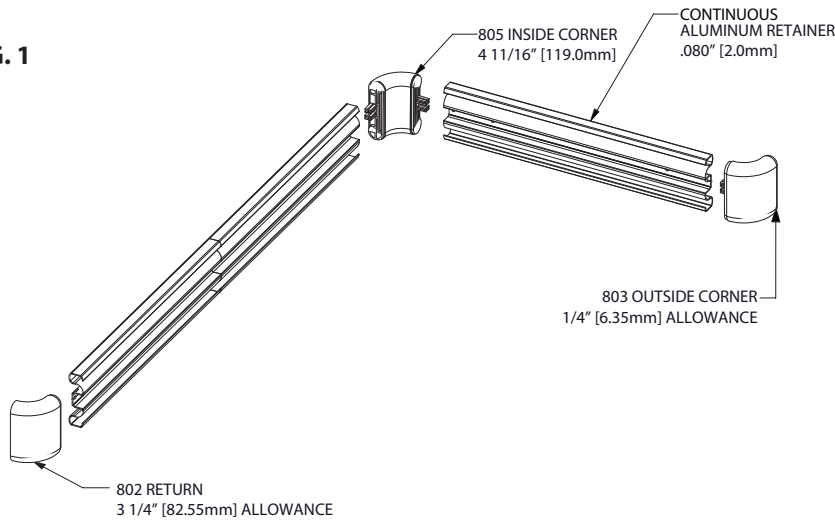
DOOR + WALL PROTECTION SYSTEMS
A DIVISION OF INPRO®

Installation Instructions

800/800W/855/G2-800 Continuous Bracket Handrails

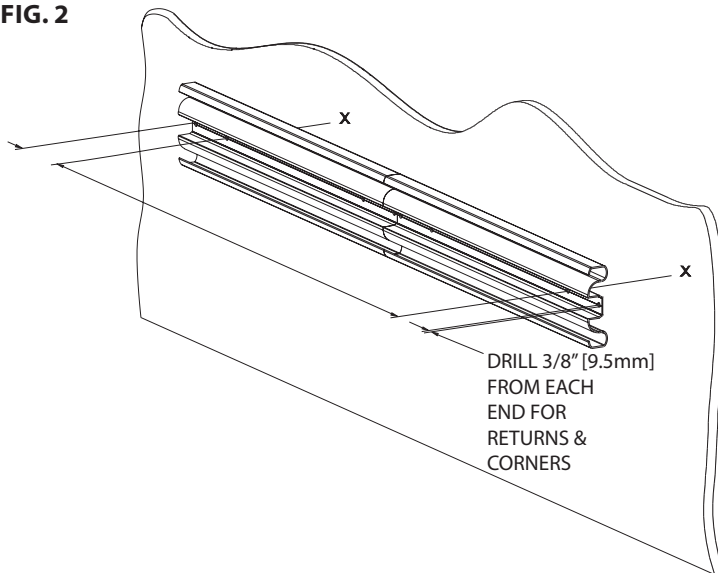
Please read all instructions before installing handrail.

FIG. 1



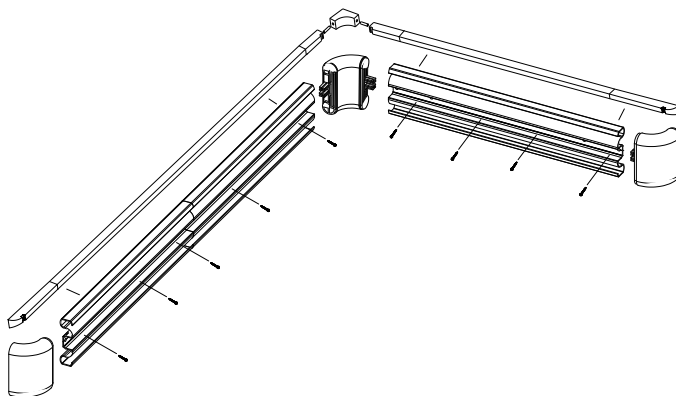
1. Cut aluminum retainer to desired length, leaving allowance for returns, outside corners and inside corners. See Figure 1.

FIG. 2



2. Drill holes 3/8" (10mm) from each end of the aluminum retainer for returns or corners.
 2a. Attach returns and corners to the aluminum retainer using one 1/4" x 20 serrated flange hex bolt and one 1/4" x 20 serrated flange hex nut for each return. To allow for adjustments, leave at least a 1/16" (1.6mm) gap between the returns and corners and the end of the aluminum retainer when sliding the two components together.

FIG. 3



3. Cut the continuous bracket pieces to the correct length to fit the back of the handrail.
 a. Left and right outside corner pieces mate to form a complete outside corner.
 b. Left and right corner parts mate and connect with dowels to the inside corner part to complete an inside corner condition.
 c. When bracket pieces butt together apply a small amount of IPC Vinylseal to the mating surfaces.
 d. Attach the bracket pieces to the aluminum with 1 5/8" [41mm] phillips head self tapping screws from the front of the retainer. See Figure 3.
 e. Run a bead of IPC Vinylseal chalk along the top edge of the bracket and aluminum. Also, fill in any gaps by the fasteners for the returns and corners with Vinylseal.

Installation Hotline • 866.EZINPRO

Inprocorp.com • 800.222.5556 • 262.679.9010

World Headquarters S80 W18766 Apollo Drive, Muskego, WI 53150 USA

IPC®

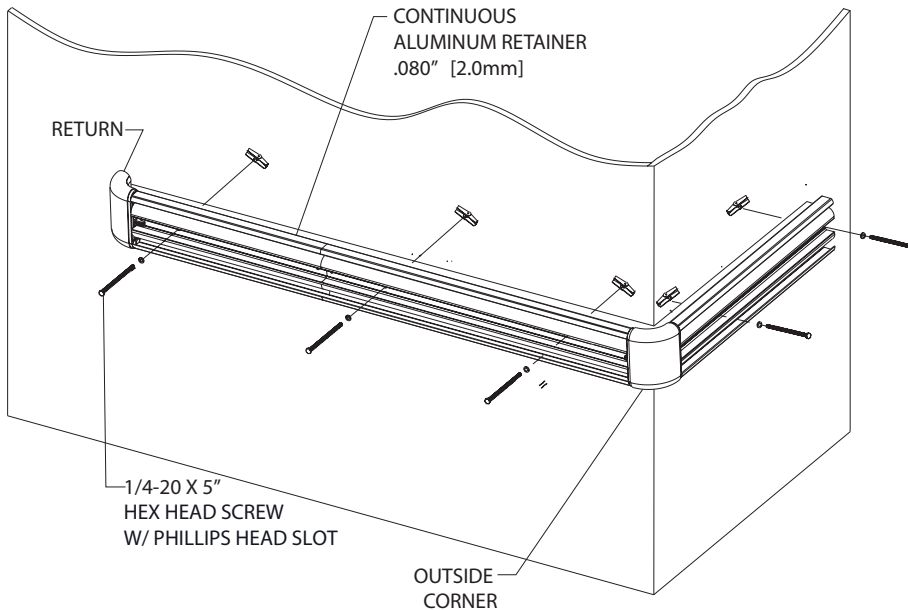
DOOR + WALL PROTECTION SYSTEMS
 A DIVISION OF INPRO®

Installation Instructions

800/800W/855/G2-800 Continuous Bracket Handrails

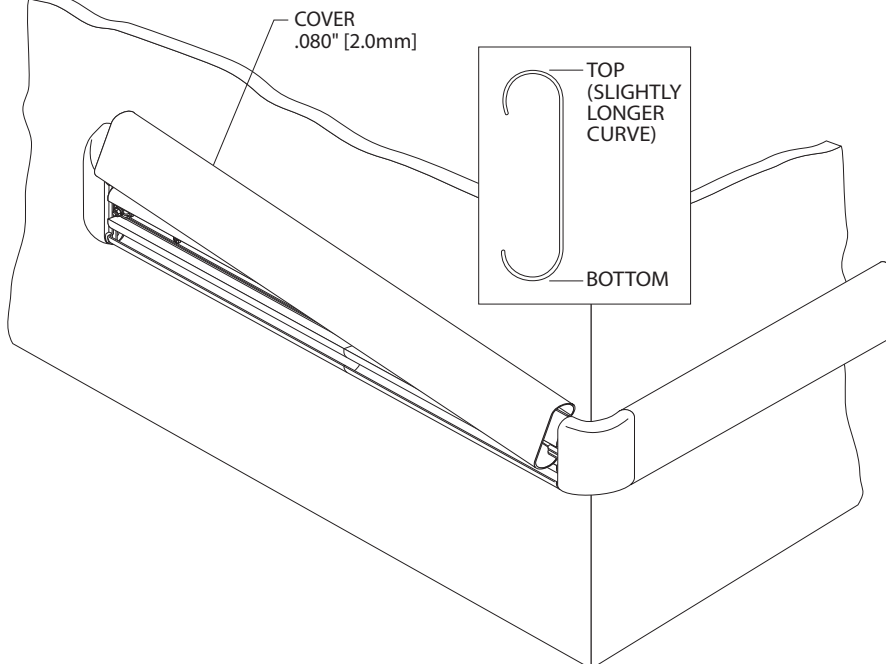
Please read all instructions before installing handrail.

FIG. 4



4. Drill 1/4" (6mm) holes on the centerline of the aluminum retainer and through the continuous mounting bracket, for the mounting fasteners. Holes should be 4" (102mm) from the ends and spaced every 32" (813mm). Hold the handrail and bracket assembly to the wall at the required height. Level and transfer the mounting holes to the wall. Drill all marked holes on the wall with a 3/4" drill bit for toggle bolts or 1/2" drill bit for lead anchors
5. Insert one 5" hex head screw, one lock washer and one toggle wing or lead anchor. Mount the assembled retainer with bracket into the holes on the wall. Level the retainer and tighten the screws to secure the retainer to the wall.

FIG. 4



6. Cut the vinyl cover to the distance between the returns and corners. NOTE: Trim all factory edges square, before installation. Position the vinyl cover on the aluminum retainer starting at the top and pivoting it over the bottom of the retainer until it snaps into place.

Note: For 855 Covers Only – When continuous runs are over 12' (3m), covers should be installed in consecutive order using the numbers found on the back of covers. This ensures proper alignment of accent strip.

Installation Hotline • 866.EZINPRO

Inprocorp.com • 800.222.5556 • 262.679.9010

World Headquarters S80 W18766 Apollo Drive, Muskego, WI 53150 USA

IPC®

DOOR + WALL PROTECTION SYSTEMS
A DIVISION OF INPRO®