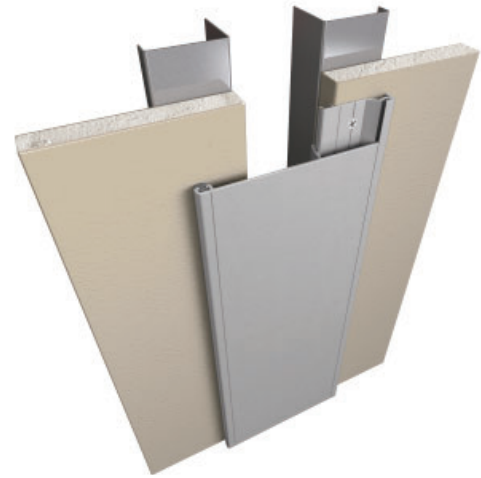


# 811 Series

A07 - Wall to Wall or Ceiling to Ceiling

A09 - Wall to Corner or Ceiling to Wall



Movement Rating  $\pm$  50%

## Product Guide



Thermal



Interior



Fire Rated Option



Vapor Barrier Option

- Unique ratcheted design accommodates uneven or odd angle wall conditions
- Designed for interior walls and ceilings
- Locator lip and forward facing pre-drilled holes for installation ease
- Snap-fit cover plate design hides the fasteners and allows for quick on-site assembly
- Economical solution for retrofit and surface mount installations
- Clear anodized finish standard
- Optional Kynar, powdercoat, and anodized finishes also available
- Custom stainless steel veneer option available

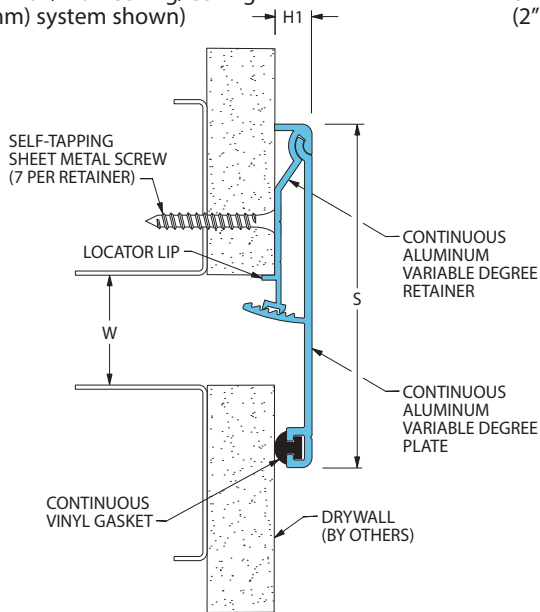
Application	System	W		H1		H2		S		B		Movement +/-			
		Joint Width		Frame Height 1		Height 2		Sightline		Blockout		Horizontal		Vertical	
		US	mm	US	mm	US	mm	US	mm	US	mm	US	mm	US	mm
Wall/Wall Ceiling/Ceiling	811-A07-025	1"	25	3/8"	9	*	*	3 1/8"	79	*	*	1/2"	13	*	*
	811-A07-050	2"	51	3/8"	9	*	*	4 5/8"	118	*	*	1"	25	*	*
	811-A07-075	3"	76	3/8"	9	*	*	6 1/8"	156	*	*	1 1/2"	38	*	*
	811-A07-100	4"	102	3/8"	9	*	*	7 5/8"	194	*	*	2"	51	*	*
	811-A07-125	5"	127	3/8"	9	*	*	9 5/8"	245	*	*	2 1/2"	63	*	*
811-A07-150	6"	152	3/8"	9	*	*	10 5/8"	270	*	*	3"	76	*	*	
Wall/Corner Wall/Ceiling	811-A09-025	1"	25	3/8"	9	*	*	1 3/4"	44	*	*	1/2"	13	*	*
	811-A09-050	2"	51	3/8"	9	*	*	3 1/4"	83	*	*	1"	25	*	*
	811-A09-075	3"	76	3/8"	9	*	*	4 3/4"	121	*	*	1 1/2"	38	*	*
	811-A09-100	4"	102	3/8"	9	*	*	6 1/4"	159	*	*	2"	51	*	*
	811-A09-125	5"	127	3/8"	9	*	*	8 1/4"	210	*	*	2 1/2"	63	*	*
811-A09-150	6"	152	3/8"	9	*	*	9 1/4"	235	*	*	3"	76	*	*	

IPC.885/REV.18

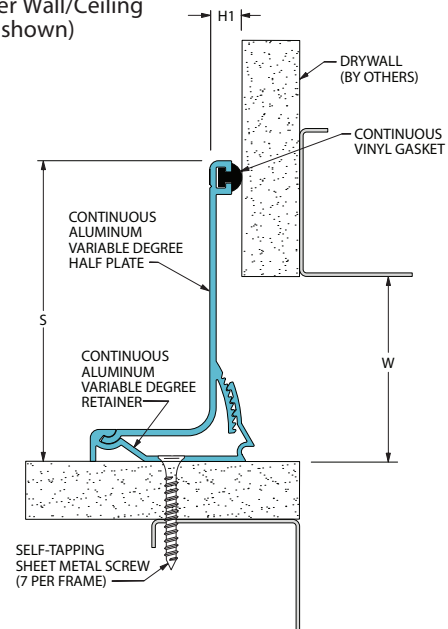
# 811 Series

## Wall and Ceiling Systems

811-A07 Wall/Wall Ceiling/Ceiling  
(1" (25mm) system shown)

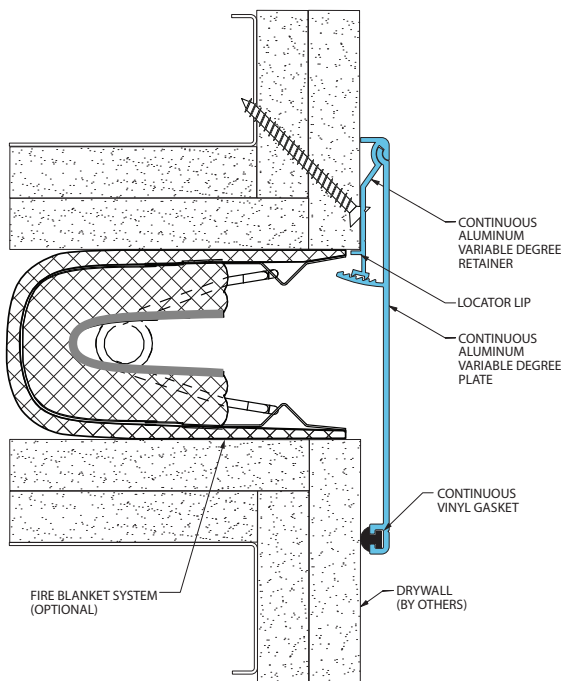


811-A09 Wall/Corner Wall/Ceiling  
(2" (50mm) system shown)



## 811 Series Options

Fire Blanket System  
(811-A07-075 system shown)



Vapor Barrier System  
(811-A07-075 system shown)

