

Installation Instructions

Continuum™ Shower Surround

Important

Storage

Flat sheet - Store Continuum™ Rigid Sheet in a clean, dry, interior area at temperatures between 50° F and 95° F [10°-35°C]. Keep out of direct sunlight. Make sure sheet is well supported.

- Store in a clean, dry, interior area
- Avoid direct sunlight
- Store between 50°F and 95°F [10°-35°C]

Acclimate

24 hours before the installation, acclimate the sheet material and adhesive in the environmentally controlled area where it will be installed. The ideal conditions are, temperature between 60°F and 75°F [16°-24°C] and a humidity level is between 35-55%. Maintain a constant temperature between 65°F - 80°F [18°-27°C] and a constant humidity level less than 80% in the installation area 24 hours before installation, during the entire installation and 48 hours after the installation.

- Acclimate sheet and adhesives in the environmentally controlled installation area.
- Acclimate sheet and adhesives at temperatures between 65°F and 80°F [18°-27°C].
- Acclimate sheet and adhesives at humidity less than 80%.
- Maintain a constant temperature and humidity 24 hours before, during and 48 hours after installation.

Recommended Adhesives and Substrates

Inpro EN-547-SSA: New Drywall, Untreated Plywood, Cement Board**

** adhesive may take longer to cure and will require bracing to ensure complete bonding

Inpro EN-548: New & Painted Drywall, Mold/Moisture Resistant Faced Drywall, Treated & Untreated Plywood, Cement Board, Aluminum, Stainless Steel, Galvanized Metal, FRP, Ceramic Tile, Polyurethane or Polystyrene foam, Foil Faced Insulation.

Recommended Tools

- Extension Roller
- V-notched Trowel
- Circular Saw with Fine Toothed Carbide Blade
- Oscillating Multi-tool with Wood Blade
- Jigsaw
- Swivel Head 18 Gauge Shears
- Drywall Rotozip
- Utility Knife and Blades
- Deburring Tool
- Saw Horses
- Plywood boards (larger than panels)
- Dry, Lint Free Rags
- Sandpaper
- Blue Painters Tape
- Solvent / Water and Soap for clean up.
- Denatured Alcohol

IPC.3311/REV.2

ENDURANT® Washroom Systems

inpro.com • 800.222.5556 • 262.679.9010

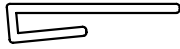
World Headquarters S80 W18766 Apollo Drive, Muskego, WI 53150 USA

Installation Hotline: 866.394.6776

inpro®

Installation Instructions

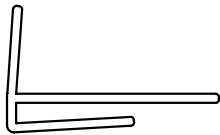
Continuum™ Shower Surround



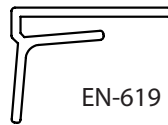
EN-617
PERIMETER
CAP



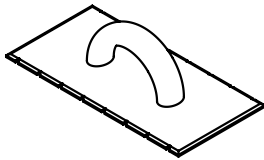
EN-618
VERTICAL
DIVIDER



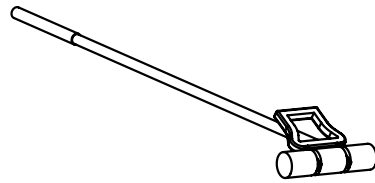
EN-620
OUTSIDE
CORNER



EN-619
INSIDE
CORNER



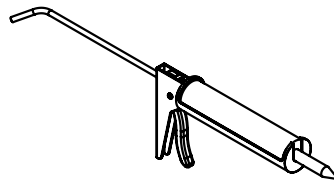
EN-546
TROWEL



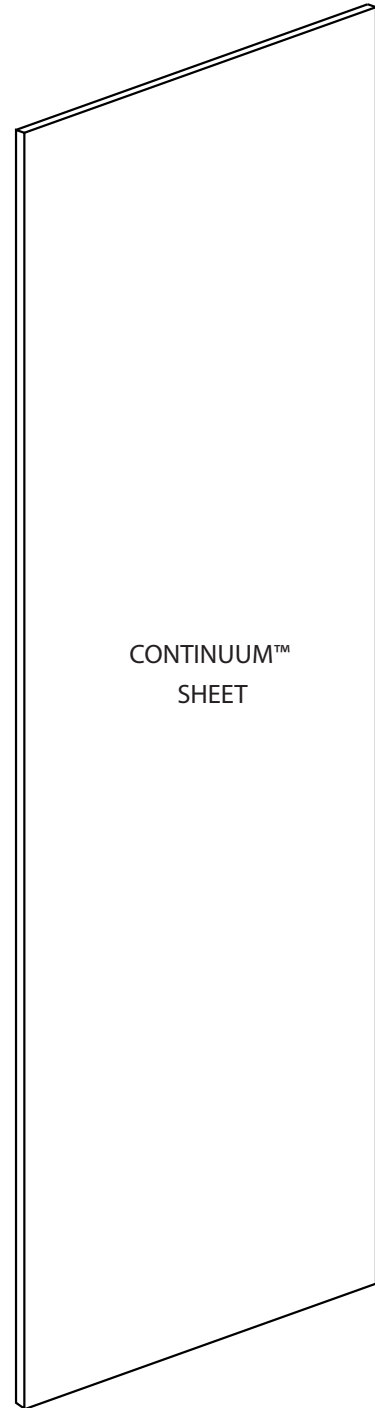
EN-333
EXTENSION ROLLER



POROUS:
EN-547-SSA
NON-POROUS:
EN-548



FASTFILL
CAULK



CONTINUUM™
SHEET

ENDURANT® Washroom Systems

inpro.com • 800.222.5556 • 262.679.9010

World Headquarters S80 W18766 Apollo Drive, Muskego, WI 53150 USA

Installation Hotline: 866.394.6776

inpro®

Installation Instructions

Continuum™ Shower Surround

Wall Preparation

Walls must be free from dirt, grease and loose paint. Remove any coatings designed to improve clean-up since these coatings may affect adhesion. Glossy surfaces may require sanding or priming to help promote adhesion. Do not install sheet if the moisture content of the drywall is greater than 4%. Ensure walls are flat and surface finish is even.

New drywall or plaster – New drywall should have a level 3 dry wall finish (Taped joints with 2 coats of joint compound). Before install walls must be smooth and wiped clean to remove dust. DO NOT seal or prime walls with paint or primer. Any clearly uneven areas should be filled and smoothed. Tapered joints need only a fill and tape coating using a setting joint compound.

- Remove Dust and Dirt
- DO NOT Seal walls with paint/primer.

Painted Drywall or Plaster - Painted surfaces will prevent solvent-free or solvent based adhesives from drying. Any painted surfaces must be roughed up using a wall paper remover, or low grit (20 or less) heavy duty sandpaper to break the moisture barrier of the paint.

- Paint prevents adhesive from drying and achieving bond.
- Strip the paint off wall, at a minimum rough painted surface to remove moisture barrier.

Plywood - Plywood walls must be flat and even. Any warped plywood must be removed and replaced. Solvent-Free adhesives (i.e. Titebond Fast Grab) cannot be used on any pressure treated, or fire-rated plywood.

- Ensure installed wall is flat and even
- Remove and Replace any warped plywood

Concrete and Concrete Masonry Units – Panels installed onto concrete block or brick walls will likely result in loose spots or bulges. It is recommended to install gypsum board, or another appropriate substrate over the furring, then install Continuum™ panels according to the standard installation instructions. If it is the preference of the owner or contractor to install over existing concrete or block, panels should be installed with Advance Polymer Adhesive.

- Install appropriate substrate (i.e. Gypsum or plywood)
- Follow instructions for installed substrate
- If you must install on block walls use Advanced Polymer Adhesives

Non-Porous Substrates - Non-porous substrates include metal, ceramic tile, high-pressure laminate, epoxy painted walls, vinyl wall covering (VWC) and rigid sheet. Solvent, polymer-based, and latex-based adhesives will not dry on non-porous surfaces. Adhering Continuum™ sheet over existing sheet or VWC will increase smoke generation and flame spread and negate the Class A fire rating. If you choose to do this contact adhesive manufacturer for additional recommendations.

Installation Instructions

Continuum™ Shower Surround

Install Preparation

Environmental Concerns

Spaces with High Humidity / Low Temperatures

When installing Continuum™ in spaces that contain high humidity or low operating temperatures, it is critical to always acclimate the panel to the operating conditions of that space before installing panels. In these cases, it is critical to follow the installation guide for expansion/contraction spacing. Be sure to select an adhesive which is capable of bonding in the conditions required. In rooms with high humidity, failure to fully seal moisture entry points with silicone can likely result in curling, warping, and delamination.

Spaces Near Heat Sources

Continuum™ should not be used near heat sources which radiates heat over 130 °F (55°C) (such as cooking appliances, space heaters, etc...). In these conditions Inpro Stainless Steel Wall Panels are recommended.

Pre-Installation: Cutting and Dry Fitting Sheets

Before applying adhesive or fastening, dry fit each panel to its final location. Any cutting, drilling, or modification to the panel should be done before application of adhesive. When laying out sheet allow a 1/8" [3mm] gap between sheet material and ceilings, floors, corners, door casings, window casings and between sheets.

Cut sheet material with a metal straight edge and circular saw. Always cut so the blade enters the back (un-textured side) of the sheet. If using a utility knife, cut the sheet using multiple passes.

Cut openings in the sheet for valves, fixtures and other objects located on the wall. Inpro recommends the use of an Oscillating Multi-Tool for cutting out openings. Openings can also be cut by drilling a 1/4" (6mm) diameter hole inside of the area to be removed, then use a jig saw or swivel headed shears to cut out the section to be removed. If mechanically fastening through the sheet to mount fixtures, pre-drill holes using a drill bit that is 1/4" (6mm) larger than the fastener (required thru sheet only).

- Mark plumb lines and level lines on wall.
- Allow 1/8" [3mm] between sheet and ceilings, floors, walls, casings and other sheets.
- Do NOT install cove base directly over rigid sheet;
- Use a straight edge and fine toothed circular saw to cut sheet material.
- Cut sheet using multiple passes when using a utility knife.
- Precut valve and fixture locations
- DO NOT install sheet too close to heat sources.
- Dry fit the sheet to the wall before install

ENDURANT® Washroom Systems

inpro.com • 800.222.5556 • 262.679.9010

World Headquarters S80 W18766 Apollo Drive, Muskego, WI 53150 USA

Installation Hotline: 866.394.6776

inpro®

Installation Instructions

Continuum™ Shower Surround

Install and Adhesive Application

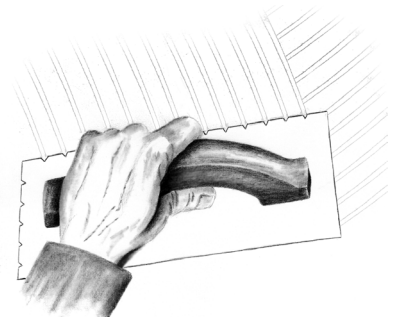
Inpro EN-547-SSA - Porous Surface Application

Inpro EN-547-SSA adhesive must be applied to the back of the sheet in a cross hatch pattern before installation using a V-notch trowel. Notches must be 3/16" wide X 1/4" deep and spaced 1/2" apart (center to center). Adhesive is ready to adhere as soon as its applied to back of panel.

Application temperature: After following the steps to acclimate the materials, maintain a constant temperature between 65°F and 80°F [18°-27°C] with an indoor humidity level below 80%.

Apply adhesive to the entire back face of the sheet. Remove any unwanted excess adhesive from surfaces with a damp cloth before the adhesive has cured. Cured adhesive is difficult to remove. Do not let adhesive dry in the notches of the trowel. This will change the application rate of the trowel.

Figure 1



- Allow materials to acclimate following the recommendations stated earlier.
- Apply Inpro EN-547-SSA using a V-notch trowel with 3/16"x1/4" spaced 1/2" [13mm] apart.
- Apply adhesive only on back of sheet
- Apply adhesive to the entire back side of sheet
- Remove any excess adhesive before it has cured
- Clean trowel so notches do not get clogged
- If adhesive dries, tools and adhesive may be cleaned with water/acetone/vinegar mixture
- Application rate is approximately 50 square feet per gallon [1.22 sq. M/per liter] using specified V-notch trowel

Inpro EN-548 - Non-Porous Surface Application

Inpro EN-548 must be applied to the back of the sheet in a cross hatch pattern before installation using a V-notch trowel. Notches must be 3/16" wide X 1/4" deep and spaced 1/2" apart (center to center). Adhesive is ready to adhere as soon as its applied to back of panel.

Application temperature: After following the steps to acclimate the materials, maintain a constant temperature between 65°F and 80°F [18°-27°C] with an indoor humidity level below 80%.

Apply adhesive to the entire back face of the sheet. Working time of the adhesive is 20 minutes, apply as much adhesive within that 20 minute window as allowable on for the panels. Remove any excess adhesive from unwanted surfaces with a damp cloth before the adhesive has cured. Cured adhesive is nearly impossible to remove. Do not let adhesive dry in the notches of the trowel. This will change the application rate of the trowel.

- Allow materials to acclimate following the recommendations stated earlier.
- Apply Inpro EN-548 using a V-notch trowel with 3/16"x1/4" spaces 1/2" [13mm] apart.
- Apply adhesive only on back of sheet only
- Apply adhesive to the entire back side of sheet.
- Working time of adhesive is roughly 20 minutes @ 70 [21°C]
- Remove any excess adhesive before it has cured.
- Clean trowel so notches do not get clogged.
- After installation of panel, clean any adhesive on the exposed face of the panel within 10 minutes using denatured alcohol and a clean rag.
- Application rate is approximately 50 square feet per gallon [1.22 sq. M/per liter] using specified V-notch trowel

ENDURANT® Washroom Systems

inpro.com • 800.222.5556 • 262.679.9010

World Headquarters S80 W18766 Apollo Drive, Muskego, WI 53150 USA

Installation Hotline: 866.394.6776

inpro®

Installation Instructions

Continuum™ Shower Surround

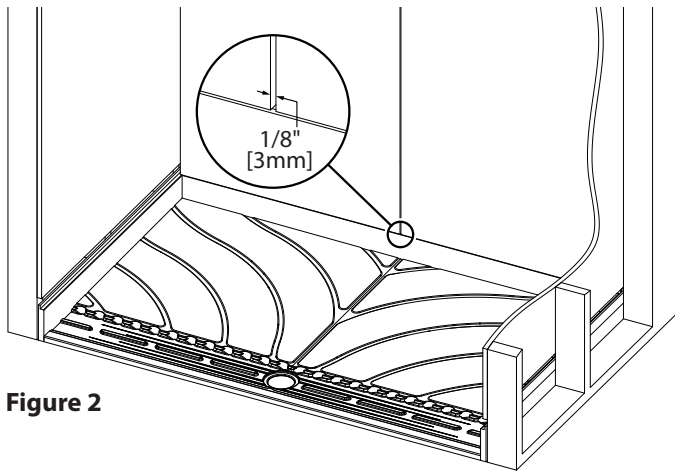


Figure 2

Adhesive Curing

Temperature and humidity levels will affect the time it takes for adhesive to cure. Under normal conditions working time should be 20 minutes at 70 °F. Working time decreases with increases in temperature. **The installer is responsible for determining the cure time of the adhesive, based on job site conditions. Do a test installation if needed.**

- Adjust cure time for temperature and humidity level.
- Working of adhesive is 20 minutes.
- **The installer is responsible for determining the cure time of the adhesive, based on job site conditions.**
- Do a test installation, if needed.

Positioning Sheet

As soon as adhesive has been evenly applied to back of sheet, position the sheet on the wall aligning the edges with plumb lines or level lines. Hold sheets back from ceiling, shower pans, floors, corners, casings and other sheets by 1/8" [3mm] to allow for expansion (see figure 2). If needed reposition the sheet on the wall by carefully pulling it back and re-aligning it to the wall. Use an extension roller to firmly embed the sheet into the adhesive. Apply heavy body pressure to every square inch of sheet, starting at the center and working to the edges, making sure it is bonded securely to the wall.

- Ensure adhesive is evenly spread on back of sheet.
- Position sheet on wall
- Allow 1/8" [3mm] gaps for expansion.
- Reposition sheet before rolling if needed.
- Roll entire sheet with extension roller, starting at the center and working to the edges.

When installing in tandem with our shower pans, make sure you are installing the sheet with the bottom edge in the correct location. Figure 3a shows the installation in tandem with our double water guard shower pan. Figure 3b shows the installation in tandem with our single water guard shower pan, which may be needed for ADA applications. Talk to a sales rep for more information.

Figure 3a

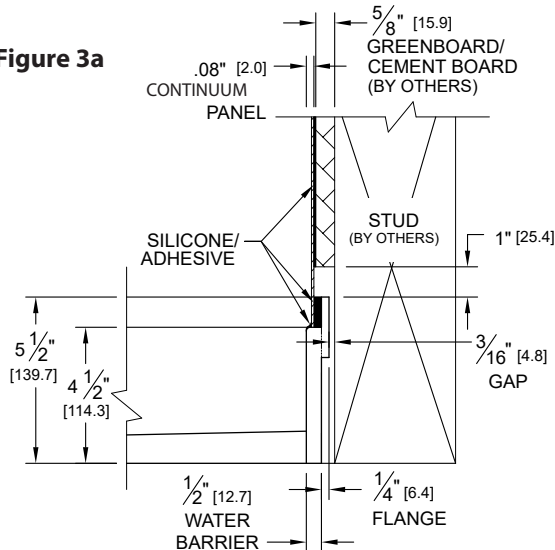
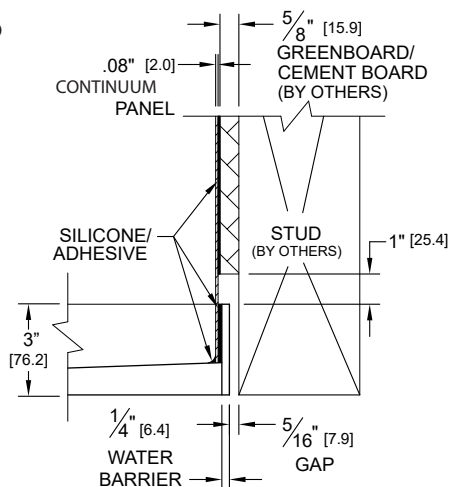


Figure 3b



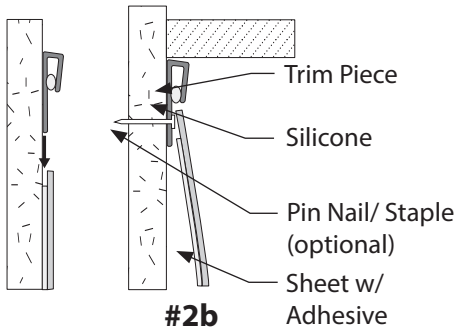
Installation Instructions

Continuum™ Shower Surround

Trim Pieces (see figures below)

If using trim, begin installation from an inside or outside corner, working outward. If using divider bars, pre cut to length before installing. Cut trim pieces with a metal straight edge and sharp utility knife. Run a small bead of silicone sealant into the channel on each trim piece, before installing

Install the first sheet on the wall and be sure to leave 1/8" (3mm) gap between sheet and corner. Slide vertical divider bars or inside corners behind the sheet. Overlap the edge of the sheet on the wall with the divider bar or inside corner, be sure to maintain a gap within the trim piece to allow for expansion and contraction. When using top caps and vertical divider bars, notch the back of the divider bar where it intersects with the top cap (see figures below). Install the top cap by sliding it on the top edge of the sheet after the sheet is in place. Roll all trim pieces and the entire sheet with an extension roller.



#2a

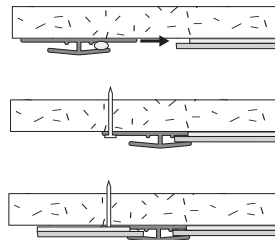
Perimeter Cap

1. Install sheet
2. Slide top cap trim behind sheet

#2b

Perimeter Cap at Ceiling

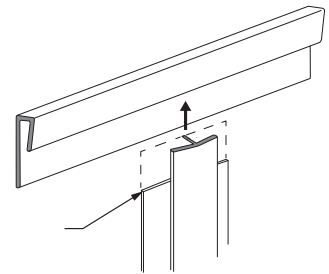
1. Install trim against fixed corner. (pin nail trim if desired)
2. Install sheet into trim.



#3

Divider Bars

1. Install 1st Sheet
2. Slide divider bar behind previously installed sheet
3. Install 2nd sheet, slide sheet up to locator nub



Intersecting Vertical Trims

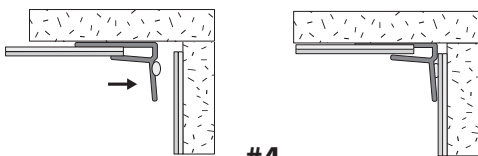
1. Cut vertical trim to length.
2. Clip the side wings of divider bar so "T" butts against edge of top cap.
3. Slide vertical trim behind previously installed sheet



#1

Outside Corners

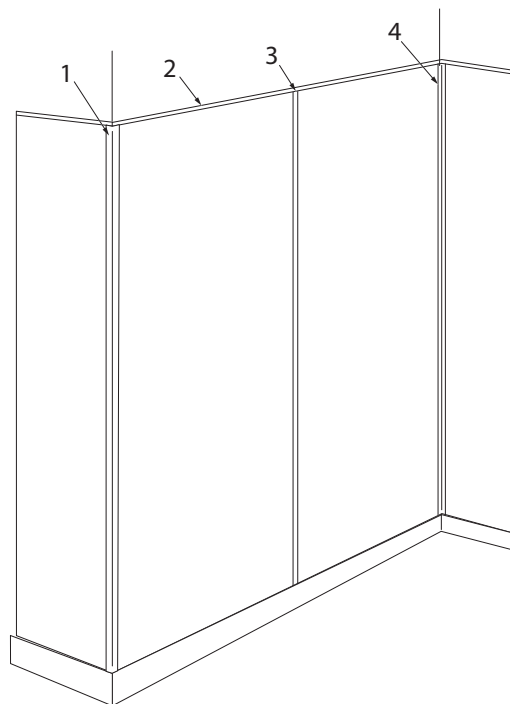
1. Install last sheet on oppsing wall, leaving a 1/8" [3mm] gap
2. Install 2nd sheet run, on last sheet ensure a 1/8" [3mm] gap is left between substrate corner and edge of sheet
3. Attach outside corner trim over previously installed sheet as shown (Clear Caulk or similar adhesive is recommended)



#4

Inside Corners

1. Install first sheet on opposing wall, leaving a 1/8" [3mm] gap, continue run.
2. Install the 1st sheet of the adjacent run with inside corner trim attached shown (silicone or similar adhesive is recommended) to bond corner
3. Apply painters tape to free corner.



ENDURANT® Washroom Systems

inpro.com • 800.222.5556 • 262.679.9010

World Headquarters S80 W18766 Apollo Drive, Muskego, WI 53150 USA

Installation Hotline: 866.394.6776

inpro®

Installation Instructions

Continuum™ Shower Surround

Fastfill Caulk - Vertical and Horizontal Seams

Install all sheets needed for the space leaving a 1/8" [3mm] gap between each sheet using dry wall nails or similar. Apply blue painters tape along the edge of each sheet after cleaning and rolling each sheet. Allow adhesive to cure for a minimum of 6 hours.

Use Fastfill Caulk to fill in the joints between sheets. Cut the spout on the tube at a 45° angle. Apply the Fastfill caulk to the joint filling the void completely. With a putty knife, remove excess caulk from the joint. Immediately after applying the caulk remove the painters tape. Remove unwanted caulk, before it cures, with a water dampened cloth.

- While adhesive cures maintain sheet spacing using two drywall nails.
- Apply masking tape on the edges of the joint.
- Apply caulk to joint and remove excess with putty knife.
- Remove painters tape before caulk cures.
- Repeat caulk application if sinking occurs.
- Remove unwanted caulk before it cures.

Fastfill Caulk - Sealing Bottom Edge

After all vertical and horizontal seams have been sealed, use Fastfill Caulk or similar silicone sealant to seal the bottom of the panel where it meets the floor or shower pan. Cut the spout on the tube at a 45° angle. Apply the Fastfill caulk or similar silicone sealant to the area, filling the void completely. Leave a 1/4" [6.4mm] minimum bead of sealant to make sure there is a water tight seal between the panel and the floor/shower pan. With a putty knife, remove excess caulk from the area. Remove unwanted caulk, before it cures, with a water dampened cloth.

- Apply caulk to area and remove excess with putty knife.
- Leave a 1/4" [6.4mm] minimum bead of sealant.
- Repeat caulk application if sinking occurs.
- Remove unwanted caulk before it cures.

Clean-up

Completion: Immediately upon completion of installation, clean sheet and remove layout marks, excess adhesive, and surface blemishes. Cured adhesive is difficult to remove. Use denatured alcohol and rub gently with a soft cloth. After adhesive is removed, wipe the area with a general purpose cleaner like fantastik®. Rinse the area with a water dampened cloth. Dry with a clean soft cloth.

- Upon Completion, remove layout marks, excess adhesive and surface blemishes.
- Cured Adhesive.
- Use denatured alcohol and gently rub.
- Follow by wiping with a cleaner like fantastik®.
- Rinse sheet with water dampened cloth.

Installation Instructions

Continuum™ Shower Surround

Maintenance

For general cleaning, use Antibacterial fantastik® All Purpose Cleaner Heavy Duty. Use a clean, lint-free cloth and wipe clean. For tough stains, like markers, pencil, white marks, and rubber heel marks, the following was shown to be most effective: Do not use any abrasive cleaning cloths or sponges.

- Zep® Heavy Duty Citrus Degreaser
- Clorox® Clean-up with Bleach
- Antibacterial fantastik® All Purpose Cleaner Heavy Duty

1. Spray products onto sheet and wipe with a dampened cloth.
2. Repeat process if stain remains. If cleaning product residue remains, rinse with water.

Note: Any reference to a specific branded product does not constitute an endorsement by InPro Corporation.

If pressure/power washing sheets, maintain a 3ft. [1m] distance from sheet, trim pieces, and seams. Ensure pressure does not exceed 3,300 psi. DO NOT use direct, focused pressure streams over sealant joints.

After Installation

Maintain environmentally controlled conditions after the installation. Large temperature changes can cause de-lamination.

- Maintain environmentally controlled conditions.
- Large temperature changes can cause de-lamination.

Continuum™ Supplemental Information

Continuum™ Shower Surround

Important Notes

1. Store all materials in an indoor location that is clean, dry and away from direct sunlight. Temperature is to be between 50°F and 95°F.
2. Maintain a climate controlled installation area.
3. When installing, choose and maintain a temperature between 65°F-80°F and a humidity level below 80%, 24 hours before and during installation
4. Maintain temperatures between 65°F and 80°F for 48 hours after installation.
5. Do not install sheet if the moisture content of the drywall is greater than 4%.
6. Acclimate sheet, trim and adhesives to the installation temperature 24 hours before installation.
7. With large orders of sheet, acclimate the sheet in stacks of 25.
8. Do not expose sheet material to ultraviolet light. Exposure to UV may result in fading or color change.
9. Do not install sheet material in direct sunlight or areas of elevated temperature. Excessive heat may cause bubbles and/or distorted sheet.
10. Cut sheet material with a metal straight edge and a circular saw. If using a utility knife multiple cuts may be required.
11. Maximum installed sheet length is 10-feet.
12. Leave a 1/8" [3mm] gap between sheets for expansion and contraction and around doorjambs, baseboards and ceiling. Use sealants or trims as recommended by Inpro.
13. Leave oversized openings in the sheet for pipes, ducts, etc. to allow for expansion.