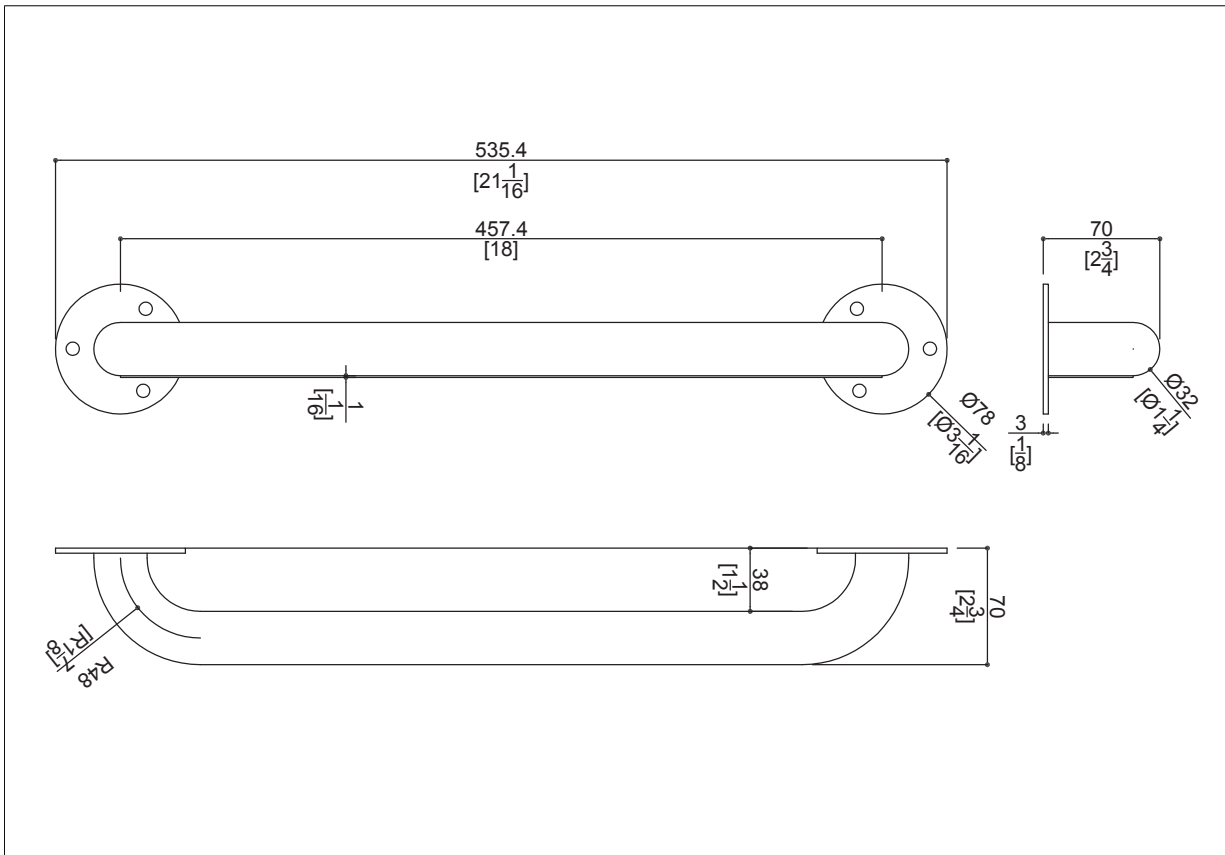


# Stainless Steel Ligature Resistant Grab Bar - 18"

## Technical Data



Straight grab bar made of seamless stainless steel AISI 304 pipe, with satin finish

*Code* **DSGBANTIL-18** *Series* **Stainless Steel Ligature Resistant Grab Bars**

Net weight lb. Dimensions [WxDxH] In. 21 1/16x2 3/4x 3 1/16

In use weight capacity *Vertical lb.* 330,69 330,69

### Use and installation info

*Use*

*Cleaning*

*Fasteners*

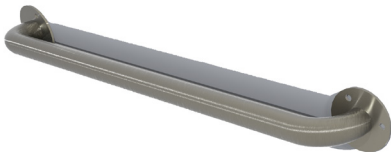
### Packaging information

*Type of package*

*Dimensions [WxDxH] In.* *Weight lb.*

### Available Colours

*STS/STN - Satin Stainless Steel*



06/17/2020