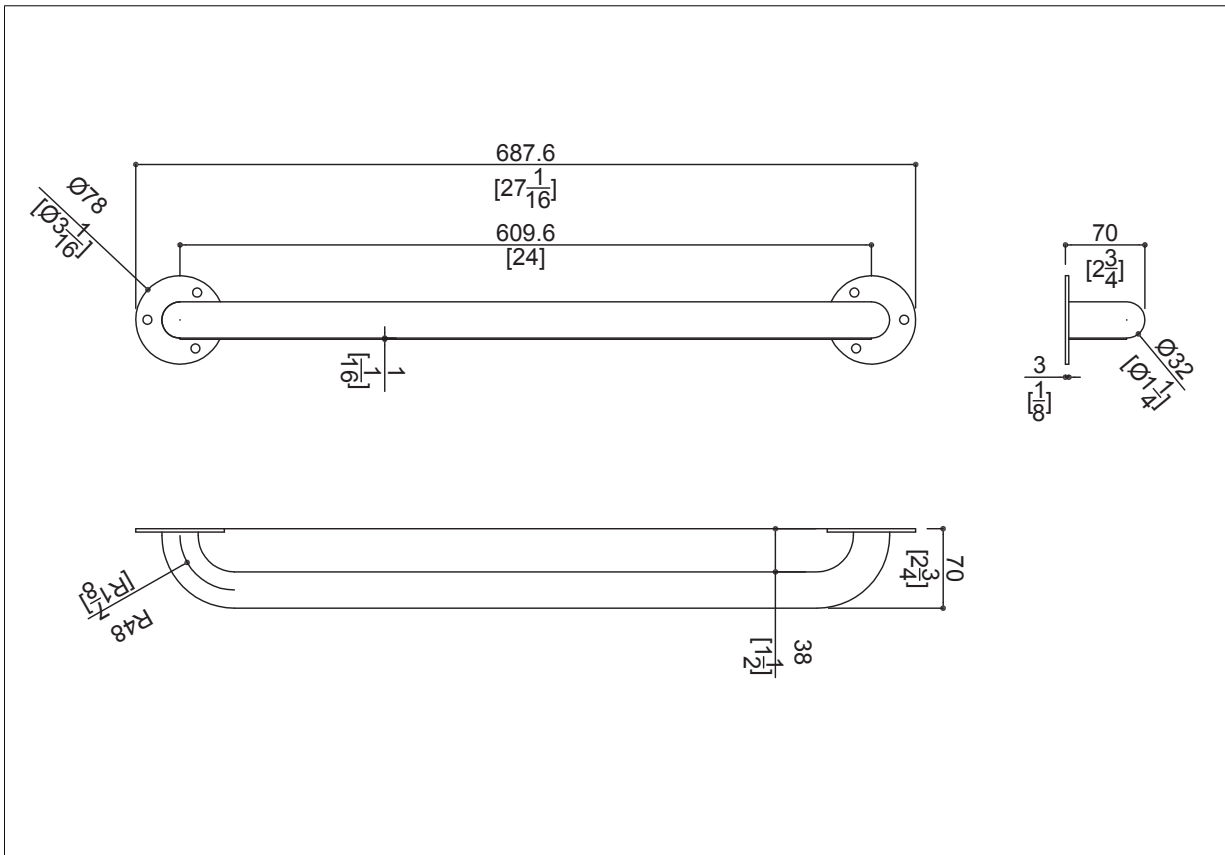
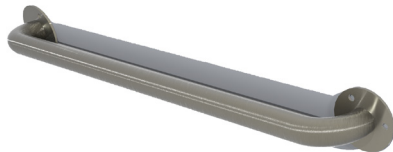


Stainless Steel Ligature Resistant Grab Bar - 24"

Technical Data



Straight grab bar made of seamless stainless steel AISI 304 pipe, with satin finish



Code **DSGBANTIL-24** *Series* **Stainless Steel Ligature Resistant Grab Bars**

Net weight lb. Dimensions [WxDxH] In. 27 1/16x2 3/4x 3 1/16

In use weight capacity *Vertical lb.* 330,69 330,69

Use and installation info

Use

Cleaning

Fasteners

Packaging information

Type of package

Dimensions [WxDxH] In. Weight lb.

Available Colours

STS/STN - Satin Stainless Steel

06/17/2020