

- NOTES:
1. APPLY CONTINUOUS SILICONE CAULK AT BLANKET END FLASHING (SUPPLIED BY JOINTMASTER).
 2. RATED SUBSTRATE MUST BE IN COMPLIANCE WITH UL ASSEMBLY REQUIREMENTS (BY OTHERS)
 3. STANDARD JOINT SIZE VARIES BY HOURLY RATING
 4. FLOOR SYSTEM CAN BE USED ON ROOFS

Part # Designation

Movement % <u>FL</u> - =50% <u>FL80</u> - =80%	HR Rating <u>1,2, or 3</u>	Flange <u>Top</u> <u>Inside</u> <u>Bottom</u>	Type <u>Mount-</u> <u>Waterguard-</u>	Standard Joint Sizes <u>4</u> thru <u>24</u>	Project Condition <u>FL</u> = Floor/Floor <u>FW</u> = Floor/Wall <u>WL</u> = Wall/Wall <u>WC</u> = Wall/Corner
Example FL-	2	T	W-	10	FL

FINISH:

PROJECT:

CUSTOMER:

LOCATION:

APPLICATION -
F520 WATER GUARD FIRE BLANKET
TOP MOUNT FLOOR/FLOOR & WALL/WALL

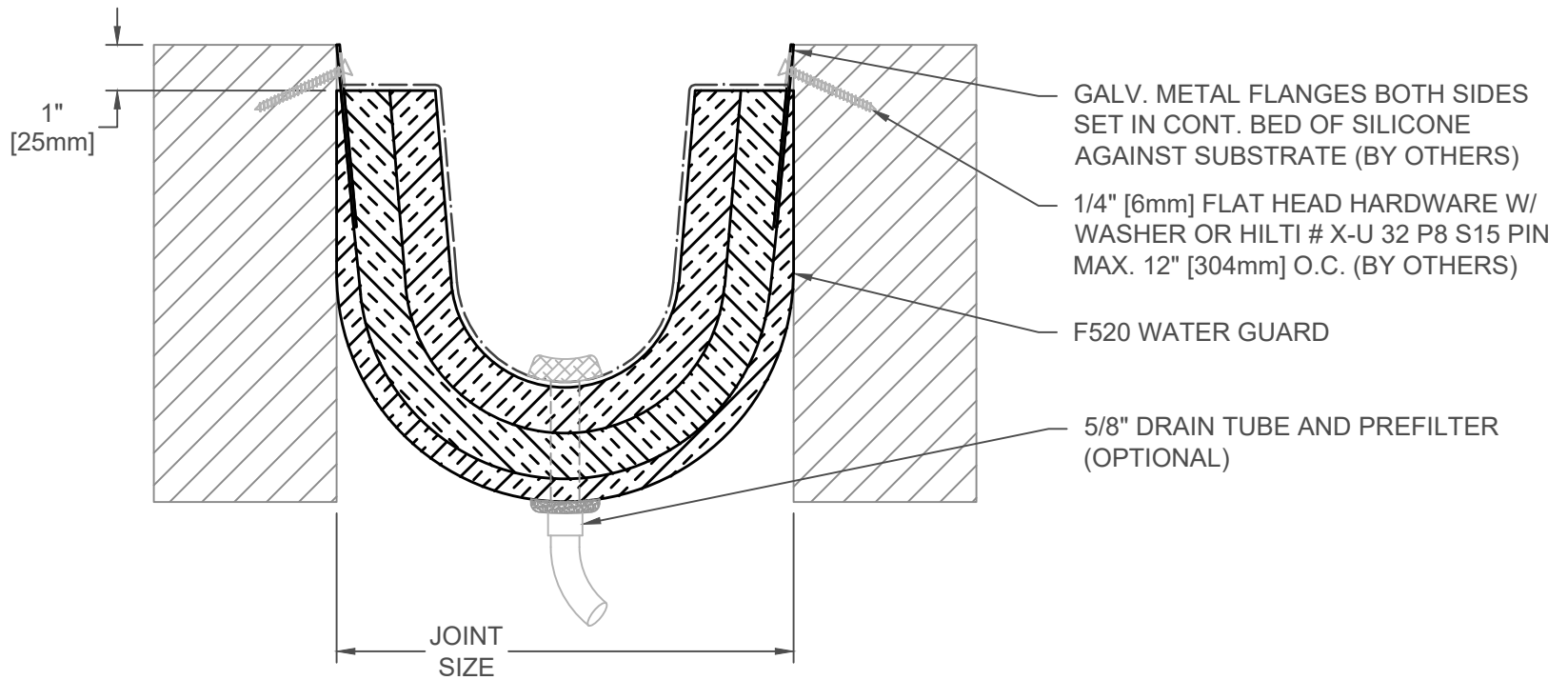
DATE: 2-10-16

SCALE: 1:4

DOC: CADJM.182/R5



For More Information Visit: Inprocorp.com



- NOTES:
1. APPLY CONTINUOUS SILICONE CAULK AT BLANKET END FLASHING (SUPPLIED BY JOINTMASTER).
 2. RATED SUBSTRATE MUST BE IN COMPLIANCE WITH UL ASSEMBLY REQUIREMENTS (BY OTHERS)
 3. STANDARD JOINT SIZE VARIES BY HOURLY RATING
 4. FLOOR SYSTEM CAN BE USED ON ROOFS

Part # Designation

Movement % <u>FL-</u> =50% <u>FL80-</u> =80%	HR Rating <u>1,2, or 3</u>	Flange <u>Top</u> <u>Inside</u> <u>Bottom</u>	Type <u>Mount-</u> <u>Waterguard-</u>	Standard Joint Sizes <u>4</u> thru <u>24</u>	Project Condition <u>FL</u> = Floor/Floor <u>FW</u> = Floor/Wall <u>WL</u> = Wall/Wall <u>WC</u> = Wall/Corner
Example FL-	2	I	W-	10	FL

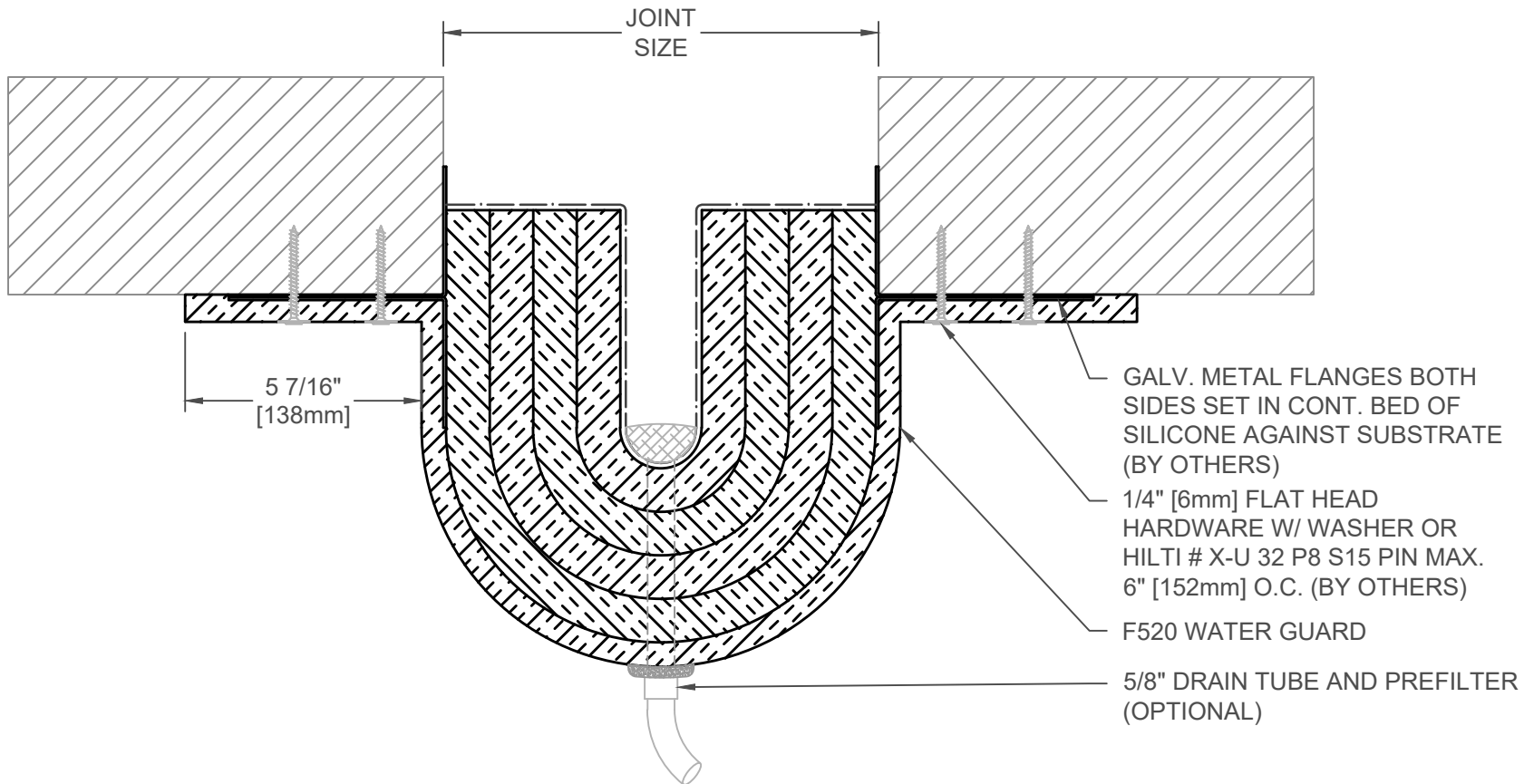
FINISH:
PROJECT:
CUSTOMER:
LOCATION:

APPLICATION -
F520 WATER GUARD FIRE BLANKET
INSIDE MOUNT FLOOR/FLOOR & WALL/WALL

DATE:	2-10-16
SCALE:	1:4
DOC:	CADJM.182/R5



For More Information Visit: Inprocorp.com



- NOTES:
1. APPLY CONTINUOUS SILICONE CAULK AT BLANKET END FLASHING (SUPPLIED BY JOINTMASTER).
 2. RATED SUBSTRATE MUST BE IN COMPLIANCE WITH UL ASSEMBLY REQUIREMENTS (BY OTHERS)
 3. STANDARD JOINT SIZE VARIES BY HOURLY RATING
 4. FLOOR SYSTEM CAN BE USED ON ROOFS

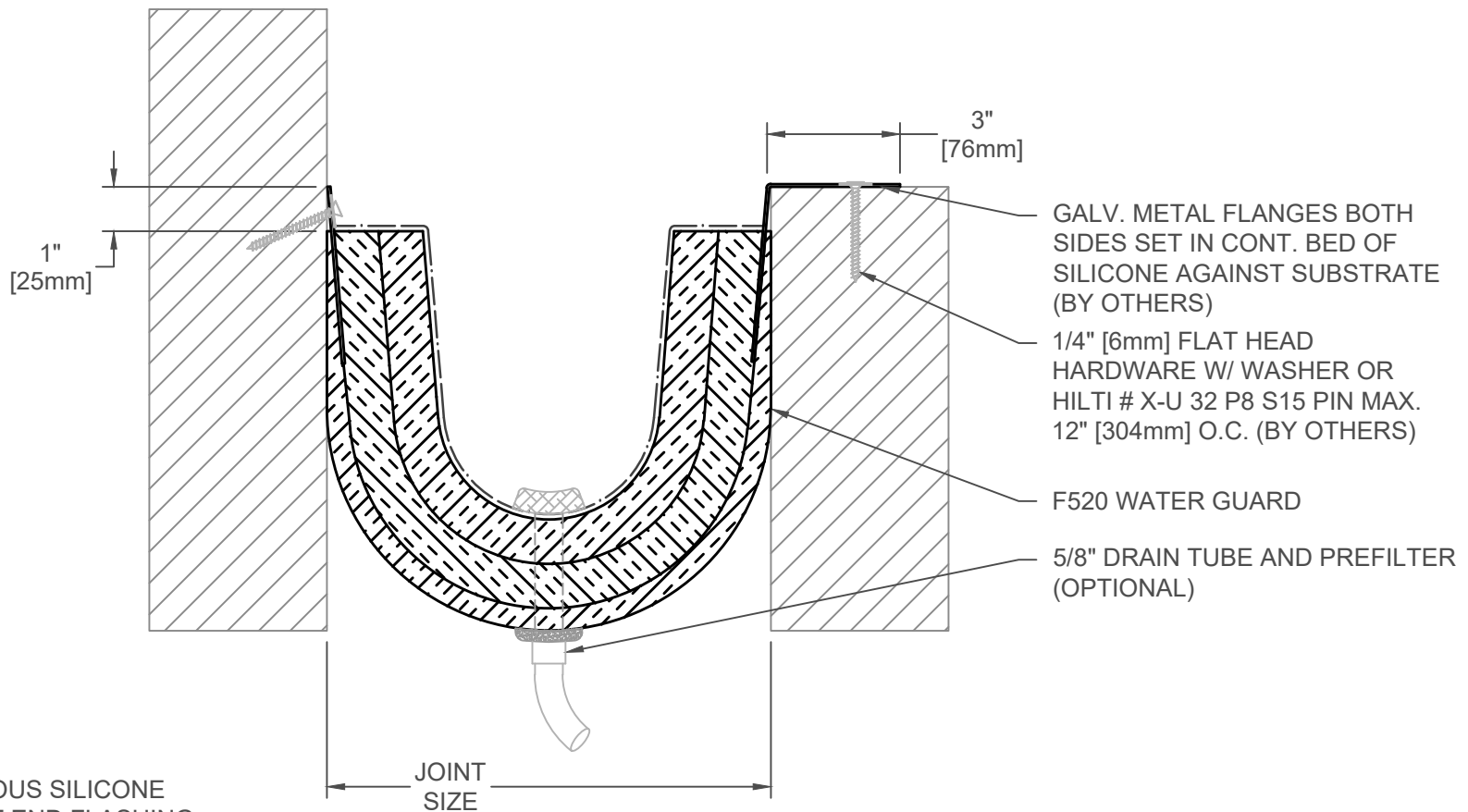
Part # Designation

Movement % <u>FL-</u> =50% <u>FL80-</u> =80%	HR Rating <u>1,2, or 3</u>	Flange <u>Top</u> <u>Inside</u> <u>Bottom</u>	Type <u>Mount-</u> <u>Waterguard-</u>	Standard Joint Sizes <u>6</u> thru <u>24</u>	Project Condition <u>FL</u> = Floor/Floor <u>FW</u> = Floor/Wall
Example FL-	2	B	W-	10	FL

FINISH:
PROJECT:
CUSTOMER:
LOCATION:

APPLICATION -
F520 WATER GUARD FIRE BLANKET
BOTTOM MOUNT FLOOR/FLOOR & CEILING/CEILING

DATE:	2-10-16
SCALE:	1:4
DOC:	CADJM.182/R5



- GALV. METAL FLANGES BOTH SIDES SET IN CONT. BED OF SILICONE AGAINST SUBSTRATE (BY OTHERS)
- 1/4" [6mm] FLAT HEAD HARDWARE W/ WASHER OR HILTI # X-U 32 P8 S15 PIN MAX. 12" [304mm] O.C. (BY OTHERS)
- F520 WATER GUARD
- 5/8" DRAIN TUBE AND PREFILTER (OPTIONAL)

- NOTES:
1. APPLY CONTINUOUS SILICONE CAULK AT BLANKET END FLASHING (SUPPLIED BY JOINTMASTER).
 2. RATED SUBSTRATE MUST BE IN COMPLIANCE WITH UL ASSEMBLY REQUIREMENTS (BY OTHERS)
 3. STANDARD JOINT SIZE VARIES BY HOURLY RATING
 4. FLOOR SYSTEM CAN BE USED ON ROOFS

Part # Designation

Movement % <u>FL-</u> =50% <u>FL80-</u> =80%	HR Rating <u>1,2, or 3</u>	Flange <u>Top</u> <u>Inside</u> <u>Bottom</u>	Type <u>Mount-</u> <u>Waterguard-</u>	Standard Joint Sizes <u>4 thru 24</u>	Project Condition <u>FL</u> = Floor/Floor <u>FW</u> = Floor/Wall <u>WL</u> = Wall/Wall <u>WC</u> = Wall/Corner
Example FL-	2	T	W-	10	FW

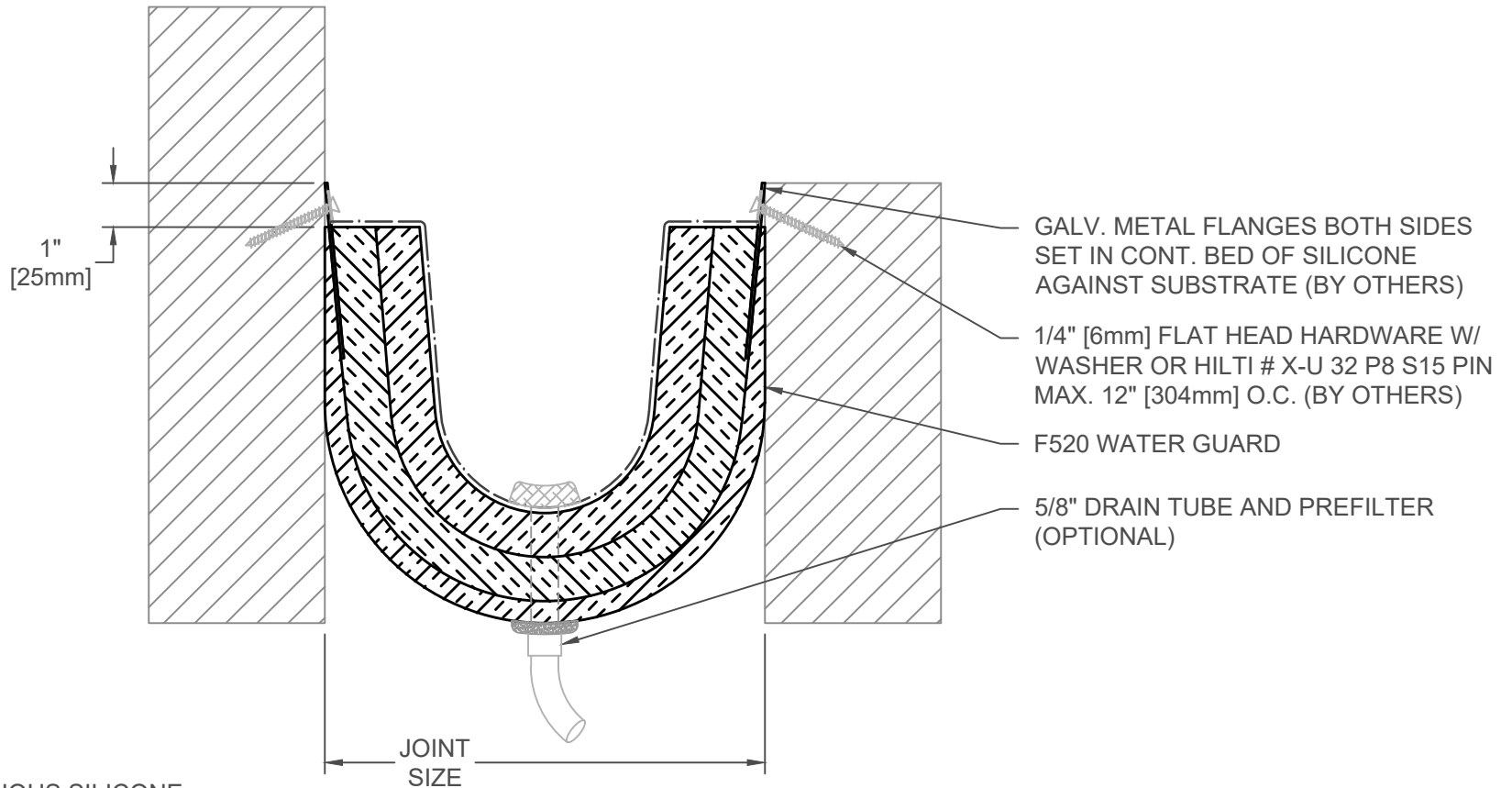
FINISH:
PROJECT:
CUSTOMER:
LOCATION:

APPLICATION -
F520 WATER GUARD FIRE BLANKET
TOP MOUNT FLOOR/WALL & WALL/CORNER

DATE:	2-10-16
SCALE:	1:4
DOC:	CADJM.182/R5



For More Information Visit: Inprocorp.com



- NOTES:
1. APPLY CONTINUOUS SILICONE CAULK AT BLANKET END FLASHING (SUPPLIED BY JOINTMASTER).
 2. RATED SUBSTRATE MUST BE IN COMPLIANCE WITH UL ASSEMBLY REQUIREMENTS (BY OTHERS)
 3. STANDARD JOINT SIZE VARIES BY HOURLY RATING
 4. FLOOR SYSTEM CAN BE USED ON ROOFS

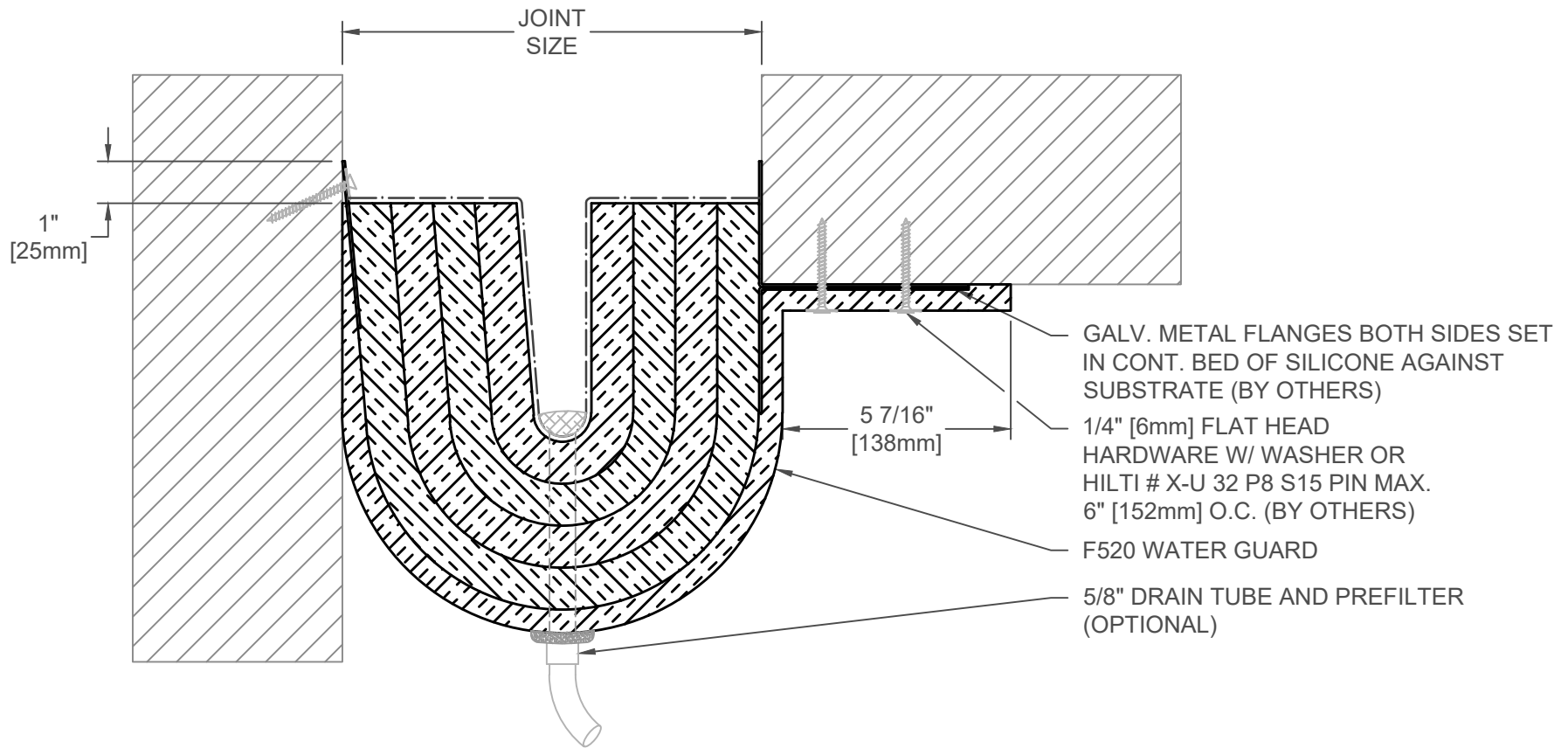
Part # Designation

Movement % <u>FL</u> - =50% <u>FL80</u> - =80%	HR Rating <u>1,2, or 3</u>	Flange <u>Top</u> <u>Inside</u> <u>Bottom</u>	Type <u>Mount</u> - <u>Waterguard</u> -	Standard Joint Sizes <u>4</u> thru <u>24</u>	Project Condition <u>FL</u> = Floor/Floor <u>FW</u> = Floor/Wall <u>WL</u> = Wall/Wall <u>WC</u> = Wall/Corner
Example FL-	2	I	W-	10	FW

FINISH:
PROJECT:
CUSTOMER:
LOCATION:

APPLICATION -
F520 WATER GUARD FIRE BLANKET
INSIDE MOUNT FLOOR/WALL & WALL/CORNER

DATE:	2-10-16
SCALE:	1:4
DOC:	CADJM.182/R5



- NOTES:
1. APPLY CONTINUOUS SILICONE CAULK AT BLANKET END FLASHING (SUPPLIED BY JOINTMASTER).
 2. RATED SUBSTRATE MUST BE IN COMPLIANCE WITH UL ASSEMBLY REQUIREMENTS (BY OTHERS)
 3. STANDARD JOINT SIZE VARIES BY HOURLY RATING
 4. FLOOR SYSTEM CAN BE USED ON ROOFS

Part # Designation

Movment % <u>FL-</u> =50% <u>FL80-</u> =80%	HR Rating <u>1,2, or 3</u>	Flange <u>Top</u> <u>Inside</u> <u>Bottom</u>	Type <u>Mount-</u> <u>Waterguard-</u>	Standard Joint Sizes <u>6</u> thru <u>24</u>	Project Condition <u>FL</u> = Floor/Floor <u>FW</u> = Floor/Wall
Example FL-	2	B	W-	10	FW

FINISH:
PROJECT:
CUSTOMER:
LOCATION:

APPLICATION -
F520 WATER GUARD FIRE BLANKET
BOTTOM MOUNT FLOOR/WALL & CEILING/WALL

DATE:	2-10-16
SCALE:	1:4
DOC:	CADJM.182/R5