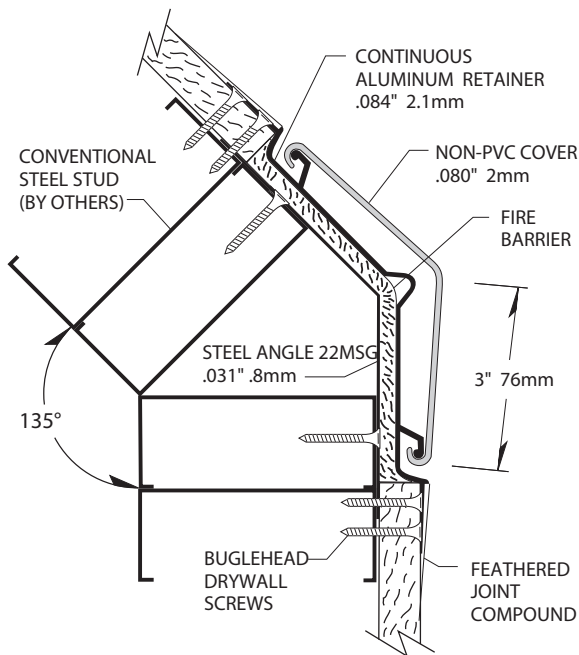
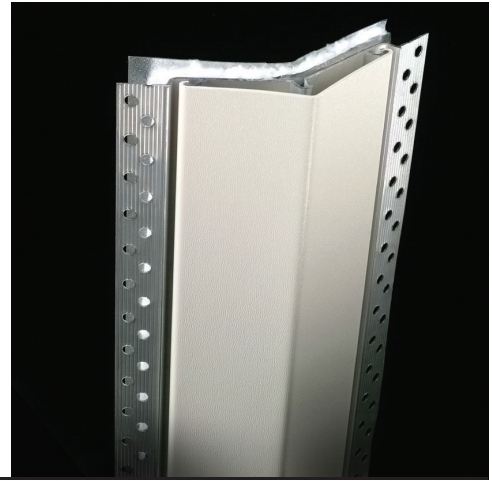


EnviroGT G2-130FR Fire Rated

Corner Guard



(1-Hour shown)

- Non-PVC cover is manufactured with G2 BioBlend™, Inpro's exclusive blend of PETG and biopolymer.
- Meet fire codes with the choice of one- and two- hour fire ratings
- Offers minimum design interruption by creating a smooth transition from wall to corner
- Easily wrap cove base around corners with optional cove base retainer
- Enhance interiors with standard colors
- Meet building requirements with UL Classification and conformance to NFPA Class A fire rating
- Meets the most rigorous standards and criteria of chemical emissions as prescribed by the GREENGUARD Environmental Institute
- Has been tested and meets GREENGUARD Environmental Institute's and the state of California's requirements for low emitting products as tested by Air Quality Sciences
- Has been tested and meets the GREENGUARD Children & School chemical emissions levels



IPC.1132/REV.3

EnviroGT G2-130FR Fire Rated Corner Guard

Suggested Specifications

PART 1 - GENERAL

1.01 SUMMARY

- A. Non PVC corner guard system for wall protection and decoration

1.02 SECTION INCLUDES

- A. G2-130FR Fire Rated Flush Mount Corner Guard Systems

1.03 REFERENCES

- A. American National Standards Institute (ANSI)
B. American Society for Testing and Materials (ASTM)
C. National Fire Protection Association (NFPA)
D. Society of Automotive Engineers (SAE)
E. Underwriters Laboratories (UL)
F. Underwriters Laboratory, Canada Accepted (cUL)

1.04 SYSTEM DESCRIPTION

- A. Performance Requirements: Provide corner guard systems that conform to the following requirements of regulatory agencies and the quality control of IPC Door and Wall Protection Systems, InPro Corporation.

1. Fire Performance Characteristics: Provide material conforming with the NFPA Class A fire rating. Surface burning characteristics, as determined by ASTM E-84, shall be flame spread of 25 or less and smoke development of 450 or less.
2. Impact Strength: Provide materials that have been tested in accordance with the applicable provisions of ASTM D-256, Impact Resistance of Plastics.
3. Fire Performance Characteristics: Provide UL Classified assemblies meeting the requirements of ANSI/UL 2079 "Test for Fire Resistance of Building Joint Systems" to maintain the rating of wall assemblies. Provide cUL (Canada accepted) corner guard assemblies meeting the requirements of CAN4-S115 to maintain the rating of wall assemblies.
4. Chemical and Stain Resistance: Provide material that shows resistance to stain when tested in accordance with applicable provisions of ASTM D-543.
5. Fungal and Bacterial Resistance: Provide material that does not support fungal or bacterial growth as tested in accordance with ASTM G-21 and ASTM G-22.
6. GREENGUARD® Certified: Provide GREENGUARD Certified material. Profiles shall meet the requirements of GREENGUARD Certification Standards for Low-Emitting Products and GREENGUARD Product Emission Standard for Children & Schools.
7. Color Consistency: Provide components matched in accordance with SAE J-1545 - (Delta E) with a color difference no greater than 1.0 units using CIE Lab, CIE CMC, CIE LCh, Hunter Lab or similar color space systems.

1.05 SUBMITTALS

- A. Product Data: Manufacturer's printed product data for each product indicated in this section.
B. Detail Drawings: Mounting details with the

- appropriate fasteners for specific project substrates.
C. Samples: Verification samples of corner guard, 8" (203mm) long, in full size profiles of each type and color indicated.
D. Manufacturer's Installation Instructions: Printed installation instructions for each corner guard.

1.06 DELIVERY, STORAGE AND HANDLING

- A. Deliver materials in unopened factory packaging to the jobsite
B. Inspect materials at delivery to assure that specified products have been received.
C. Store in original packaging in a climate controlled location away from direct sunlight.

1.07 PROJECT CONDITIONS

- A. Environmental Requirements: Install products in an interior climate controlled environment.

1.08 WARRANTY

- A. Standard IPC Limited Lifetime Warranty against material and manufacturing defects.

PART 2 - PRODUCTS

2.01 MANUFACTURER

- A. Acceptable Manufacturer: IPC Door and Wall Protection Systems™, InPro Corporation, PO Box 406, Muskego, WI 53150, USA; Telephone: 800.222.5556, Fax: 888.715.8407, www.inprocorp.com
B. Substitutions: Not permitted
C. Provide all corner guard and wall protection from a single manufacturer.

2.02 MANUFACTURED UNITS

- A. Corner Guard Profile
1. G2-130FR1 Flush Mount One Hour Fire Rated Corner Guard Profile
3" (76mm) x 3" (76mm) 135 degree
12' (3.66m) standard height
Custom heights and angles available
2. G2-160FR2 Flush Mount Two Hour Fire Rated Corner Guard Profile
3" (76mm) x 3" (76mm) 135 degree
12' (3.66m) standard height.
Custom heights and angles available

2.03 MATERIALS

- A. Reformulated PETG with Biopolymer Blend: Snap on cover of .080" (2mm) thickness shall be extruded from chemical and stain resistant PETG.
B. Aluminum: Continuous aluminum retainer of .070" (1.8mm) thickness shall be fabricated from 6063-T5 aluminum with a mill finish.

2.04 COMPONENTS

- A. Steel angle: Galvanized steel angle shall be 22 gauge, with 3-1/2" (89mm) wings.
B. Fire barrier: Foil covered fiber shall be 1/2" (13mm) thick and 6" (152mm) wide.
C. Cove base retainer: Optional cove base retainer shall be fabricated from 6063-T5 aluminum with a mill

finish.

- D. Fasteners: All mounting system accessories appropriate for substrates indicated on the drawings shall be provided.

2.05 FINISHES

- A. Corner Guard Covers: Corner guard colors to be selected by the architect from the IPC finish selection.

PART 3 - EXECUTION

3.01 EXAMINATION

- A. Examine areas and conditions in which the corner guard system will be installed.
1. Complete all finishing operations, including painting, before beginning installation of corner guard system materials.
2. Wall surface shall be dry and free from dirt, grease and loose paint.

3.02 PREPARATION

- A. General: Prior to installation, clean substrate to remove dust, debris and loose particles.

3.03 INSTALLATION

- A. General: Locate corner guard as indicated on approved detail drawings for the appropriate substrate and in compliance with the IPC installation instructions. Install corner guard level and plumb at the height indicated on the drawings.
B. Installation of G2-130FR Fire Rated Flush Mount Corner Guard:
1. See G2-130FR Fire Rated Flush Mount Corner Guard installation instructions.

3.04 CLEANING

- A. At completion of the installation, clean surfaces in accordance with the IPC clean-up and maintenance instructions.