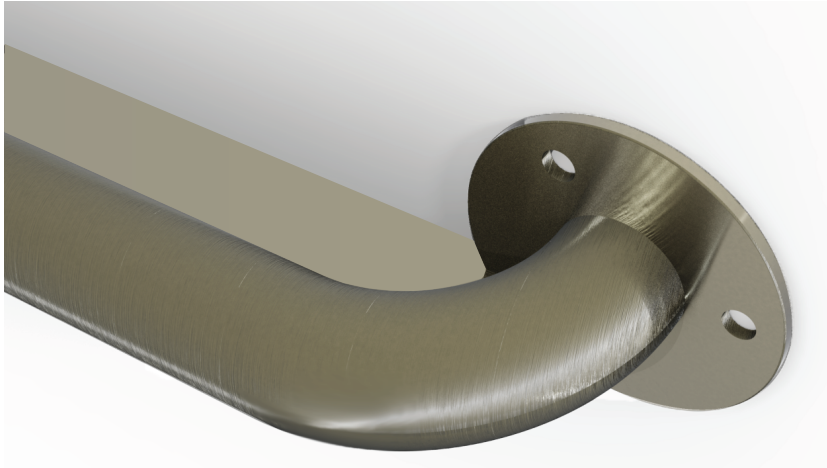
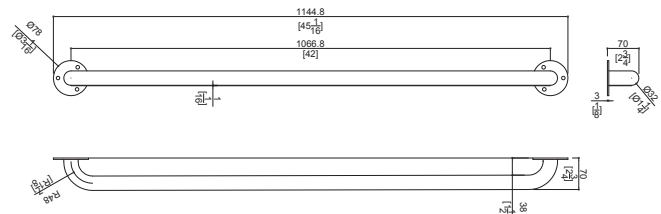
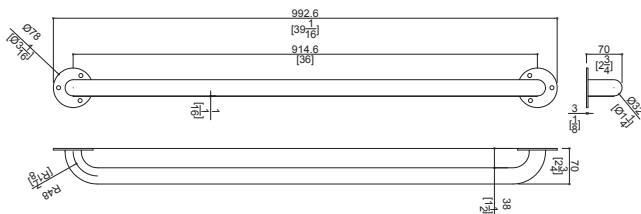
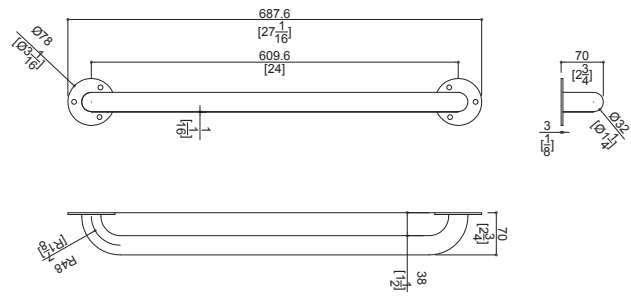
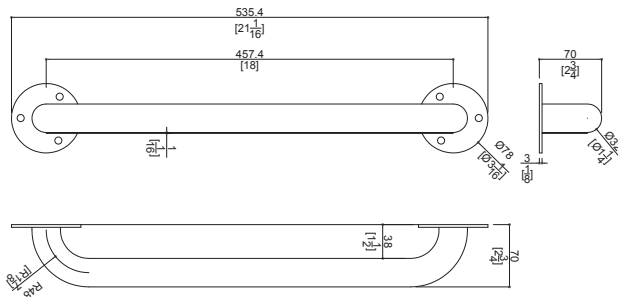


Stainless Steel Ligature Resistant Grab Bars



- Ligature Resistant Design
- 330 lb Load Rating
- One Piece Design
- 3 Mounting Holes Per Flange



IPC.2024/Rev.1

Stainless Steel Ligature Resistant Grab Bars

Suggested Specifications

PART 1 GENERAL

1.01 SUMMARY

A. Grab bars for safety.

1.02 SECTION INCLUDES

A. Section 10 28 00 – Stainless Steel Ligature Resistant Grab Bars

1.03 REFERENCES

A. American National Standards Institute (ANSI)

B. American Society for Testing and Materials (ASTM)

1.04 SYSTEM DESCRIPTION

A. Performance Requirements: Provide stainless steel grab bar systems that conform to the following requirements of regulatory agencies and the quality control of InPro® Corporation.

1. Code Compliance: Provide grab bars that comply with all current ANSI requirements.

1.05 SUBMITTALS

A. Product Data: Manufacturer's standard product data for each product specified, including detail dimensions, function, and finish.

B. Samples: Manufacturer's color selection and verification samples – 18" in length by request.

C. Manufacturer's printed installation instruction: Include anchoring and fastening details.

1.06 DELIVERY, STORAGE AND HANDLING

A. Deliver materials in unopened factory packaging to the jobsite

B. Inspect materials at delivery to assure that specified products have been received.

C. Store in original packaging in a climate controlled location away from direct sunlight.

1.07 PROJECT CONDITIONS

A. Environmental Requirements: Products must be installed in an interior climate controlled environment.

1.08 WARRANTY

A. Limited Lifetime Warranty against material and manufacturing defects.

PART 2 PRODUCTS

2.01 MANUFACTURER

A. Acceptable Distributor/Manufacturer:

Inpro® Corporation,
PO Box 406, Muskego, WI 53150, USA;
Telephone: 800-222-5556, Fax: 888-715-8407,
www.inprocorp.com

B. Substitutions: Not permitted.

C. Provide all grab bars and bathroom accessories from a single manufacturer.

2.02 MANUFACTURED UNITS

A. Stainless Steel Ligature Resistant Grab Bars.

1. Rated to withstand 330lbs of loading.

2. Corrosion resistant stainless steel, round 1 1/4" (32mm) diameter with 1 1/2" clear space to wall, 16 gauge stainless steel plate welded to the bottom of the bar to fill the gap between the bar and wall. Welded stainless steel flange.

4. Straight bars, Model Number, Length.

a. DSGBANTIL-18, 18" long.

b. DSGBANTIL-24, 24" long.

c. DSGBANTIL-36, 36" long.

d. DSGBANTIL-42, 42" long.

PART 3 EXECUTION

3.01 EXAMINATION

A. Do not begin installation until substrates finishing operations are completed, including painting.

B. Verify that prepared openings are sized and located in accordance with architects recommendations. Verify that blocking, reinforcement and anchoring devices are the correct type.