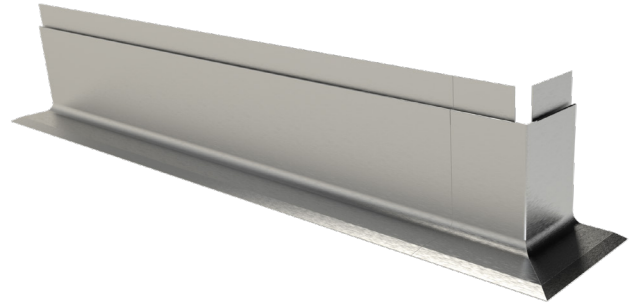
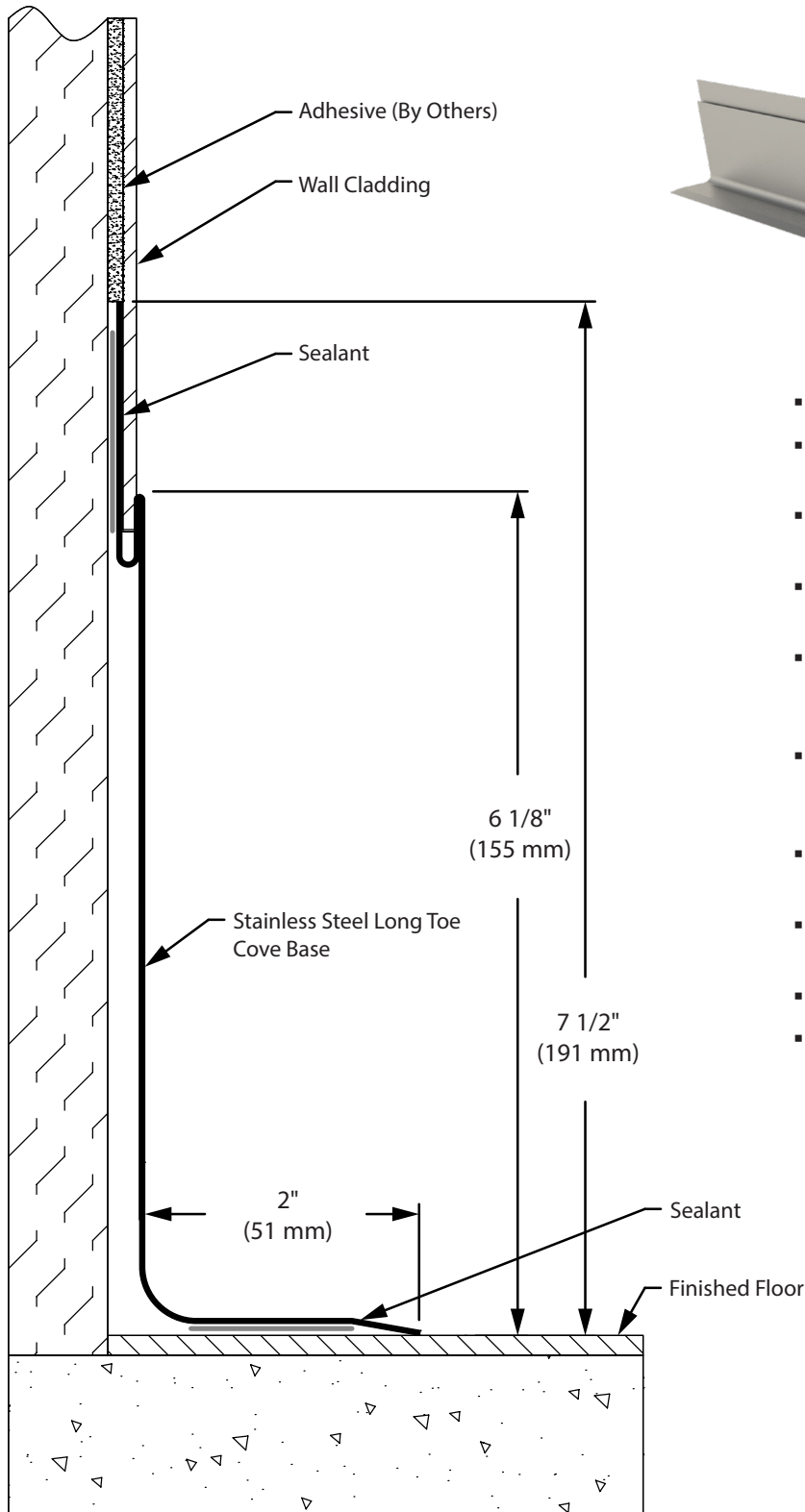


# Stainless Steel Long Toe Cove Base

## Suggested Specification



- 20 Gauge, type 304 stainless steel
- Pre-formed 90° and 135° inside or outside corners available
- Offered in stock lengths and manufactured pieces per field conditions
- Offers superior clean-ability, moisture protection, and durability
- Promotes hygienic environments for surgical centers, industrial kitchens, food processing facilities and commercial spaces
- Top channel receives adjacent wall finishes, reducing need for precise cuts; saving installation, remodel and repair costs
- Eliminates water migration without the use of membranes, coatings or primers
- Sold as a complete system; adhesive, microsealant and silver silicone included
- Reduces life cycle maintenance costs
- Recyclable / green product

IPC.3227/REV.3

# Stainless Steel Long Toe Cove Base

## Suggested Specification

### PART 1 GENERAL

#### 1.01 RELATED DOCUMENTS

A. Drawings and general provisions of the Contract, including General Conditions and Division 1 Specification Sections apply to this Section.

#### 1.02 SUMMARY

A. This Section includes stainless steel wall base and installation accessories of the following type:

1. Stainless steel cove base.

#### 1.03 SUBMITTALS

A. Product Data: Submit manufacturer's product data for each type of stainless cove base specified, including the following:

1. Installation accessories.

2. Installation instructions.

B. Samples: Submit samples to the Architect for review prior to delivering materials to the site or commencing the work in this Section.

1. Stainless steel cove base: Submit full size samples, minimum 4 inches in length, of each type of stainless steel cove base required with specified finish.

C. LEED Submittals:

1. Credit MR 4.1 and Credit MR 4.2 – Recycled Content: Product data and certification letter indicating percentages by weight of post-consumer and preconsumer recycled content for products having recycled content. Include statement indicating costs for each product having recycled content.

2. Credit EQ 4.1 – Adhesive and Sealants: Submit documentation including statement of VOC content.

#### 1.04 QUALITY ASSURANCE

A. Installer Qualifications: Installation of work of this section shall be by a subcontractor approved by the manufacturer with a minimum of 5 years' experience in similar work or other decorative metal installations having successful in-service performance.

#### 1.05 DELIVERY, STORAGE AND HANDLING

A. Packing and Shipping: Deliver materials to site in manufacturer's original unopened packaging with labels intact. Protect finished surfaces with removable wrapping or protective plastic film which will not bond when exposed to sunlight.

B. Storage: Store wall Stainless Steel Cove Base in manufacturer's original packaging, off ground and under cover away from direct sunlight, protected from weather, extreme temperature, moisture or other damage.

C. Handling: Handle materials so that surfaces are protected. Prevent distortion or damage to fabricated pieces.

#### 1.06 PROJECT/SITE CONDITIONS

A. Environmental Requirements: Areas to receive Stainless Steel Cove Base shall be enclosed with HVAC in operation and maintaining temperatures within range expected during building occupancy to avoid thermal dimensional change in lengths of material after installation.

#### 1.07 SCHEDULING AND SEQUENCING

A. Coordination: Coordinate installation of stainless steel cove base with associated flooring and wall finishes and other adjacent floor and wall finishes.

#### 1.08 MAINTENANCE

A. Extra Materials: Furnish 8 lineal feet of each type of stainless cove base specified and 2 preformed corner units of each type specified for owners maintenance use.

### PART 2 PRODUCTS

#### 2.01 MANUFACTURERS

A. Approved Distributor/Manufacturer:

Inpro Corporation  
S80 W18766Apollo Drive  
Muskego, WI 53150  
(800) 222-5556.  
www.inprocorp.com

#### 2.02 MATERIALS

A. Stainless Steel Sheet: ASTM A240, Type 304.

1. Gauge: 20 gauge.

2. Finish: No. 4 Brushed in accordance with ASTM A480.

B. Recycled Content: Stainless steel shall have a postconsumer recycled content plus one half of pre-consumer recycled content of not less than 25 percent.

#### 2.03 MANUFACTURED WALL BASE

A. Type 304 Stainless steel cove base:

1. 7.5 inch Stainless steel cove base Long Toe Cove: STB-6SL-3396

#### 2.04 INSTALLATION ACCESSORIES

A. LEED Requirements: Adhesive shall have a VOC content of 50g/L or less when calculated according to 40CFR 59, Subpart D (EPA Method 24).

B. Adhesive: Bostik BOSPRO MS Series A78000 white sealant provided in 10.1oz cartridges.

C. Microsealant: EternaBond DoubleStick CR-DS microsealant, provided in 1"x50' rolls, 60mils thick

#### 2.05 FABRICATION

A. Stainless steel cove base shall be factory formed from stainless steel sheet with directional polish grain oriented parallel with length.

1. Edges shall be free of burrs.

2. Standard Length: 8'-0"

3. Fabricate exposed ends with filler to match profile of Stainless steel cove base.

4. Preformed corners shall be 90 degree, or as required to suit corner degree indicated on drawings. Fabricate preformed corners with minimum 4 inch legs.

### PART 3 EXECUTION

#### 3.01 EXAMINATION

A. Verification of Conditions: Examine subsurfaces to receive work and report detrimental conditions in writing to architect. Commencement of work will be construed as acceptance of subsurfaces.

1. Painted walls shall be dry and thoroughly cured prior to application of stainless steel cove base.

2. Perform adhesion test on painted drywall or plaster walls to receive stainless steel cove base in accordance with manufacturer's installation instructions to verify proper adhesion.

3. Verify floors within areas where stainless steel cove base is to be installed are level to within 1/8 inch in 10'-0".

B. Coordination: Coordinate with other work which

affects, connects with, or will be concealed by this work.

1. Coordinate installation of Stainless steel cove base with application of wall finishes.

2. Where stainless steel cove base is installed after application of wall finish, verify application is completed and ready for installation of base.

3. Install cove base prior to application of finishes such as wall tile, stainless steel wall sheeting, FRP, etc.

#### 3.02 PREPARATION

A. Surface Preparation: Surfaces to receive stainless steel cove base shall be cleaned to remove all dust, debris, and other contaminants that would interfere with adhesive bond.

B. Place stainless steel cove base in locations/rooms where units be installed and acclimate to building conditions as specified herein in Project/Site Conditions article for a minimum period of 24 hours prior to installation.

#### 3.03 INSTALLATION

A. Adhesive Installation: Install stainless steel cove base with adhesive in strict accordance with manufacturer's printed installation instructions.

B. Install cove base accurately placed in proper location, level, and in proper alignment with adjoining work and applied finishes.

1. Fit field connections accurately together to form hairline joints.

2. Silver silicone to be applied to the face of each hairline joint

C. Where necessary to provide secure attachment at corners, end terminations, or where higher abuse is anticipated, supplement adhesive installation with two (2) countersunk #10 stainless steel screws (installer supplied) located within 1 inch of each exposed end or corner. Set screw heads flush in countersunk hole.

#### 3.04 DAMAGE AND REPAIR

A. Upon completion of the installation, visually check exposed surfaces of the work of this section, and touch up scratches and damaged surfaces by field polishing so they are completely invisible to the unaided eye from a distance of five feet.

#### 3.05 CLEANING

A. Upon completion of installation of stainless steel cove base, promptly clean exposed surfaces in accordance with recommendations of the stainless steel cove base manufacturer to remove all traces of dust, dirt, adhesive, and other foreign materials.

B. During the course of the work and on completion, remove and dispose of excess materials, equipment and debris away from premises. Leave work in clean condition.

END OF SECTION