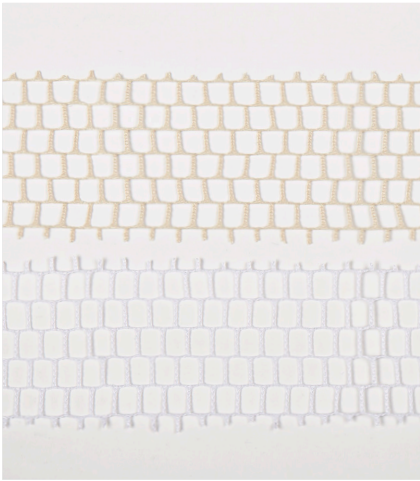


# Curtain Options + Accessories



## **EZE-Mesh™**

100% Nylon Mesh available in Tusk and Snow. Optional Antimicrobial Mesh available.



## **Standard Construction**

Mesh exposed on reverse side of curtain.



## **Hidden Mesh**

Concealed on reverse side of cubicle curtain. Available upon request.



## **Adjustable Drop chain**

Use Adjustable Drop-Chain to accommodate various height conditions and for air/steam circulation. Use to raise and lower curtain height. CE9039 - White or Nickel Plated  
Lengths: 6", 12", 18", 24"  
Custom lengths available.



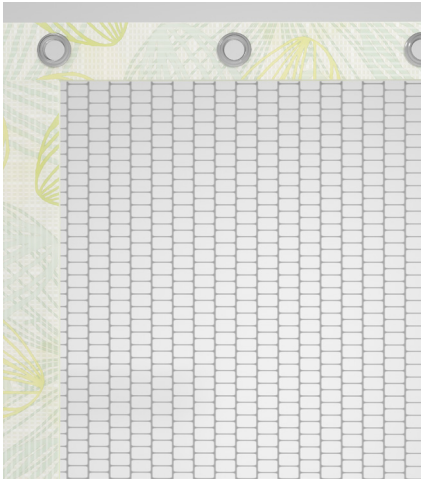
## **Snap Tape**

Snap tape is on top, sides (or both) of curtain, hidden between mesh and fabric, for easy change-outs. Available upon request.



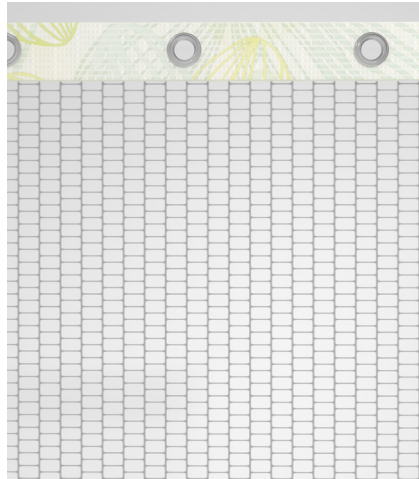
## **EZE-Swap® Snap Panels**

Snap panel system allows for quicker change out time. Standard panel sizes are 66" W by 66" H.



#### Framing

Fabric border is sewn around top and sides of curtain. Available upon request.



#### Banding

Fabric border is sewn on top of curtain. Available upon request.



#### Clip-on Wands

Pulls curtain along track instead of by the curtain, reducing wear.

CE100698 - 48" (1.22m) length

CE100697 - 36" (910mm) length

CE100699 - 30" (760mm) length

CE9224 - 24" Adjustable Chain Wand (610mm) length



#### Beaded Chain

Use as curtain tie-back.

Length: 48" (1.22m)

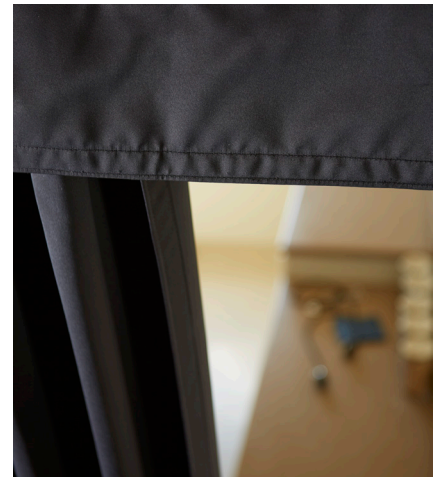
Plastic: CE9251

Nickel Plated: CE9252



#### Tie Backs

Fabric tie backs available with Velcro or Grommets. Beaded tie backs available



#### Blackout Valance

For additional light blocking and privacy, add a valance for the space between the curtain and ceiling.